

NOTICE OF INTENT

Section 7 of the *LANDS ACT*

NOTICE IS HEREBY given that an application has been made to the Department of Municipal Affairs, Lands Branch, to acquire title, pursuant to section 7(2) D of the said Act.

To that piece of Crown lands situated within 15 metres of the waters of: Broad Lake, Bellevue  
for the purpose of: Boathouse/wharf

Application Number: 155120

Region: Eastern

Date of Posting: February 25, 2019

The land is described as follows:

Approximate Dimensions of the land to the extent of the intrusion on the 15 metre reservation:

Frontage (metres): 10

Depth (metres): 15

and, containing an area in square meters of approximately: 150

**Please see map included for the general location of the lands subject to the application.**

Any person wishing to object to the application must file the objection in writing with reasons, within 30 days from the posting of this Notice of Intent, to the Minister of Municipal Affairs by mail or email to the nearest Regional Lands Office:

- Eastern Regional Lands Office, P.O. Box 8700, Howley Building, St. John's, NL, A1B 4J6  
Email: [EasternLandsOffice@gov.nl.ca](mailto:EasternLandsOffice@gov.nl.ca)
- Central Regional Lands Office, P.O. Box 2222, Gander, NL, A1V 2N9  
Email: [CentralLandsOffice@gov.nl.ca](mailto:CentralLandsOffice@gov.nl.ca)
- Western Regional Lands Office, P.O. Box 2006, Sir Richard Squires Building, Corner Brook, NL, A2H 6J8  
Email: [WesternRegionLands@gov.nl.ca](mailto:WesternRegionLands@gov.nl.ca)
- Labrador Regional Lands Office, P.O. Box 3014, Station "B", Happy Valley-Goose Bay, NL, A0P 1E0  
Email: [LabradorLandsOffice@gov.nl.ca](mailto:LabradorLandsOffice@gov.nl.ca)

# Government of Newfoundland & Labrador Department of Fisheries & Land Resources



## NOTE TO USERS

The information on this map was compiled from land surveys registered in the Crown Lands Registry.

Since the Registry does not contain information on all land ownership within the Province, the information depicted cannot be considered complete.

The boundary lines shown are intended to be used as an index to land titles issued by the Crown. The accuracy of the plot is not sufficient for measurement purposes and does not guarantee title.

Users finding any errors or omissions on this map sheet are asked to contact the Crown Lands Inquiries Line by telephone at 1-833-891-3249 or by email at [CrownLandsInfo@gov.nl.ca](mailto:CrownLandsInfo@gov.nl.ca).

Some titles may not be plotted due to Crown Lands volumes missing from the Crown Lands registry or not plotted due to insufficient survey information.

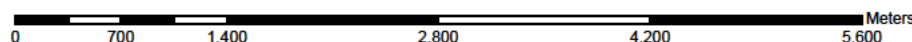
The User hereby indemnifies and saves harmless the Minister, his officers, employees and agents from and against all claims, demands, liabilities, actions or cause of actions alleging any loss, injury, damages and matter (including claims or demands for any violation of copyright or intellectual property) arising out of any missing or incomplete Crown Land titles, and the Minister, his or her officers, employees and agents shall not be liable for any loss of profits or contracts or any other loss of any kind as a result.

For inquiries please contact the Crown Lands Inquiries Line by telephone at 1-833-891-3249 or by email at [CrownLandsInfo@gov.nl.ca](mailto:CrownLandsInfo@gov.nl.ca). Or visit the nearest Regional Lands Office; [http://www.flr.gov.nl.ca/departement/contact\\_land.html](http://www.flr.gov.nl.ca/departement/contact_land.html)

## Crown Lands Administration Division

Scale 1:50,000

Compiled on February 25, 2019





# Government of Newfoundland & Labrador Department of Fisheries & Land Resources



## NOTE TO USERS

The information on this map was compiled from land surveys registered in the Crown Lands Registry.

Since the Registry does not contain information on all land ownership within the Province, the information depicted cannot be considered complete.

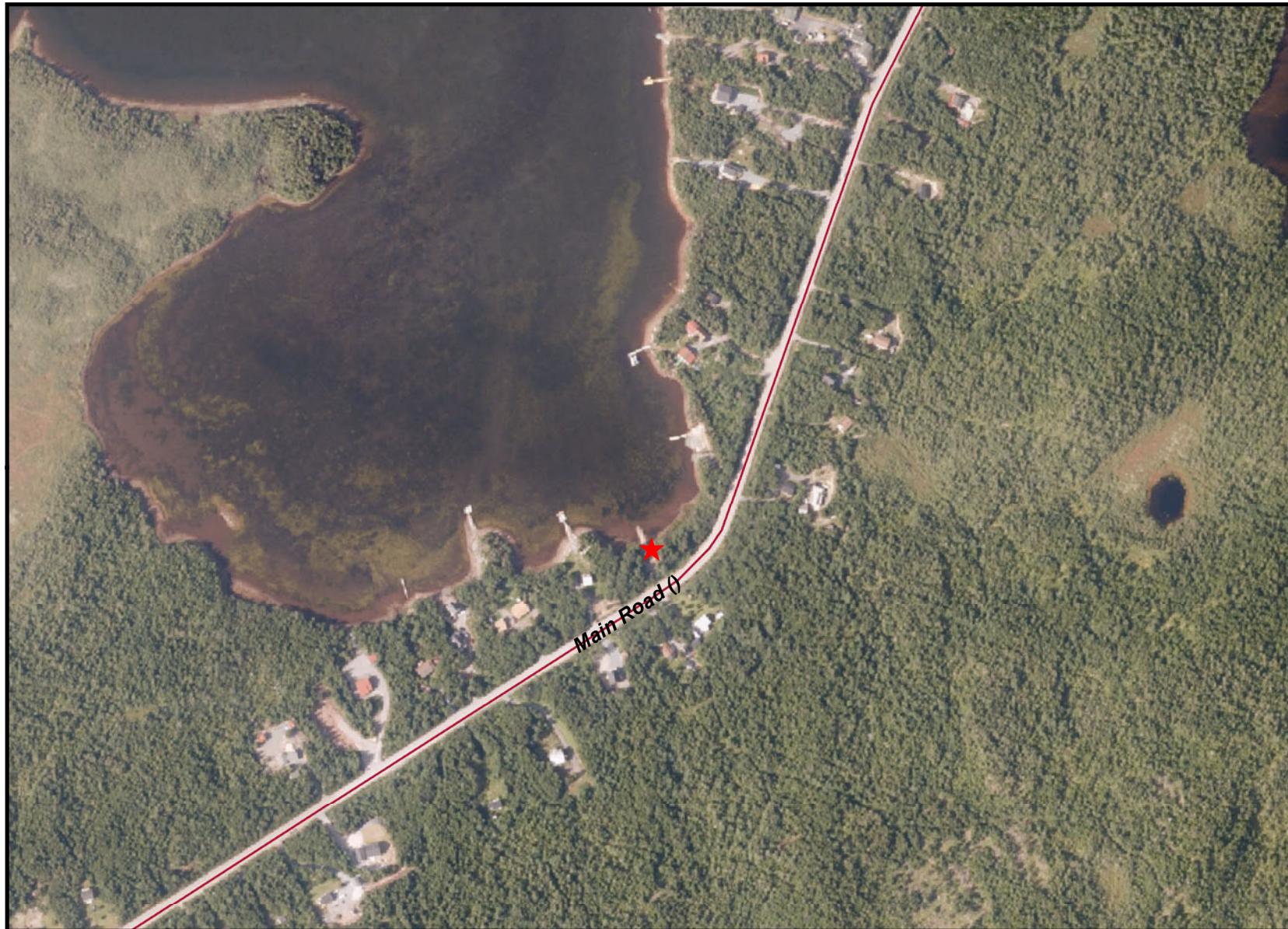
The boundary lines shown are intended to be used as an index to land titles issued by the Crown. The accuracy of the plot is not sufficient for measurement purposes and does not guarantee title.

Users finding any errors or omissions on this map sheet are asked to contact the Crown Lands Inquiries Line by telephone at 1-833-891-3249 or by email at [CrownLandsInfo@gov.nl.ca](mailto:CrownLandsInfo@gov.nl.ca).

Some titles may not be plotted due to Crown Lands volumes missing from the Crown Lands registry or not plotted due to insufficient survey information.

The User hereby indemnifies and saves harmless the Minister, his officers, employees and agents from and against all claims, demands, liabilities, actions or cause of actions alleging any loss, injury, damages and matter (including claims or demands for any violation of copyright or intellectual property) arising out of any missing or incomplete Crown Land titles, and the Minister, his or her officers, employees and agents shall not be liable for any loss of profits or contracts or any other loss of any kind as a result.

For inquiries please contact the Crown Lands Inquiries Line by telephone at 1-833-891-3249 or by email at [CrownLandsInfo@gov.nl.ca](mailto:CrownLandsInfo@gov.nl.ca). Or visit the nearest Regional Lands Office; [http://www.flr.gov.nl.ca/departement/contact\\_land.html](http://www.flr.gov.nl.ca/departement/contact_land.html)



Scale 1:5,000

Compiled on February 25, 2019

## Crown Lands Administration Division

