

**Public Draw for Crown Land
Recreational Cottage Lots
Salmonier Cottage Area**

2018

**Legal Land Survey Plot Plans
Lots 11-131**

SCHEDULE "A"
LOT 11

All that piece or parcel of land situate and being on the south side of Main Cottage Access Road (20 metres wide), in the electoral district of Placentia & St. Mary's, in the Province of Newfoundland & Labrador, Canada, and being bounded and abutted as follows, that is to say:

Beginning at a point in the said southern limit of Main Cottage Access Road (20 metres wide), said point having co-ordinates of N 5 236 423.530 metres and E 282 121.405 metres of the Modified Three Degree Transverse Mercator Projection (NAD83) for the Province of Newfoundland & Labrador, Canada,

Thence running along the said southern limit of Main Cottage Access Road (20 metres wide), along the arc of a curve of radius one hundred seven decimal zero zero zero metres, a distance of sixty-six decimal zero four nine metres (chord bearing and distance south eighty degrees zero two minutes fifty-six seconds east sixty-five decimal zero zero five metres),

Thence running by Crown Land south zero seven degrees forty-seven minutes fifty seconds east sixty-one decimal zero two four metres,

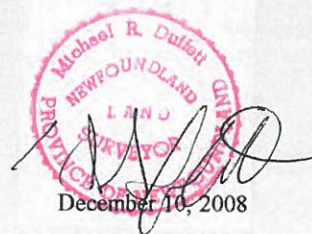
And thence north eighty-eight degrees fifty-four minutes forty-four seconds west fifty-seven decimal two five two metres,

And thence north seventy-six degrees seventeen minutes zero one seconds west forty-seven decimal five two eight metres,

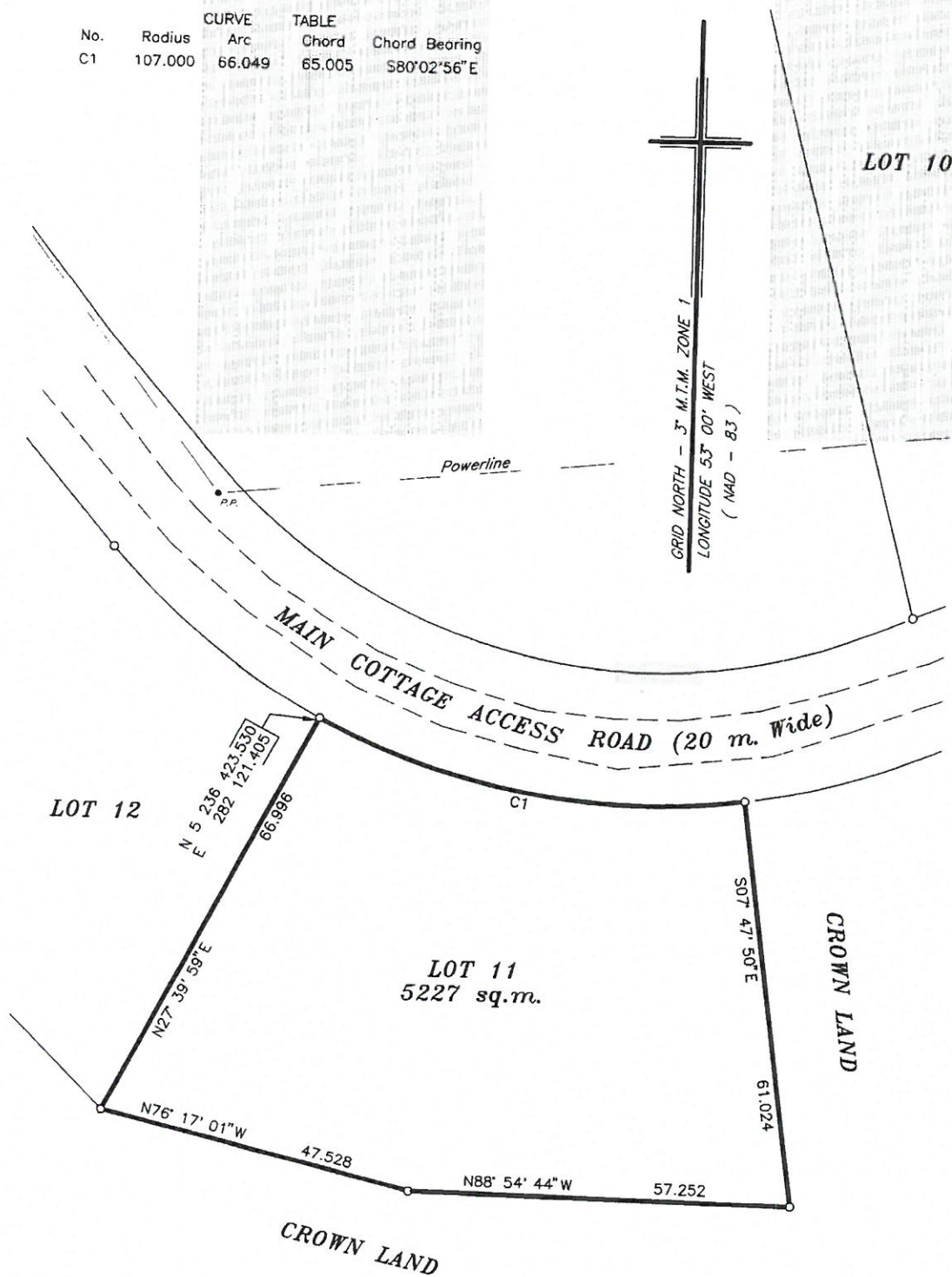
Thence running by Lot 12 north twenty-seven degrees thirty-nine minutes fifty-nine seconds east sixty-six decimal nine nine six metres, more or less, to the point of beginning.

Containing, in all, an area of five thousand two hundred twenty-seven (5227) Square Metres, more or less;

All bearings being referred to the meridian of fifty-three degrees west longitude of the Three Degree Transverse Mercator Projection (NAD 83).


December 10, 2008

No.	Radius	CURVE	TABLE	
		Arc	Chord	Chord Bearing
C1	107.000	66.049	65.005	S80°02'56"E



Lot 11

Salmonier Cottage

Initiative - Phase 1

○ - Capped Iron Bar

All Lines Cut or Open

Linear Measurement Horizontal Ground Distances

Coordinates by GPS from Reference Monument

83G3454 - N 5 236 903.435, E 283 809.131

Scale Factor at Starting Point - 0.999881

SCALE = 1 : 750



M. R. Duffett & Associates Ltd.
December 10, 2008

SCHEDULE "A"
LOT 12

All that piece or parcel of land situate and being on the south side of Main Cottage Access Road (20 metres wide), in the electoral district of Placentia & St. Mary's, in the Province of Newfoundland & Labrador, Canada, and being bounded and abutted as follows, that is to say:

Beginning at a point in the said southern limit of Main Cottage Access Road (20 metres wide), said point having co-ordinates of N 5 236 467.280 metres and E 282 073.725 metres of the Modified Three Degree Transverse Mercator Projection (NAD83) for the Province of Newfoundland & Labrador, Canada,

Thence running along the said southern limit of Main Cottage Access Road (20 metres wide), south forty degrees fifty-one minutes zero six seconds east twenty-four decimal nine eight three metres,

And thence along the arc of a curve of radius one hundred seven decimal zero zero zero metres, a distance of forty decimal two four two metres (chord bearing and distance south fifty-one degrees thirty-five minutes zero two seconds east forty decimal zero zero five metres),

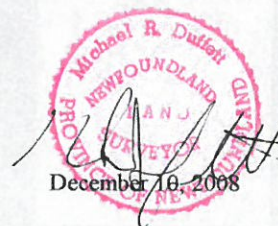
Thence running by Lot 11 south twenty-seven degrees thirty-nine minutes fifty-nine seconds west sixty-six decimal nine nine six metres,

Thence running by Crown Land north forty-five degrees ten minutes zero two seconds west eighty-seven decimal four eight five metres,

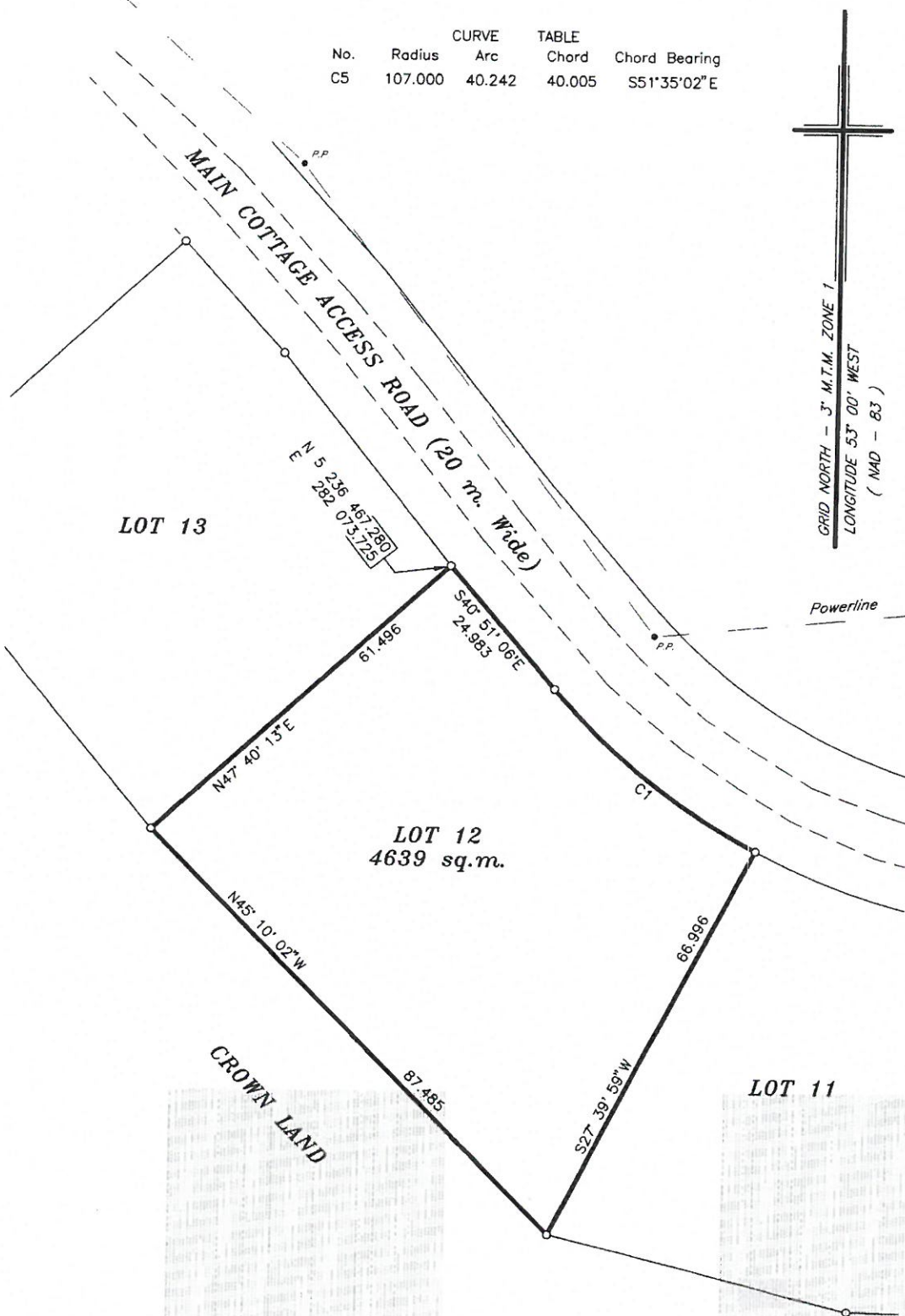
Thence running by Lot 13 north forty-seven degrees forty minutes thirteen seconds east sixty-one decimal four nine six metres, more or less, to the point of beginning.

Containing, in all, an area of four thousand six hundred thirty-nine (4639) Square Metres, more or less;

All bearings being referred to the meridian of fifty-three degrees west longitude of the Three Degree Transverse Mercator Projection (NAD 83).


December 10, 2008

No.	Radius	CURVE		TABLE	
		Arc	Chord	Chord	Bearing
C5	107.000	40.242	40.005	S51°35'02"E	



Lot 12

Salmonier Cottage

Initiative - Phase 1

○ - Capped Iron Bar

All Lines Cut or Open

Linear Measurement Horizontal Ground Distances

Coordinates by GPS from Reference Monument

83G3454 - N 5 236 903.435, E 283 809.131

Scale Factor at Starting Point - 0.999881

SCALE = 1 : 750



M. R. Duffett & Associates Ltd.
December 10, 2008

SCHEDULE "A"

Lot 22

All that piece or parcel of land situate and being East of a Road Reserve off the Salmonier Line, abutted and bounded as follows, that is to say:

Beginning at a point, said point being a capped iron bar set at the Northwestern corner of the land and having grid co-ordinates of North 5,236,814.298 meters and East 281,970.807 meters;

Thence running by Lot 23, South fifty one degrees thirty four minutes fourteen seconds East ($S51^{\circ}34'14''E$) a distance of ninety three decimal six eight three meters (93.683m), to a capped iron bar;

Thence running along a Reservation fifteen meters (15m) wide, South zero degrees eight minutes twenty seven seconds East ($S0^{\circ}08'27''E$) a distance of thirty two decimal nine four three meters (32.943m), to a capped iron bar;

Thence running by Lot 21, North eighty one degrees thirty six minutes thirty nine seconds West ($N81^{\circ}36'39''W$) a distance of eighty one decimal one five four meters (81.154m), to a capped iron bar;

Thence running by the Eastern Limits of a Road Reserve, fifteen meters (15m) wide, North four degrees fifty four minutes thirty eight seconds East ($N04^{\circ}54'38''E$), a distance of seventy nine decimal six two four meters (79.624m) more or less, to the point of beginning.

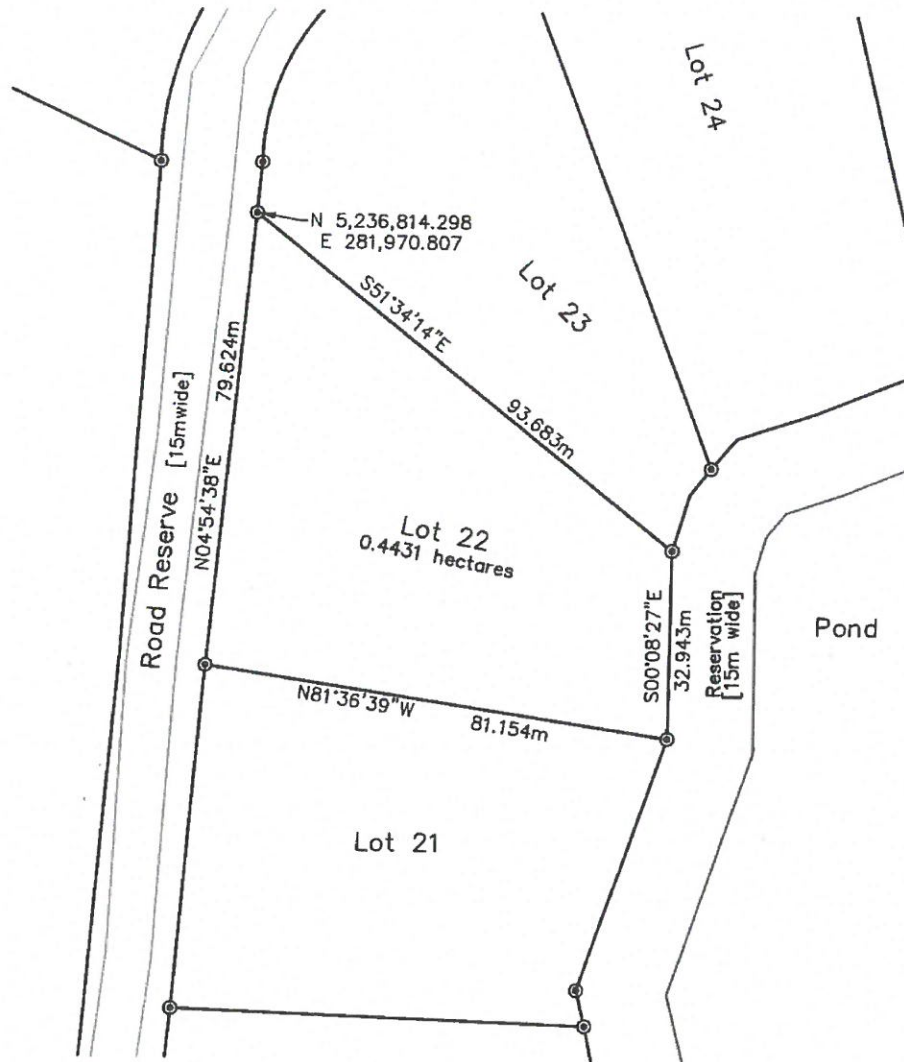
The above described parcel contains an area of zero decimal four four three one hectares (0.4431 ha.), more or less, and being more particularly shown on the drawing annexed hereto.

All bearings are referred to the meridian of fifty three degrees West Longitude of the Modified Three Degree Transverse Mercator Projection for Newfoundland, Zone 1, with NAD83 reference datum.



W.J. Thorne Surveys Limited
October 16, 2009

Schedule "B"



LEGEND

- ⊙ Capped Iron Bar
- Iron Bar
- ⊗ Power Pole
- Power Line

Linear Measurement Horizontal Ground Distances.

All Boundary Lines Cut or Open.

NAD 83 Reference Datum.

Co-ordinates derived by RTK GPS.
Control Monuments 83G3454 & 83G3458
used in Control Tie.



Scale: 1 : 1000

W.J. Thorne Surveys Limited
298 River Road, Blaketown, NL
Job No. 209238 Date : October 16, 2009

SCHEDULE "A"

Lot 32

All that piece or parcel of land situate and being northwest of a Road Reserve, off the Salmonier Line, abutted and bounded as follows, **that is to say:**

Beginning at a point, said point being a capped iron bar set at the Southeastern corner of the land and having grid co-ordinates of North 5,236,823.040 meters and East 281,953.919 meters;

Thence running by Crown Land, North sixty four degrees forty three minutes thirty nine seconds West ($N64^{\circ}43'39''W$) a distance of one hundred thirty eight decimal four three four meters (138.434m), to a capped iron bar;

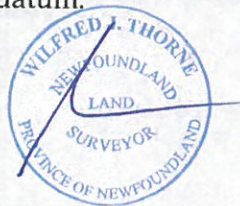
Thence running by Crown Land, North seventeen degrees twenty one minutes zero zero seconds East ($N17^{\circ}21'00''E$) a distance of fifty two decimal three three nine meters (52.339m), to a capped iron bar;

Thence running by Crown Land, South sixty two degrees fifteen minutes forty one seconds East ($S62^{\circ}15'41''E$) a distance of one hundred forty three decimal eight nine one meters (143.891m), to a capped iron bar;

Thence running by the northwestern limits of a Road Reserve, fifteen meters (15m) wide, along the arc of a curve to the left, an arc distance of forty six decimal nine four eight meters (46.948m), said curve having a radius of fifty eight decimal two six seven meters (58.267m), and a chord bearing of South twenty two degrees fifty four minutes zero three seconds West ($S22^{\circ}54'03''W$) and a chord distance of forty five decimal six eight eight meters (45.688m), more or less, to the point of beginning.

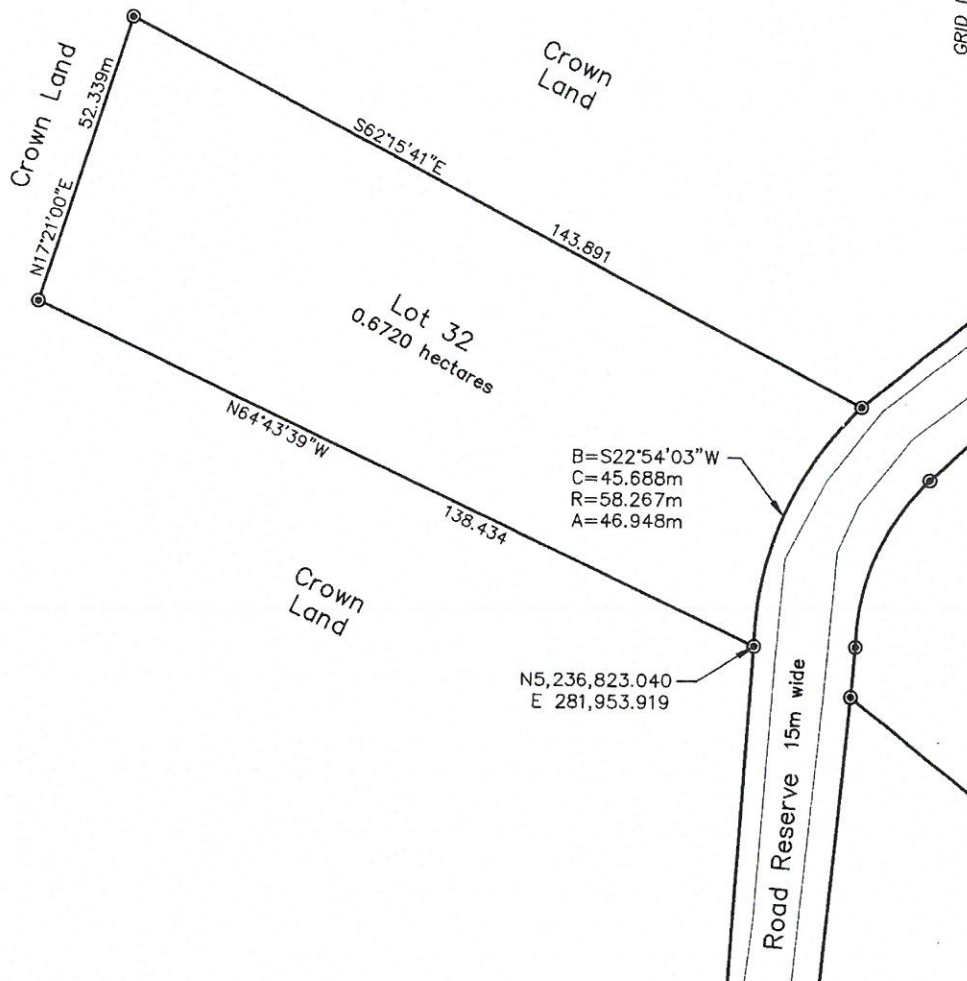
The above described parcel contains an area of zero decimal six seven two zero hectares (0.6720 ha.), more or less, and being more particularly shown on the drawing annexed hereto.

All bearings are referred to the meridian of fifty three degrees West Longitude of the Modified Three Degree Transverse Mercator Projection for Newfoundland, Zone 1, with NAD83 reference datum.



W.J. Thorne Surveys Limited
October 16, 2009

Schedule "B"



LEGEND

- ⊙ Capped Iron Bar
- Iron Bar
- ⊛ Power Pole
- Power Line

Linear Measurement Horizontal Ground Distances.

All Boundary Lines Cut or Open.

NAD 83 Reference Datum.

Co-ordinates derived by RTK GPS.

Control Monuments 83G3454 & 83G3458
used in Control Tie.

Scale: 1 : 1000



W.J. Thorne Surveys Limited

298 River Road, Blaketown, NL

Job No. 209238 Date : October 16, 2009

SCHEDULE "A"

Lot # 74, Salmonier Cottage Lots, Newfoundland and Labrador, Canada

BEGINNING at a point, said point having the following NAD83 coordinates in Zone 1, central meridian 53° west longitude, of the Transverse Mercator Projection as modified for the Province of Newfoundland and Labrador

N 5 235 993.700
E 282 356.867

with reference to Monument number 91008 with Co-ordinates N 5 235 159.049 metres and E 282 467.294 metres and Monument number 83G3458 with Co-ordinates N 5 236 107.125 metres and E 283 279.200 metres;

THENCE running along Lot # 76 south eighty-three degrees fifty-seven minutes zero four seconds west (S83°57'04"W) for a distance of one hundred one decimal six zero two (101.602) metres;

THENCE turning and running along Crown Land north three degrees twenty-seven minutes forty-six seconds west (N3°27'46"W) for a distance of thirty-nine decimal five zero four (39.504) metres;

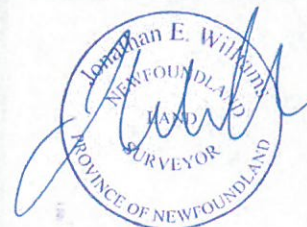
THENCE turning and running along Lot # 73 north eighty-three degrees thirty-eight minutes forty-nine seconds east (N83°38'49"E) for a distance of one hundred three decimal one seven there (103.173) metres;

THENCE turning and running along the western limit of a fifteen (15) metre road reservation south zero one degree fifteen minutes thirty two seconds east (S01°15'32"E) for a distance of forty decimal one five one (40.151) meters, more or less, to the **Point of Beginning**.

All bearings are Grid North NAD83 in Zone 1 of the Transverse Mercator Projection as modified for the Province of Newfoundland;

The above described piece or parcel of land contains an area of 4067.873 square metres, more or less, and is more particularly shown on the drawing hereto attached dated 18 10 2013.

This description and accompanying plan are integral parts necessary to adequately reflect the legal boundary of the subject property and therefor invalid if separated.

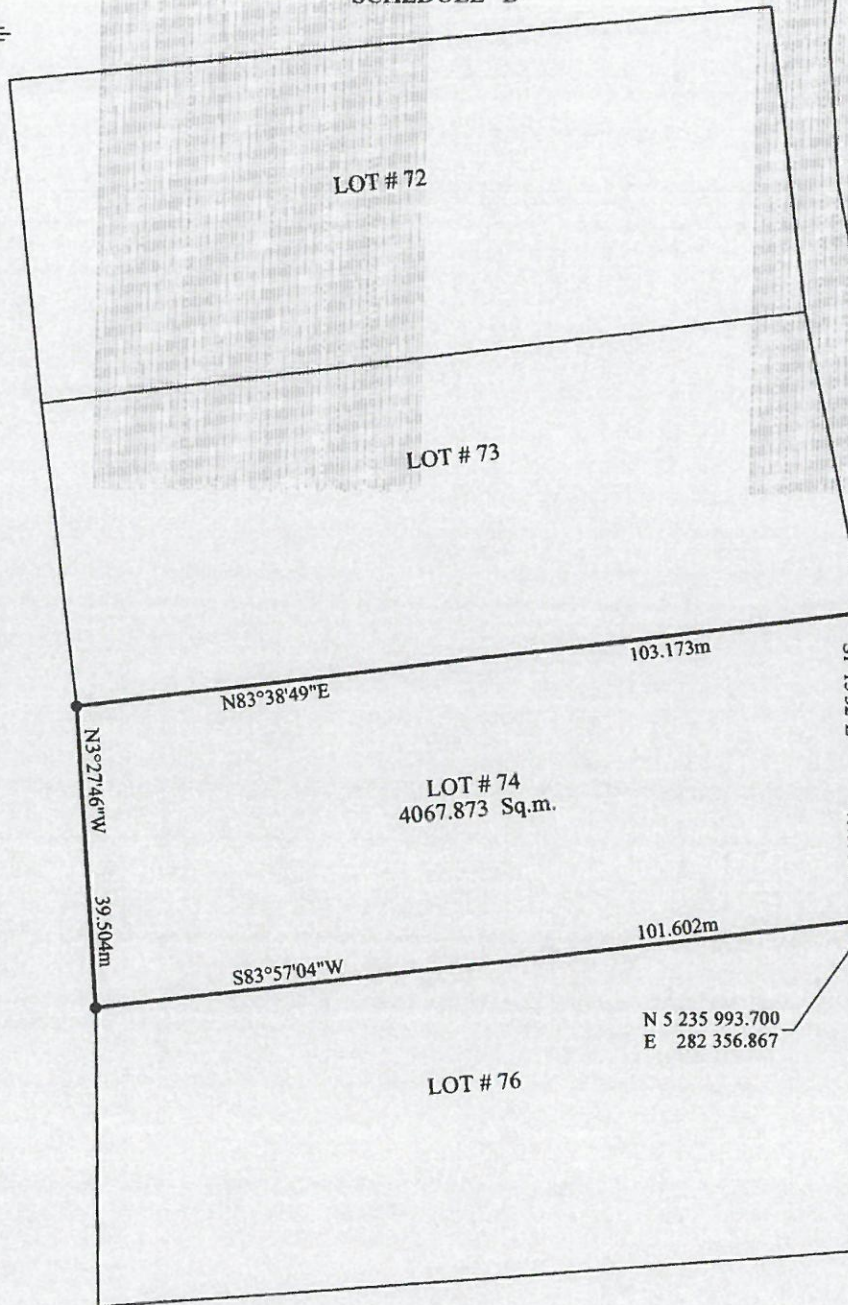


PROJECT# 005-13-E
DATED: 18 10 2013



SCHEDULE "B"

CROWN LAND



ROAD RESERVATION
(15m Wide)

MONUMENTS USED:(NAD 83)

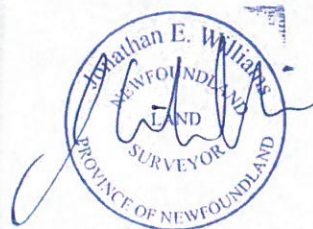
	NORTHING	EASTING
91008	5 235 159.049	282 467.294
83G3458	5 236 107.125	283 279.200

LEGEND:

- A. = anchor
- = placed iron pin
- o.h.w. = overhead wire
- P. = pole
- f.h. = fire hydrant

NOTE: ALL DISTANCES ARE
HORIZONTAL GROUND

DATE: October 18th, 2013
PROJECT NO: 005-13-E



SCALE : 1:750

SCHEDULE "A"

Lot # 76, Salmonier Cottage Lots, Newfoundland and Labrador, Canada

BEGINNING at a point, said point having the following NAD83 coordinates in Zone 1, central meridian 53° west longitude, of the Transverse Mercator Projection as modified for the Province of Newfoundland and Labrador

N 5 235 993.700
E 282 356.867

with reference to Monument number 91008 with Co-ordinates N 5 235 159.049 metres and E 282 467.294 metres and Monument number 83G3458 with Co-ordinates N 5 236 107.125 metres and E 283 279.200 metres;

THENCE running along the western limit of a fifteen (15) metre road reservation south zero three degrees zero four minutes nineteen seconds west (S03°04'19"W) for a distance of forty three decimal seven one two (43.712) metres;

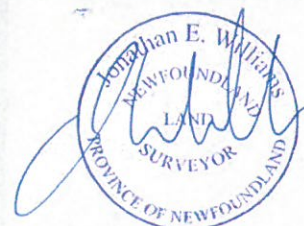
THENCE turning and running along Crown Land south eighty-six degrees sixteen minutes fifty-eight seconds west (S86°16'58"W) for a distance of ninety-eight decimal seven three eight (98.738) metres; **thence** north zero degrees fourteen minutes seventeen seconds west (N0°14'17"W) for a distance of thirty-nine decimal three four four (39.344) metres;

THENCE turning and running along Lot # 74 north eighty-three degrees fifty-seven minutes zero four seconds east (N83°57'04"E) for a distance of one hundred one decimal six zero two (101.602) metres, more or less, to the **Point of Beginning**.

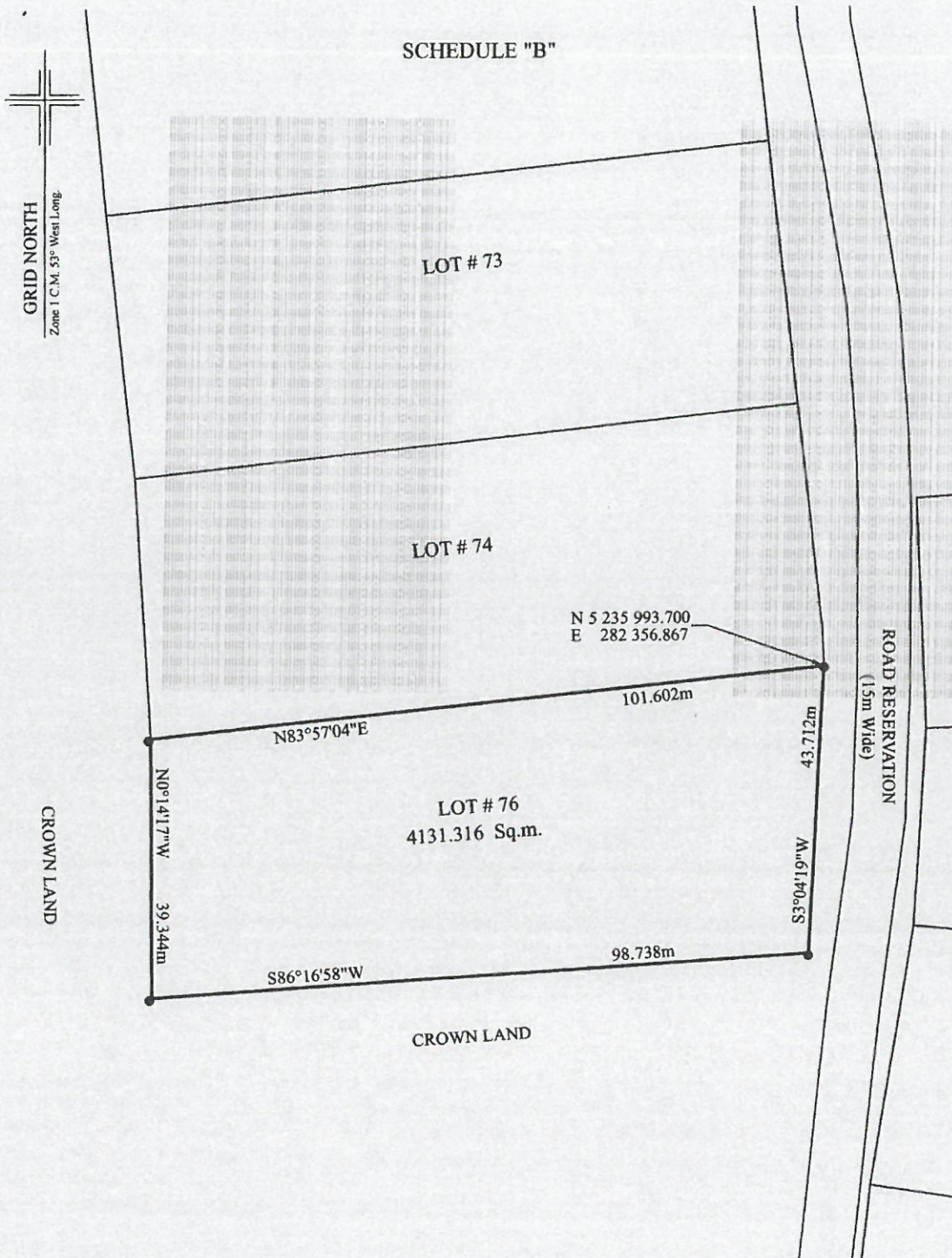
All bearings are Grid North NAD83 in Zone 1 of the Transverse Mercator Projection as modified for the Province of Newfoundland;

The above described piece or parcel of land contains an area of 4131.316 square metres, more or less, and is more particularly shown on the drawing hereto attached dated 18 10 2013.

This description and accompanying plan are integral parts necessary to adequately reflect the legal boundary of the subject property and therefor invalid if separated.



PROJECT# 005-13-E
DATED: 18 10 2013



MONUMENTS USED:(NAD 83)

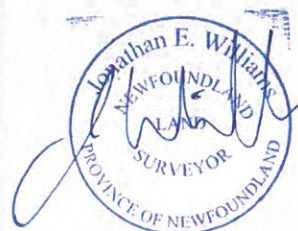
	NORTHING	EASTING
91008	5 235 159.049	282 467.294
83G3458	5 236 107.125	283 279.200

LEGEND:

- A. = anchor
- = placed iron pin
- o.h.w. = overhead wire
- P. = pole
- f.h. = fire hydrant

NOTE: ALL DISTANCES ARE HORIZONTAL GROUND

DATE: October 18th, 2013
PROJECT NO: 005-13-E



—SCALE : 1:750 —

SCHEDULE "A"

Lot # 92, Salmonier Cottage Lots, Newfoundland and Labrador, Canada

BEGINNING at a point, said point having the following NAD83 coordinates in Zone 1, central meridian 53° west longitude, of the Transverse Mercator Projection as modified for the Province of Newfoundland and Labrador

N 5 235 689.592
E 282 117.447

with reference to Monument number 91008 with Co-ordinates N 5 235 159.049 metres and E 282 467.294 metres and Monument number 83G3458 with Co-ordinates N 5 236 107.125 metres and E 283 279.200 metres;

THENCE running along the southwestern limit of a fifteen (15) metre road reservation south forty degrees thirty-five minutes thirty-three seconds east (S40°35'33"E) for a distance of thirty-nine decimal two two one (39.221) metres;

THENCE turning and running along Crown Land south fifty degrees zero two minutes fourteen seconds west (S50°02'14"W) for a distance of ninety-nine decimal eight eight nine (99.889) metres; **thence** north forty degrees thirty-two minutes fifty-six seconds west (N40°32'56"W) for a distance of forty-two decimal zero six one (42.061) metres;

THENCE turning and running along Lot # 93 north fifty-one degrees thirty-nine minutes fifty-seven seconds east (N51°39'57"E) for a distance of ninety-nine decimal nine two eight (99.928) metres, more or less, to the **Point of Beginning**.

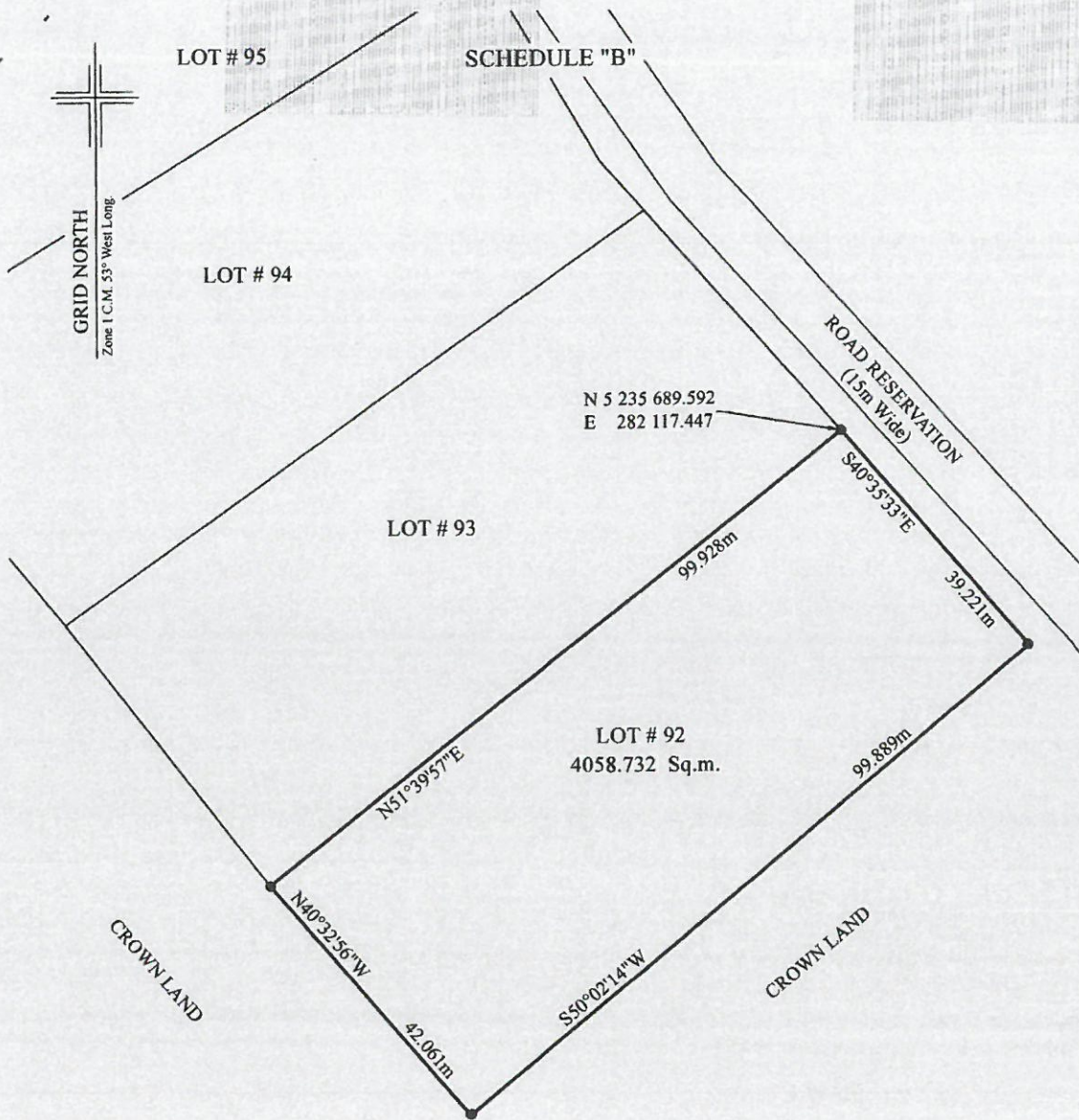
All bearings are Grid North NAD83 in Zone 1 of the Transverse Mercator Projection as modified for the Province of Newfoundland;

The above described piece or parcel of land contains an area of 4058.732 square metres, more or less, and is more particularly shown on the drawing hereto attached dated 18 10 2013.

This description and accompanying plan are integral parts necessary to adequately reflect the legal boundary of the subject property and therefor invalid if separated.



PROJECT# 005-13-E
DATED: 18 10 2013



MONUMENTS USED:(NAD 83)

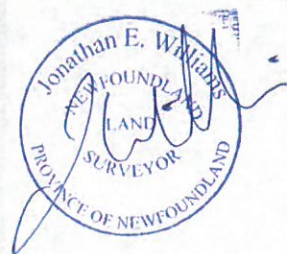
	NORTHING	EASTING
91008	5 235 159.049	282 467.294
83G3458	5 236 107.125	283 279.200

LEGEND:

- A. = anchor
- = placed iron pin
- o.h.w. = overhead wire
- P. = pole
- f.h. = fire hydrant

NOTE: ALL DISTANCES ARE
HORIZONTAL GROUND

DATE: October 18th, 2013
PROJECT NO: 005-13-E



SCALE : 1:750

SCHEDULE "A"

Lot # 93, Salmonier Cottage Lots, Newfoundland and Labrador, Canada

BEGINNING at a point, said point having the following NAD83 coordinates in Zone 1, central meridian 53° west longitude, of the Transverse Mercator Projection as modified for the Province of Newfoundland and Labrador

N 5 235 689.592
E 282 117.447

with reference to Monument number 91008 with Co-ordinates N 5 235 159.049 metres and E 282 467.294 metres and Monument number 83G3458 with Co-ordinates N 5 236 107.125 metres and E 283 279.200 metres;

THENCE running along Lot # 92 south fifty-one degrees thirty-nine minutes fifty-seven seconds west (S51°39'57"W) for a distance of ninety-nine decimal nine two eight (99.928) metres;

THENCE turning and running along Crown Land north thirty-seven degrees twenty-two minutes forty-one seconds west (N37°22'41"W) for a distance of forty-five decimal five two three (45.523) metres;

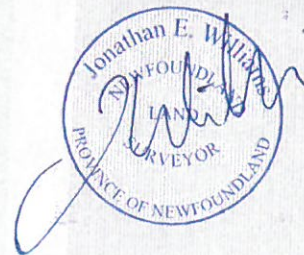
THENCE turning and running along Lot # 94 north fifty-four degrees thirty-three minutes zero six seconds east (N54°33'06"E) for a distance of ninety-seven decimal one five seven (97.157) metres;

THENCE turning and running along the southwestern limit of a fifteen (15) metre road reservation south forty-one degrees twenty minutes thirty-two seconds east (S41°20'32"E) for a distance of forty decimal six eight one (40.681) metres, more or less, to the **Point of Beginning**.

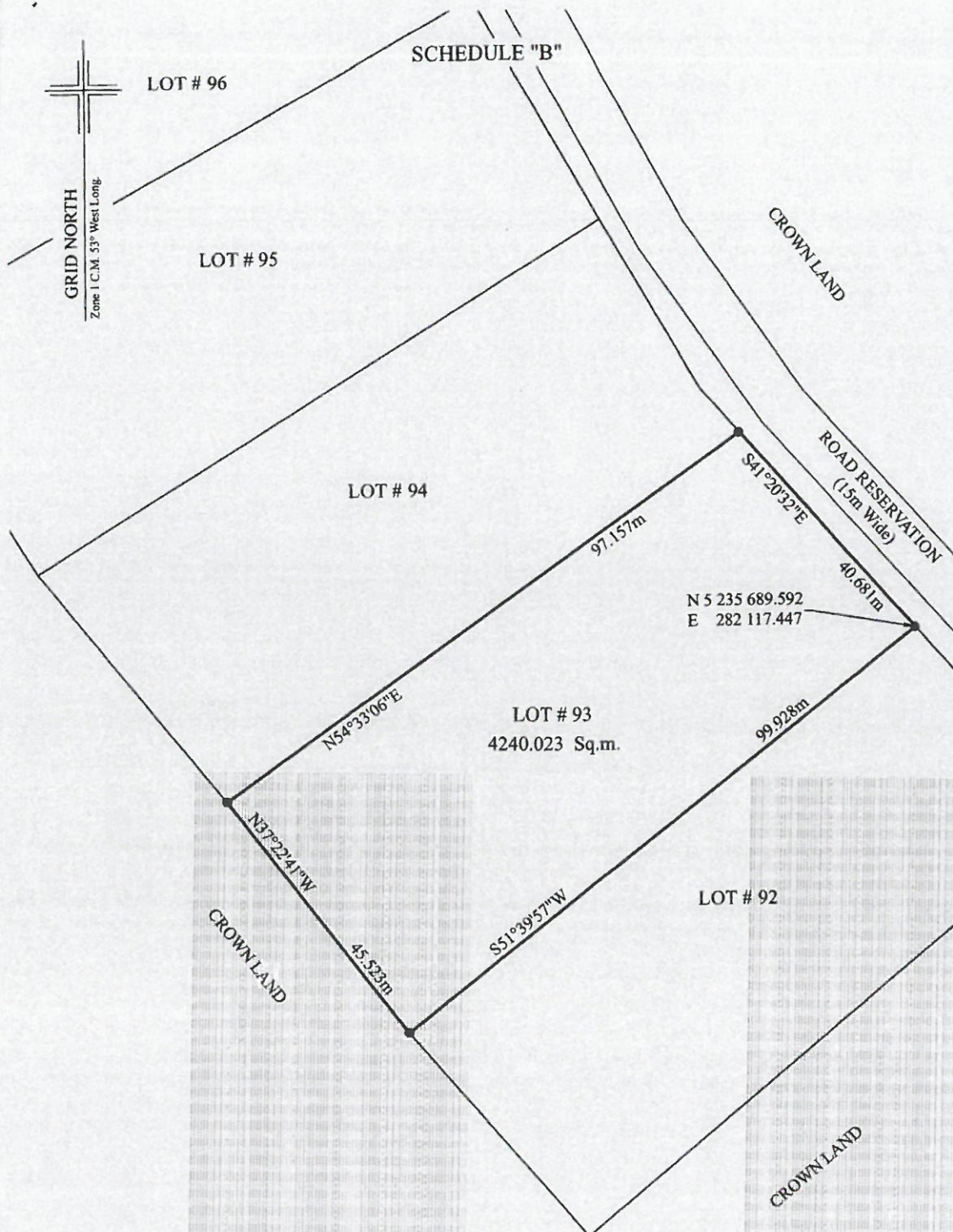
All bearings are Grid North NAD83 in Zone 1 of the Transverse Mercator Projection as modified for the Province of Newfoundland;

The above described piece or parcel of land contains an area of 4240.023 square metres, more or less, and is more particularly shown on the drawing hereto attached dated 18 10 2013.

This description and accompanying plan are integral parts necessary to adequately reflect the legal boundary of the subject property and therefor invalid if separated.



PROJECT# 005-13-E
DATED: 18 10 2013



MONUMENTS USED:(NAD 83)

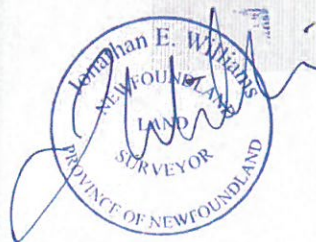
	NORTHING	EASTING
91008	5 235 159.049	282 467.294
83G3458	5 236 107.125	283 279.200

LEGEND:

- A. = anchor
- = placed iron pin
- o.h.w. = overhead wire
- P. = pole
- f.h. = fire hydrant

NOTE: ALL DISTANCES ARE
HORIZONTAL GROUND

DATE: October 18th, 2013
PROJECT NO: 005-13-E



—SCALE : 1:750 —

SCHEDULE "A"

Lot # 94, Salmonier Cottage Lots, Newfoundland and Labrador, Canada

BEGINNING at a point, said point having the following NAD83 coordinates in Zone 1, central meridian 53° west longitude, of the Transverse Mercator Projection as modified for the Province of Newfoundland and Labrador

N 5 235 753.383
E 282 069.333

with reference to Monument number 91008 with Co-ordinates N 5 235 159.049 metres and E 282 467.294 metres and Monument number 83G3458 with Co-ordinates N 5 236 107.125 metres and E 283 279.200 metres;

THENCE running along the southwestern limit of a fifteen (15) metre road reservation south twenty-nine degrees fifty-five minutes seventeen seconds east (S29°55'17"E) for a distance of thirty decimal three seven zero (30.370) metres; **thence** south forty-one degrees twenty minutes thirty-two seconds east (S41°20'32"E) for a distance of nine decimal two two four (9.224) metres;

THENCE turning and running along Lot # 93 south fifty-four degrees thirty-three minutes zero six seconds west (S54°33'06"W) for a distance of ninety-seven decimal one five seven (97.157) metres;

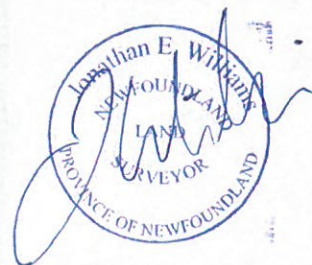
THENCE turning and running along Crown Land north thirty-eight degrees fifty-three minutes forty-nine seconds west (N38°53'49"W) for a distance of forty-five decimal seven five nine (45.759) metres;

THENCE turning and running along Lot # 95 north fifty-eight degrees zero four minutes twenty-seven seconds east (N58°04'27"E) for a distance of one hundred two decimal zero eight zero (102.080) metres, more or less, to the **Point of Beginning**.

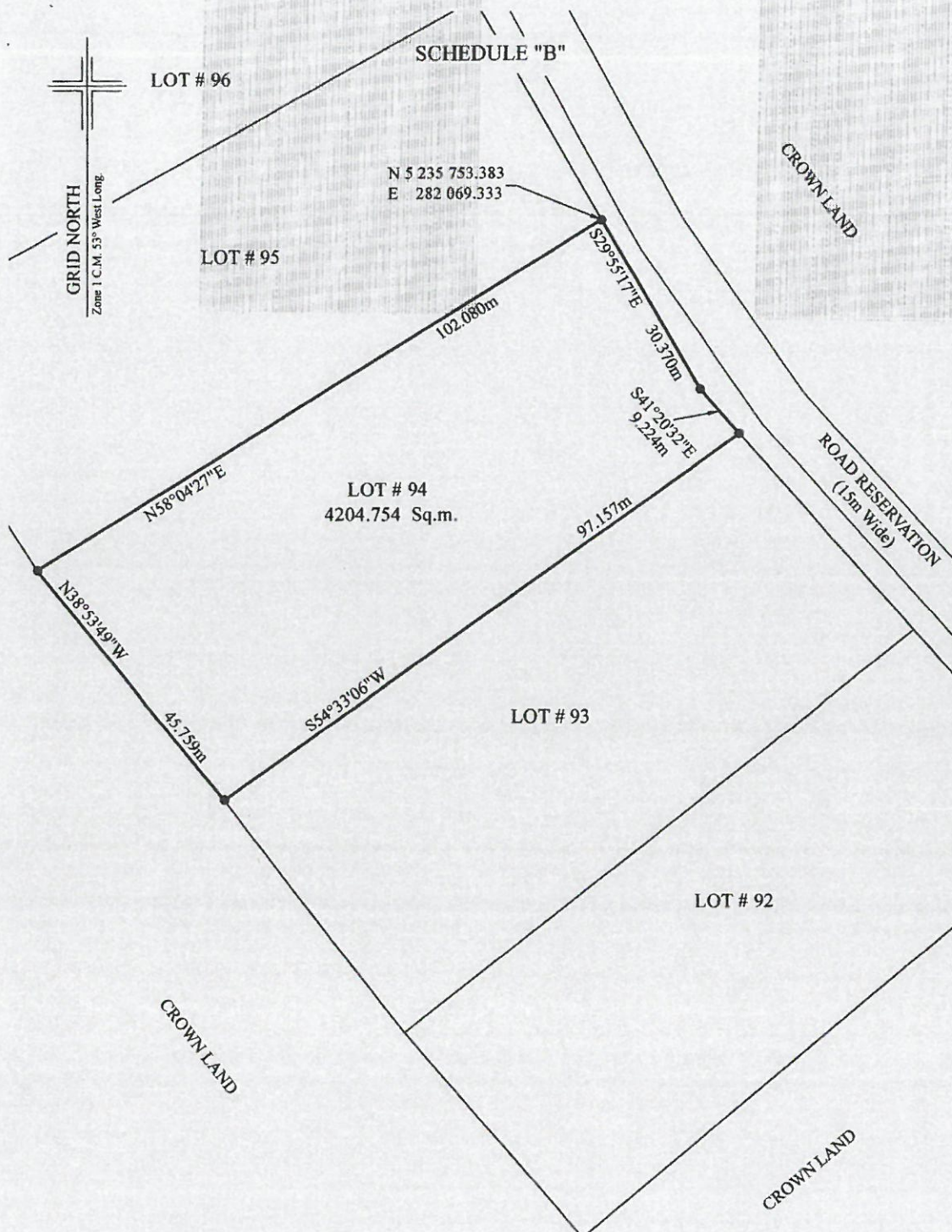
All bearings are Grid North NAD83 in Zone 1 of the Transverse Mercator Projection as modified for the Province of Newfoundland;

The above described piece or parcel of land contains an area of 4204.754 square metres, more or less, and is more particularly shown on the drawing hereto attached dated 18 10 2013.

This description and accompanying plan are integral parts necessary to adequately reflect the legal boundary of the subject property and therefor invalid if separated.



PROJECT# 005-13-E
DATED: 18 10 2013



MONUMENTS USED:(NAD 83)

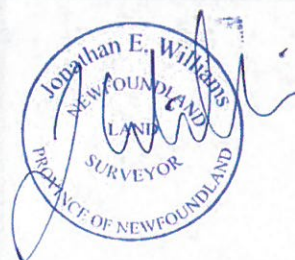
	NORTHING	EASTING
91008	5 235 159.049	282 467.294
83G3458	5 236 107.125	283 279.200

LEGEND:

- A. = anchor
- = placed iron pin
- o.h.w. = overhead wire
- P. = pole
- f.h. = fire hydrant

NOTE: ALL DISTANCES ARE HORIZONTAL GROUND

DATE: October 18th, 2013
PROJECT NO: 005-13-E



SCALE: 1:750

SCHEDULE "A"

Lot # 95, Salmonier Cottage Lots, Newfoundland and Labrador, Canada

BEGINNING at a point, said point having the following NAD83 coordinates in Zone 1, central meridian 53° west longitude, of the Transverse Mercator Projection as modified for the Province of Newfoundland and Labrador

N 5 235 753.383
E 282 069.333

with reference to Monument number 91008 with Co-ordinates N 5 235 159.049 metres and E 282 467.294 metres and Monument number 83G3458 with Co-ordinates N 5 236 107.125 metres and E 283 279.200 metres;

THENCE running along Lot # 94 south fifty-eight degrees zero four minutes twenty-seven seconds west (S58°04'27"W) for a distance of one hundred two decimal zero eight zero (102.080) metres;

THENCE turning and running along Crown Land north thirty-one degrees fifty-eight minutes zero four seconds west (N31°58'04"W) for a distance of forty-four decimal two zero two (44.202) metres;

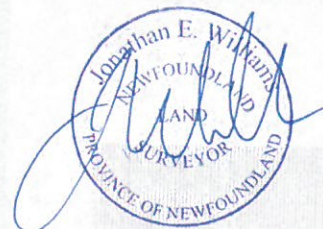
THENCE turning and running along Lot # 96 north sixty degrees fifty-three minutes forty-three seconds east (N60°53'43"E) for a distance of one hundred three decimal six zero seven (103.607) metres;

THENCE turning and running along the southwestern limit of a fifteen (15) metre road reservation south twenty-nine degrees fifty-five minutes seventeen seconds east (S29°55'17"E) for a distance of thirty-nine decimal one two six (39.126) metres, more or less, to the **Point of Beginning**.

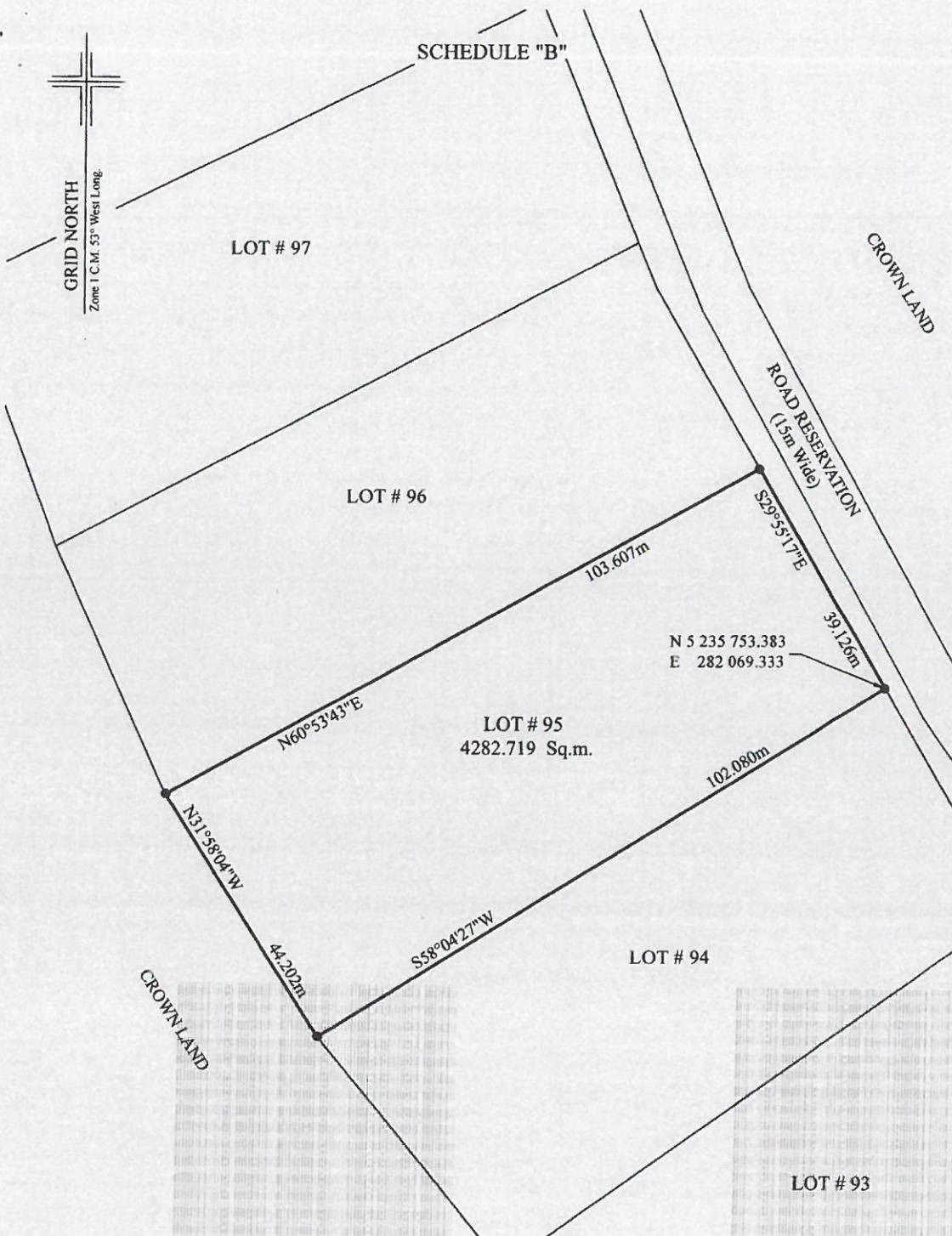
All bearings are Grid North NAD83 in Zone 1 of the Transverse Mercator Projection as modified for the Province of Newfoundland;

The above described piece or parcel of land contains an area of 4282.719 square metres, more or less, and is more particularly shown on the drawing hereto attached dated 18 10 2013.

This description and accompanying plan are integral parts necessary to adequately reflect the legal boundary of the subject property and therefor invalid if separated.



PROJECT# 005-13-E
DATED: 18 10 2013



MONUMENTS USED:(NAD 83)

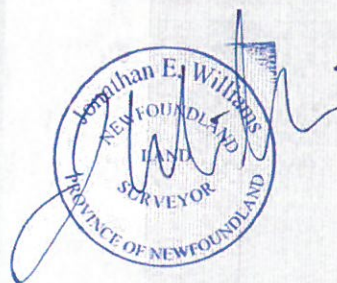
	NORTHING	EASTING
91008	5 235 159.049	282 467.294
83G3458	5 236 107.125	283 279.200

LEGEND:

A. = anchor
 ● = placed iron pin
 o.h.w. = overhead wire
 P. = pole
 f.h. = fire hydrant

**NOTE: ALL DISTANCES ARE
HORIZONTAL GROUND**

DATE: October 18th, 2013
 PROJECT NO: 005-13-E



SCALE: 1:750

SCHEDULE "A"

Lot # 96, Salmonier Cottage Lots, Newfoundland and Labrador, Canada

BEGINNING at a point, said point having the following NAD83 coordinates in Zone 1, central meridian 53° west longitude, of the Transverse Mercator Projection as modified for the Province of Newfoundland and Labrador

N 5 235 822.113
E 282 031.002

with reference to Monument number 91008 with Co-ordinates N 5 235 159.049 metres and E 282 467.294 metres and Monument number 83G3458 with Co-ordinates N 5 236 107.125 metres and E 283 279.200 metres;

THENCE running along the southwestern limit of a fifteen (15) metre road reservation south twenty-two degrees zero two minutes twenty-seven seconds east (S22°02'27"E) for a distance of seven decimal seven four three (7.743) metres; **thence** south twenty-nine degrees fifty-five minutes seventeen seconds east (S29°55'17"E) for a distance of thirty-one decimal eight nine four (31.894) metres;

THENCE turning and running along Lot # 95 south sixty degrees fifty-three minutes forty-three seconds west (S60°53'43"W) for a distance of one hundred three decimal six zero seven (103.607) metres;

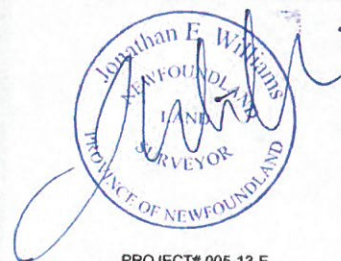
THENCE turning and running along Crown Land north twenty-four degrees zero one minute forty-eight seconds west (N24°01'48"W) for a distance of forty-one decimal nine one four (41.914) metres;

THENCE turning and running along Lot # 97 north sixty-two degrees zero eight minutes twelve seconds east (N62°08'12"E) for a distance of one hundred decimal four two one (100.421) metres, more or less, to the **Point of Beginning**.

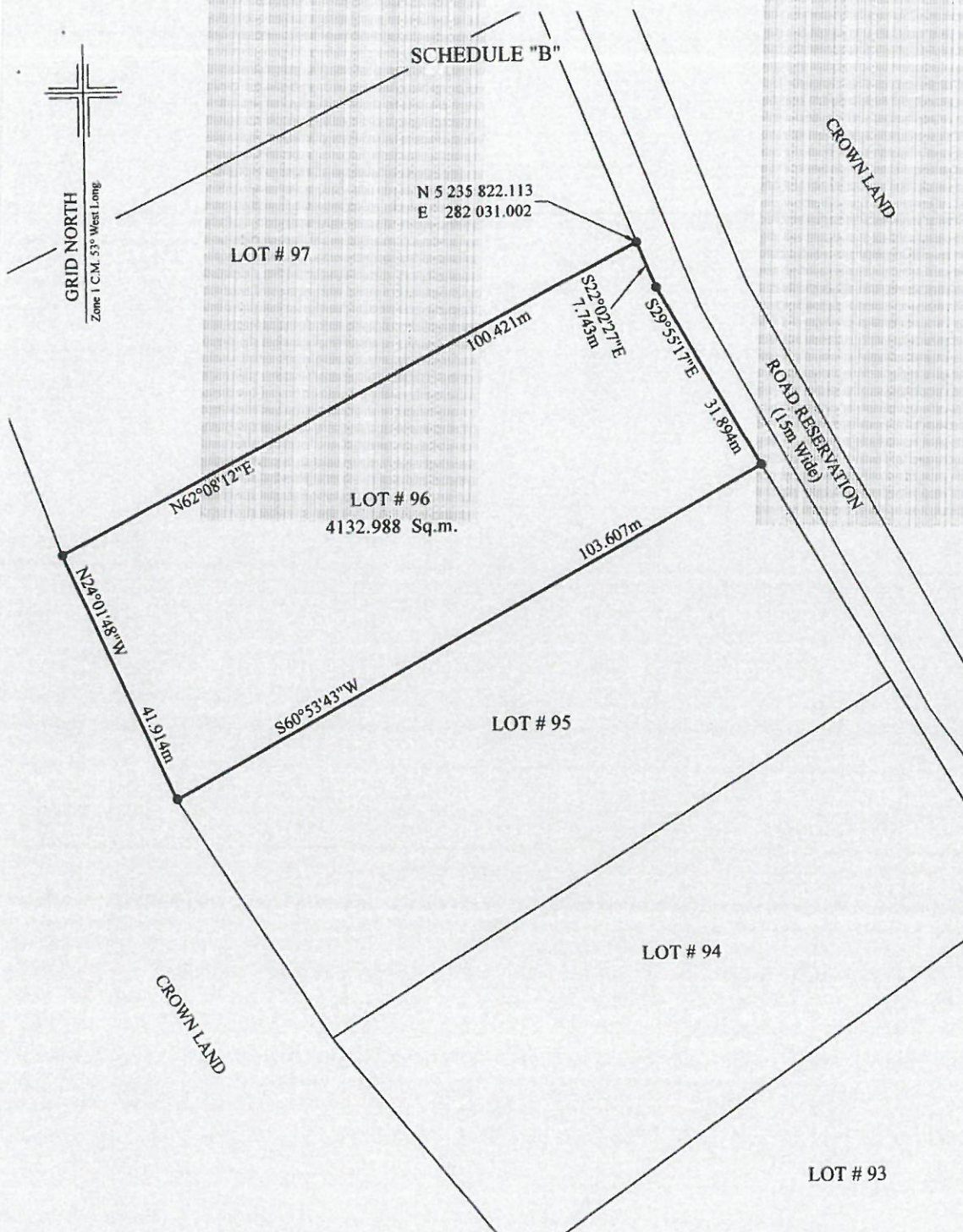
All bearings are Grid North NAD83 in Zone 1 of the Transverse Mercator Projection as modified for the Province of Newfoundland;

The above described piece or parcel of land contains an area of 4132.988 square metres, more or less, and is more particularly shown on the drawing hereto attached dated 18 10 2013.

This description and accompanying plan are integral parts necessary to adequately reflect the legal boundary of the subject property and therefor invalid if separated.



PROJECT# 005-13-E
DATED: 18 10 2013



MONUMENTS USED:(NAD 83)

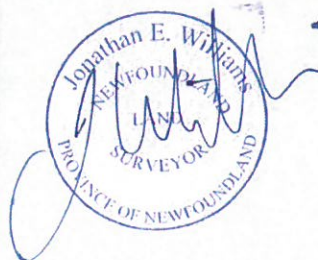
	NORTHING	EASTING
91008	5 235 159.049	282 467.294
83G3458	5 236 107.125	283 279.200

LEGEND:

- A. = anchor
- = placed iron pin
- o.h.w. = overhead wire
- P. = pole
- f.h. = fire hydrant

NOTE: ALL DISTANCES ARE
HORIZONTAL GROUND

DATE: October 18th, 2013
PROJECT NO: 005-13-E



SCALE : 1:750

SCHEDULE "A"

Lot # 97, Salmonier Cottage Lots, Newfoundland and Labrador, Canada

BEGINNING at a point, said point having the following NAD83 coordinates in Zone 1, central meridian 53° west longitude, of the Transverse Mercator Projection as modified for the Province of Newfoundland and Labrador

N 5 235 822.113
E 282 031.002

with reference to Monument number 91008 with Co-ordinates N 5 235 159.049 metres and E 282 467.294 metres and Monument number 83G3458 with Co-ordinates N 5 236 107.125 metres and E 283 279.200 metres;

THENCE running along Lot # 96 south sixty-two degrees zero eight minutes twelve seconds west (S62°08'12"W) for a distance of one hundred decimal four two one (100.421) metres;

THENCE turning and running along Crown Land north twenty degrees eleven minutes thirty-four seconds west (N20°11'34"W) for a distance of forty-two decimal nine nine five (42.995) metres;

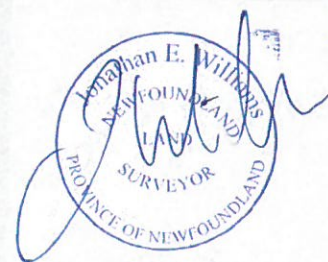
THENCE turning and running along Lot # 98 north sixty-three degrees fifty-three minutes thirty-three seconds east (N63°53'33"E) for a distance of ninety-eight decimal seven six five (98.765) metres;

THENCE turning and running along the southwestern limit of a fifteen (15) metre road reservation south twenty-two degrees zero two minutes twenty-seven seconds east (S22°02'27"E) for a distance of thirty-nine decimal seven eight nine (39.789) metres, more or less, to the **Point of Beginning**.

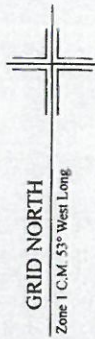
All bearings are Grid North NAD83 in Zone 1 of the Transverse Mercator Projection as modified for the Province of Newfoundland;

The above described piece or parcel of land contains an area of 4099.385 square metres, more or less, and is more particularly shown on the drawing hereto attached dated 18 10 2013.

This description and accompanying plan are integral parts necessary to adequately reflect the legal boundary of the subject property and therefor invalid if separated.



PROJECT# 005-13-E
DATED: 18 10 2013



SCHEDULE "B"

LOT # 111

LOT # 100

LOT # 112

LOT # 99

S62°07'12"W

LOT # 98

ROAD RESERVATION
(15m wide)

98.765m

S22°02'27"E

39.789m

N 5 235 822.113
E 282 031.002

CROWN LAND

N63°53'33"E

LOT # 97
4099.385 Sq.m.

100.421m

N20°11'34"W

42.995m

S62°08'12"W

LOT # 96

MONUMENTS USED: (NAD 83)

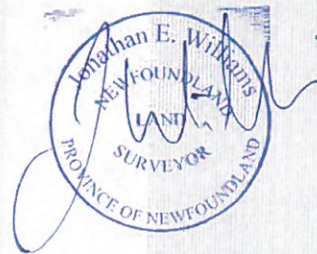
	NORTHING	EASTING
91008	5 235 159.049	282 467.294
83G3458	5 236 107.125	283 279.200

LEGEND:

A. = anchor
● = placed iron pin
o.h.w. = overhead wire
P. = pole
f.h. = fire hydrant

NOTE: ALL DISTANCES ARE
HORIZONTAL GROUND

DATE: October 18th, 2013
PROJECT NO: 005-13-E



SCALE: 1:750

SCHEDULE "A"

Lot # 98, Salmonier Cottage Lots, Newfoundland and Labrador, Canada

BEGINNING at a point, said point having the following NAD83 coordinates in Zone 1, central meridian 53° west longitude, of the Transverse Mercator Projection as modified for the Province of Newfoundland and Labrador

N 5 235 900.388
E 281 999.205

with reference to Monument number 91008 with Co-ordinates N 5 235 159.049 metres and E 282 467.294 metres and Monument number 83G3458 with Co-ordinates N 5 236 107.125 metres and E 283 279.200 metres;

THENCE running along the southwestern limit of a fifteen (15) metre road reservation south twenty-two degrees ten minutes zero four seconds east (S22°10'04"E) for a distance of forty-four decimal six nine eight (44.698) metres;

THENCE turning and running along Lot # 97 south sixty-three degrees fifty-three minutes thirty-three seconds west (S63°53'33"W) for a distance of ninety-eight decimal seven six five (98.765) metres;

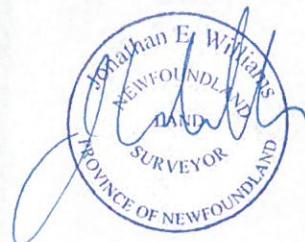
THENCE turning and running along Crown Land north twenty-one degrees zero one minute twenty-eight seconds west (N21°01'28"W) for a distance of forty-one decimal seven one nine (41.719) metres;

THENCE turning and running along Lot # 99 north sixty-two degrees zero seven minutes twelve seconds east (N62°07'12"E) for a distance of ninety-eight decimal one eight six (98.186) metres, more or less, to the **Point of Beginning**.

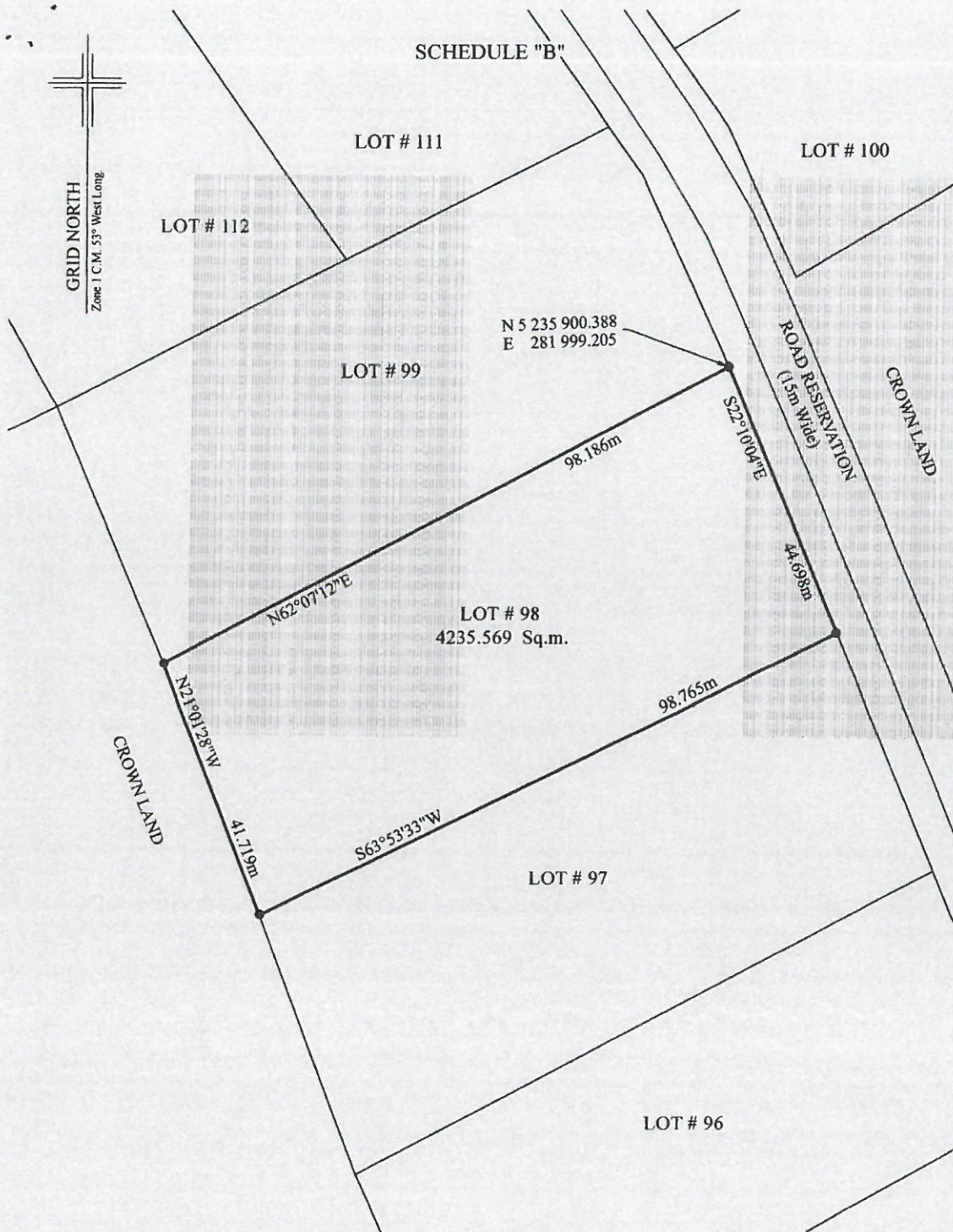
All bearings are Grid North NAD83 in Zone 1 of the Transverse Mercator Projection as modified for the Province of Newfoundland;

The above described piece or parcel of land contains an area of 4235.569 square metres, more or less, and is more particularly shown on the drawing hereto attached dated 18 10 2013.

This description and accompanying plan are integral parts necessary to adequately reflect the legal boundary of the subject property and therefor invalid if separated.



PROJECT# 005-13-E
DATED: 18 10 2013



MONUMENTS USED:(NAD 83)

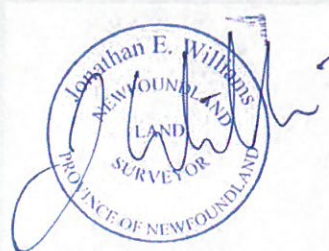
	NORTHING	EASTING
91008	5 235 159.049	282 467.294
83G3458	5 236 107.125	283 279.200

LEGEND:

A. = anchor
 ● = placed iron pin
 o.h.w. = overhead wire
 P. = pole
 f.h. = fire hydrant

NOTE: ALL DISTANCES ARE
 HORIZONTAL GROUND

DATE: October 18th, 2013
 PROJECT NO: 005-13-E



—SCALE : 1:750—

SCHEDULE "A"

Lot # 100, Salmonier Cottage Lots, Newfoundland and Labrador, Canada

BEGINNING at a point, said point having the following NAD83 coordinates in Zone 1, central meridian 53° west longitude, of the Transverse Mercator Projection as modified for the Province of Newfoundland and Labrador

N 5 235 949.387
E 281 990.551

with reference to Monument number 91008 with Co-ordinates N 5 235 159.049 metres and E 282 467.294 metres and Monument number 83G3458 with Co-ordinates N 5 236 107.125 metres and E 283 279.200 metres;

THENCE running along Lot # 101 north fifty-nine degrees zero nine minutes nineteen seconds east (N59°09'19"E) for a distance of one hundred six decimal seven seven three (106.773) metres;

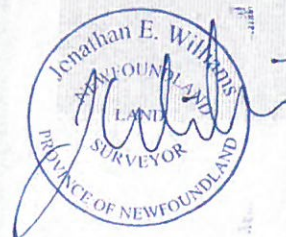
THENCE turning and running along Crown Land south thirty-three degrees zero three minutes zero nine seconds east (S33°03'09"E) for a distance of forty decimal four one six (40.416) metres; **thence** south fifty-nine degrees twenty-three minutes fifty-three seconds west (S59°23'53"W) for a distance of one hundred ten decimal one six nine (110.169) metres;

THENCE turning and running along the northeastern limit of a fifteen (15) metre road reservation north twenty-four degrees seventeen minutes thirty-four seconds west (N24°17'34"W) for a distance of twenty-five decimal six two three (25.623) metres; **thence** north thirty-five degrees zero eight minutes twenty seconds west (N35°08'20"W) for a distance of fourteen decimal five zero four (14.504) metres, more or less, to the **Point of Beginning**.

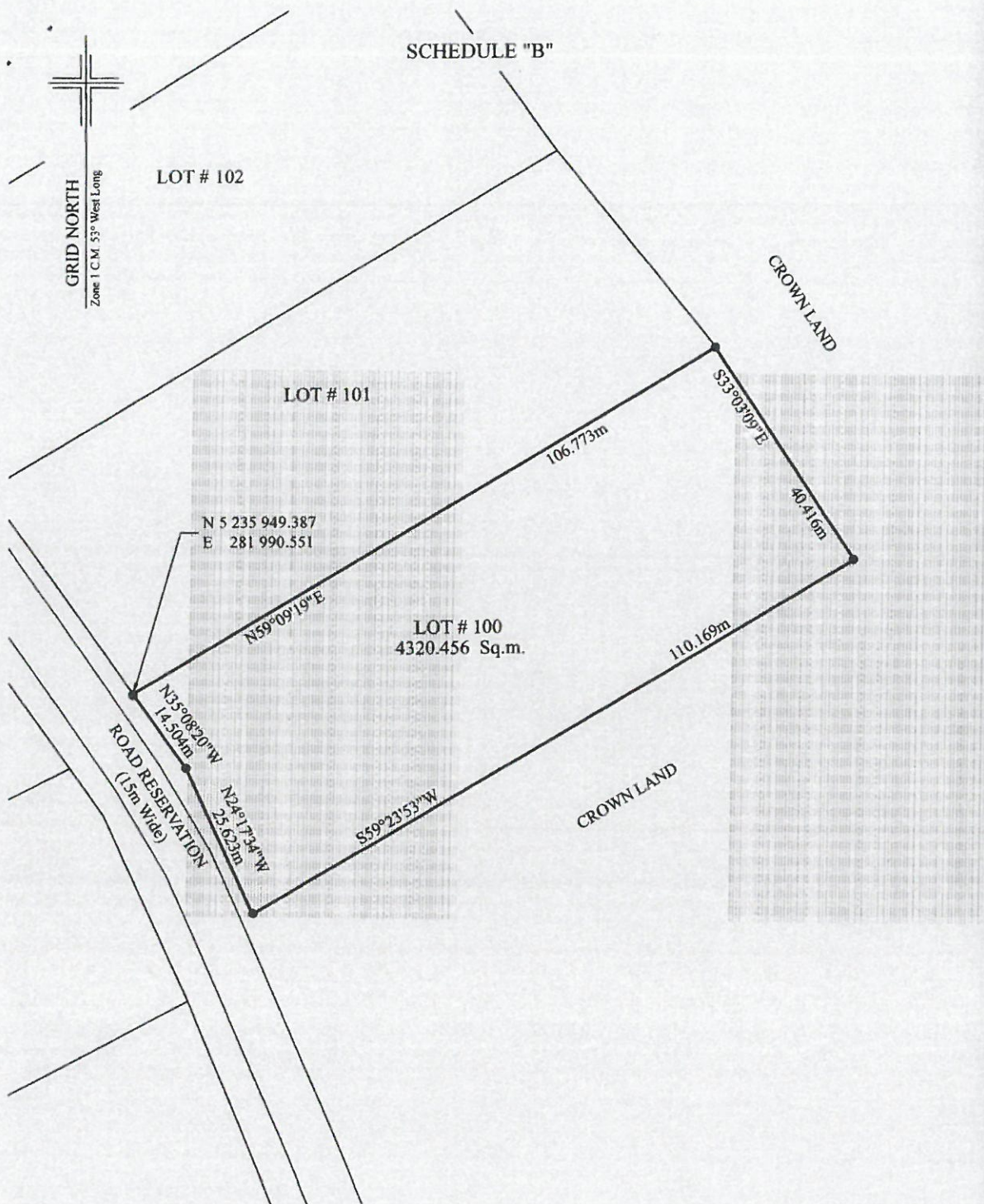
All bearings are Grid North NAD83 in Zone 1 of the Transverse Mercator Projection as modified for the Province of Newfoundland;

The above described piece or parcel of land contains an area of 4320.456 square metres, more or less, and is more particularly shown on the drawing hereto attached dated 18 10 2013.

This description and accompanying plan are integral parts necessary to adequately reflect the legal boundary of the subject property and therefor invalid if separated.



PROJECT# 005-13-E
DATED: 18 10 2013



MONUMENTS USED:(NAD 83)

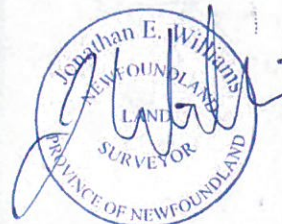
	NORTHING	EASTING
91008	5 235 159.049	282 467.294
83G3458	5 236 107.125	283 279.200

LEGEND:

- A. = anchor
- = placed iron pin
- o.h.w. = overhead wire
- P. = pole
- f.h. = fire hydrant

NOTE: ALL DISTANCES ARE
HORIZONTAL GROUND

DATE: October 18th, 2013
PROJECT NO: 005-13-E



SCALE : 1:750

SCHEDULE "A"

Lot # 101, Salmonier Cottage Lots, Newfoundland and Labrador, Canada

BEGINNING at a point, said point having the following NAD83 coordinates in Zone 1, central meridian 53° west longitude, of the Transverse Mercator Projection as modified for the Province of Newfoundland and Labrador

N 5 235 949.387
E 281 990.551

with reference to Monument number 91008 with Co-ordinates N 5 235 159.049 metres and E 282 467.294 metres and Monument number 83G3458 with Co-ordinates N 5 236 107.125 metres and E 283 279.200 metres;

THENCE running along the northeastern limit of a fifteen (15) metre road reservation north thirty-five degrees zero eight minutes twenty seconds west (N35°08'20"W) for a distance of thirty-nine decimal eight zero four (39.804) metres;

THENCE turning and running along Lot # 102 north fifty-nine degrees zero six minutes thirty-two seconds east (N59°06'32"E) for a distance of one hundred four decimal two seven six (104.276) metres;

THENCE turning and running along Crown Land south thirty-eight degrees forty-one minutes ten seconds east (S38°41'10"E) for a distance of forty decimal one five two (40.152) metres;

THENCE turning and running along Lot # 100 south fifty-nine degrees zero nine minutes nineteen seconds west (S59°09'19"W) for a distance of one hundred six decimal seven seven three (106.773) metres, more or less, to the **Point of Beginning**.

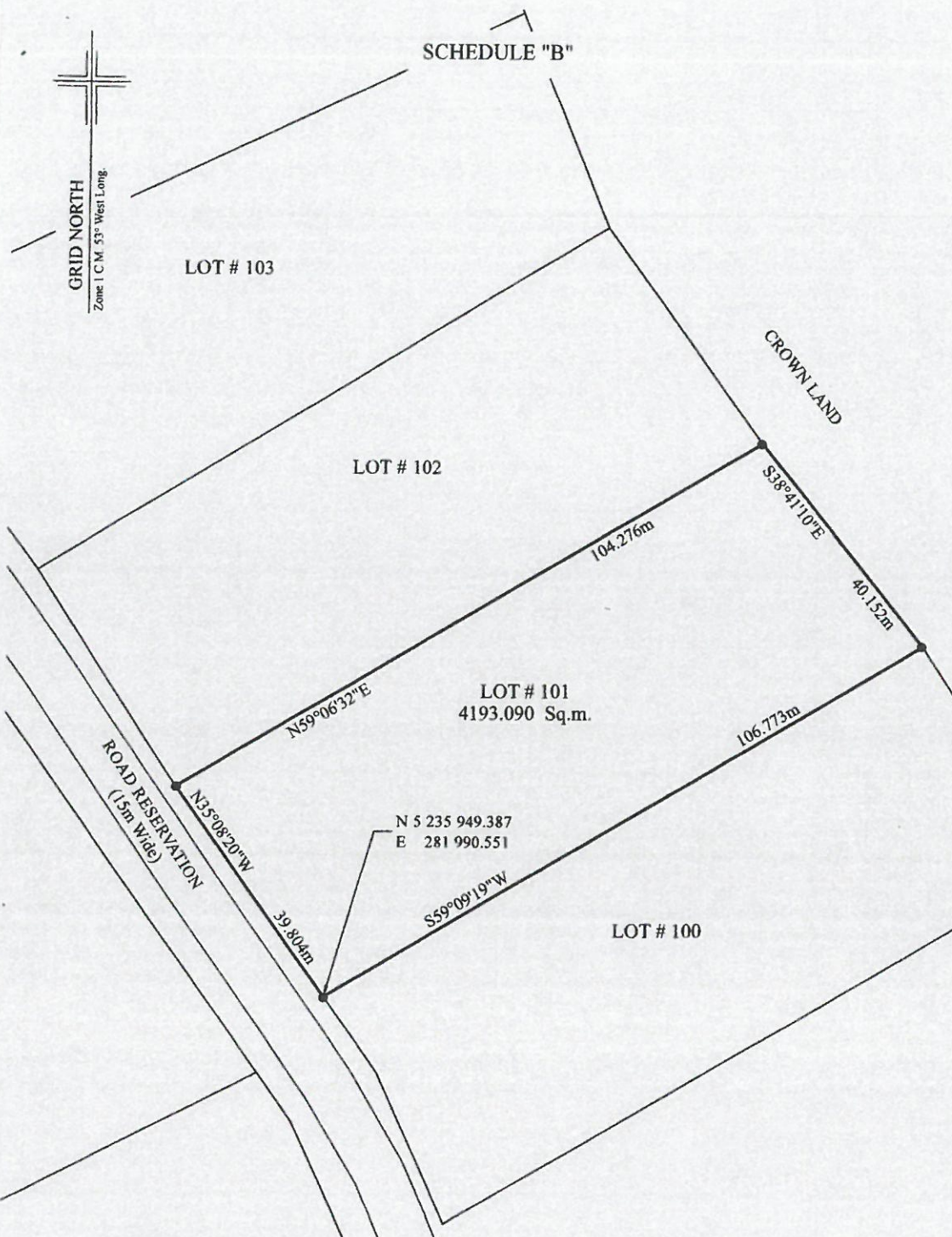
All bearings are Grid North NAD83 in Zone 1 of the Transverse Mercator Projection as modified for the Province of Newfoundland;

The above described piece or parcel of land contains an area of 4193.090 square metres, more or less, and is more particularly shown on the drawing hereto attached dated 18 10 2013.

This description and accompanying plan are integral parts necessary to adequately reflect the legal boundary of the subject property and therefor invalid if separated.



PROJECT# 005-13-E
DATED: 18 10 2013



MONUMENTS USED:(NAD 83)

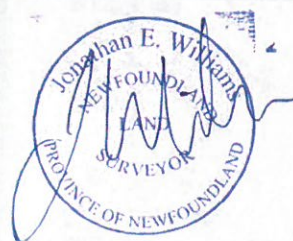
	NORTHING	EASTING
91008	5 235 159.049	282 467.294
83G3458	5 236 107.125	283 279.200

LEGEND:

A. = anchor
 ● = placed iron pin
 o.h.w. = overhead wire
 P. = pole
 f.h. = fire hydrant

NOTE: ALL DISTANCES ARE
HORIZONTAL GROUND

DATE: October 18th, 2013
 PROJECT NO: 005-13-E



—SCALE : 1:750—

SCHEDULE "A"

Lot # 102, Salmonier Cottage Lots, Newfoundland and Labrador, Canada

BEGINNING at a point, said point having the following NAD83 coordinates in Zone 1, central meridian 53° west longitude, of the Transverse Mercator Projection as modified for the Province of Newfoundland and Labrador

N 5 236 015.316
E 281 946.112

with reference to Monument number 91008 with Co-ordinates N 5 235 159.049 metres and E 282 467.294 metres and Monument number 83G3458 with Co-ordinates N 5 236 107.125 metres and E 283 279.200 metres;

THENCE running along Lot # 103 north fifty-eight degrees twenty-seven minutes fifty-two seconds east (N58°27'52"E) for a distance of one hundred two decimal one one one (102.111) metres;

THENCE turning and running along Crown Land south thirty-five degrees forty-eight minutes zero six seconds east (S35°48'06"E) for a distance of forty decimal nine nine seven (40.997) metres;

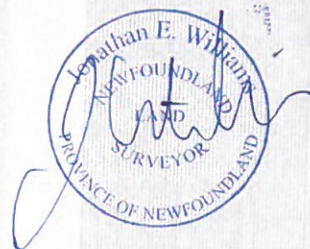
THENCE turning and running along Lot # 101 south fifty-nine degrees zero six minutes thirty-two seconds west (S59°06'32"W) for a distance of one hundred four decimal two seven six (104.276) metres;

THENCE turning and running along the northeastern limit of a fifteen (15) metre road reservation north thirty-two degrees forty-nine minutes eighteen seconds west (N32°49'18"W) for a distance of thirty-nine decimal seven two zero (39.720) metres, more or less, to the **Point of Beginning**.

All bearings are Grid North NAD83 in Zone 1 of the Transverse Mercator Projection as modified for the Province of Newfoundland;

The above described piece or parcel of land contains an area of 4157.054 square metres, more or less, and is more particularly shown on the drawing hereto attached dated 18 10 2013.

This description and accompanying plan are integral parts necessary to adequately reflect the legal boundary of the subject property and therefor invalid if separated.



PROJECT# 005-13-E
DATED: 18 10 2013

SCHEDULE "A"

Lot # 103, Salmonier Cottage Lots, Newfoundland and Labrador, Canada

BEGINNING at a point, said point having the following NAD83 coordinates in Zone 1, central meridian 53° west longitude, of the Transverse Mercator Projection as modified for the Province of Newfoundland and Labrador

N 5 236 015.316
E 281 946.112

with reference to Monument number 91008 with Co-ordinates N 5 235 159.049 metres and E 282 467.294 metres and Monument number 83G3458 with Co-ordinates N 5 236 107.125 metres and E 283 279.200 metres;

THENCE running along the northeastern limit of a fifteen (15) metre road reservation north thirty-six degrees twenty-four minutes seventeen seconds west (N36°24'17"W) for a distance of thirty decimal two six zero (30.260) metres; **thence** north twelve degrees twenty-one minutes fifty-two seconds west (N12°21'52"W) for a distance of sixteen decimal eight seven one (16.871) metres;

THENCE turning and running along Lot # 104 north sixty-four degrees thirty-six minutes forty-six seconds east (N64°36'46"E) for a distance of one hundred five decimal three seven seven (105.377) metres;

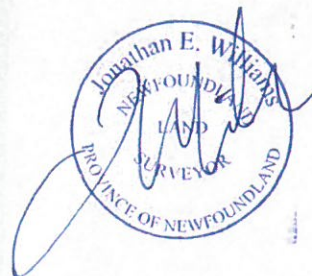
THENCE turning and running along Crown Land south twenty-two degrees twenty minutes thirty-five seconds east (S22°20'35"E) for a distance of thirty-five decimal two five three (35.253) metres;

THENCE turning and running along Lot #102 south fifty-eight degrees twenty-seven minutes fifty-two seconds west (S58°27'52"W) for a distance of one hundred two decimal one one one (102.111) metres, more or less, to the **Point of Beginning**.

All bearings are Grid North NAD83 in Zone 1 of the Transverse Mercator Projection as modified for the Province of Newfoundland;

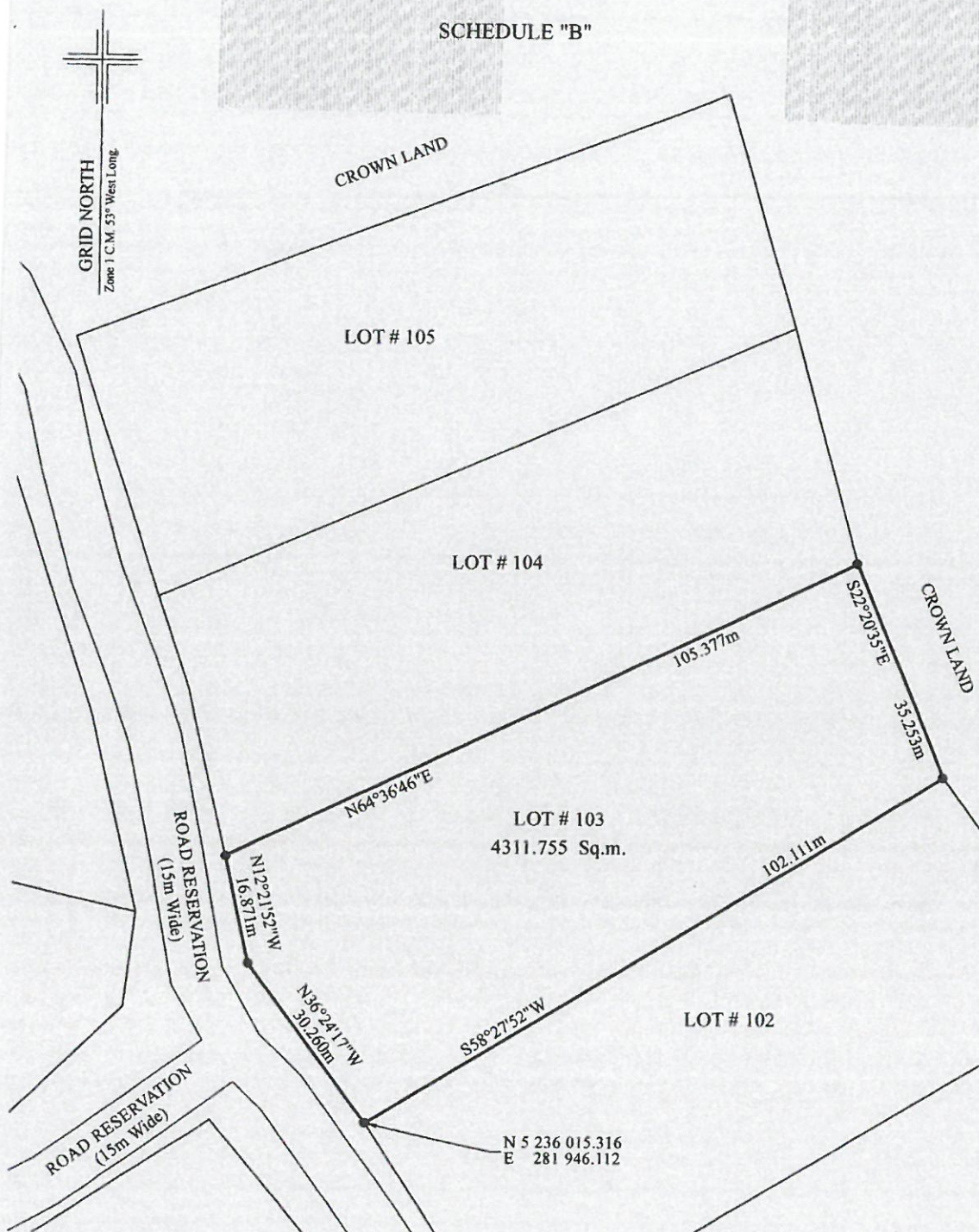
The above described piece or parcel of land contains an area of 4311.755 square metres, more or less, and is more particularly shown on the drawing hereto attached dated 18 10 2013.

This description and accompanying plan are integral parts necessary to adequately reflect the legal boundary of the subject property and therefor invalid if separated.



PROJECT# 005-13-E
DATED: 18 10 2013

SCHEDULE "B"



MONUMENTS USED: (NAD 83)

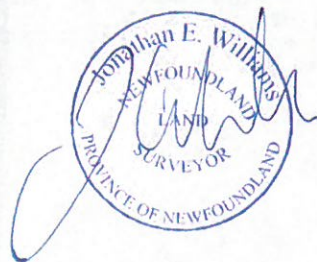
	NORTHING	EASTING
91008	5 235 159.049	282 467.294
83G3458	5 236 107.125	283 279.200

LEGEND:

- A. = anchor
- = placed iron pin
- o.h.w. = overhead wire
- P. = pole
- f.h. = fire hydrant

NOTE: ALL DISTANCES ARE HORIZONTAL GROUND

DATE: October 18th, 2013
PROJECT NO. 005-13-E



— SCALE : 1:750 —

SCHEDULE "A"

Lot # 104, Salmonier Cottage Lots, Newfoundland and Labrador, Canada

BEGINNING at a point, said point having the following NAD83 coordinates in Zone 1, central meridian 53° west longitude, of the Transverse Mercator Projection as modified for the Province of Newfoundland and Labrador

N 5 236 095.744
E 281 914.086

with reference to Monument number 91008 with Co-ordinates N 5 235 159.049 metres and E 282 467.294 metres and Monument number 83G3458 with Co-ordinates N 5 236 107.125 metres and E 283 279.200 metres;

THENCE running along Lot # 105 north sixty-six degrees thirty-six minutes zero eight seconds east (N66°36'08"E) for a distance of one hundred four decimal two zero nine (104.209) metres;

THENCE turning and running along Crown Land south fifteen degrees thirty-seven minutes fifty-three seconds east (S15°37'53"E) for a distance of thirty-seven decimal one seven two (37.172) metres;

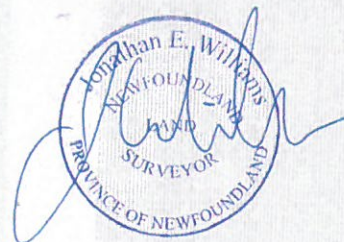
THENCE turning and running along Lot # 103 south sixty-four degrees thirty-six minutes forty-six seconds west (S64°36'46"W) for a distance of one hundred five decimal three seven seven (105.377) metres;

THENCE turning and running along the northeastern limit of a fifteen (15) metre road reservation north twelve degrees fifty-one minutes thirty-nine seconds west (N12°51'39"W) for a distance of twenty-six decimal zero five one (26.051) metres; **thence** north eighteen degrees zero nine minutes thirty-six seconds west (N18°09'36"W) for a distance of fourteen decimal nine four zero (14.940) metres, more or less, to the **Point of Beginning**.

All bearings are Grid North NAD83 in Zone 1 of the Transverse Mercator Projection as modified for the Province of Newfoundland;

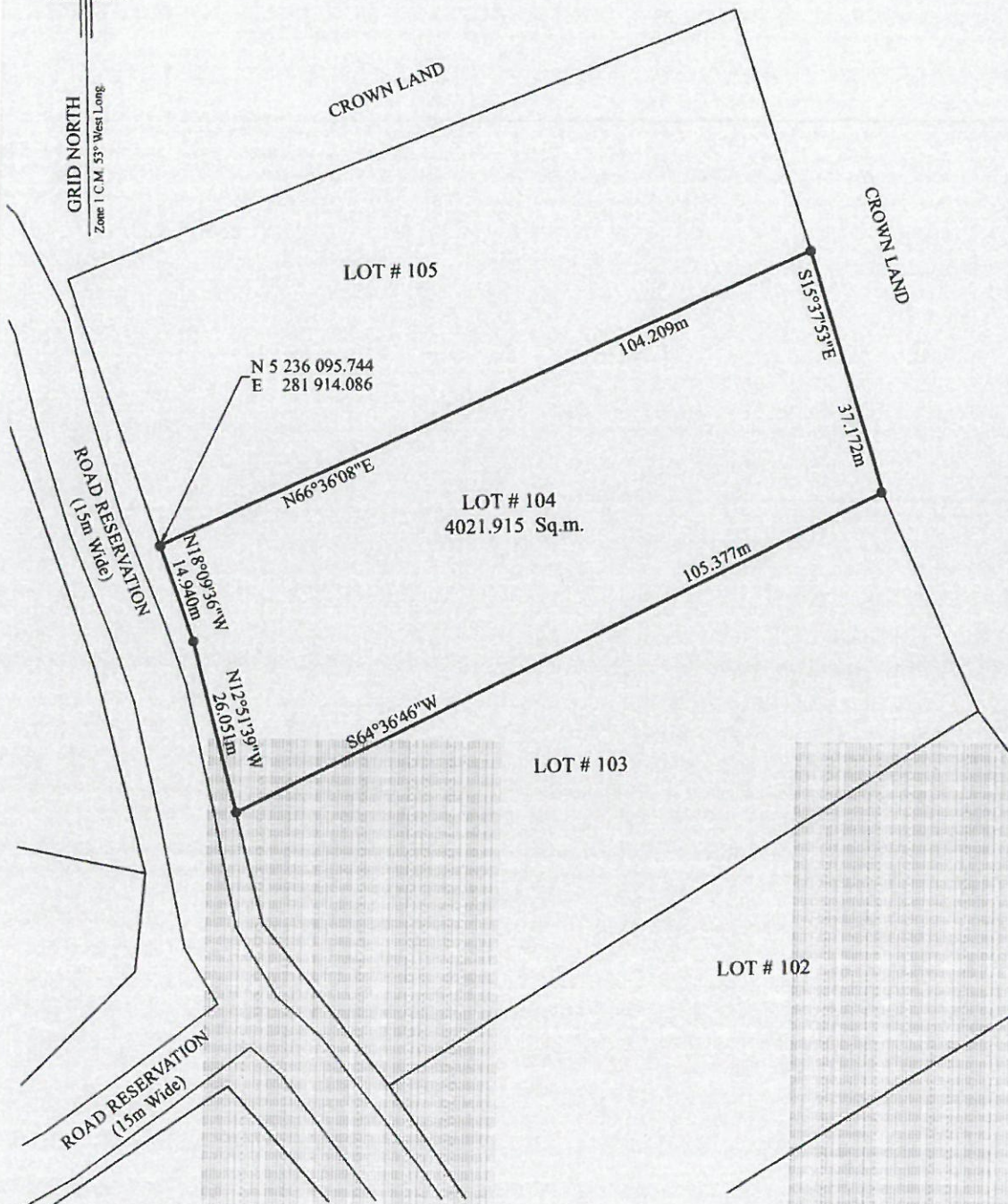
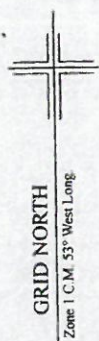
The above described piece or parcel of land contains an area of 4021.915 square metres, more or less, and is more particularly shown on the drawing hereto attached dated 18 10 2013.

This description and accompanying plan are integral parts necessary to adequately reflect the legal boundary of the subject property and therefor invalid if separated.



PROJECT# 005-13-E
DATED: 18 10 2013

SCHEDULE "B"



MONUMENTS USED:(NAD 83)

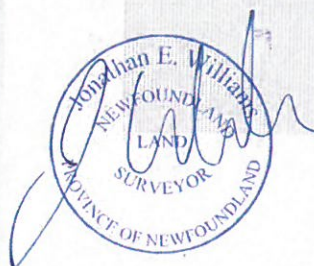
	NORTHING	EASTING
91008	5 235 159.049	282 467.294
83G3458	5 236 107.125	283 279.200

LEGEND:

- A. = anchor
- = placed iron pin
- o.h.w. = overhead wire
- P. = pole
- f.h. = fire hydrant

NOTE: ALL DISTANCES ARE
HORIZONTAL GROUND

DATE: October 18th, 2013
PROJECT NO: 005-13-E



—SCALE : 1:750 —

SCHEDULE "A"

Lot # 105, Salmonier Cottage Lots, Newfoundland and Labrador, Canada

BEGINNING at a point, said point having the following NAD83 coordinates in Zone 1, central meridian 53° west longitude, of the Transverse Mercator Projection as modified for the Province of Newfoundland and Labrador

N 5 236 095.744
E 281 914.086

with reference to Monument number 91008 with Co-ordinates N 5 235 159.049 metres and E 282 467.294 metres and Monument number 83G3458 with Co-ordinates N 5 236 107.125 metres and E 283 279.200 metres;

THENCE running along the northeastern limit of a fifteen (15) metre road reservation north eighteen degrees zero nine minutes thirty-six seconds west (N18°09'36"W) for a distance of forty-one decimal four six eight (41.468) metres;

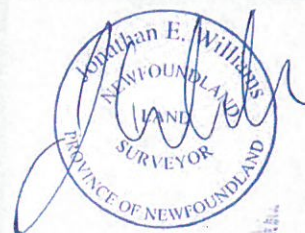
THENCE turning and running along Crown Land north sixty-nine degrees zero three minutes fifty-seven seconds east (N69°03'57"E) for a distance of one hundred four decimal nine four zero (104.940) metres; **thence** south sixteen degrees thirty-two minutes forty-eight seconds east (S16°32'48"E) for a distance of thirty-seven decimal zero four eight (37.048) metres;

THENCE turning and running along Lot # 104 south sixty-six degrees thirty-six minutes zero eight seconds west (S66°36'08"W) for a distance of one hundred four decimal two zero nine (104.209) metres, to the **Point of Beginning**.

All bearings are Grid North NAD83 in Zone 1 of the Transverse Mercator Projection as modified for the Province of Newfoundland;

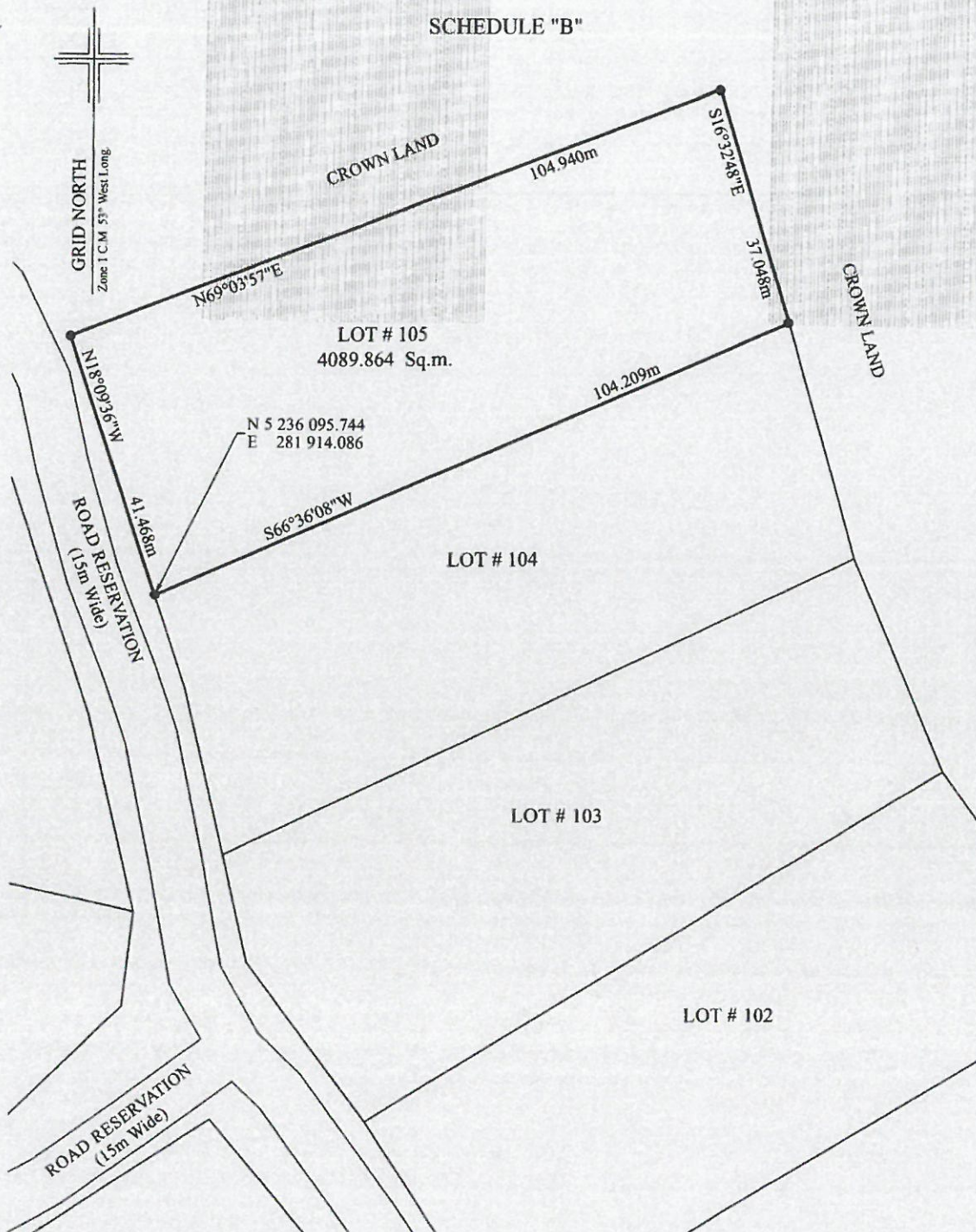
The above described piece or parcel of land contains an area of 4089.864 square metres, more or less, and is more particularly shown on the drawing hereto attached dated 18 10 2013.

This description and accompanying plan are integral parts necessary to adequately reflect the legal boundary of the subject property and therefor invalid if separated.



PROJECT# 005-13-E
DATED: 18 10 2013

SCHEDULE "B"



MONUMENTS USED:(NAD 83)

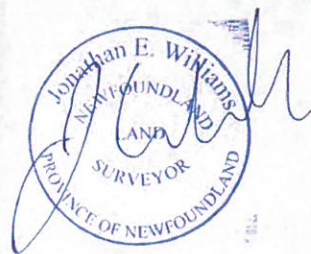
	NORTHING	EASTING
91008	5 235 159.049	282 467.294
83G3458	5 236 107.125	283 279.200

LEGEND:

- A. = anchor
- = placed iron pin
- o.h.w. = overhead wire
- P. = pole
- f.h. = fire hydrant

NOTE: ALL DISTANCES ARE
HORIZONTAL GROUND

DATE: October 18th, 2013
PROJECT NO: 005-13-E



SCALE: 1:750

SCHEDULE "A"

Lot # 106, Salmonier Cottage Lots, Newfoundland and Labrador, Canada

BEGINNING at a point, said point having the following NAD83 coordinates in Zone 1, central meridian 53° west longitude, of the Transverse Mercator Projection as modified for the Province of Newfoundland and Labrador

N 5 236 267.186
E 281 804.429

with reference to Monument number 91008 with Co-ordinates N 5 235 159.049 metres and E 282 467.294 metres and Monument number 83G3458 with Co-ordinates N 5 236 107.125 metres and E 283 279.200 metres;

THENCE running along Lot # 107 north seventy-two degrees fifty-one minutes eleven seconds east (N72°51'11"E) for a distance of one hundred decimal zero zero zero (100.000) metres;

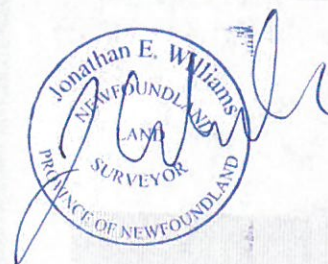
THENCE turning and running along Crown Land south eighteen degrees thirty minutes fifty-two seconds east (S18°30'52"E) for a distance of forty-seven decimal four two three (47.423) metres; **thence** south seventy-seven degrees thirteen minutes seventeen seconds west (S77°13'17"W) for a distance of ninety-eight decimal five nine five (98.595) metres;

THENCE running along the northeastern limit of a fifteen (15) metre road reservation north twenty-one degrees eleven minutes thirty-nine seconds west (N21°11'39"W) for a distance of forty decimal zero zero zero (40.000) metres, more or less, to the **Point of Beginning**.

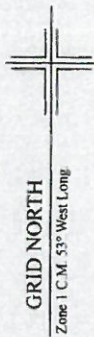
All bearings are Grid North NAD83 in Zone 1 of the Transverse Mercator Projection as modified for the Province of Newfoundland;

The above described piece or parcel of land contains an area of 4321.170 square metres, more or less, and is more particularly shown on the drawing hereto attached dated 18 10 2013.

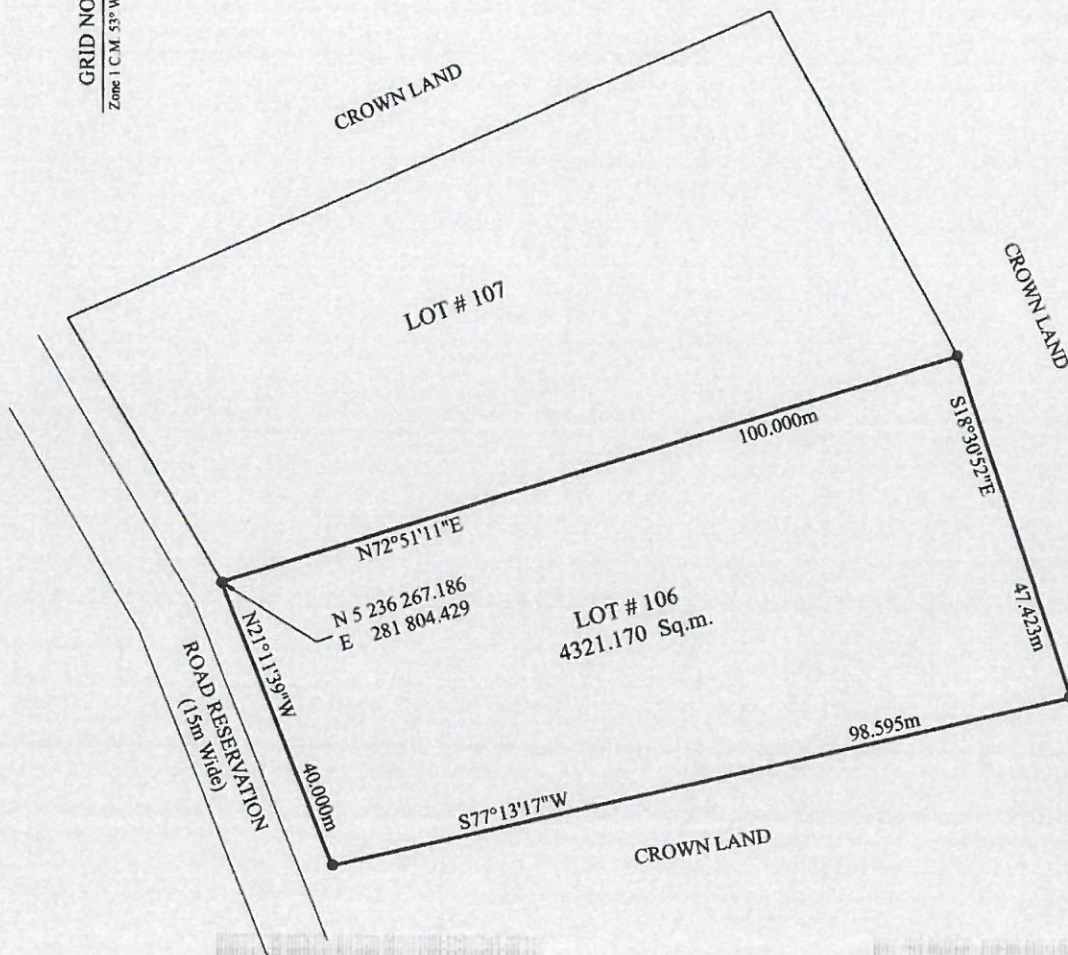
This description and accompanying plan are integral parts necessary to adequately reflect the legal boundary of the subject property and therefor invalid if separated.



PROJECT# 005-13-E
DATED: 18 10 2013



SCHEDULE "B"



MONUMENTS USED:(NAD 83)

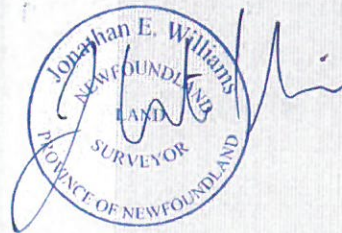
	NORTHING	EASTING
91008	5 235 159.049	282 467.294
83G3458	5 236 107.125	283 279.200

LEGEND:

- A. = anchor
- = placed iron pin
- o.h.w. = overhead wire
- P. = pole
- f.h. = fire hydrant

NOTE: ALL DISTANCES ARE
HORIZONTAL GROUND

DATE: October 18th, 2013
PROJECT NO: 005-13-E



SCALE : 1:750

SCHEDULE "A"

Lot # 107, Salmonier Cottage Lots, Newfoundland and Labrador, Canada

BEGINNING at a point, said point having the following NAD83 coordinates in Zone 1, central meridian 53° west longitude, of the Transverse Mercator Projection as modified for the Province of Newfoundland and Labrador

N 5 236 267.186
E 281 804.429

with reference to Monument number 91008 with Co-ordinates N 5 235 159.049 metres and E 282 467.294 metres and Monument number 83G3458 with Co-ordinates N 5 236 107.125 metres and E 283 279.200 metres;

THENCE running along the northeastern limit of a fifteen (15) metre road reservation north thirty degrees twelve minutes zero five seconds west (N30°12'05"W) for a distance of forty decimal zero zero zero (40.000) metres;

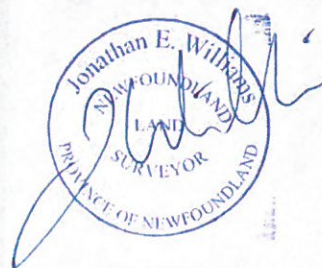
THENCE running along Crown Land north sixty-six degrees twelve minutes forty-seven seconds east (N66°12'47"E) for a distance ninety-nine decimal five four one (99.541) metres; **thence** south twenty-eight degrees thirty-one minutes forty-seven seconds east (S28°31'47"E) for a distance of fifty-one decimal four eight nine (51.489) metres;

THENCE turning and running along Lot # 106 south seventy-two degrees fifty-one minutes eleven seconds west (S72°51'11"W) for a distance of one hundred decimal zero zero zero (100.000) metres, more or less, to the **Point of Beginning**.

All bearings are Grid North NAD83 in Zone 1 of the Transverse Mercator Projection as modified for the Province of Newfoundland;

The above described piece or parcel of land contains an area of 4502.149 square metres, more or less, and is more particularly shown on the drawing hereto attached dated 18 10 2013.

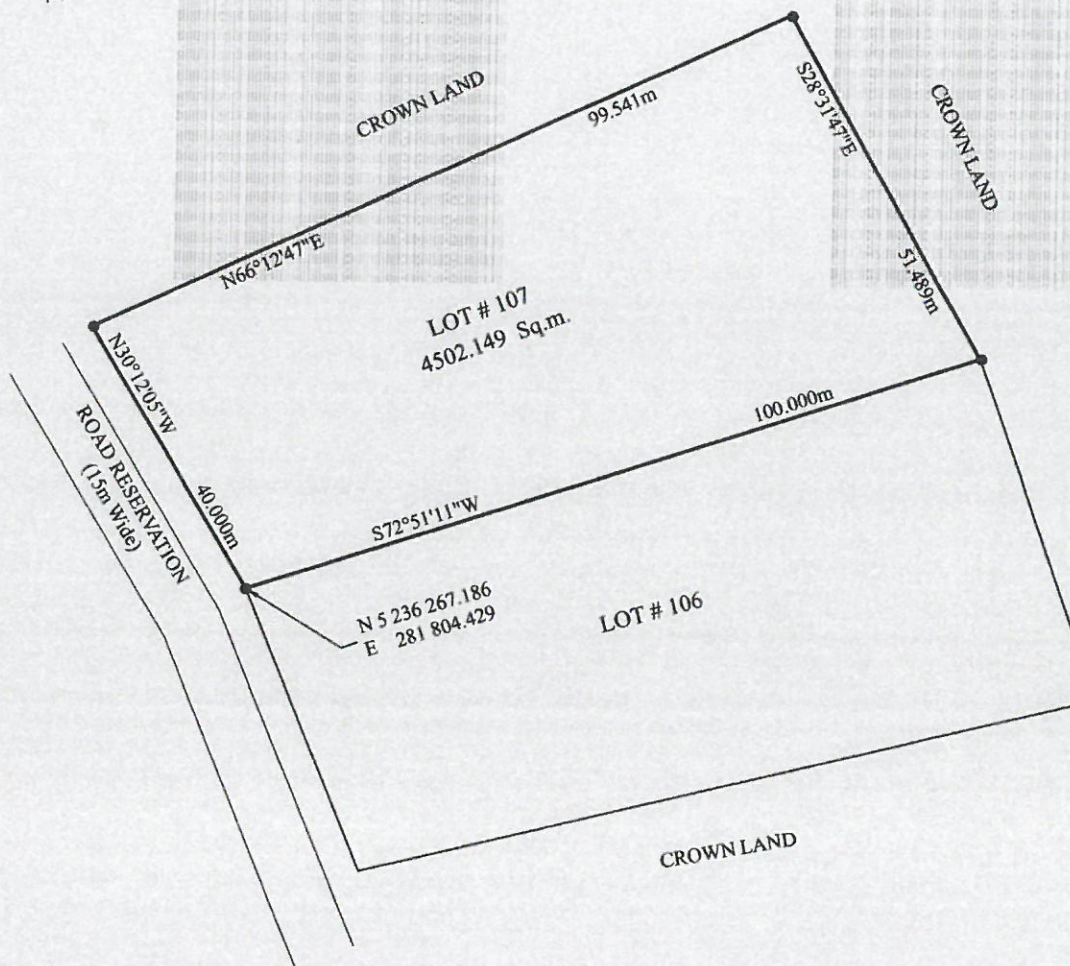
This description and accompanying plan are integral parts necessary to adequately reflect the legal boundary of the subject property and therefor invalid if separated.



PROJECT# 005-13-E
DATED: 18 10 2013



SCHEDULE "B"



MONUMENTS USED:(NAD 83)

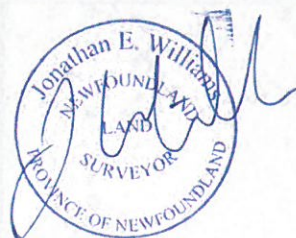
	NORTHING	EASTING
91008	5 235 159.049	282 467.294
83G3458	5 236 107.125	283 279.200

LEGEND:

- A. = anchor
- = placed iron pin
- o.h.w. = overhead wire
- P. = pole
- f.h. = fire hydrant

NOTE: ALL DISTANCES ARE
HORIZONTAL GROUND

DATE: October 18th, 2013
PROJECT NO: 005-13-E



—SCALE : 1:750 —

SCHEDULE "A"

Lot # 112, Salmonier Cottage Lots, Newfoundland and Labrador, Canada

BEGINNING at a point, said point having the following NAD83 coordinates in Zone 1, central meridian 53° west longitude, of the Transverse Mercator Projection as modified for the Province of Newfoundland and Labrador

N 5 235 992.698
E 281 887.225

with reference to Monument number 91008 with Co-ordinates N 5 235 159.049 metres and E 282 467.294 metres and Monument number 83G3458 with Co-ordinates N 5 236 107.125 metres and E 283 279.200 metres;

THENCE running along Lot # 111 south thirty-five degrees zero one minute fifty seconds east (S35°01'50"E) for a distance of ninety-two decimal four eight nine (92.489) metres;

THENCE turning and running along Lot # 99 south sixty-two degrees fifty-six minutes zero zero seconds west (S62°56'00"W) for a distance of forty-nine decimal nine zero seven (49.907) metres;

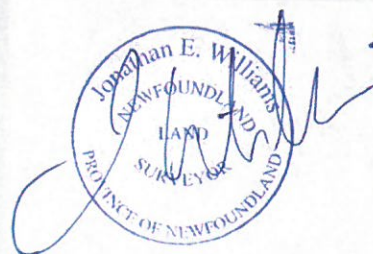
THENCE turning and running along Lot # 113 north twenty-nine degrees nineteen minutes eleven seconds west (N29°19'11"W) for a distance of ninety-nine decimal zero two zero (99.020) metres;

THENCE turning and running along the southeastern limit of a fifteen (15) metre road reservation north seventy-six degrees fifty minutes thirty-two seconds east (N76°50'32"E) for a distance of eighteen decimal two seven two (18.272) metres; **thence** north seventy degrees ten minutes twenty-seven seconds east (N70°10'27"E) for a distance of twenty-three decimal four three six (23.436) metres, more or less, to the **Point of Beginning**.

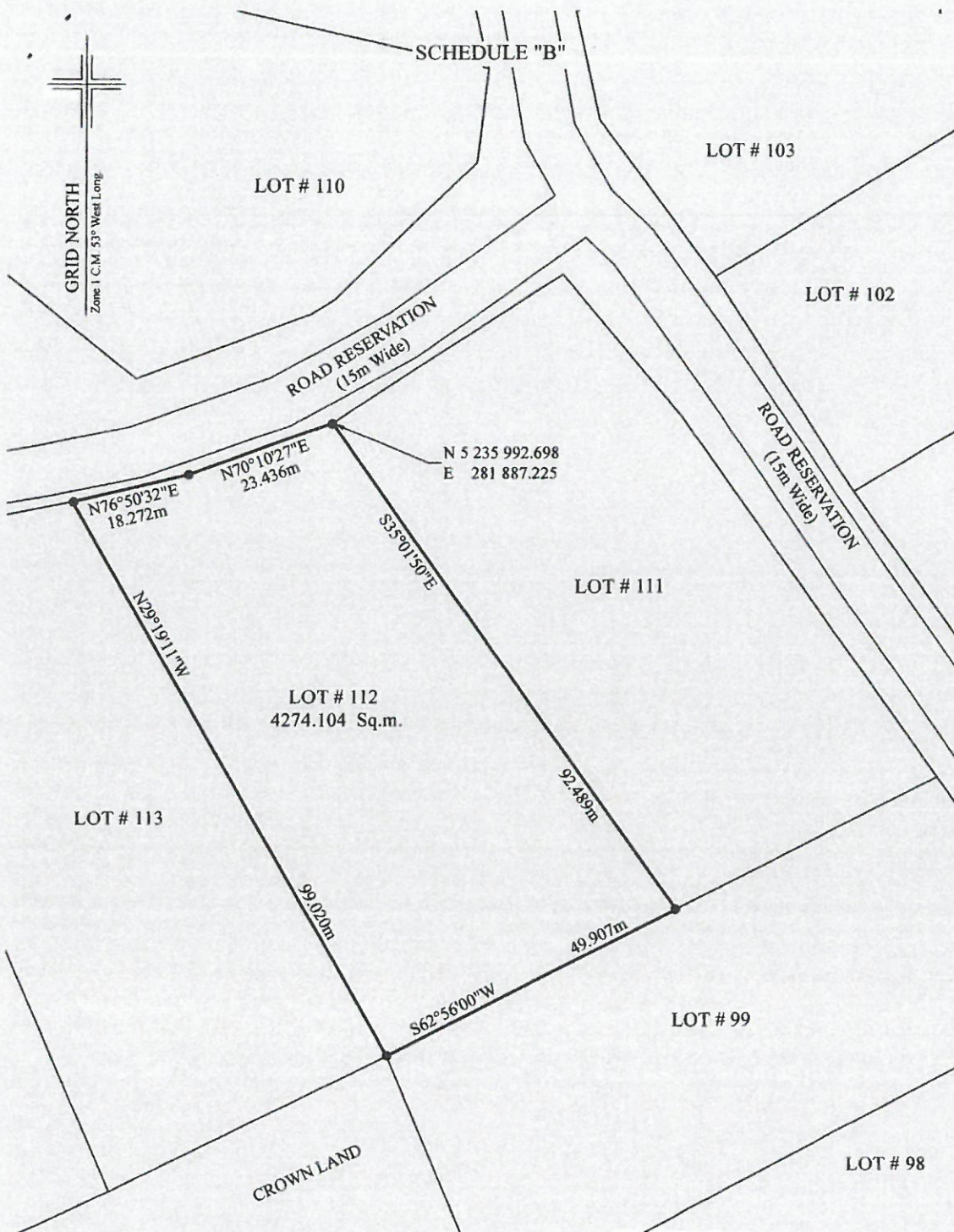
All bearings are Grid North NAD83 in Zone 1 of the Transverse Mercator Projection as modified for the Province of Newfoundland;

The above described piece or parcel of land contains an area of 4274.104 square metres, more or less, and is more particularly shown on the drawing hereto attached dated 18 10 2013.

This description and accompanying plan are integral parts necessary to adequately reflect the legal boundary of the subject property and therefor invalid if separated.



PROJECT# 005-13-E
DATED: 18 10 2013



MONUMENTS USED:(NAD 83)

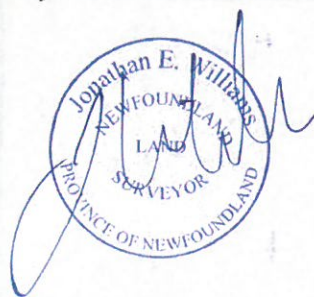
	NORTHING	EASTING
91008	5 235 159.049	282 467.294
83G3458	5 236 107.125	283 279.200

LEGEND:

- A. = anchor
- = placed iron pin
- o.h.w. = overhead wire
- P. = pole
- f.h. = fire hydrant

**NOTE: ALL DISTANCES ARE
HORIZONTAL GROUND**

DATE: October 18th, 2013
PROJECT NO: 005-13-E



SCALE: 1:750

SCHEDULE "A"

Lot # 113, Salmonier Cottage Lots, Newfoundland and Labrador, Canada

BEGINNING at a point, said point having the following NAD83 coordinates in Zone 1, central meridian 53° west longitude, of the Transverse Mercator Projection as modified for the Province of Newfoundland and Labrador

N 5 235 973.433
E 281 810.710

with reference to Monument number 91008 with Co-ordinates N 5 235 159.049 metres and E 282 467.294 metres and Monument number 83G3458 with Co-ordinates N 5 236 107.125 metres and E 283 279.200 metres;

THENCE running along the southeastern limit of a fifteen (15) metre road reservation north seventy-eight degrees fifty-seven minutes twenty-five seconds east (N78°57'25"E) for a distance of thirty-seven decimal three six seven (37.367) metres;

THENCE turning and running along Lot # 112 south twenty-nine degrees nineteen minutes eleven seconds east (S29°19'11"E) for a distance of ninety-nine decimal zero two zero (99.020) metres;

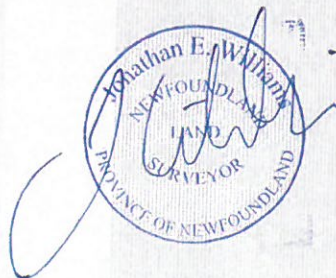
THENCE turning and running along Crown Land south sixty-three degrees fifty-five minutes twenty-eight seconds west (S63°55'28"W) for a distance of forty-seven decimal five two zero (47.520) metres;

THENCE turning and running along Lot # 114 north twenty-three degrees zero zero minutes zero nine seconds west (N23°00'09"W) for a distance of one hundred eight decimal seven zero nine (108.709) metres, more or less, to the **Point of Beginning**.

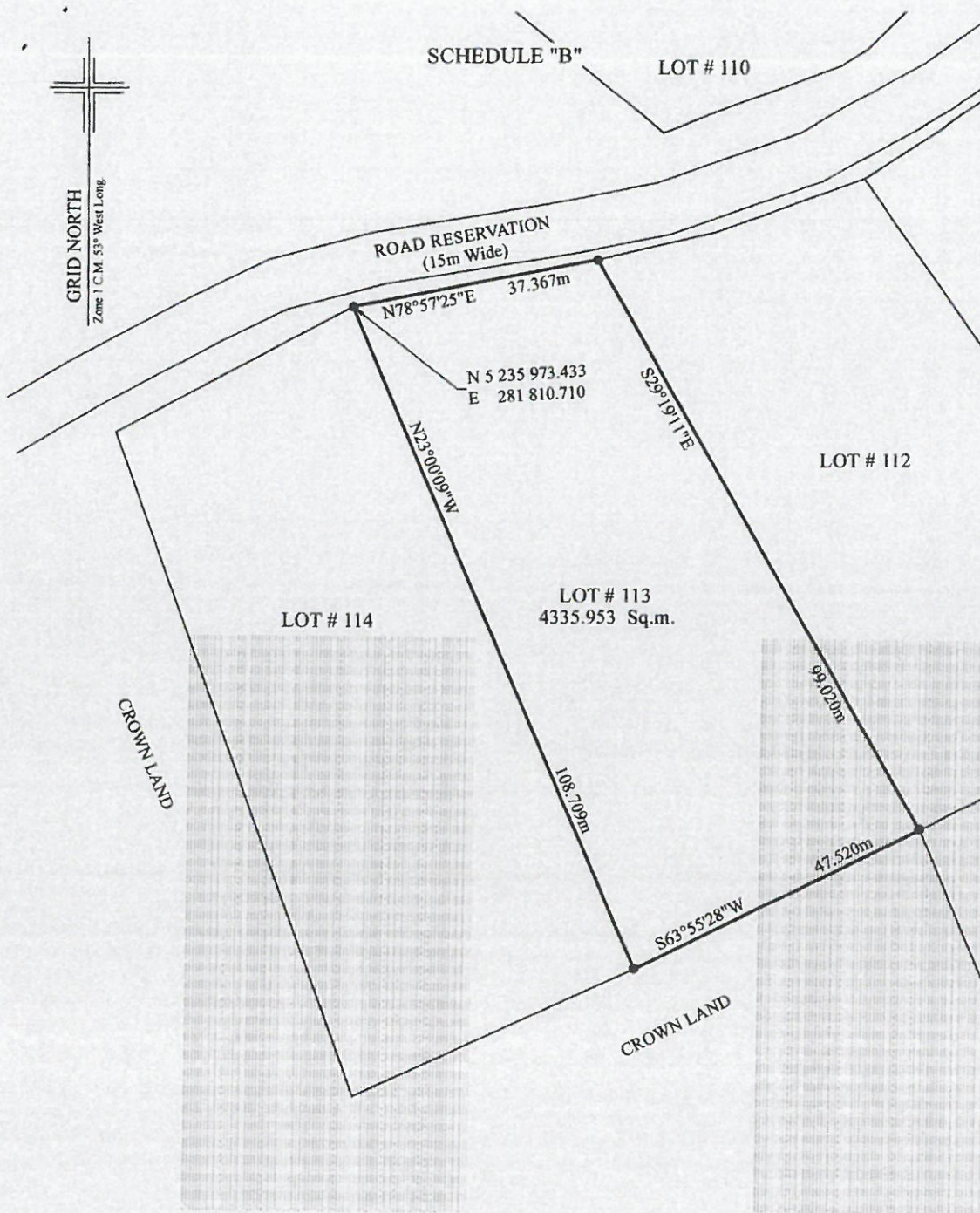
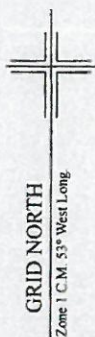
All bearings are Grid North NAD83 in Zone 1 of the Transverse Mercator Projection as modified for the Province of Newfoundland;

The above described piece or parcel of land contains an area of 4335.953 square metres, more or less, and is more particularly shown on the drawing hereto attached dated 18 10 2013.

This description and accompanying plan are integral parts necessary to adequately reflect the legal boundary of the subject property and therefor invalid if separated.



PROJECT# 005-13-E
DATED: 18 10 2013



MONUMENTS USED:(NAD 83)

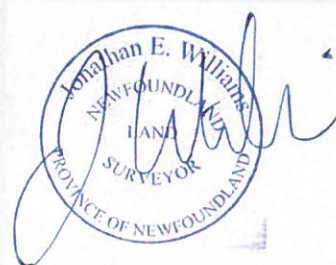
	NORTHING	EASTING
91008	5 235 159.049	282 467.294
83G3458	5 236 107.125	283 279.200

LEGEND:

- A. = anchor
- = placed iron pin
- o.h.w. = overhead wire
- P. = pole
- f.h. = fire hydrant

NOTE: ALL DISTANCES ARE
HORIZONTAL GROUND

DATE: October 18th, 2013
PROJECT NO: 005-13-E



—SCALE : 1:750—

SCHEDULE "A"

Lot # 119, Salmonier Cottage Lots, Newfoundland and Labrador, Canada

BEGINNING at a point, said point having the following NAD83 coordinates in Zone 1, central meridian 53° west longitude, of the Transverse Mercator Projection as modified for the Province of Newfoundland and Labrador

N 5 235 668.702
E 281 505.207

with reference to Monument number 91008 with Co-ordinates N 5 235 159.049 metres and E 282 467.294 metres and Monument number 83G3458 with Co-ordinates N 5 236 107.125 metres and E 283 279.200 metres;

THENCE running along the eastern limit of a fifteen (15) metre road reservation north thirty degrees zero zero minutes fifty-five seconds west (N30°00'55"W) for a distance of thirty-five decimal five two three (35.523) metres; **thence** north twelve degrees forty-four minutes zero nine seconds west (N12°44'09"W) for a distance of twenty-five decimal four one three (25.413) metres;

THENCE turning and running along Lot # 118 south eighty-three degrees twenty-one minutes fifty-five seconds east (S83°21'55"E) for a distance of ninety-nine decimal seven five four (99.754) metres;

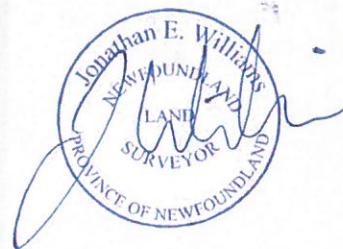
THENCE turning and running along the sinuosities of a fifteen (15) metre reservation for a pond south ten degrees twenty-nine minutes sixteen seconds east (S10°29'16"E) for a distance of twenty-nine decimal six two six (29.626) metres;

THENCE turning and running along Lot # 120 south seventy-nine degrees thirty-five minutes forty-nine seconds west (S79°35'49"W) for a distance of eighty-two decimal four six two (82.462) metres, more or less, to the **Point of Beginning**.

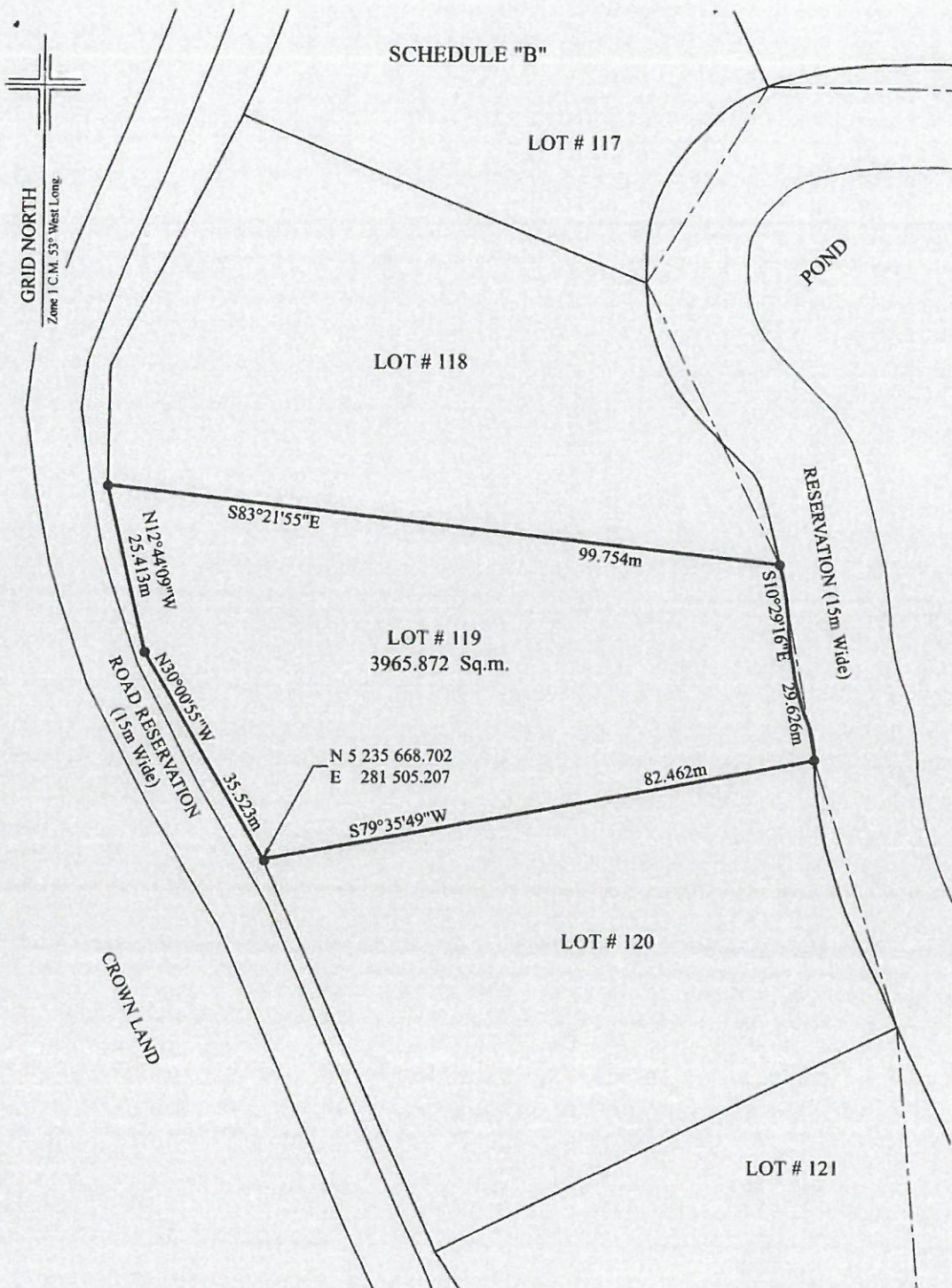
All bearings are Grid North NAD83 in Zone 1 of the Transverse Mercator Projection as modified for the Province of Newfoundland;

The above described piece or parcel of land contains an area of 3965.872 square metres, more or less, and is more particularly shown on the drawing hereto attached dated 18 10 2013.

This description and accompanying plan are integral parts necessary to adequately reflect the legal boundary of the subject property and therefor invalid if separated.



PROJECT# 005-13-E
DATED: 18 10 2013



MONUMENTS USED:(NAD 83)

	NORTHING	EASTING
91008	5 235 159.049	282 467.294
83G3458	5 236 107.125	283 279.200

LEGEND:

- A. = anchor
- = placed iron pin
- o.h.w. = overhead wire
- P. = pole
- f.h. = fire hydrant

**NOTE: ALL DISTANCES ARE
HORIZONTAL GROUND**

DATE: October 18th, 2013
PROJECT NO: 005-13-E



SCALE: 1:750

SCHEDULE "A"

Lot # 122, Salmonier Cottage Lots, Newfoundland and Labrador, Canada

BEGINNING at a point, said point having the following NAD83 coordinates in Zone 1, central meridian 53° west longitude, of the Transverse Mercator Projection as modified for the Province of Newfoundland and Labrador

N 5 235 516.387
E 281 575.617

with reference to Monument number 91008 with Co-ordinates N 5 235 159.049 metres and E 282 467.294 metres and Monument number 83G3458 with Co-ordinates N 5 236 107.125 metres and E 283 279.200 metres;

THENCE running along Lot # 123 south sixty degrees thirty-three minutes thirty-two seconds west (S60°33'32"W) for a distance of eighty-two decimal nine three two (82.932) metres;

THENCE turning and running along the sinuosities of a fifteen (15) metre reservation for a pond north forty-four degrees zero nine minutes forty-seven seconds west (N44°09'47"W) for a distance of thirty-seven decimal nine seven one (37.971) metres;

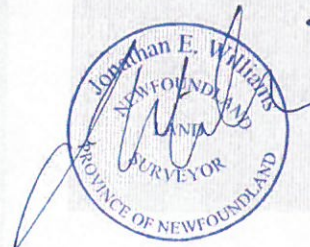
THENCE turning and running along Crown Land north forty-four degrees thirty-three minutes zero one second east (N44°33'01"E) for a distance of eighty-eight decimal one five three (88.153) metres;

THENCE turning and running along the southwestern limit of a fifteen (15) metre road reservation south thirty-six degrees forty-six minutes zero zero seconds east (S36°46'00"E) for a distance of sixty-one decimal five three eight (61.538) metres, more or less, to the **Point of Beginning**.

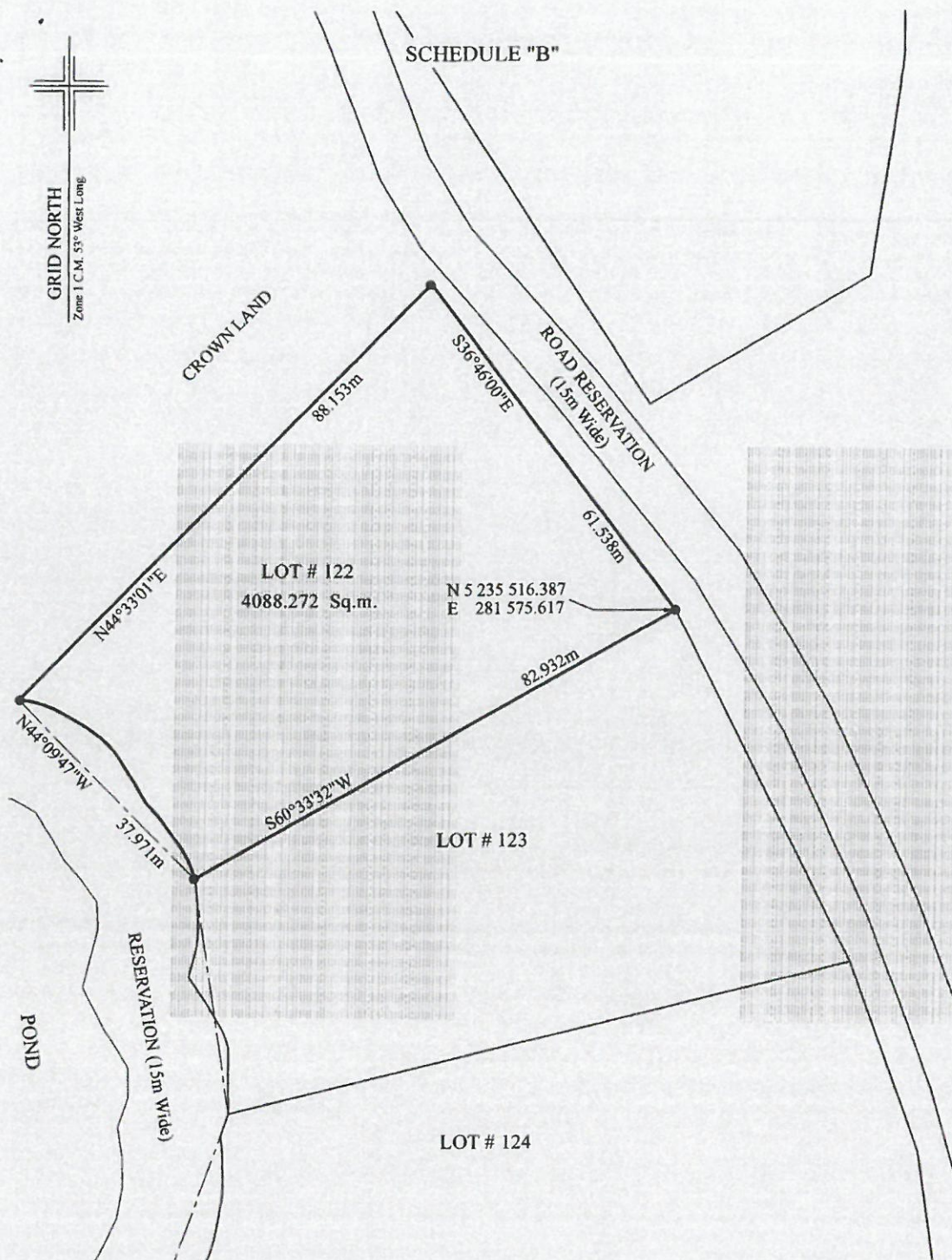
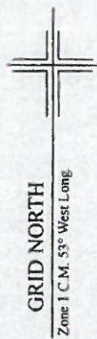
All bearings are Grid North NAD83 in Zone 1 of the Transverse Mercator Projection as modified for the Province of Newfoundland;

The above described piece or parcel of land contains an area of 4088.272 square metres, more or less, and is more particularly shown on the drawing hereto attached dated 18 10 2013.

This description and accompanying plan are integral parts necessary to adequately reflect the legal boundary of the subject property and therefor invalid if separated.



PROJECT# 005-13-E
DATED: 18 10 2013



MONUMENTS USED:(NAD 83)

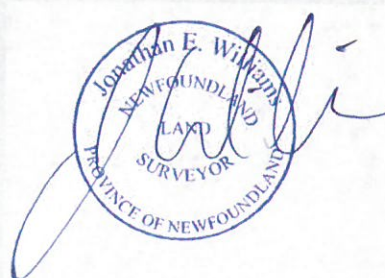
	NORTHING	EASTING
91008	5 235 159.049	282 467.294
83G3458	5 236 107.125	283 279.200

LEGEND:

- A. = anchor
- = placed iron pin
- o.h.w. = overhead wire
- P. = pole
- f.h. = fire hydrant

NOTE: ALL DISTANCES ARE
HORIZONTAL GROUND

DATE: October 18th, 2013
PROJECT NO: 005-13-E



SCALE : 1:750

SCHEDULE "A"

Lot # 123, Salmonier Cottage Lots, Newfoundland and Labrador, Canada

BEGINNING at a point, said point having the following NAD83 coordinates in Zone 1, central meridian 53° west longitude, of the Transverse Mercator Projection as modified for the Province of Newfoundland and Labrador

N 5 235 516.387
E 281 575.617

with reference to Monument number 91008 with Co-ordinates N 5 235 159.049 metres and E 282 467.294 metres and Monument number 83G3458 with Co-ordinates N 5 236 107.125 metres and E 283 279.200 metres;

THENCE running along the southwestern limit of a fifteen (15) metre road reservation south twenty-six degrees eleven minutes forty-one seconds east (S26°11'41"E) for a distance of fifty-nine decimal seven one three (59.713) metres;

THENCE turning and running along Lot # 124 south seventy-six degrees eleven minutes fifty-two seconds west (S76°11'52"W) for a distance of ninety-six decimal one eight one (96.181) metres;

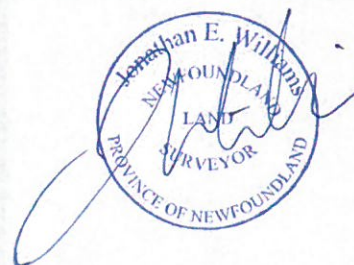
THENCE turning and running along a fifteen (15) metre reservation for a pond north eight degrees fourteen minutes fifteen seconds west (N8°14'15"W) for a distance of thirty-six decimal one three six (36.136) metres;

THENCE turning and running along Lot # 122 north sixty degrees thirty-three minutes thirty-two seconds east (N60°33'32"E) for a distance of eighty-two decimal nine three two (82.932) metres, more or less, to the **Point of Beginning**.

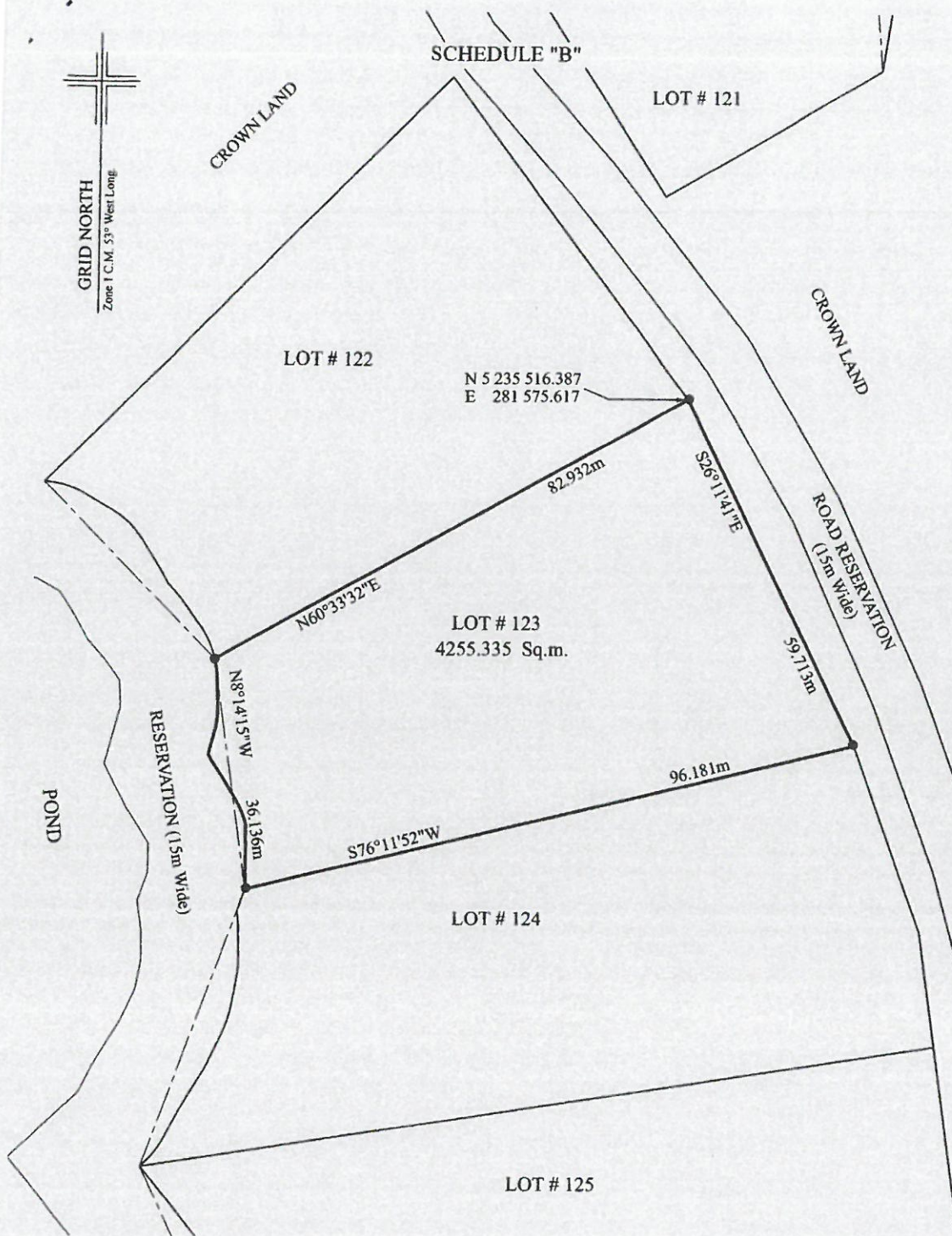
All bearings are Grid North NAD83 in Zone 1 of the Transverse Mercator Projection as modified for the Province of Newfoundland;

The above described piece or parcel of land contains an area of 4255.335 square metres, more or less, and is more particularly shown on the drawing hereto attached dated 18 10 2013.

This description and accompanying plan are integral parts necessary to adequately reflect the legal boundary of the subject property and therefor invalid if separated.



PROJECT# 005-13-E
DATED: 18 10 2013



MONUMENTS USED:(NAD 83)

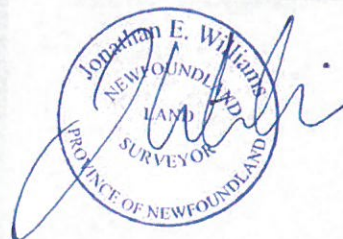
	NORTHING	EASTING
91008	5 235 159.049	282 467.294
83G3458	5 236 107.125	283 279.200

LEGEND:

- A. = anchor
- = placed iron pin
- o.h.w. = overhead wire
- P. = pole
- f.h. = fire hydrant

NOTE: ALL DISTANCES ARE
HORIZONTAL GROUND

DATE: October 18th, 2013
PROJECT NO: 005-13-E



—SCALE : 1:750 —

SCHEDULE "A"

Lot # 124, Salmonier Cottage Lots, Newfoundland and Labrador, Canada

BEGINNING at a point, said point having the following NAD83 coordinates in Zone 1, central meridian 53° west longitude, of the Transverse Mercator Projection as modified for the Province of Newfoundland and Labrador

N 5 235 415.963
E 281 614.783

with reference to Monument number 91008 with Co-ordinates N 5 235 159.049 metres and E 282 467.294 metres and Monument number 83G3458 with Co-ordinates N 5 236 107.125 metres and E 283 279.200 metres;

THENCE running along Lot # 125 south eighty-one degrees zero one minute fifty-eight seconds west (S81°01'58"W) for a distance of one hundred twenty-three decimal three eight eight (123.388) metres;

THENCE turning and running along the sinuosities of a fifteen (15) metre reservation for a pond north nineteen degrees fifty-seven minutes fifty-seven seconds east (N19°57'57"E) for a distance of forty-five decimal eight eight nine (45.889) metres;

THENCE turning and running along Lot # 123 north seventy-six degrees eleven minutes fifty-two seconds east (N76°11'52"E) for a distance of ninety-six decimal one eight one (96.181) metres;

THENCE turning and running along the southwestern limit of a fifteen (15) metre road reservation south nineteen degrees thirty-five minutes forty-five seconds east (S19°35'45"E) for a distance of thirty decimal seven nine one (30.791) metres; **thence** south seven degrees fifty-five minutes zero four seconds east (S7°55'04"E) for a distance of eighteen decimal zero zero eight (18.008) metres, more or less, to the **Point of Beginning**.

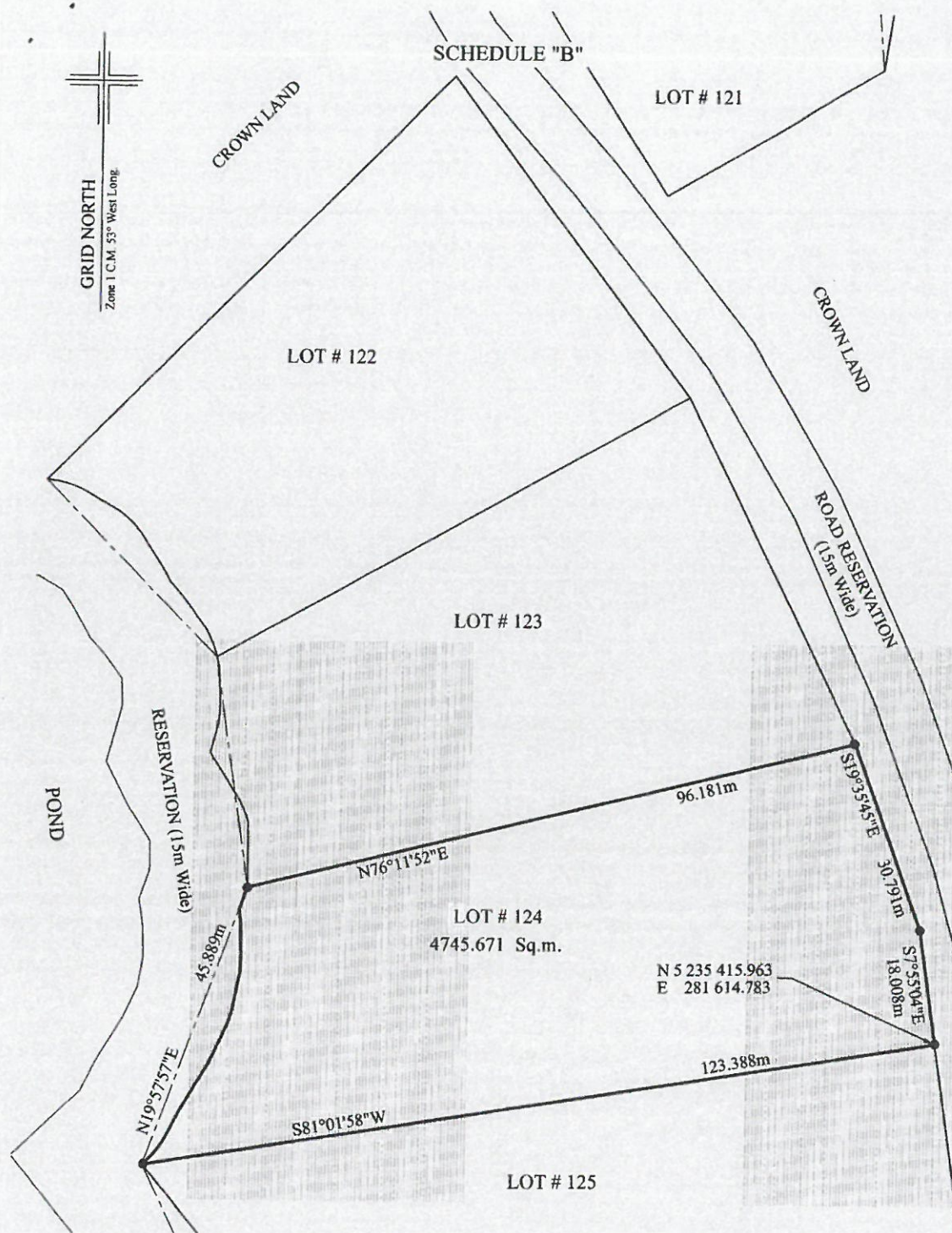
All bearings are Grid North NAD83 in Zone 1 of the Transverse Mercator Projection as modified for the Province of Newfoundland;

The above described piece or parcel of land contains an area of 4745.671 square metres, more or less, and is more particularly shown on the drawing hereto attached dated 18 10 2013.

This description and accompanying plan are integral parts necessary to adequately reflect the legal boundary of the subject property and therefor invalid if separated.



PROJECT# 005-13-E
DATED: 18 10 2013



MONUMENTS USED:(NAD 83)

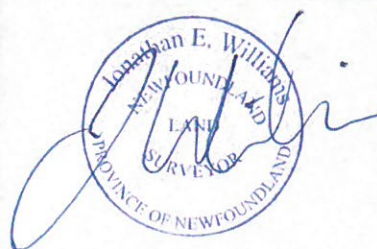
	NORTHING	EASTING
91008	5 235 159.049	282 467.294
83G3458	5 236 107.125	283 279.200

LEGEND:

- A. = anchor
- = placed iron pin
- o.h.w. = overhead wire
- P. = pole
- f.h. = fire hydrant

NOTE: ALL DISTANCES ARE
HORIZONTAL GROUND

DATE: October 18th, 2013
PROJECT NO: 005-13-E



—SCALE : 1:750—

SCHEDULE "A"

Lot # 127, Salmonier Cottage Lots, Newfoundland and Labrador, Canada

BEGINNING at a point, said point having the following NAD83 coordinates in Zone 1, central meridian 53° west longitude, of the Transverse Mercator Projection as modified for the Province of Newfoundland and Labrador

N 5 235 332.235
E 281 626.428

with reference to Monument number 91008 with Co-ordinates N 5 235 159.049 metres and E 282 467.294 metres and Monument number 83G3458 with Co-ordinates N 5 236 107.125 metres and E 283 279.200 metres;

THENCE running along the western limit of a fifteen (15) metre road reservation south seven degrees fifty-five minutes zero four seconds east (S7°55'04"E) for a distance of twenty decimal eight nine six (20.896) metres; **thence** south zero degrees forty-one minutes nineteen seconds west (S0°41'19"W) for a distance twenty-nine decimal two two three (29.223) metres;

THENCE turning and running along Lot # 128 south eighty-six degrees thirty minutes nineteen seconds west (S86°30'19"W) for a distance of eighty decimal nine two six (80.926) metres;

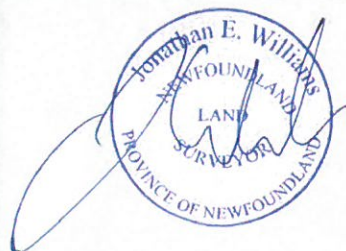
THENCE turning and running along the sinuosities of a fifteen (15) metre reservation for a pond north twenty-four degrees zero one minute fifty-eight seconds west (N24°01'58"W) for a distance of forty-nine decimal six zero zero (49.600) metres;

THENCE turning and running along Lot # 126 north eighty-four degrees twenty-seven minutes thirty-three seconds east (N84°27'33"E) for a distance of ninety-eight decimal nine one zero (98.910) metres, more or less, to the **Point of Beginning**.

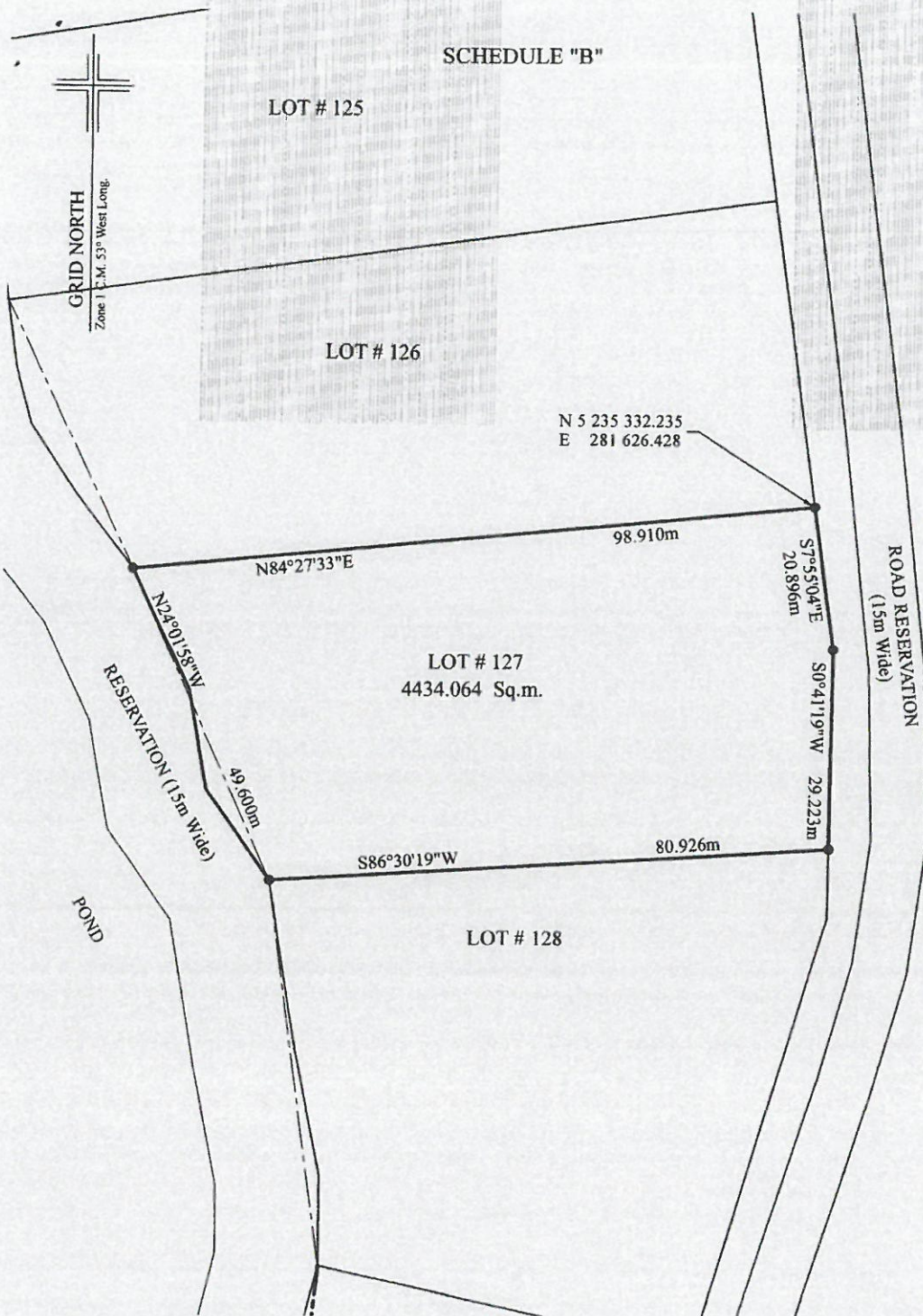
All bearings are Grid North NAD83 in Zone 1 of the Transverse Mercator Projection as modified for the Province of Newfoundland;

The above described piece or parcel of land contains an area of 4434.064 square metres, more or less, and is more particularly shown on the drawing hereto attached dated 18 10 2013.

This description and accompanying plan are integral parts necessary to adequately reflect the legal boundary of the subject property and therefor invalid if separated.



PROJECT# 005-13-E
DATED: 18 10 2013



MONUMENTS USED:(NAD 83)

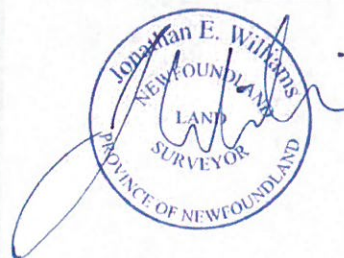
	NORTHING	EASTING
91008	5 235 159.049	282 467.294
83G3458	5 236 107.125	283 279.200

LEGEND:

- A. = anchor
- = placed iron pin
- o.h.w. = overhead wire
- P. = pole
- f.h. = fire hydrant

NOTE: ALL DISTANCES ARE
HORIZONTAL GROUND

DATE: October 18th, 2013
PROJECT NO: 005-13-E



SCALE : 1:750

SCHEDULE "A"

Lot # 131, Salmonier Cottage Lots, Newfoundland and Labrador, Canada

BEGINNING at a point, said point having the following NAD83 coordinates in Zone 1, central meridian 53° west longitude, of the Transverse Mercator Projection as modified for the Province of Newfoundland and Labrador

N 5 235 012.886
E 281 759.650

with reference to Monument number 91008 with Co-ordinates N 5 235 159.049 metres and E 282 467.294 metres and Monument number 83G3458 with Co-ordinates N 5 236 107.125 metres and E 283 279.200 metres;

THENCE running along the northwestern limit of a fifteen (15) metre road reservation south thirty-eight degrees zero three minutes forty-two seconds west (S38°03'42"W) for a distance of thirty-eight decimal two seven four (38.274) metres;

THENCE turning and running along Crown Land north forty-four degrees twenty three minutes thirty-one seconds west (N44°23'31"W) for a distance of one hundred twenty-six decimal seven seven three (126.773) metres;

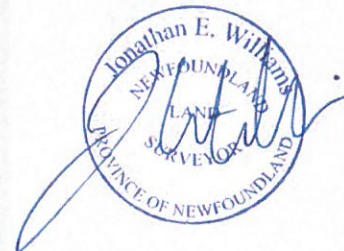
THENCE turning and running along the sinuosities of a fifteen (15) metre reservation for a pond north fifty-two degrees forty-seven minutes forty-one seconds east (N52°47'41"E) for a distance of thirty-nine decimal nine nine one (39.991) metres;

THENCE turning and running along Lot # 132 south forty-three degrees thirty-two minutes twenty-seven seconds east (S43°32'27"E) for a distance of one hundred sixteen decimal seven five six (116.756) metres, more or less, to the **Point of Beginning**.

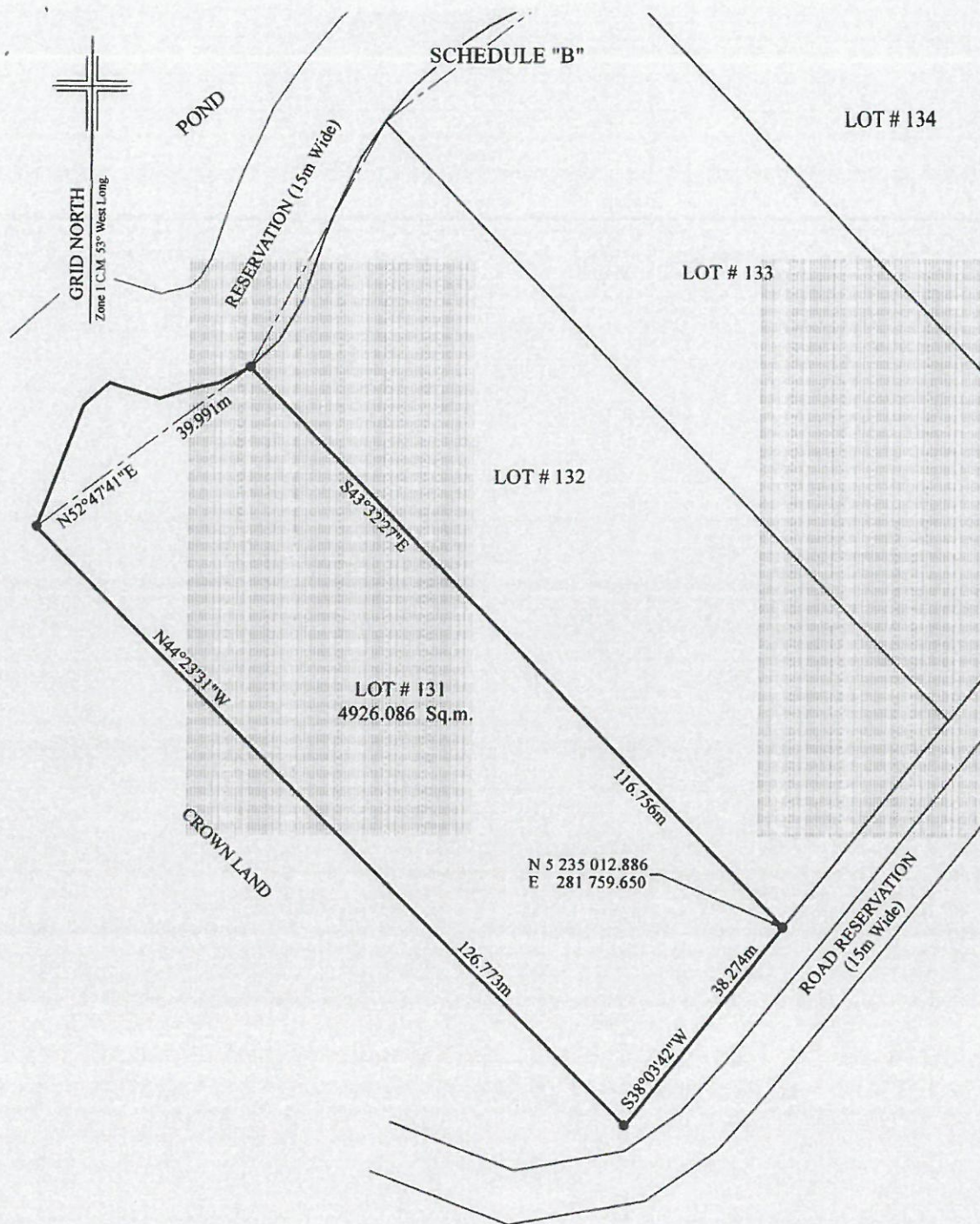
All bearings are Grid North NAD83 in Zone 1 of the Transverse Mercator Projection as modified for the Province of Newfoundland;

The above described piece or parcel of land contains an area of 4926.086 square metres, more or less, and is more particularly shown on the drawing hereto attached dated 18 10 2013.

This description and accompanying plan are integral parts necessary to adequately reflect the legal boundary of the subject property and therefor invalid if separated.



PROJECT# 005-13-E
DATED: 18 10 2013



MONUMENTS USED:(NAD 83)

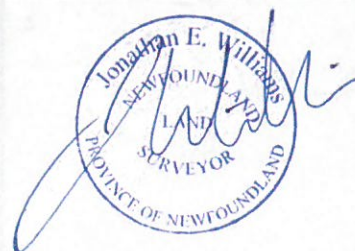
	NORTHING	EASTING
91008	5 235 159.049	282 467.294
83G3458	5 236 107.125	283 279.200

LEGEND:

A. = anchor
 ● = placed iron pin
 o.h.w. = overhead wire
 P. = pole
 f.h. = fire hydrant

NOTE: ALL DISTANCES ARE
 HORIZONTAL GROUND

DATE: October 18th, 2013
 PROJECT NO: 005-13-E



—SCALE : 1:750 —