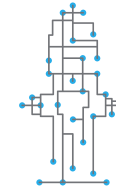


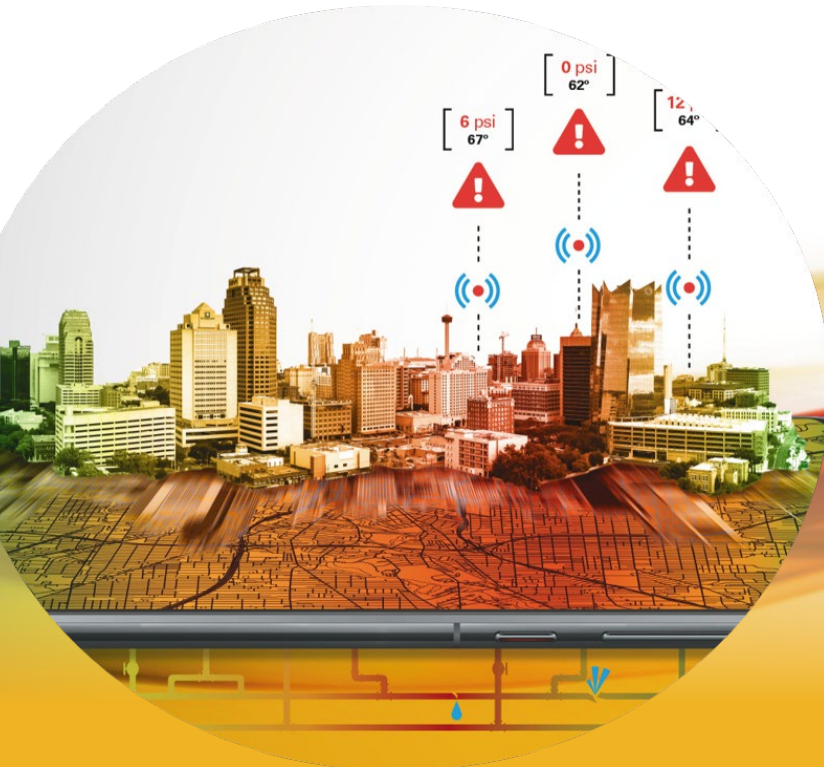


by **CLOW**
CLOW CANADA



POWERFUL ANALYTICS.
ACTIONABLE INSIGHTS.

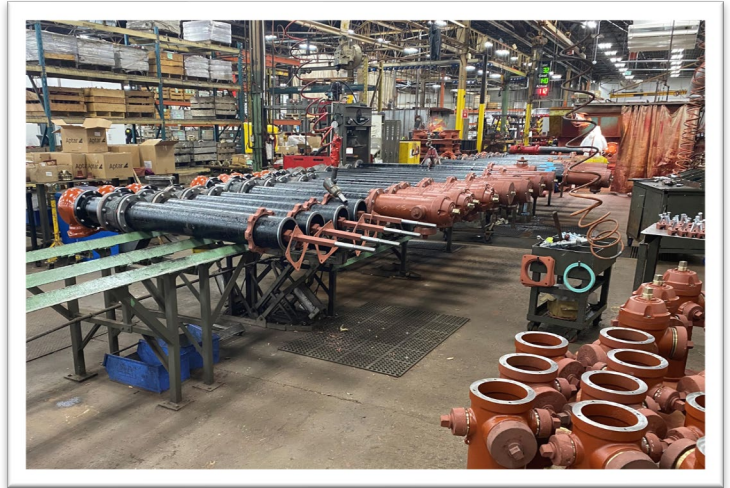
Smart Hydrants for a Smarter Future: Water Pressure Monitoring System



ABOUT US

1834

Thomas McAvity and Company:
Established May 19, 1834 in Saint John NB.



1903

First hydrant built.



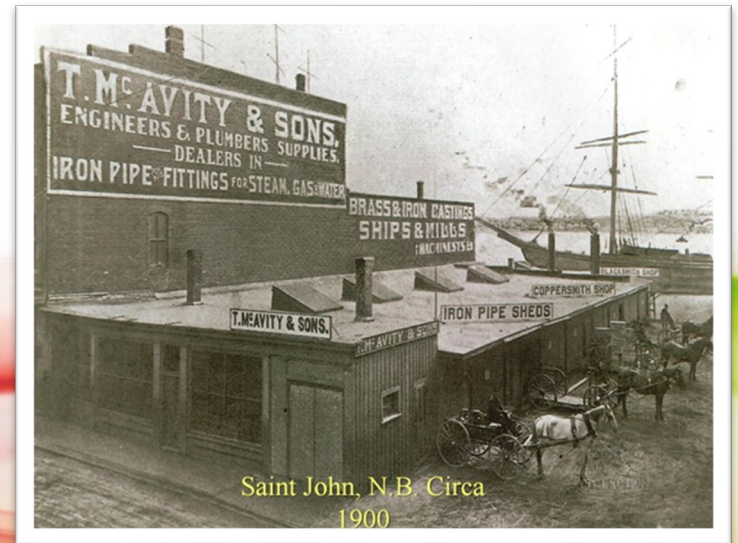
1990

McWane Family purchases McAvity and Concord
and establishing Clow Canada.



2012

Acquired Nighthawk Control (iHydrant™)
& entered Smart City technology



2021

iHydrant product line is launched in Canada (*Produced for Canada*), in Saint John, NB

Made in Canada Matters

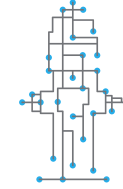
Your trusted provider of guaranteed Canadian-made waterworks products.

Clow Canada...The only Canadian National Fire Hydrant Manufacturer





Canadian Made For Canadian Climates!



POWERFUL ANALYTICS.
ACTIONABLE INSIGHTS.





POWERFUL ANALYTICS.
ACTIONABLE INSIGHTS.

iHydrant® - Mission

“Revolutionize water systems by leveraging powerful real time analytics and actionable insights to detect and prevent water loss and evolve the way your utility looks at water. “

[Innovative "Smart" Hydrants](#)



POWERFUL ANALYTICS.
ACTIONABLE INSIGHTS.

iHydrant®

**Pressure and Temperature Monitoring:
How Real Time Intelligence can Empower Data Driven Solutions**

M36

Water Audits and Loss Control Programs

Fourth Edition

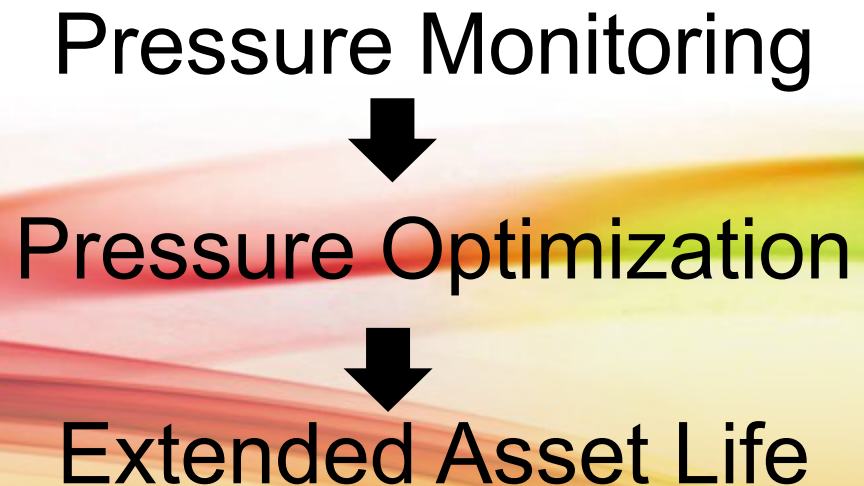


American Water Works
Association

By effectively managing and optimizing pressure in the water distribution system, water main and service connection leakage can be reduced, and pipeline asset life can be extended.



POWERFUL ANALYTICS.
ACTIONABLE INSIGHTS.



<https://www.awwa.org/Portals/0/files/publications/documents/M36LookInside.pdf>

Pressure Monitoring Blindspot Problem



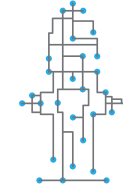
Pressure monitoring data has historically been limited to pump locations and water reservoirs exclusively, leaving a massive pressure measurement blindspot.

**“You can’t manage what
you can’t measure”**

Why Manage Pressure? Think ROI



- 🔊 Below 20 PSI requires a boil water advisory.
- 🔊 Less water loss
 - Faster damage repair
 - Detection of water theft or unauthorized use
 - Pressure management – leak index
- 🔊 Speed of intervention – less damage (day and night)
 - Less complaints from customers
- 🔊 Identify water hammer zones – prevent breakage
- 🔊 Better monitoring of your equipment (valves, pump, etc.)
 - Adjustment
 - Repair
 - Replacement



POWERFUL ANALYTICS.
ACTIONABLE INSIGHTS.

iHydrant[®] Solution

Real-time Intelligence. Insightful Analytics.

iHydrant® Solution to Blindspot Problem



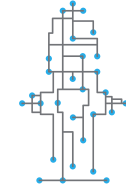
iHydrant™ sensors located in the hydrant boot are in constant contact with the water and Always On.

Data gathering in real time and continuously for Pressure and Temperature

Real Time Alerts (breakage, theft, abnormal use, etc.)

Measurement data is presented as visual graphics, alerts and reports

iHydrant[®] Solution to Blindspot Problem



POWERFUL ANALYTICS.
ACTIONABLE INSIGHTS.

Converting existing hydrant assets provide an economical remote monitoring solution.

Excavation not necessary with conversion kits.

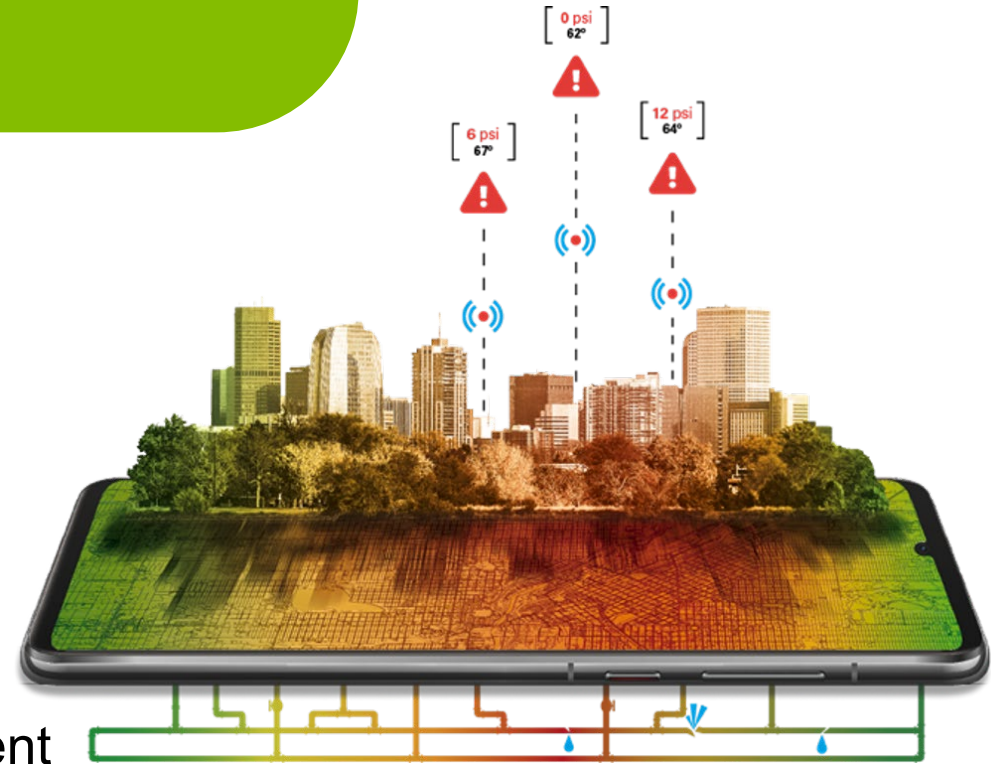
No electricity required.

A dual-purpose hydrant, fight fires AND acquires data providing vision throughout the network.

Improves overall system performance.

Deployment Strategies

- 1 iHydrant for 15 to 20 hydrants (depending on network)
- Areas with known issues
- Low traffic areas
- Near pumping stations, valve chambers, etc.
- Have municipality specs in new construction / development projects
- Dead ends





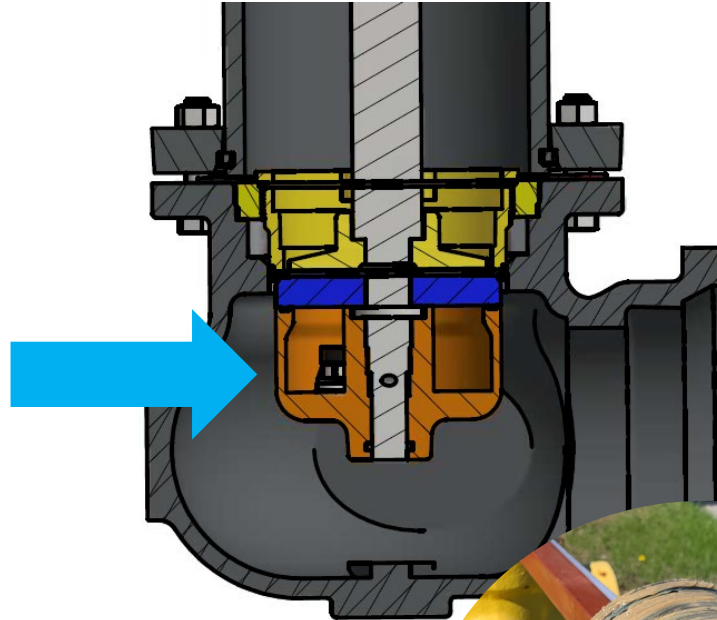
POWERFUL ANALYTICS.
ACTIONABLE INSIGHTS.

Mechanical Design

Real-time Intelligence. Insightful Analytics.

Patented OEM Sensors

- 📡 Located at the base
- 📡 Reading Network Data
- 📡 In real time – 24hr / 7days
- 📡 No Handling



Cast Iron Spool



Shroud with Electronics

📶 Data transmission via cellular network

LTE CAT 1 (Rogers)

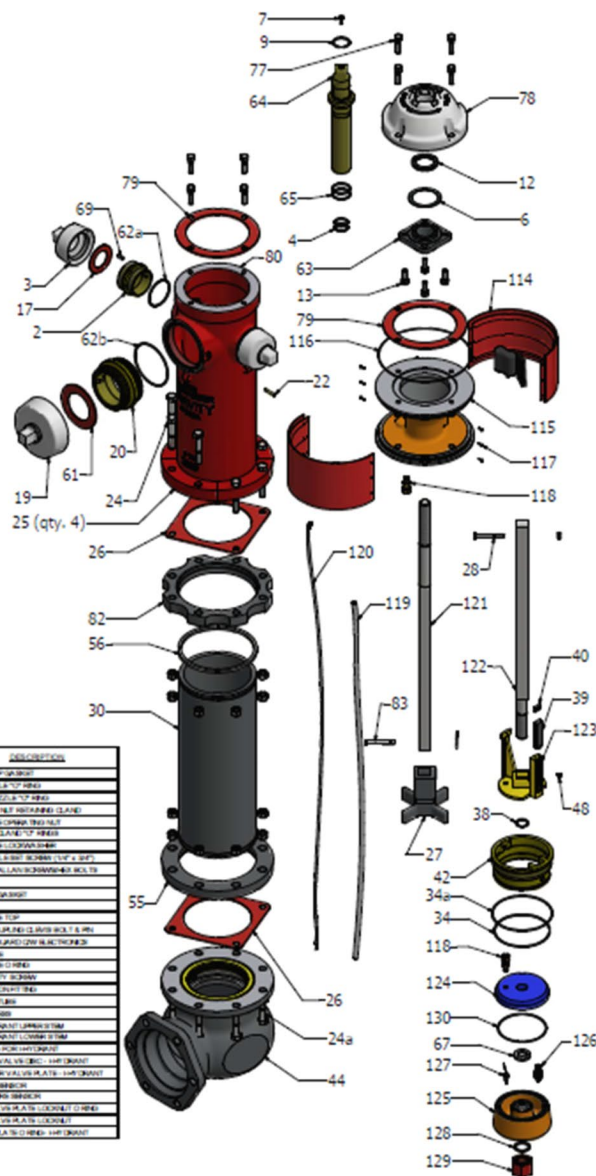
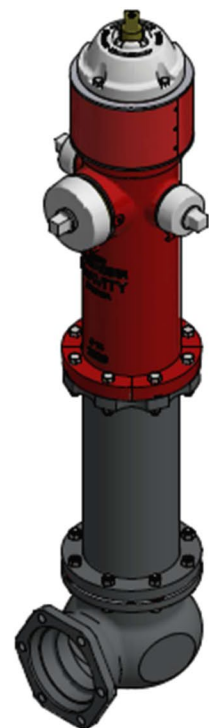
📶 Long-lasting battery

Lithium



CLOW
CLOW CANADA

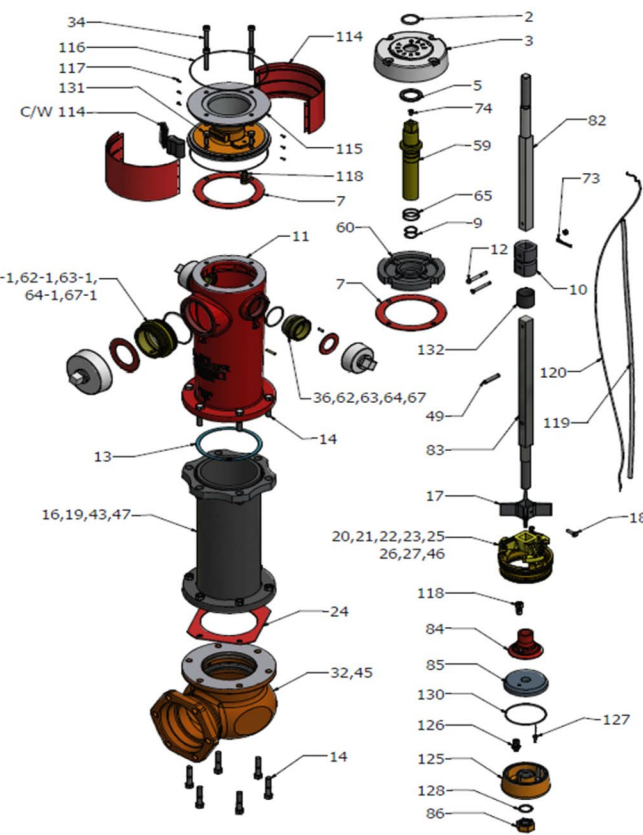
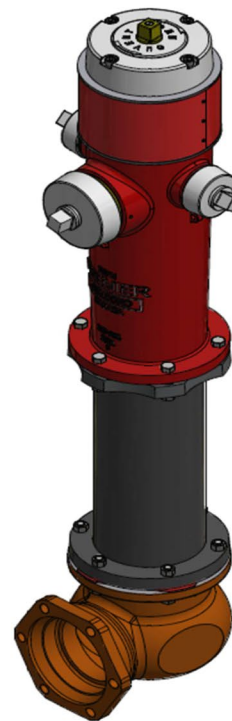
M67B BRIGADIER I-HYDRANT



REF.	DESCRIPTION	REF.	DESCRIPTION
1	MANIF. CAP-BOU	61	MANIF. CAP-BOU
2	MANIF. CAP-BOU	62	MANIF. CAP-BOU
3	MANIF. CAP-BOU	63	MANIF. CAP-BOU
4	MANIF. CAP-BOU	64	MANIF. CAP-BOU
5	MANIF. CAP-BOU	65	MANIF. CAP-BOU
6	MANIF. CAP-BOU	66	MANIF. CAP-BOU
7	MANIF. CAP-BOU	67	MANIF. CAP-BOU
8	MANIF. CAP-BOU	68	MANIF. CAP-BOU
9	MANIF. CAP-BOU	69	MANIF. CAP-BOU
10	MANIF. CAP-BOU	70	MANIF. CAP-BOU
11	MANIF. CAP-BOU	71	MANIF. CAP-BOU
12	MANIF. CAP-BOU	72	MANIF. CAP-BOU
13	MANIF. CAP-BOU	73	MANIF. CAP-BOU
14	MANIF. CAP-BOU	74	MANIF. CAP-BOU
15	MANIF. CAP-BOU	75	MANIF. CAP-BOU
16	MANIF. CAP-BOU	76	MANIF. CAP-BOU
17	MANIF. CAP-BOU	77	MANIF. CAP-BOU
18	MANIF. CAP-BOU	78	MANIF. CAP-BOU
19	MANIF. CAP-BOU	79	MANIF. CAP-BOU
20	MANIF. CAP-BOU	80	MANIF. CAP-BOU
21	MANIF. CAP-BOU	81	MANIF. CAP-BOU
22	MANIF. CAP-BOU	82	MANIF. CAP-BOU
23	MANIF. CAP-BOU	83	MANIF. CAP-BOU
24	MANIF. CAP-BOU	84	MANIF. CAP-BOU
25	MANIF. CAP-BOU	85	MANIF. CAP-BOU
26	MANIF. CAP-BOU	86	MANIF. CAP-BOU
27	MANIF. CAP-BOU	87	MANIF. CAP-BOU
28	MANIF. CAP-BOU	88	MANIF. CAP-BOU
29	MANIF. CAP-BOU	89	MANIF. CAP-BOU
30	MANIF. CAP-BOU	90	MANIF. CAP-BOU
31	MANIF. CAP-BOU	91	MANIF. CAP-BOU
32	MANIF. CAP-BOU	92	MANIF. CAP-BOU
33	MANIF. CAP-BOU	93	MANIF. CAP-BOU
34	MANIF. CAP-BOU	94	MANIF. CAP-BOU
35	MANIF. CAP-BOU	95	MANIF. CAP-BOU
36	MANIF. CAP-BOU	96	MANIF. CAP-BOU
37	MANIF. CAP-BOU	97	MANIF. CAP-BOU
38	MANIF. CAP-BOU	98	MANIF. CAP-BOU
39	MANIF. CAP-BOU	99	MANIF. CAP-BOU
40	MANIF. CAP-BOU	100	MANIF. CAP-BOU
41	MANIF. CAP-BOU	101	MANIF. CAP-BOU
42	MANIF. CAP-BOU	102	MANIF. CAP-BOU
43	MANIF. CAP-BOU	103	MANIF. CAP-BOU
44	MANIF. CAP-BOU	104	MANIF. CAP-BOU
45	MANIF. CAP-BOU	105	MANIF. CAP-BOU
46	MANIF. CAP-BOU	106	MANIF. CAP-BOU
47	MANIF. CAP-BOU	107	MANIF. CAP-BOU
48	MANIF. CAP-BOU	108	MANIF. CAP-BOU
49	MANIF. CAP-BOU	109	MANIF. CAP-BOU
50	MANIF. CAP-BOU	110	MANIF. CAP-BOU
51	MANIF. CAP-BOU	111	MANIF. CAP-BOU
52	MANIF. CAP-BOU	112	MANIF. CAP-BOU
53	MANIF. CAP-BOU	113	MANIF. CAP-BOU
54	MANIF. CAP-BOU	114	MANIF. CAP-BOU
55	MANIF. CAP-BOU	115	MANIF. CAP-BOU
56	MANIF. CAP-BOU	116	MANIF. CAP-BOU
57	MANIF. CAP-BOU	117	MANIF. CAP-BOU
58	MANIF. CAP-BOU	118	MANIF. CAP-BOU
59	MANIF. CAP-BOU	119	MANIF. CAP-BOU
60	MANIF. CAP-BOU	120	MANIF. CAP-BOU
61	MANIF. CAP-BOU	121	MANIF. CAP-BOU
62	MANIF. CAP-BOU	122	MANIF. CAP-BOU
63	MANIF. CAP-BOU	123	MANIF. CAP-BOU
64	MANIF. CAP-BOU	124	MANIF. CAP-BOU
65	MANIF. CAP-BOU	125	MANIF. CAP-BOU
66	MANIF. CAP-BOU	126	MANIF. CAP-BOU
67	MANIF. CAP-BOU	127	MANIF. CAP-BOU
68	MANIF. CAP-BOU	128	MANIF. CAP-BOU
69	MANIF. CAP-BOU	129	MANIF. CAP-BOU

CLOW
CLOW CANADA

D67M-P PREMIER iHYDRANT

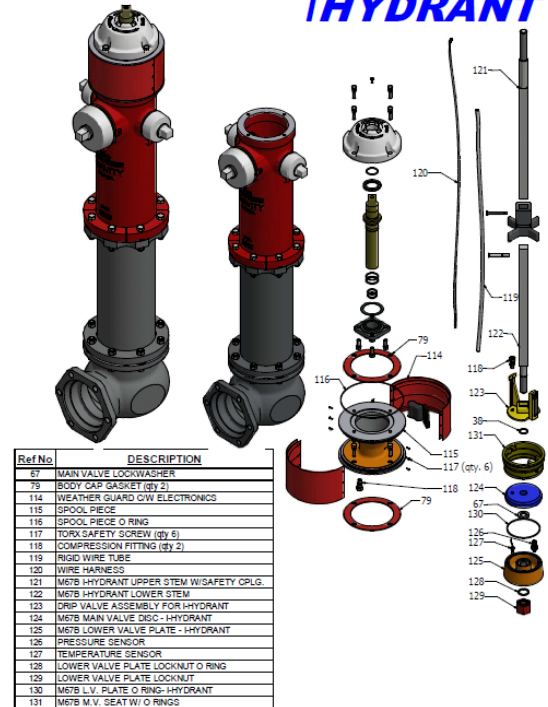


REF.	DESCRIPTION	REF.	DESCRIPTION	REF.	DESCRIPTION	REF.	DESCRIPTION
1	JOINT TORIQUE DU CHAPEAU	22	RIVET DU PURGEUR	59	ECROU DE MANOEUVRE HYDRAULIQUE	85	OPERCULE D67M-P I-HYDRANT
2	CHAPEAU	23	CAOUTCHOUC DU PURGEUR	60	COLLET DE RETENUE ECROU MANOEUVRE	86	ECROU BLOCAGE SUPPORT INF. D67M-P HYDRANT
3	TOURILLON EN DELRIN	24	GARNITURE DE LA BASE	61	BOUCHE 65MM	114	PROTECTEUR ETANCHE INCL. ELECTRONIQUE
4	GARNITURE DU CHAPEAU	25	JOINT TORIQUE SUP. DU SIEGE	62-1	PRISE DE POMPAGE	115	EXTENSION
5	JOINT TORIQUE INT. NOIX D'OP.	26	SIERGE DE LA VANNE (DRAINANT)	63	BOUCHON DE LA BOUCHE 65MM	116	JOINT TORIQUE DE L'EXTENSION
6	ACCROULEMENT DE SURETE	26A	SIERGE DE LA VANNE (NON DRAINANT)	63-1	BOUCHON DE LA PRISE DE POMPE	117	VIS DE SECURITE DE TYPE TORX
7	CORPS	27	JOINT TORIQUE INFERIEUR DU SIEGE	64	JOINT TORIQUE DE LA BOUCHE	118	RACCORD A COMPRESSION
8	BOULON & ECROU ACCOUP. 3/8" x 3"	32	BASE	64-1	JOINT TORIQUE DE LA PRISE DE POMPE	119	TUBE RIGIDE
9	GARNITURE DU CORPS	34	VIS ALLEN DU CHAPEAU 1/2" x 3"	65	JOINT TORIQUE INF. ECROU MANOEUV.	120	FAISCEAU DE FILS
10	BOULON & ECROU DU CORPS 5/8" x 3"	36	GARNITURE DU BOUCHON 65MM	67	VIS DE BLOCAGE DE LA BOUCHE 1/4" x 3/4"	125	PLAQUE DE SUPPORT OPERCULE D67M-P I-METB-HYD
11	BRIDE DE RUPTURE	36-1	GARN. DU BOUCHON DE POMPAGE	67-1	CHEVILLE BLOCAGE PRISE POMPAGE	126	CAPTEUR POUR LA PRESSION
12	GUIDE DE TIGE	43	ANNEAU DE RETENUE DE LA BRIDE	73	BOULONNET GOUPILLE ACCOUP. SURETE	127	CAPTEUR POUR LA TEMPERATURE
13	BOULON DU GUIDE DE TIGE	45	DOUILLE DE L'OPRICE DE DRAINAGE	74	VIS DE GRAISSAGE	128	JOINT TOR. ECROU BLOCAGE PLAQUE DU SUP. OPERC.
14	TUYAU DE RACCORDEMENT	46	RESSORT DU PURGEUR	82	TIGE SUPERIEURE D67M-P HYDRANT	130	JOINT TOR. PLAQUE SUPPORT OPERC. D67M-P HYD.
15	TREPIED DU PURGEUR	47	BRIDE FLOTTANTE	83	TIGE INFERIEURE D67M-P HYDRANT	131	BOULONS DE L'EXTENSION
16	VIS DE PURGEUR	48	GOUDON TYPE SPIRAL	84	SUPPORT INFERIEUR D67M-P HYDRANT	132	TUBE THERMO-RETRACTABLE DE LA TIGE INF.

Conversion to an existing Clow Hydrant

Conversion

45-60 minutes

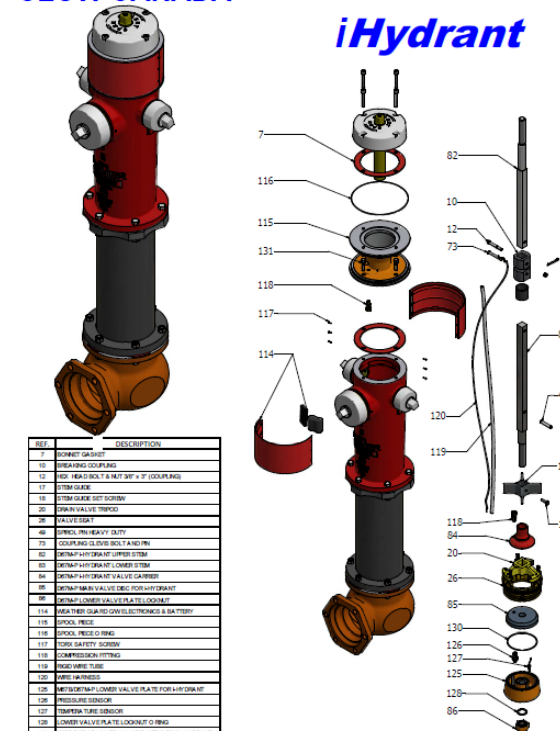


RefNo	DESCRIPTION
87	MAIN VALVE LOCKWASHER
79	BODY CAP GASKET (qy 2)
114	WEATHER GUARD QW ELECTRONICS
115	SPRINGS
116	SPOOL, PIECE O RING
117	TORX SAFETY SCREW (qy 5)
118	COMPRESSION FITTING (qy 2)
119	WIRE TUBE
120	WIRE HARNESS
121	MTS HYDRANT UPPER STEM W/SAFETY CPLG.
122	MTS HYDRANT LOWER STEM
123	HYDRANT ASSEMBLY FOR HYDRANT
124	MTS MAIN VALVE DEC - HYDRANT
125	MTS LOWER VALVE PLATE - HYDRANT
126	PRESSURE SENSOR
127	TEMPERATURE SENSOR
128	LOWER VALVE PLATE LOCKOUT O RING
129	LOWER VALVE PLATE LOCKOUT
130	PLATE O RING
131	MTS M.V. SEAT W/O RINGS

MADE IN CANADA



www.clowcanada.com



REF.	DESCRIPTION
7	ROCKET GAST
15	BEARING COUPLER
12	2000 GAL. BOLT & NUT SET X 2 (COUPLERS)
17	ITEM COUPLER
18	ITEM COUPLER SET SUBMIT
20	2000 GAL. VALVE TIGHTEN
26	VALVE TIGHTEN
46	ITEMS, PER HEAVY QUOTA
73	COUPLER, GLEIVE BOLT & NUT
80	ITEM VALVE TIGHTEN
81	ITEM VALVE TIGHTEN
86	ITEM VALVE TIGHTEN
88	ITEM VALVE TIGHTEN
89	ITEM VALVE TIGHTEN
104	ITEM VALVE TIGHTEN
110	ITEM VALVE TIGHTEN
112	ITEM VALVE TIGHTEN
113	ITEM VALVE TIGHTEN
114	ITEM VALVE TIGHTEN
115	ITEM VALVE TIGHTEN
116	ITEM VALVE TIGHTEN
117	ITEM VALVE TIGHTEN
118	ITEM VALVE TIGHTEN
119	ITEM VALVE TIGHTEN
120	ITEM VALVE TIGHTEN
121	ITEM VALVE TIGHTEN
122	ITEM VALVE TIGHTEN
123	ITEM VALVE TIGHTEN
124	ITEM VALVE TIGHTEN
125	ITEM VALVE TIGHTEN
126	ITEM VALVE TIGHTEN
127	ITEM VALVE TIGHTEN
128	ITEM VALVE TIGHTEN
129	ITEM VALVE TIGHTEN
130	ITEM VALVE TIGHTEN
131	ITEM VALVE TIGHTEN
132	ITEM VALVE TIGHTEN
133	ITEM VALVE TIGHTEN
134	ITEM VALVE TIGHTEN
135	ITEM VALVE TIGHTEN
136	ITEM VALVE TIGHTEN
137	ITEM VALVE TIGHTEN
138	ITEM VALVE TIGHTEN
139	ITEM VALVE TIGHTEN
140	ITEM VALVE TIGHTEN
141	ITEM VALVE TIGHTEN
142	ITEM VALVE TIGHTEN
143	ITEM VALVE TIGHTEN
144	ITEM VALVE TIGHTEN
145	ITEM VALVE TIGHTEN
146	ITEM VALVE TIGHTEN
147	ITEM VALVE TIGHTEN
148	ITEM VALVE TIGHTEN
149	ITEM VALVE TIGHTEN
150	ITEM VALVE TIGHTEN
151	ITEM VALVE TIGHTEN
152	ITEM VALVE TIGHTEN
153	ITEM VALVE TIGHTEN
154	ITEM VALVE TIGHTEN
155	ITEM VALVE TIGHTEN
156	ITEM VALVE TIGHTEN
157	ITEM VALVE TIGHTEN
158	ITEM VALVE TIGHTEN
159	ITEM VALVE TIGHTEN
160	ITEM VALVE TIGHTEN
161	ITEM VALVE TIGHTEN
162	ITEM VALVE TIGHTEN
163	ITEM VALVE TIGHTEN
164	ITEM VALVE TIGHTEN
165	ITEM VALVE TIGHTEN
166	ITEM VALVE TIGHTEN
167	ITEM VALVE TIGHTEN
168	ITEM VALVE TIGHTEN
169	ITEM VALVE TIGHTEN
170	ITEM VALVE TIGHTEN
171	ITEM VALVE TIGHTEN
172	ITEM VALVE TIGHTEN
173	ITEM VALVE TIGHTEN
174	ITEM VALVE TIGHTEN
175	ITEM VALVE TIGHTEN
176	ITEM VALVE TIGHTEN
177	ITEM VALVE TIGHTEN
178	ITEM VALVE TIGHTEN
179	ITEM VALVE TIGHTEN
180	ITEM VALVE TIGHTEN
181	ITEM VALVE TIGHTEN
182	ITEM VALVE TIGHTEN
183	ITEM VALVE TIGHTEN
184	ITEM VALVE TIGHTEN
185	ITEM VALVE TIGHTEN
186	ITEM VALVE TIGHTEN
187	ITEM VALVE TIGHTEN
188	ITEM VALVE TIGHTEN
189	ITEM VALVE TIGHTEN
190	ITEM VALVE TIGHTEN
191	ITEM VALVE TIGHTEN
192	ITEM VALVE TIGHTEN
193	ITEM VALVE TIGHTEN
194	ITEM VALVE TIGHTEN
195	ITEM VALVE TIGHTEN
196	ITEM VALVE TIGHTEN
197	ITEM VALVE TIGHTEN
198	ITEM VALVE TIGHTEN
199	ITEM VALVE TIGHTEN
200	ITEM VALVE TIGHTEN

MADE IN CANADA



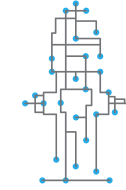
www.clowcanada.com



POWERFUL ANALYTICS.
ACTIONABLE INSIGHTS.



Model	<ul style="list-style-type: none">• 1100-XXX03, 1100-XXX04, 1100-XXX05
Description	<ul style="list-style-type: none">• Wireless Pressure and Temperature Monitor for Dry Barrel Hydrants
Pressure Sensor	<ul style="list-style-type: none">• Pressure Range: -15-500 psi• Over Pressure: 1000 psi• Burst Pressure: 2500 psi• Accuracy: +/-0.75% Full Scale
Temperature Sensor	<ul style="list-style-type: none">• Accuracy: +/-1.0° C
Data Logging	<ul style="list-style-type: none">• Sample Rate: Configurable up to 256 samples/sec• Data Captured: Minimum, maximum, and average pressure and temperature• Interval Read: Five minute anchor reads• Memory: Greater than 100,000 data values
Event/Alert Monitoring	<ul style="list-style-type: none">• Configurable minimum/maximum pressure, temperature and transient thresholds• Thirty second pre and post event detail capture• Pressure, temperature alerts sent via email or text
Battery	<ul style="list-style-type: none">• 38 Ah Lithium
Communication	<ul style="list-style-type: none">• Cellular: LTE Rogers
Software	<ul style="list-style-type: none">• iHydrant® Cloud based software platform
Enclosure	<ul style="list-style-type: none">• IP 65 rated advanced polycarbonate shield• OEM ductile iron spool• Retrofittable kit or factory installed with new hydrant
Dimensions	<ul style="list-style-type: none">• Spool and Enclosure Height: 6"• Clow Canada Brigadier: 10" Diameter Spool• Clow Canada Premier: 10" Diameter Spool



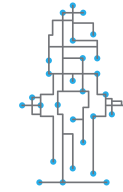
POWERFUL ANALYTICS.
ACTIONABLE INSIGHTS.

Warranties

🔧 2 years on electronic components

🔧 12 years for the hydrant





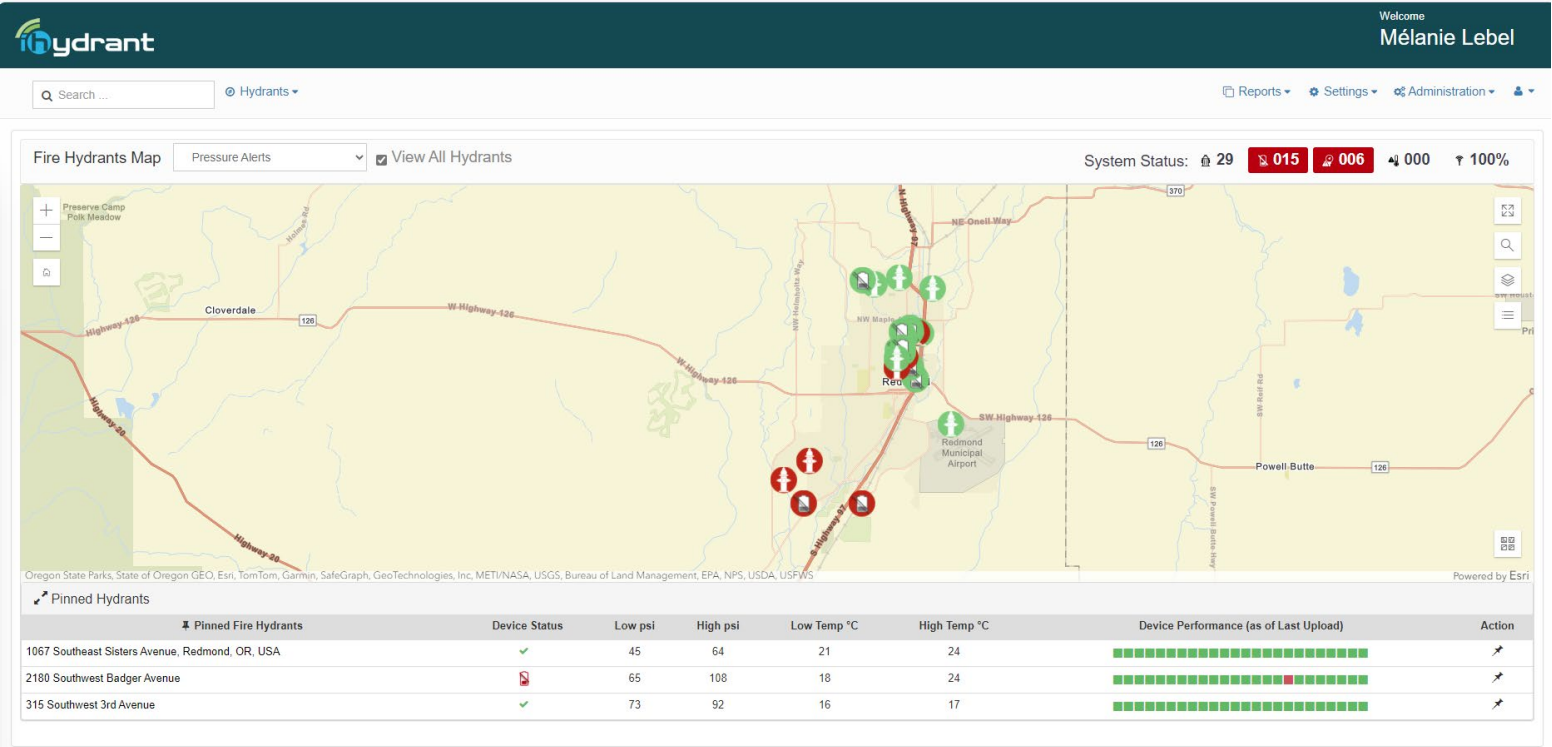
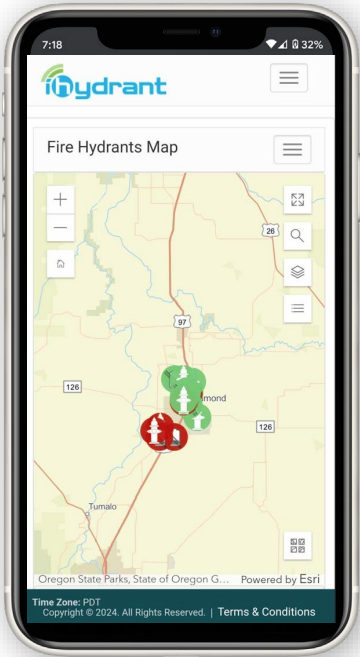
POWERFUL ANALYTICS.
ACTIONABLE INSIGHTS.

Software / Data

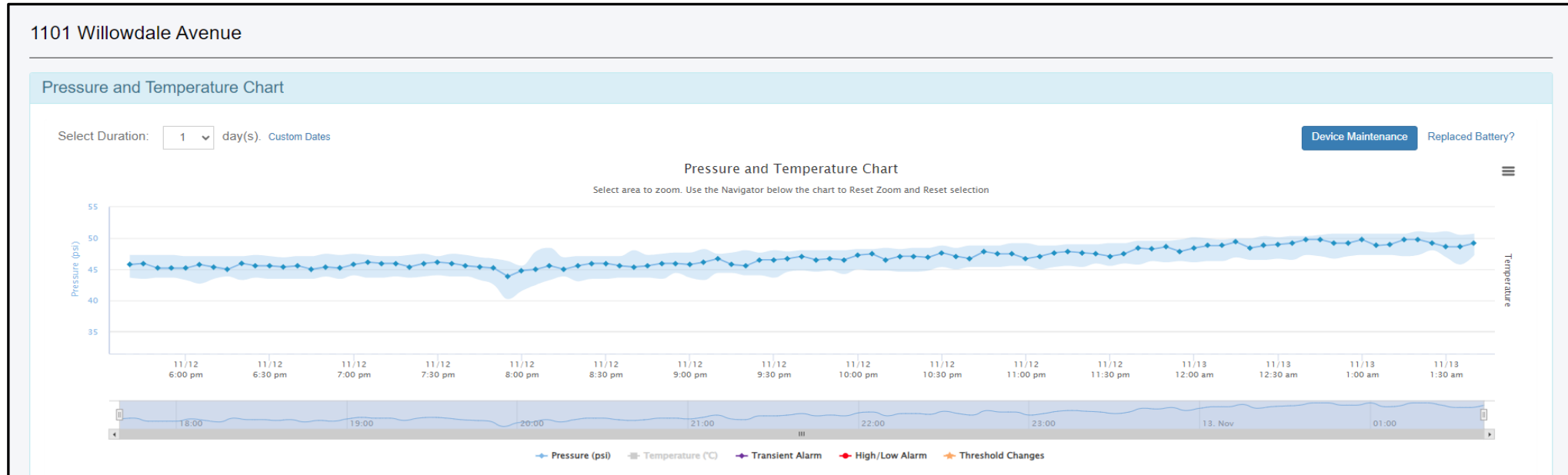
Real-time Intelligence. Insightful Analytics.

Software Package

- 📶 Hosted, cloud-based platform
- 📶 Accessible via internet
- 📶 No downloads



Pressure Readings



Settings

- 📡 1 to 256 readings per second
- 📡 1 average reading every 5 minutes
- 📡 Download every 12 hours

Alerts

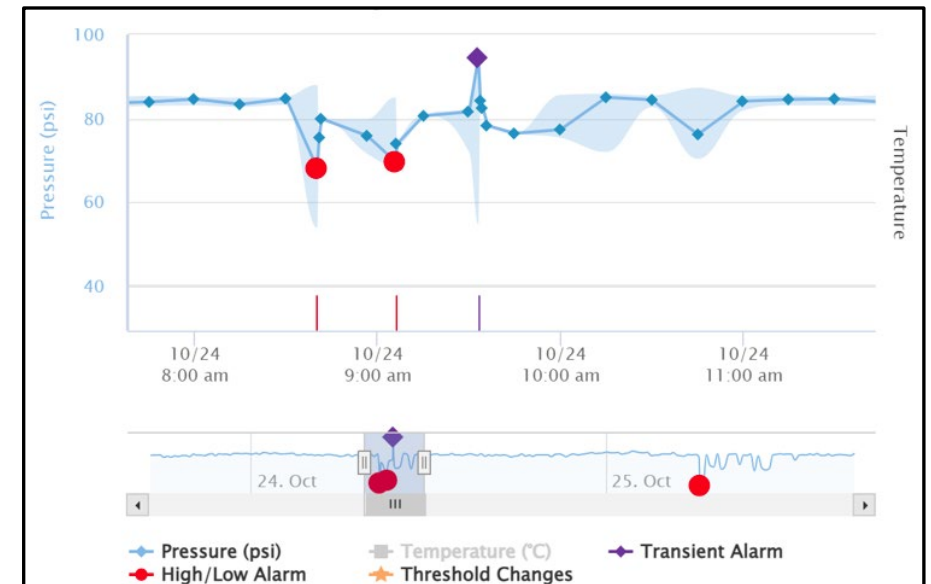


Low Battery Alert Feature


Pinned Hydrants	
Pinned Fire Hydrants	Device Status
1 Brimley Road	✓
100 Jutland Road	✓
1101 Willowdale Avenue	🔋
118 Milford Haven Drive	✓
212 Victoria Park Avenue	✓



Pressure, Temperature and Transient Alerts can be customized according to municipality needs



Optimizing Battery Life



Hydrants ▾

Device Detail

Device Info

Uploaded Info

Device Configuration

Threshold Settings

Notes

Device Mode

Communication Server

Alarm Enable

Sample: 64/sec | Store: every 5 min | Upload: every 12 hours ▾

-- Select One --
Sample: 1/sec | Store: every 5 min | Upload: every 12 hours
Sample: 4/sec | Store: every 5 min | Upload: every 12 hours
Sample: 64/sec | Store: every 5 min | Upload: every 12 hours
Sample: 128/sec | Store: every 5 min | Upload: every 12 hours
Sample: 256/sec | Store: every 5 min | Upload: every 12 hours

Alerts - Notifications

From: Admin <admin@ihydrant.com>
Sent: Monday, December 18, 2023 12:10:25 PM
To: Adrian Sloan <adrian.sloan@mcwane.com>; Austin Turner <austin.turner@clowcanada.com>;
Melanie Lebel <melanie.lebel@clowcanada.com>;

Subject: iHydrant Alert : kingstonon: Low Pressure 39.47 PSI at 1429 Sydenham Road

ATTENTION: This email came from an EXTERNAL SENDER and should be CHECKED CAREFULLY BEFORE OPENING!

Alert Low Pressure Pressure Range 37.56 PSI - 69.03 PSI
Device Threshold : Min Pressure 40 PSI
Location : 1429 Sydenham Road IMEI : 89302720395914296832
Time : Dec 18 2023 5:09PM (UTC) / Dec 18 2023 12:09PM (EST)

Action Required.

- 📡 Instant Data Downloads for Pressure and Temperature
- 📡 Text message or email
- 📡 Allows you to intervene before complaints from citizens
- 📡 Reduces the amount of water loss

And why the temperature?

1101 Willowdale Avenue

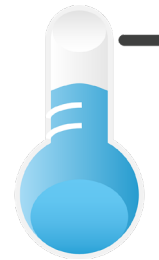
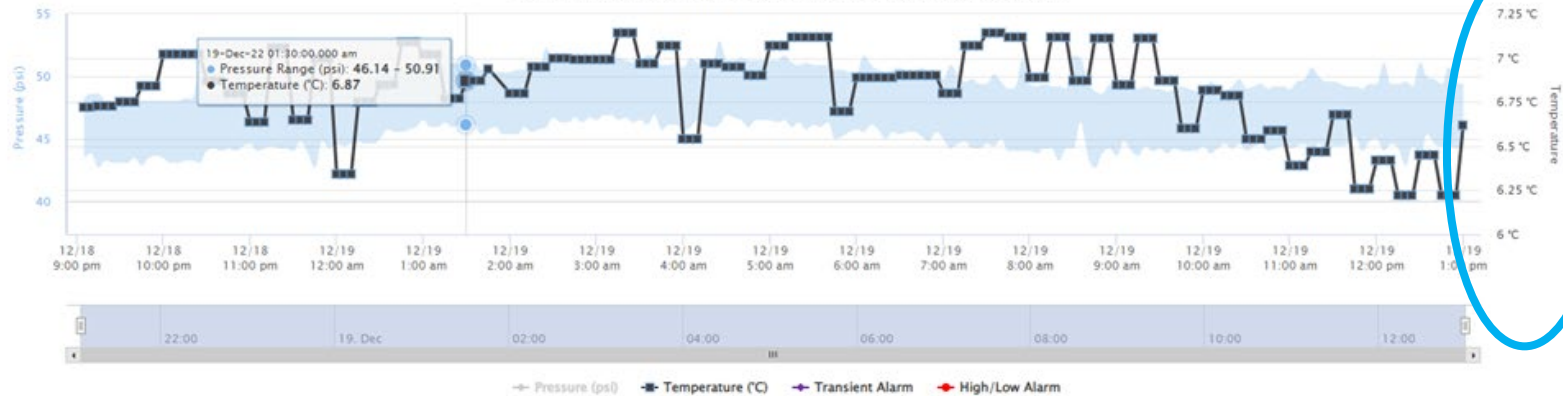
Pressure and Temperature Chart

Select Duration: 1 day(s). Custom Dates

Device Maintenance

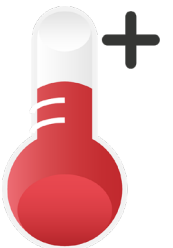
Pressure and Temperature Chart

Select area to zoom. Use the Navigator below the chart to Reset Zoom and Reset selection



Risk of frost

Bacteriological proliferation to be monitored





Examples...



Abnormal High-Pressure Alarm – Rosser

Summit Road

Pressure and Temperature Chart

Start Date: 10/24/2023 01:20 AM

End Date: 10/28/2023 01:20 AM

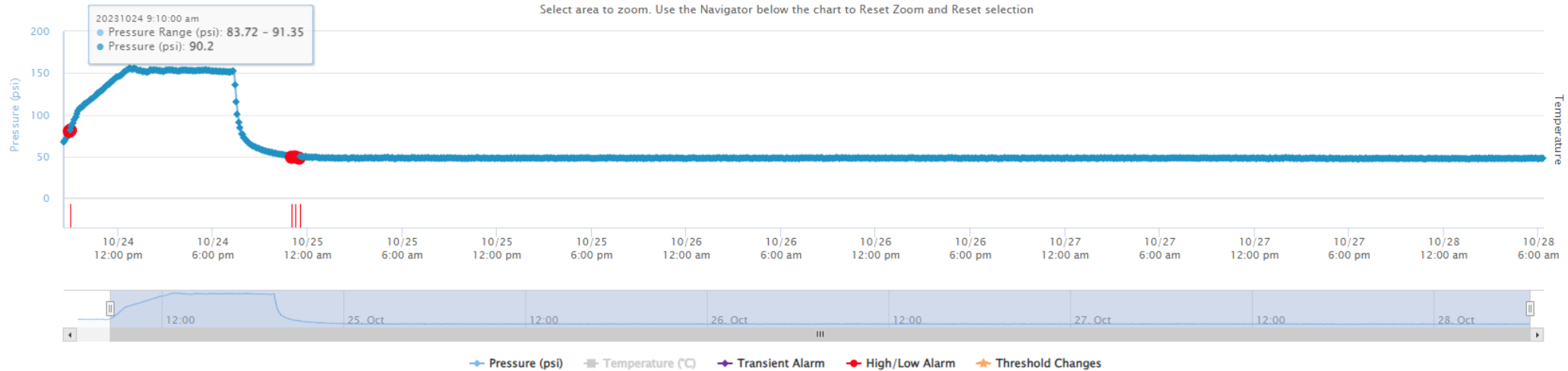
[Update chart with revised date](#) [Hide Custom Dates](#)

[Device Maintenance](#)

[Replaced Battery?](#)

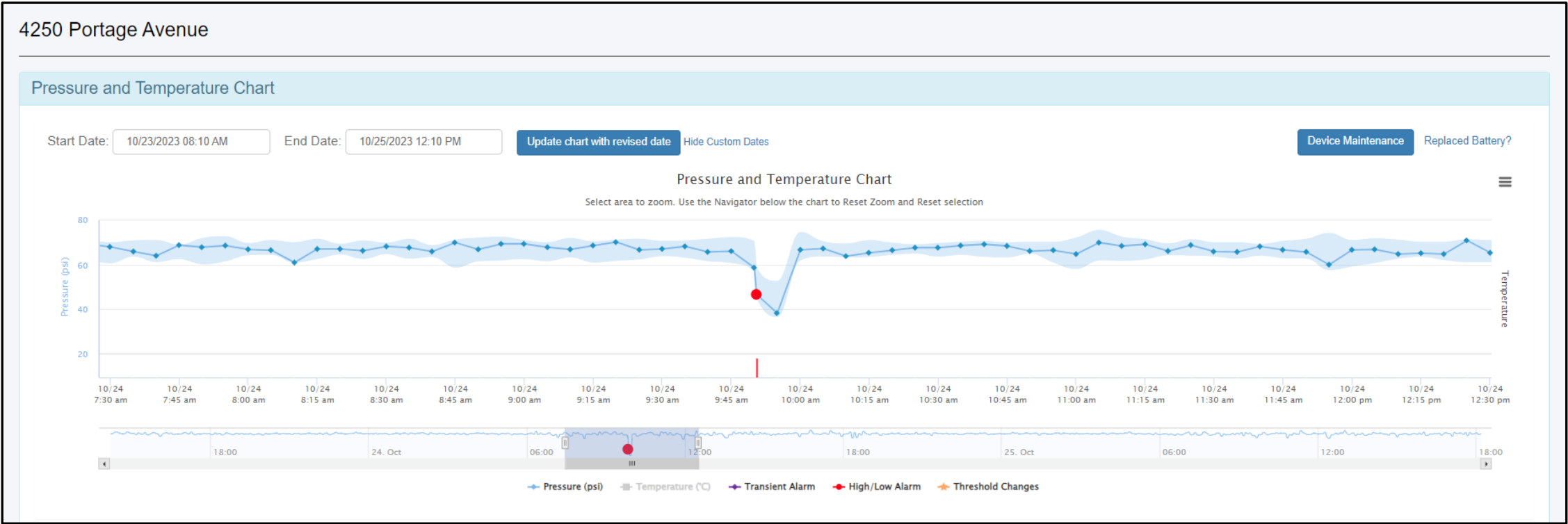
Pressure and Temperature Chart

Select area to zoom. Use the Navigator below the chart to Reset Zoom and Reset selection



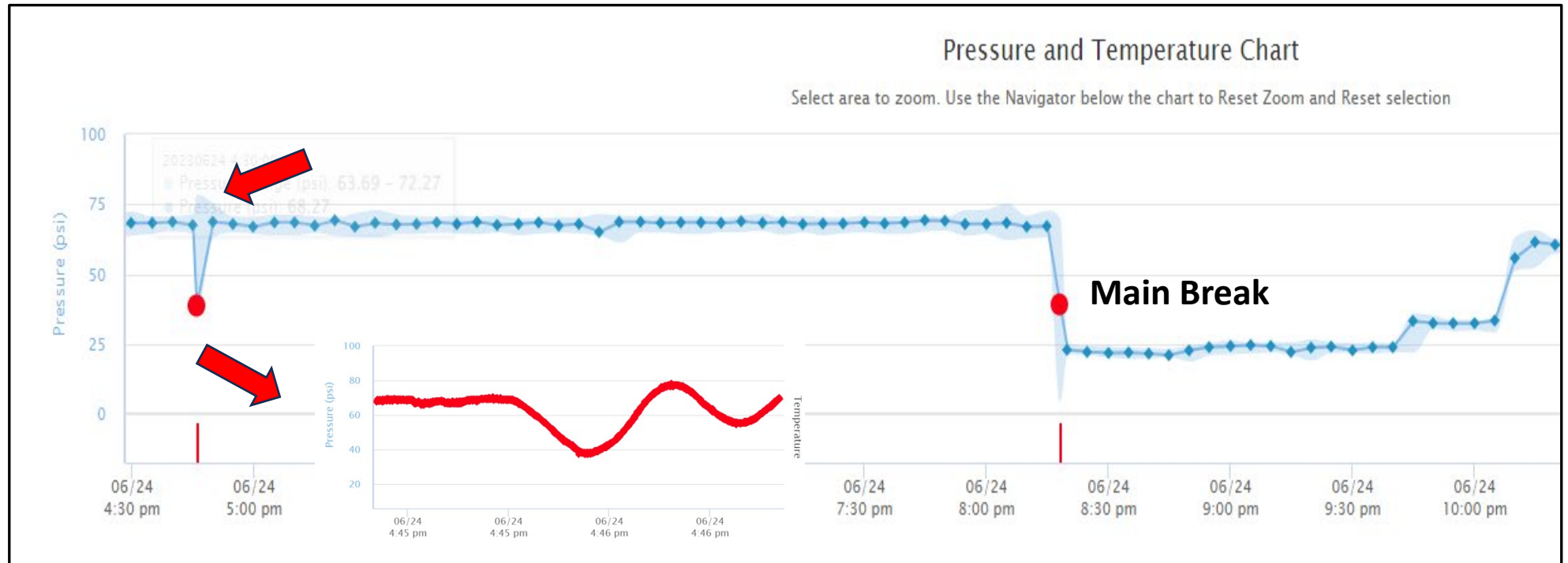


Water Theft – Headingley Manitoba



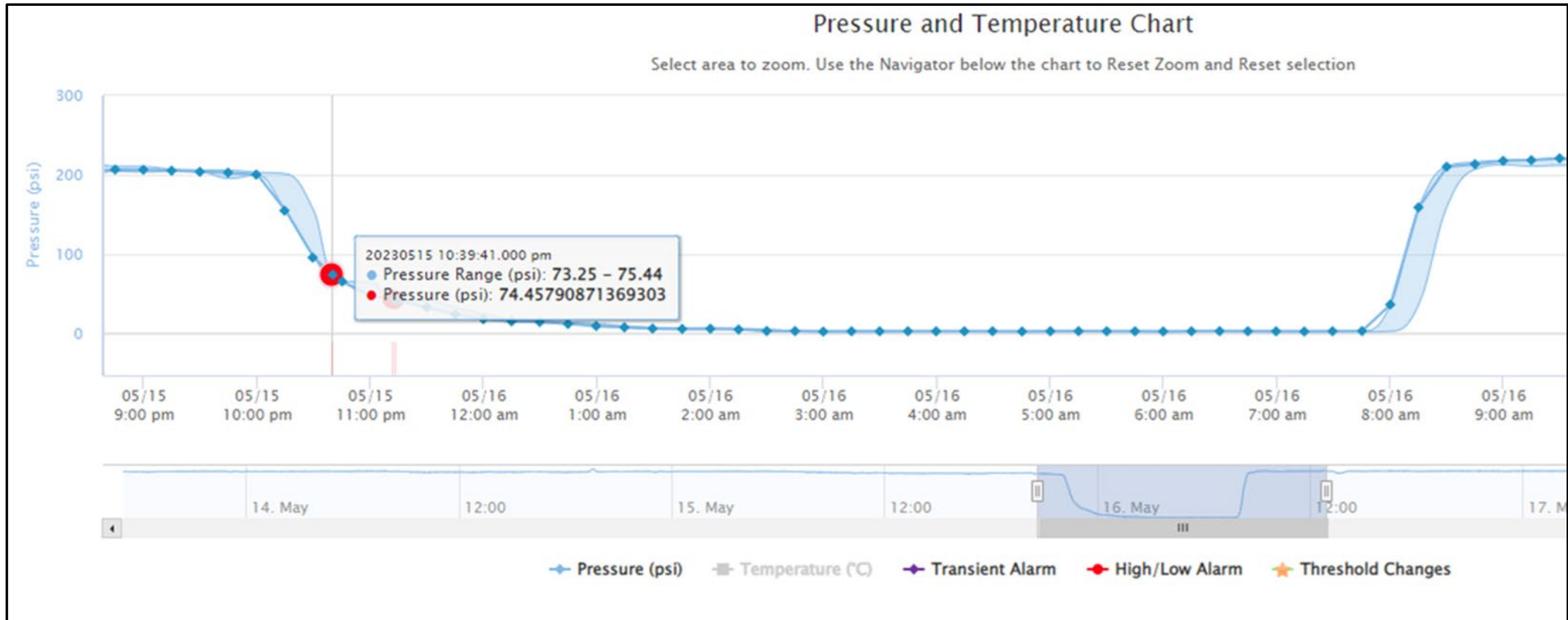
Transient caused Main Break – Ontario

Transient detected a few hours before the 16" PVC main break



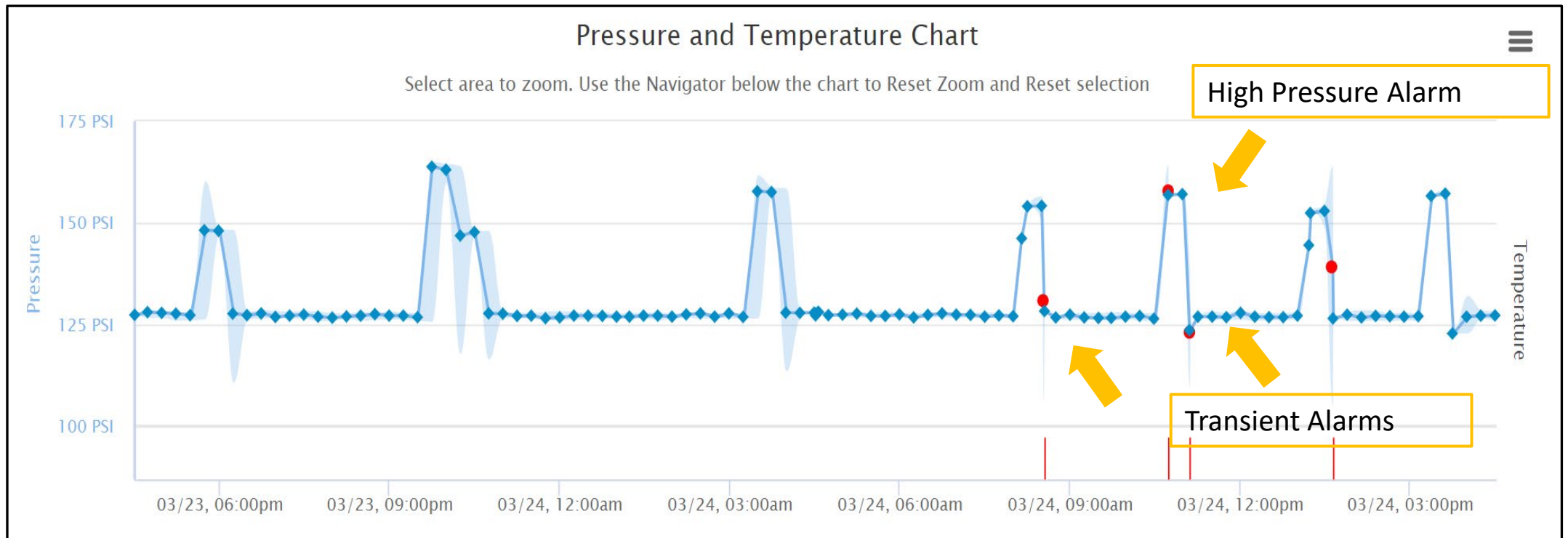


Penticton BC – Plugged Screening System





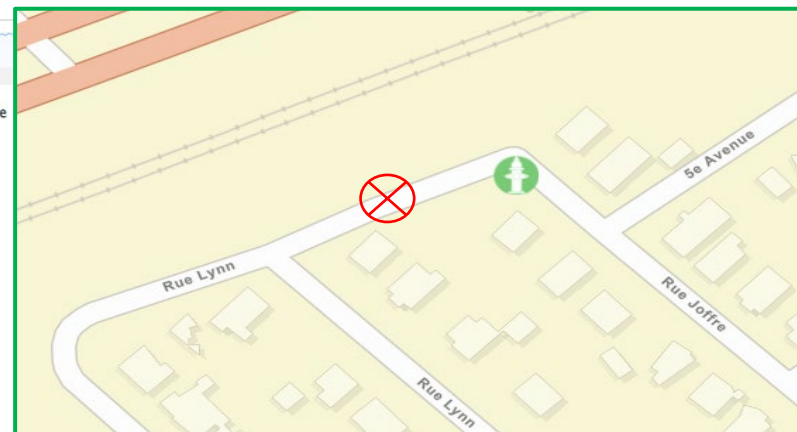
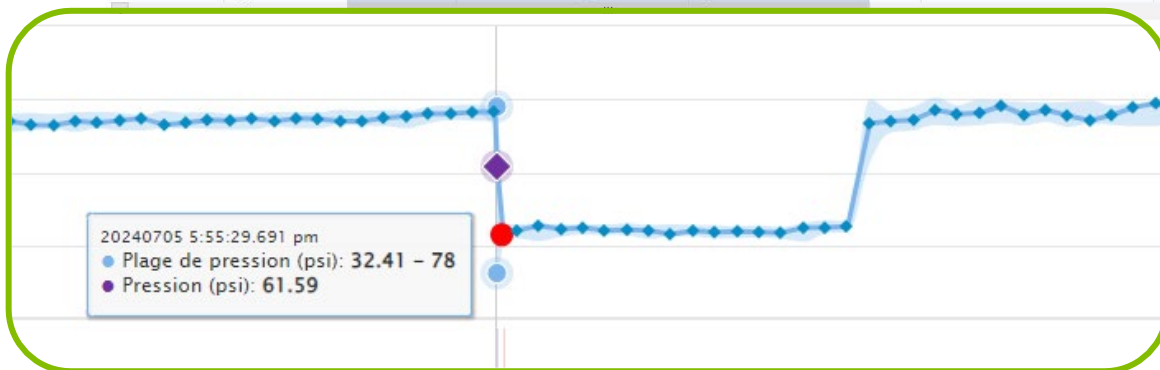
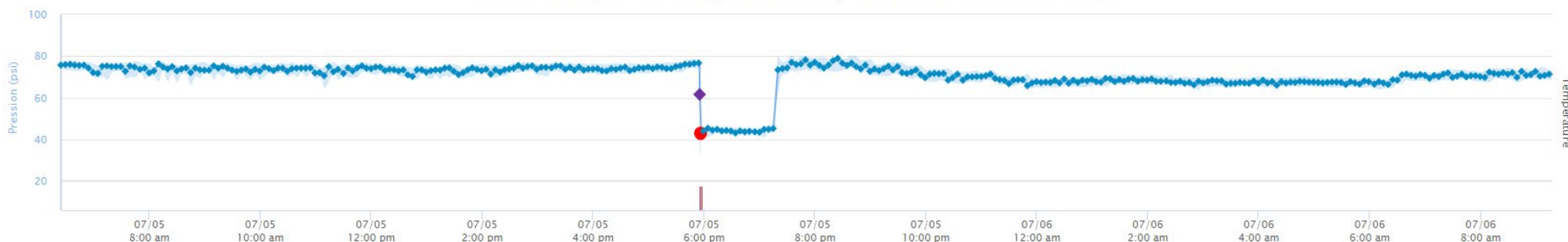
Identify Unknown Issue - British Columbia



McMasterville QC

Tableau de pression et de température

Sélectionner la zone à agrandir. Utiliser le navigateur sous le tableau pour réinitialiser le zoom et réinitialiser la sélection





Longueuil QC

GRAND MONTRÉAL



Agglomération de Longueuil

Avis d'ébullition d'eau dans deux secteurs



Un avis d'ébullition d'eau pour Saint-Bruno-de-Montarville et une portion de l'arrondissement de Saint-Hubert a été émis par la Ville de

Longueuil, mercredi en fin d'après-midi. Les personnes visées ne doivent pas boire l'eau du robinet jusqu'à nouvel ordre.

Publié hier à 19h09



FANNIE ARCAND
La Presse



L'eau du robinet n'est pas adéquate pour la consommation sécuritaire, à Saint-Bruno-de-Montarville et dans une portion de Saint-Hubert, depuis qu'une baisse de pression d'eau est survenue pendant des travaux dans le réseau d'eau potable de la Ville de Longueuil.

**Pressure drop below 20 psi
was detected by the iHydrant**



POWERFUL ANALYTICS.
ACTIONABLE INSIGHTS.

You have questions?

Martin Phinney, P.Eng

McWane Canada

Atlantic Sales Engineer

C 506-961-9229

Martin.Phinney@canadapipe.com



THANK YOU!