

# Water Resources Management MET Station Network

Randy Parsons, Environmental Monitoring Specialist

Department of Environment and Climate Change

[randolphparsons@gov.nl.ca](mailto:randolphparsons@gov.nl.ca)

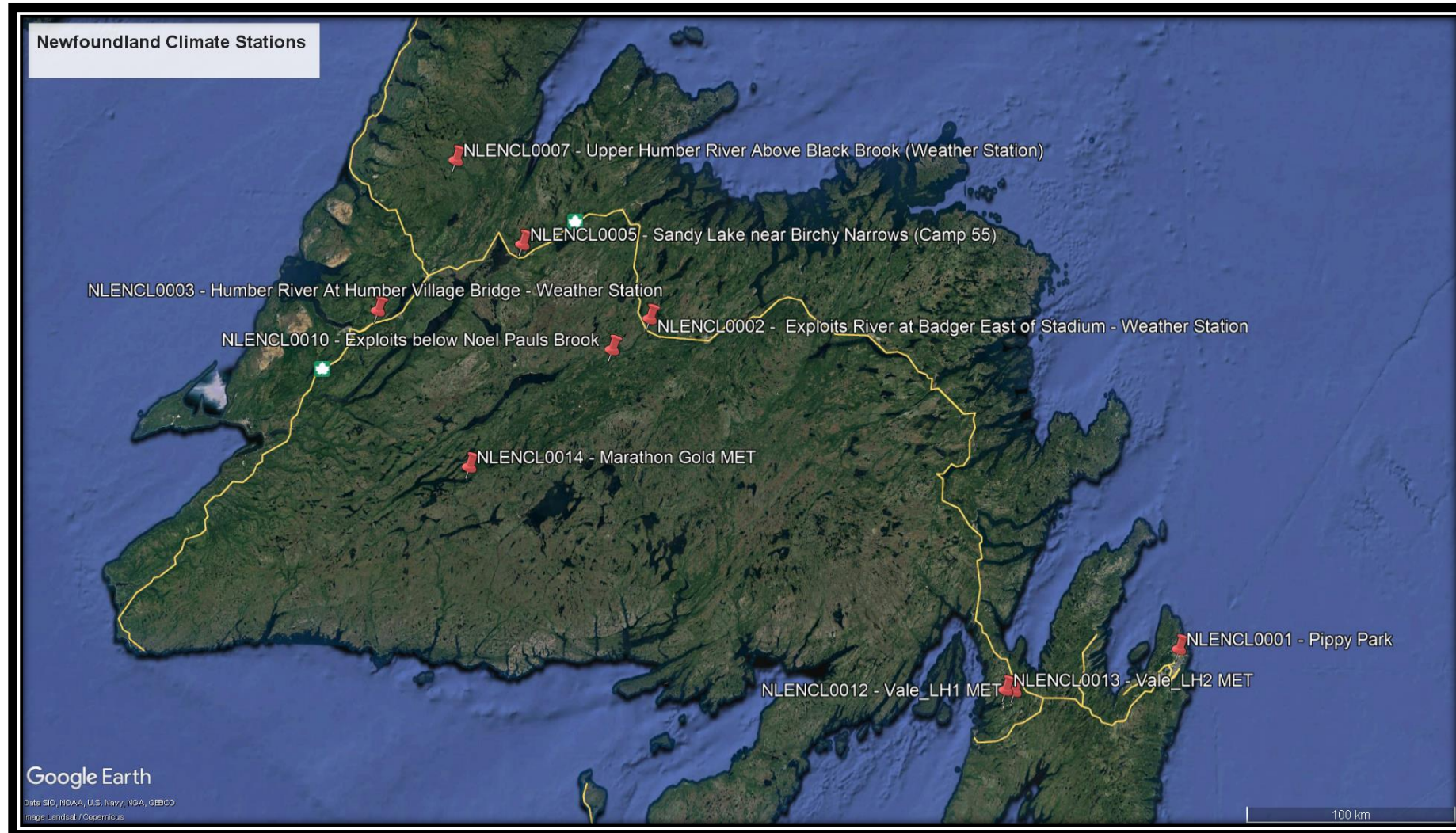
# Introduction

Total 13 stations





# Location





# Location



# Location - Mobile

## Mobile Environmental Monitoring Platform (MEMP)





# What Do We Measure?

All stations in our network are equipped with the sensors to record at least the following 8 parameters:

- Air Temperature (°C)
- Relative Humidity (%)
- Atmospheric Pressure (kPa)
- Precipitation (mm)
- Snow Depth (m)
- Solar Radiation (KJ/m<sup>2</sup>)
- Wind Speed (km/h)
- Wind Direction (°)

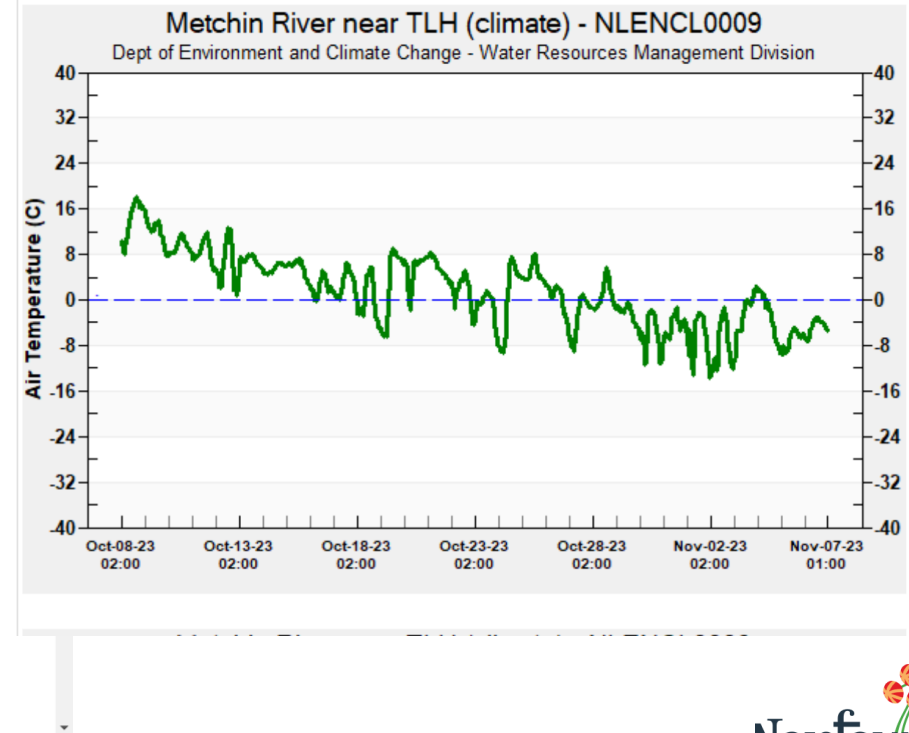
# What Do We Measure?

Water Resources - Dept. of Envir  
mae.gov.nl.ca/wrmd/ADRS/v6/Graphs\_List.asp

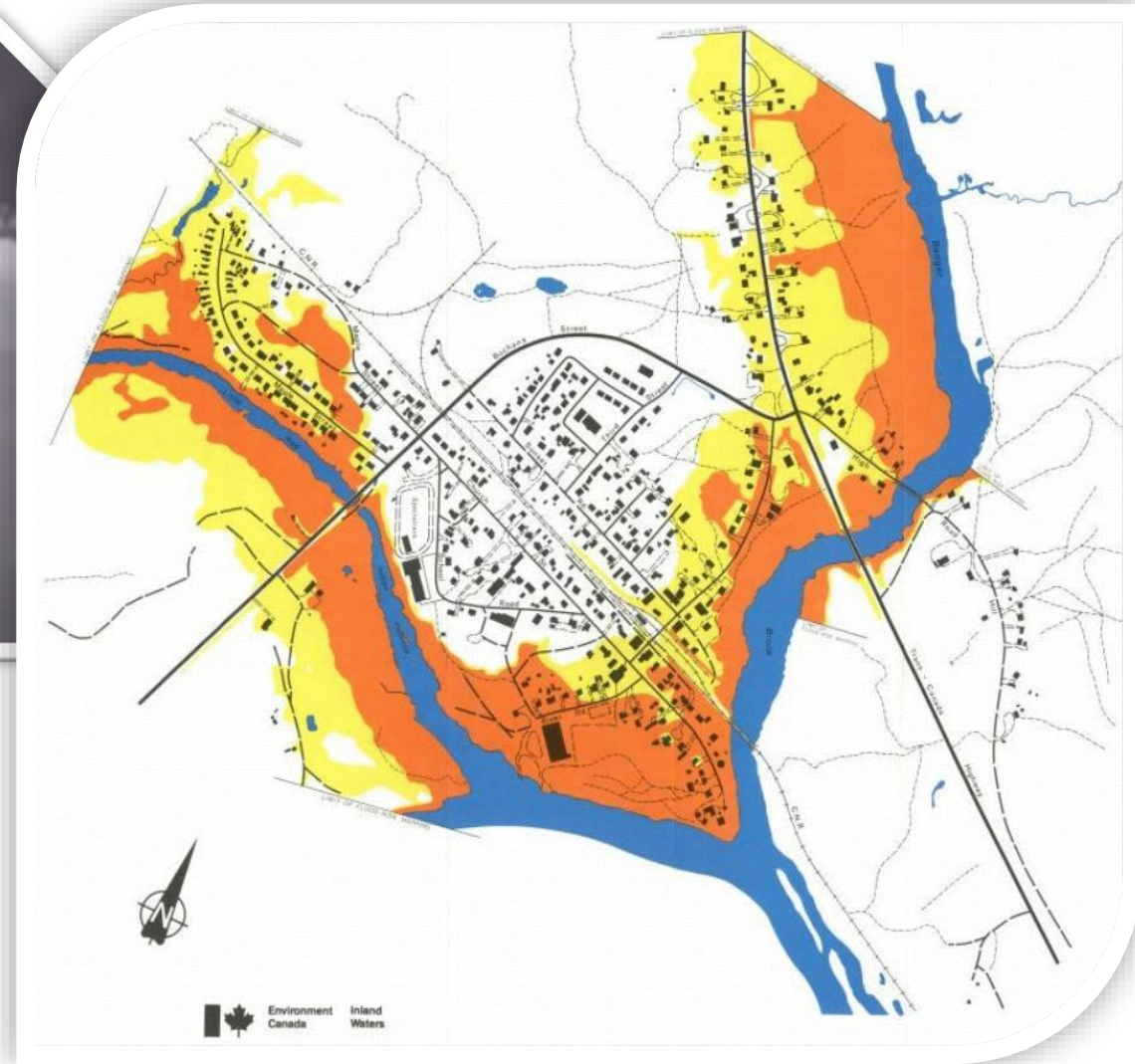
<a href="#">Northern Labrador</a>	<a href="#">Western Labrador</a>	<a href="#">Churchill River and Lake Melville</a>	<a href="#">Coastal and Southern Labrador</a>	<a href="#">Northern Peninsula</a>
<a href="#">West Coast, Humber and Baie Verte</a>	<a href="#">Exploits River and Norte Dame Bay</a>	<a href="#">South Coast and Burin Peninsula</a>	<a href="#">Trinity Bonavista and Gander</a>	<a href="#">Avalon Peninsula</a>

Northern Labrador												
<a href="#">Tertiary Basin</a>	Name	<a href="#">Stage-Flow</a>	<a href="#">Vertical Datum</a>	<a href="#">Flood Warning</a>	<a href="#">WQ</a>	<a href="#">Climate</a>	<a href="#">Snow</a>	<a href="#">Water Temp</a>	<a href="#">GW</a>	<a href="#">Camera</a>	<a href="#">ADRS</a>	<a href="#">EC</a>
03NE	Camp Pond	Stage	Assumed								<a href="#">03NE003</a>	<a href="#">EC</a>
03NE	Camp Pond Brook below Camp Pond	Stage/Flow	Assumed		WQ			WT			<a href="#">NF03NE0010</a>	<a href="#">EC</a>
03NE	Reid Brook at Outlet of Reid Pond	Stage/Flow	Assumed		WQ			WT			<a href="#">NF03NE0009</a>	<a href="#">EC</a>
03NE	Reid Brook below Tributary	Stage/Flow	Assumed		WQ			WT			<a href="#">NF03NE0011</a>	<a href="#">EC</a>
03NE	Tributary to Reid Brook	Stage/Flow	Assumed		WQ			WT			<a href="#">NF03NE0012</a>	<a href="#">EC</a>
03NF	Ugjoktok River below Harp Lake	Stage/Flow	Assumed	HF							<a href="#">03NF001</a>	<a href="#">EC</a>
Western Labrador												
<a href="#">Tertiary Basin</a>	Name	<a href="#">Stage-Flow</a>	<a href="#">Vertical Datum</a>	<a href="#">Flood Warning</a>	<a href="#">WQ</a>	<a href="#">Climate</a>	<a href="#">Snow</a>	<a href="#">Water Temp</a>	<a href="#">GW</a>	<a href="#">Camera</a>	<a href="#">ADRS</a>	<a href="#">EC</a>
03OC	Atikonak River above Panchia Lake	Stage/Flow	Assumed					WT			<a href="#">eMail Us</a>	<a href="#">EC</a>
03OA	Dumbell Stream above Dumbell Lake	Stage	Assumed		WQ			WT			<a href="#">NF03OA0023</a>	<a href="#">EC</a>
03OB	Eloss Creek below Pinette Lake Inflow	Stage	Assumed		WQ			WT			<a href="#">NF03OB0039</a>	<a href="#">EC</a>
03OA	Flora Creek below Trans Labrador Highway	Stage	Assumed		WQ			WT			<a href="#">NF03OA0022</a>	<a href="#">EC</a>
03OB	Joan Brook below Outlet of Joan Lake	Stage	Assumed		WQ			WT			<a href="#">NF03OB0042</a>	<a href="#">EC</a>
03OA	Luce Brook below Tinto Pond	Stage/Flow	Assumed								<a href="#">03OA012</a>	<a href="#">EC</a>

Observed at: NLENCL0009 - Metchin River near TLH (climate)	Date: Tuesday, November 7 1:00 AM NST
Temperature: -6.4 °C	Relative Humidity: 77.5 %
Wind: W 2.9 km/h Gust 15.8 km/h	Last Hourly Precipitation: 0.0 mm
Barometric Pressure (BP): 101.3 kPa	BP Tendency: Rising



# Purpose & Drivers – Flooding





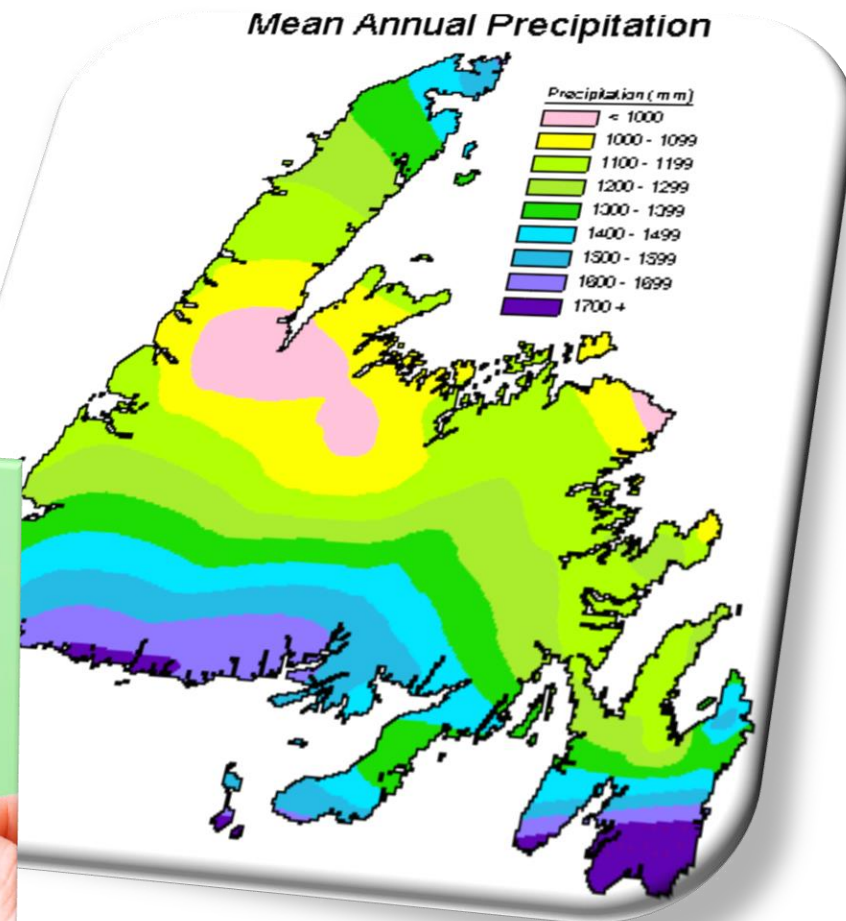
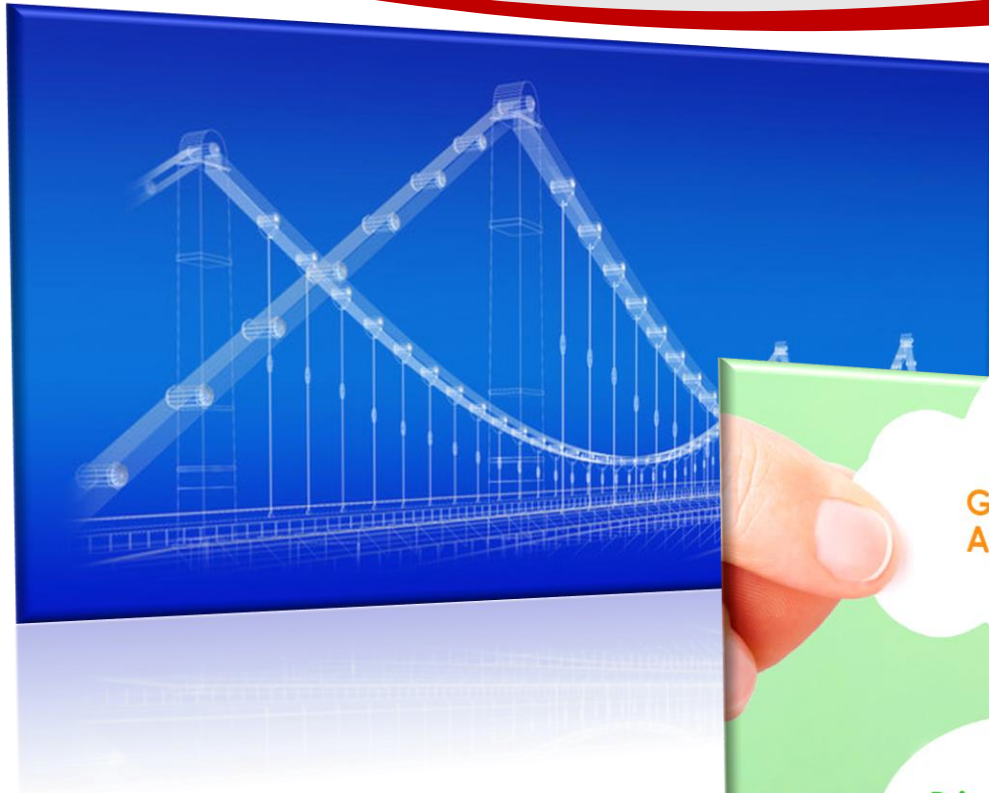
# Purpose & Drivers – Industry

NL Hydro, Vale Long Harbour and Marathon-Gold all have partnered stations with WRMD.

Partner will provide equipment and site set up with guidance from WRMD, then WRMD will install on site, pull data into our Automatic Data Retrieval System (ADRS) and display on the government website graphically.

[https://www.mae.gov.nl.ca/wrmd/ADRS/v6/Graphs\\_List.asp](https://www.mae.gov.nl.ca/wrmd/ADRS/v6/Graphs_List.asp)

# Purpose & Drivers – Other





# Partnerships

Climate Network Owners Workshop is held virtually or in person each year.



**Thanks For Listening!**

