

## **Real-Time Water Quality Report Teck: Duck Pond Operations**

**Deployment Period  
October 27<sup>th</sup>, 2021 to May 11<sup>th</sup>, 2022**



**Government of Newfoundland & Labrador  
Department of Environment and Climate Change  
Water Resources Management Division**

Table of Contents

Table of Figures .....ii

General..... 1

Quality Assurance and Quality Control..... 2

Results ..... 3

    Water Temperature ..... 3

    pH..... 5

    Specific Conductivity ..... 7

    Dissolved Oxygen ..... 9

    Turbidity ..... 11

    Stage and Total Precipitation..... 13

## Table of Figures

Table 1 Instrument Performance Ranking classifications for deployment and removal.....	2
Table 2 Instrument performance rankings .....	2
Table 3. Statistical temperature data for Tributary to Gills Pond Brook and East Pond Brook from October 27, 2021 to May 11 2022.	3
Table 4. Statistical pH data for Tributary to Gills Pond Brook and East Pond Brook for October 27, 2021 to May 22, 2022.....	5
Table 5. Statistical conductivity data for Tributary to Gills Pond Brook and East Pond Brook for October 27, 2021 to May 22, 2022.	7
Table 6. Statistical Dissolved Oxygen data for Tributary to Gills Pond Brook and East Pond Brook for October 27, 2021 to May 22, 2022. ....	9
Table 7. Statistical turbidity data for Tributary to Gills Pond Brook and East Pond Brook for October 27, 2021 to May 22, 2022. ....	11
Table 1 Instrument Performance Ranking classifications for deployment and removal.....	2
Table 2 Instrument performance rankings .....	2
Table 3. Statistical temperature data for Tributary to Gills Pond Brook and East Pond Brook from October 27, 2021 to May 11 2022.	3
Table 4. Statistical pH data for Tributary to Gills Pond Brook and East Pond Brook for October 27, 2021 to May 22, 2022.....	5
Table 5. Statistical conductivity data for Tributary to Gills Pond Brook and East Pond Brook for October 27, 2021 to May 22, 2022.	7
Table 6. Statistical Dissolved Oxygen data for Tributary to Gills Pond Brook and East Pond Brook for October 27, 2021 to May 22, 2022. ....	9
Table 7. Statistical turbidity data for Tributary to Gills Pond Brook and East Pond Brook for October 27, 2021 to May 22, 2022. ....	11

## General

This report will review the water quality data for the following two real-time water quality monitoring stations at TECK Duck Pond: Tributary to Gills Pond Brook and East Pond Brook below East Pond, for the duration of October 27, 2021 through to May 11, 2022.

These stations are a part of the Real-Time Water Quality Network. The stations are maintained by the Department of Environment and Climate Change, Water Resources Management Division (WRMD). WRMD staff are responsible for the maintenance and calibration of the water quality instruments deployed at these sites. The data recorded by the real-time water quality stations is available on the real-time website (<https://www.gov.nl.ca/ecc/waterres/rti/rtwq/>).

For the purposes of this report, air temperature and total precipitation data were used from the weather station located in Millertown. The data was retrieved from <https://climate.weather.gc.ca/>.

## Quality Assurance and Quality Control

To ensure the effectiveness and reliability of the real time water quality monitoring program, quality assurance, quality control, and quality assessment procedures have been implemented. As part of the Quality Assurance and Quality Control protocol (QA/QC) an assessment of the reliability of data recorded by an instrument is made at the beginning and end of the deployment period. The procedure is based on the approach used by the United States Geological Survey.

At deployment and removal, a QA/QC sonde is temporarily deployed adjacent to the Field sonde. Values for temperature, pH, conductivity, dissolved oxygen and turbidity are compared between the two instruments. Based on the degree of difference between the parameters on the Field Sonde and QA/QC sonde at deployment and at removal, a qualitative statement is made on the data quality (Table 1).

Table 1 Instrument Performance Ranking classifications for deployment and removal

Parameter	Rank				
	Excellent	Good	Fair	Marginal	Poor
Temperature (°C)	$\leq \pm 0.2$	$> \pm 0.2$ to 0.5	$> \pm 0.5$ to 0.8	$> \pm 0.8$ to 1	$< \pm 1$
pH (unit)	$\leq \pm 0.2$	$> \pm 0.2$ to 0.5	$> \pm 0.5$ to 0.8	$> \pm 0.8$ to 1	$> \pm 1$
Sp. Conductance ( $\mu\text{S}/\text{cm}$ )	$\leq \pm 3$	$> \pm 3$ to 10	$> \pm 10$ to 15	$> \pm 15$ to 20	$> \pm 20$
Sp. Conductance $> 35 \mu\text{S}/\text{cm}$ (%)	$\leq \pm 3$	$> \pm 3$ to 10	$> \pm 10$ to 15	$> \pm 15$ to 20	$> \pm 20$
Dissolved Oxygen (mg/L) (% Sat)	$\leq \pm 0.3$	$> \pm 0.3$ to 0.5	$> \pm 0.5$ to 0.8	$> \pm 0.8$ to 1	$> \pm 1$
Turbidity $< 40$ NTU (NTU)	$\leq \pm 2$	$> \pm 2$ to 5	$> \pm 5$ to 8	$> \pm 8$ to 10	$> \pm 10$
Turbidity $> 40$ NTU (%)	$\leq \pm 5$	$> \pm 5$ to 10	$> \pm 10$ to 15	$> \pm 15$ to 20	$> \pm 20$

The most important sensor on any sonde is the temperature sensor. All other parameters can be divided into subgroups of temperature dependent, temperature compensated, and temperature independent. Due to the temperature sensor's location on the sonde, the entire device must be at a constant temperature before the temperature sensor will stabilize. The values may take some time to climb to the appropriate reading; if a reading is taken too soon it may not accurately portray the water body. The deployment and removal instrument performance rankings for this period are summarized in Table 2.

Table 2 Instrument performance rankings

Station	Date	Action	Comparison Ranking				
			Temp	pH	Sp. Cond.	DO	Turbidity
Tributary to Gill's Pond Brook	Oct 27, 2021	Deployment	Excellent	Excellent	Good	Good	Excellent
	May 11, 2022	Removal	Good	Excellent	Good	Fair	Excellent
East Pond Brook below East Pond	October 27, 2021	Deployment	Excellent	Good	Excellent	Good	Excellent
	May 11, 2022	Removal	Excellent	Fair	Excellent	Poor	Excellent

## Results

### Water Temperature

Water Temperature is a crucial factor used to describe water quality. Temperature has major implications on both the ecology and chemistry of a water body, governing processes such as the metabolic rate of aquatic plants and animals and the degree of dissolved oxygen saturation.

At Tributary to Gills Pond Brook a temperature range of  $-0.55^{\circ}\text{C}$  to  $14.31^{\circ}\text{C}$  was recorded during this deployment period. The water temperature at East Pond Brook ranged from  $0.07^{\circ}\text{C}$  to  $15.40^{\circ}\text{C}$  (Table 3). For this fall to spring deployment, water temperatures at both stations followed the expected seasonal decreases into winter, and increases into spring. While both neared zero degrees, at the same time in December, Tributary to Gills Pond Brook began experiencing increasing temperatures in the spring before East Pond Brook.

Please note, the stage data is raw data that is published on the ECCC web page. It has not been corrected for backwater effect. WSC is responsible for QA/QC of water quantity data. Corrected data can be obtained upon request to WSC.

Table 3. Statistical temperature data for Tributary to Gills Pond Brook and East Pond Brook from October 27, 2021 to May 11 2022.

Station	Min	Max	Mean	Median
Tributary to Gills Pond Brook	-0.55	14.31	1.15	-0.17
East Pond Brook	0.07	15.40	1.58	0.11

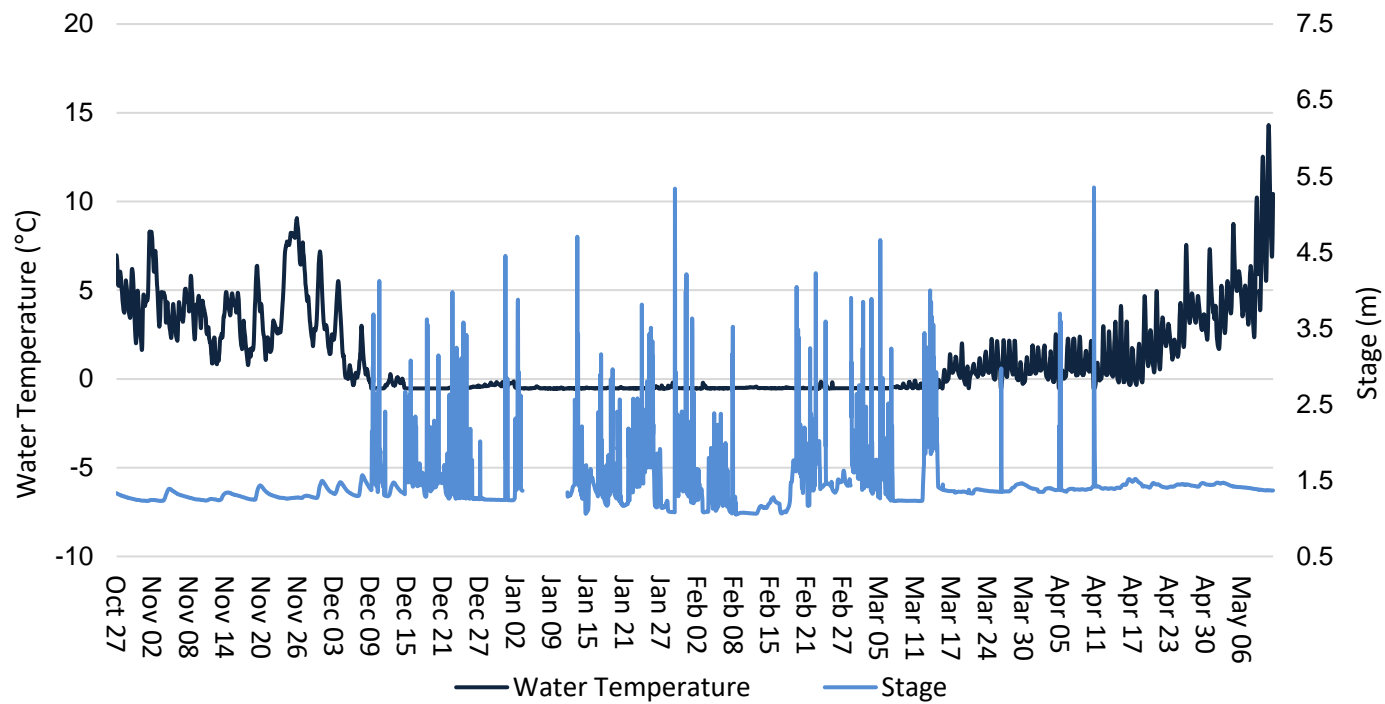


Figure 1 Water Temperature and Stage Level at Tributary to Gills Pond Brook.

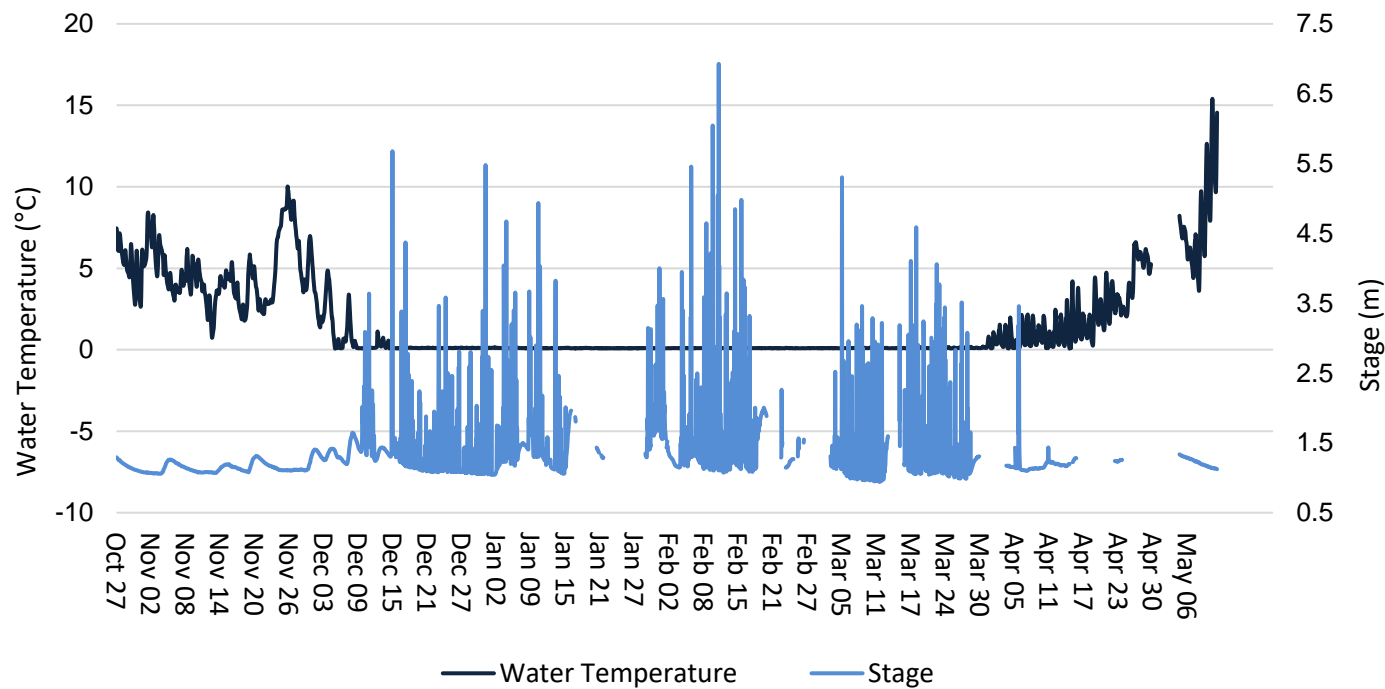


Figure 2 Water Temperature and Stage Level at East Pond Brook.

## pH

pH indicates the acidity or alkalinity of a solution. A value of 7.00 pH units denotes a neutral solution, lower values are acidic, and higher values are basic. The pH levels at Tributary to Gills Pond Brook ranged from 5.50 pH units to a maximum of 7.50 pH units (Table 4). pH at East Pond Brook ranged from 5.35 pH units to 6.72 pH units at this time.

pH is influenced by precipitation runoff and tends to fall slightly as stage increases. During periods of drier or colder weather, water levels decline and pH increases slightly as dissolved ions are not as diluted. pH levels at both locations showed fluctuations during stage events, but remained relatively stable over the long deployment period.

The CCME guideline noted on the pH graph is a range by which to compare pH levels across Canada. It does not indicate the health of the brook. Due to the soil composition and natural geology of Newfoundland and Labrador, many of the brooks and waterways in the province have naturally lower pH ranges. Tributary to Gills Pond Brook hovered around the minimum guidelines throughout the deployment, while East Pond Brook remained below the minimum guide throughout the majority of deployment.

Stage Level data is raw data. This data has not been corrected. Corrected and finalized data, can be retrieved from the Environment Climate Change Canada, Water Survey of Canada website <https://www.canada.ca/en/environment-climate-change/services/water-overview/quantity/monitoring/survey.html>

Table 4. Statistical pH data for Tributary to Gills Pond Brook and East Pond Brook for October 27, 2021 to May 22, 2022.

Station	Min	Max	Median	Mean
Tributary to Gills Pond Brook	5.50	7.50	6.63	6.59
East Pond Brook	5.35	6.72	6.25	6.25



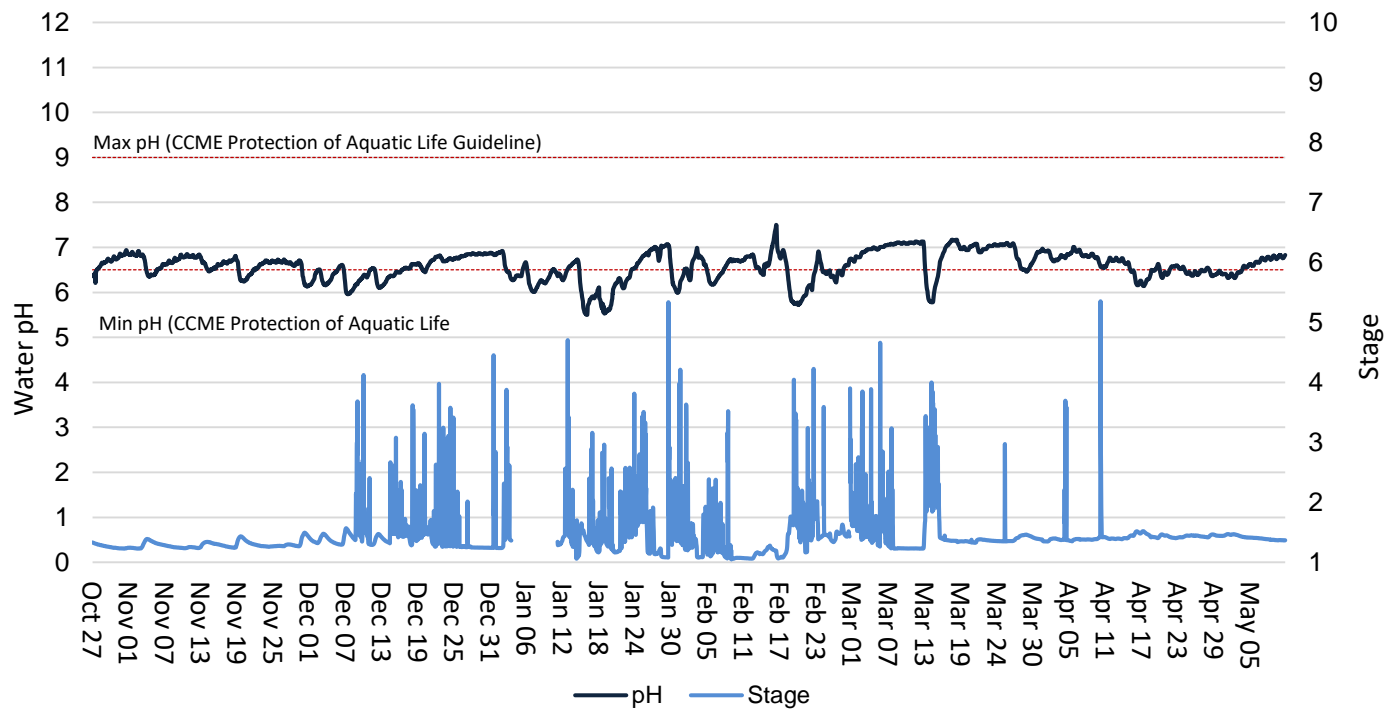


Figure 3 Water pH and Stage at Tributary to Gills Pond Brook.

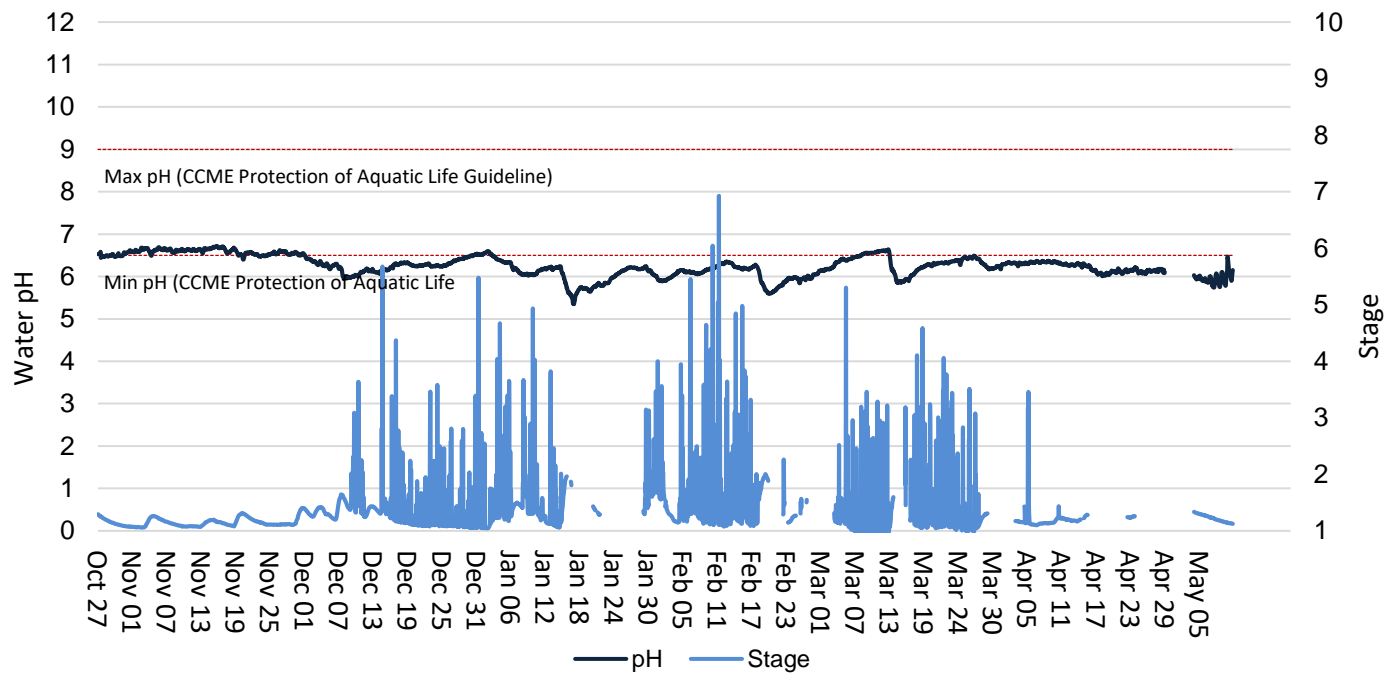


Figure 4. Water pH and Stage at East Pond Brook

### Specific Conductivity

Conductivity relates to the ability of an electric charge to pass through a solution. Conductivity is highly influenced by the concentration of dissolved ions in solution: distilled water has zero conductivity (infinite resistance), while salty solutions have high conductivity (low resistance). Specific Conductivity is corrected to 25°C to allow comparison across variable temperatures.

Conductivity generally decreased at Tributary to Gills Pond Brook during periods of increased stage, but there were a few instances of increased conductivity concurrent to stage increases. Conductivity at Tributary to Gill's Pond Brook ranged from 14.5  $\mu\text{S}/\text{cm}$  to 743.0  $\mu\text{S}/\text{cm}$ . (Figure 6).

Specific conductivity at East Pond Brook ranged from 6.0  $\mu\text{S}/\text{cm}$  to 29.8  $\mu\text{S}/\text{cm}$ , generally decreasing as water levels declined with minimal seasonal precipitation.

Stage Level data is raw data (Appendix II). This data has not been corrected. Corrected and finalized data may be retrieved from the Environment Climate Change Canada, Water Survey of Canada website <https://www.canada.ca/en/environment-climate-change/services/water-overview/quantity/monitoring/survey.html>

Table 5. Statistical conductivity data for Tributary to Gills Pond Brook and East Pond Brook for October 27, 2021 to May 22, 2022.

Station	Max	Min	Median	Mean
Tributary to Gills Pond Brook	743.0	14.5	163.7	219.6
East Pond Brook	29.8	6.0	21.0	20.9

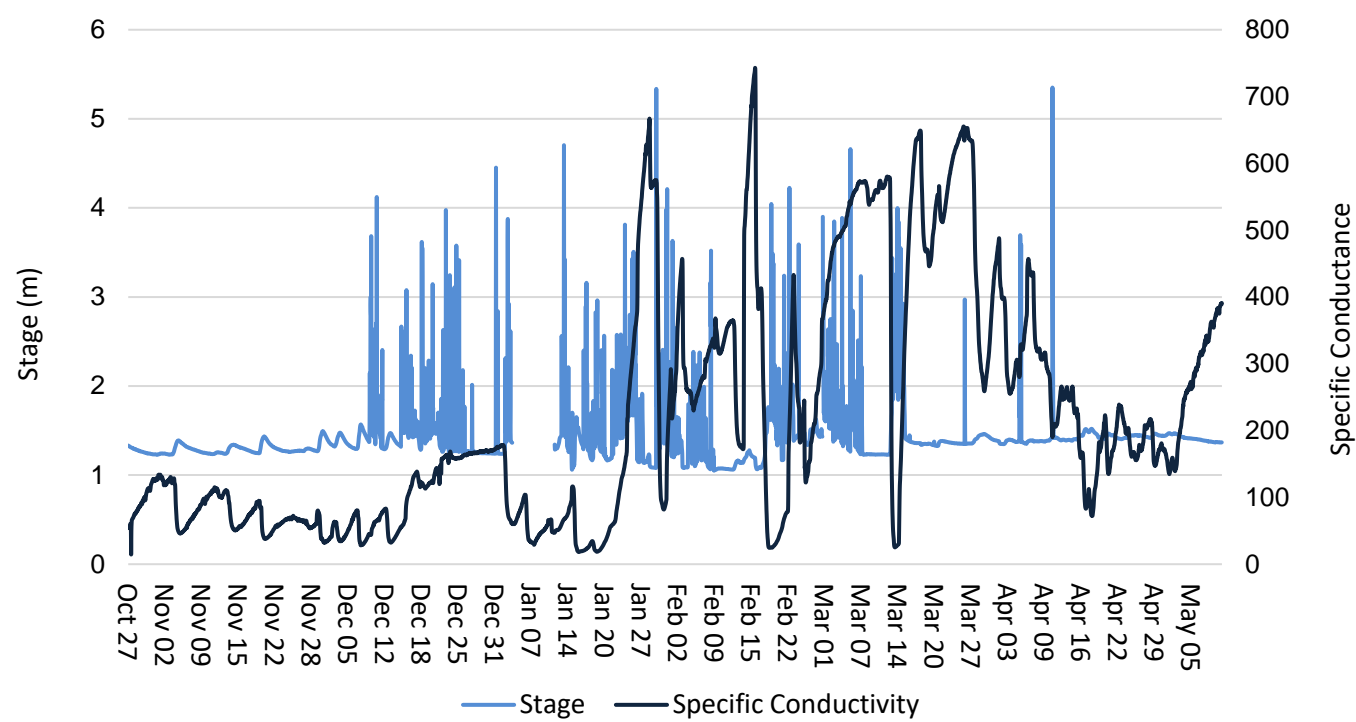


Figure 5. Specific conductivity values at Tributary to Gills Pond Brook.

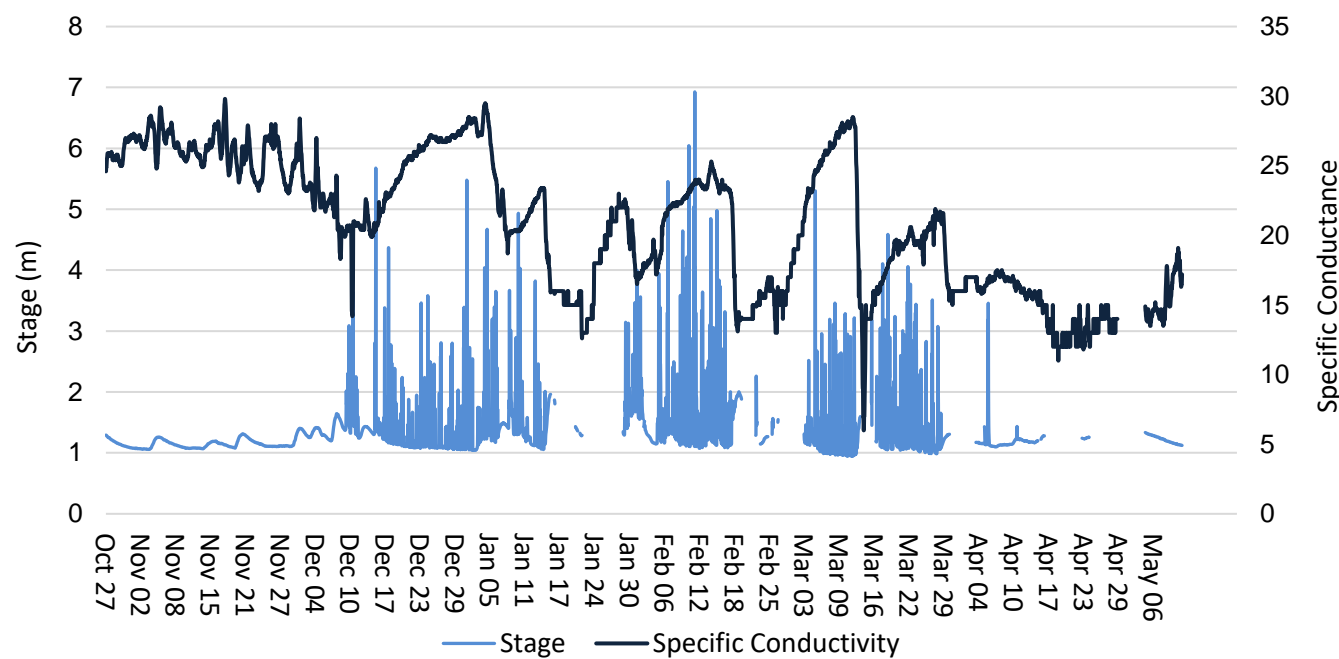


Figure 6. Specific conductivity values at East Pond Brook.

## Dissolved Oxygen

Dissolved oxygen is a metabolic requirement of aquatic plants and animals. The amount of dissolved oxygen in water depends on several factors, particularly temperature. The saturation of oxygen in water is inversely proportional to water temperature of the water body. Cooler water can hold more dissolved oxygen. Oxygen concentrations also tend to be higher in flowing water compared to still, lake environments or riverine pools. Low oxygen concentrations can give an indication of excessive decomposition of organic matter or the presence of oxidizing materials.

Tributary to Gill's Pond Brook had a minimum dissolved oxygen concentration of 9.63 mg/L, and it had a maximum dissolved oxygen concentration of 13.46 mg/L. At East Pond brook below East Pond, the dissolved oxygen concentration data ranged from 8.73 mg/L to 12.95 mg/L.

Dissolved oxygen at both stations remained above the CCME guidelines for the protection of early life stages and other life stages throughout deployment. As temperatures warmed in the spring, DO values dropped at both sites, following the expected seasonal pattern (Figure 7 & 8).

Table 6. Statistical Dissolved Oxygen data for Tributary to Gills Pond Brook and East Pond Brook for October 27, 2021 to May 22, 2022.

Station	Max	Min	Median	Mean
Dissolved Oxygen (mg/L)				
Tributary to Gills Pond Brook	13.46	9.63	12.55	12.40
East Pond Brook	12.95	8.73	11.95	11.81
Dissolved Oxygen (%Sat)				
Tributary to Gills Pond Brook	95.2	78.0	87.4	87.4
East Pond Brook	96.1	76.6	83.8	84.2

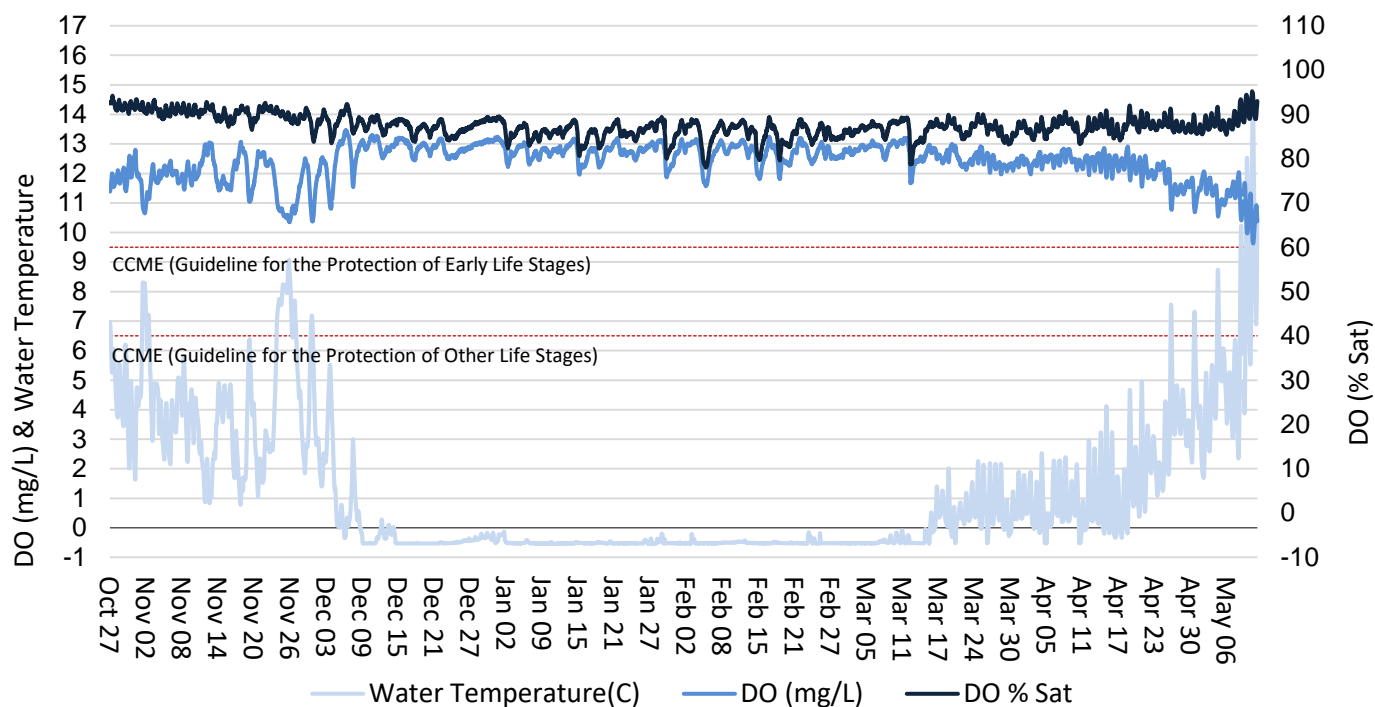


Figure 7. Dissolved oxygen (mg/L & % Sat) and water temperature (°C) values at Tributary to Gills Pond Brook.

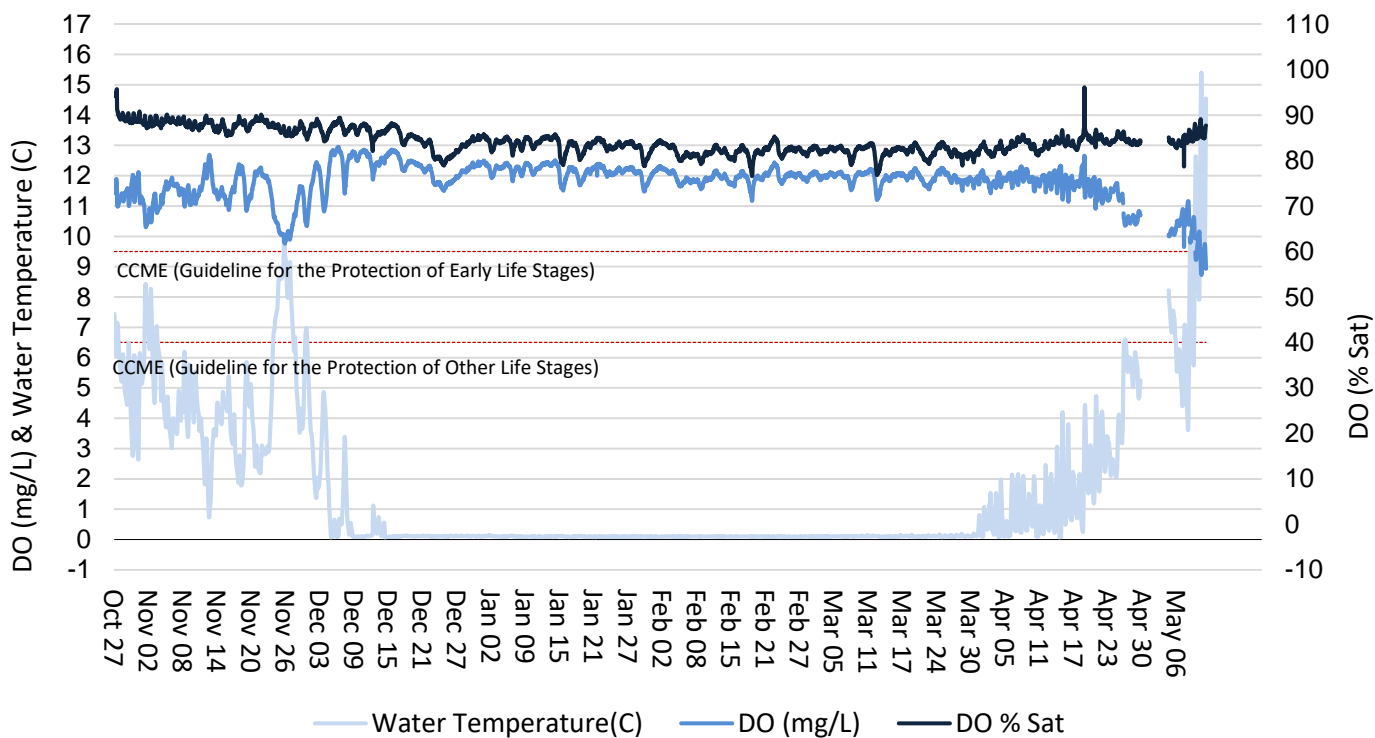


Figure 8 Dissolved oxygen (mg/L & % Sat) and water temperature (°C) values at East Pond Brook

## Turbidity

Turbid or cloudy water is typically caused by fine suspended solids, such as silt, clay, or organic material. Consistently high levels of turbidity tend to block sunlight penetration into a waterbody, harming plant and phytoplankton growth. High turbidity can also damage the delicate respiratory organs of aquatic animals and sediment can cover critical spawning areas.

Turbidity levels are generally low at Tributary to Gills Pond Brook and are influenced by precipitation and associated runoff as well as effluent discharges. Turbidity levels at East Pond Brook during this deployment were also low, with a few fluctuations associated with high stage events.

Stage Level data is raw data. This data has not been corrected. Corrected and finalized data may be retrieved from the Environment Climate Change Canada, Water Survey of Canada website <https://www.canada.ca/en/environment-climate-change/services/water-overview/quantity/monitoring/survey.html>

Table 7. Statistical turbidity data for Tributary to Gills Pond Brook and East Pond Brook for October 27, 2021 to May 22, 2022.

Station	Max	Min	Median	Mean
Tributary to Gills Pond Brook	930	0	0	4.1
East Pond Brook	2768	0	0	7.1

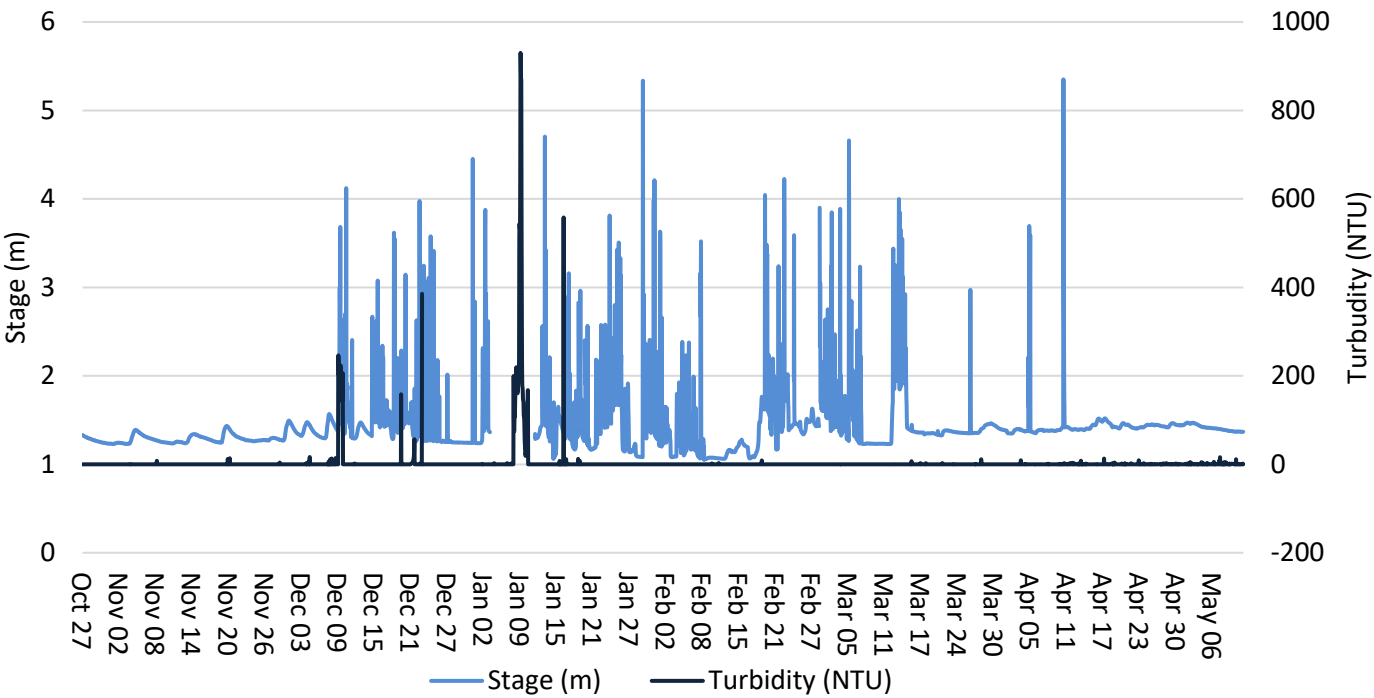


Figure 9. Turbidity (NTU) values at Tributary to Gills Pond Brook.

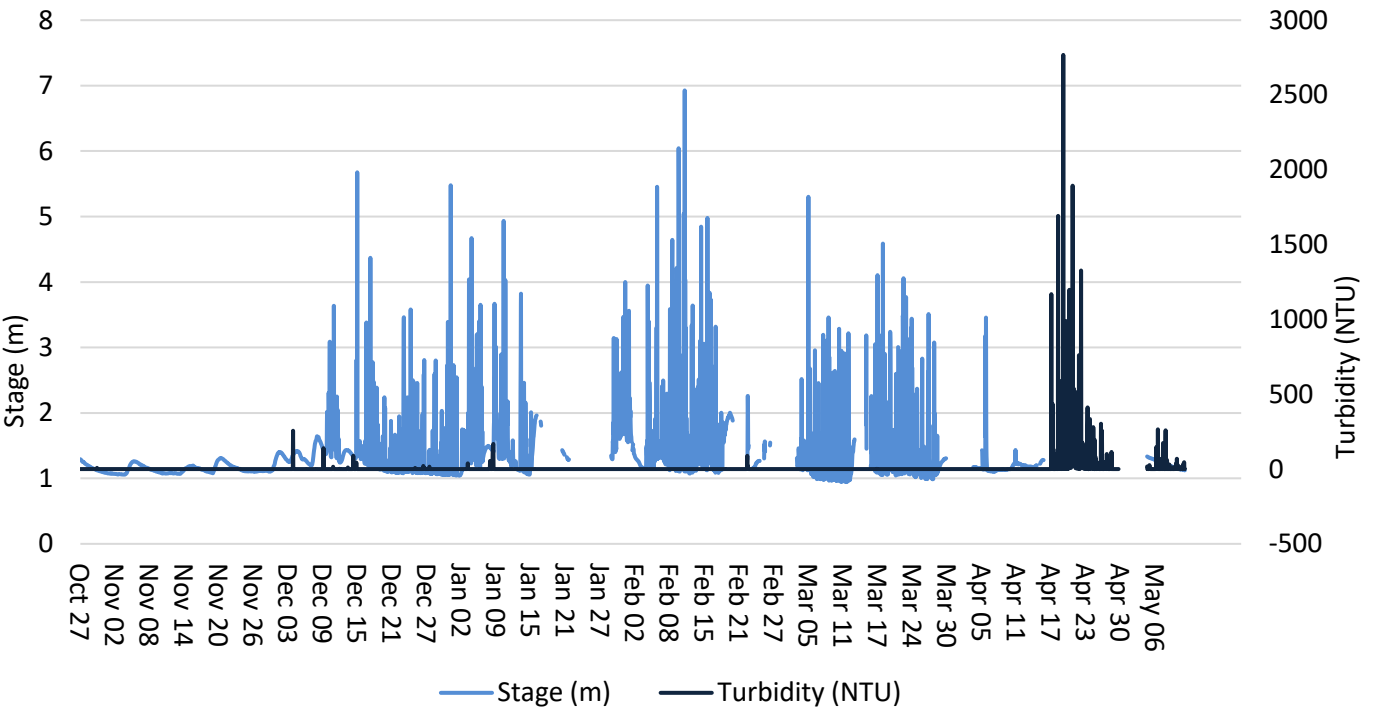


Figure 10. Turbidity (NTU) values at East Pond Brook.

### Stage and Total Precipitation

Figure 11, below, shows daily total precipitation data from Millers Town weather station and the daily average stage.

Please note that the stage data in this report is raw data. It has not been corrected for backwater effect. WSC is responsible for QA/QC of water quantity data. Corrected data can be obtained upon request to WSC.

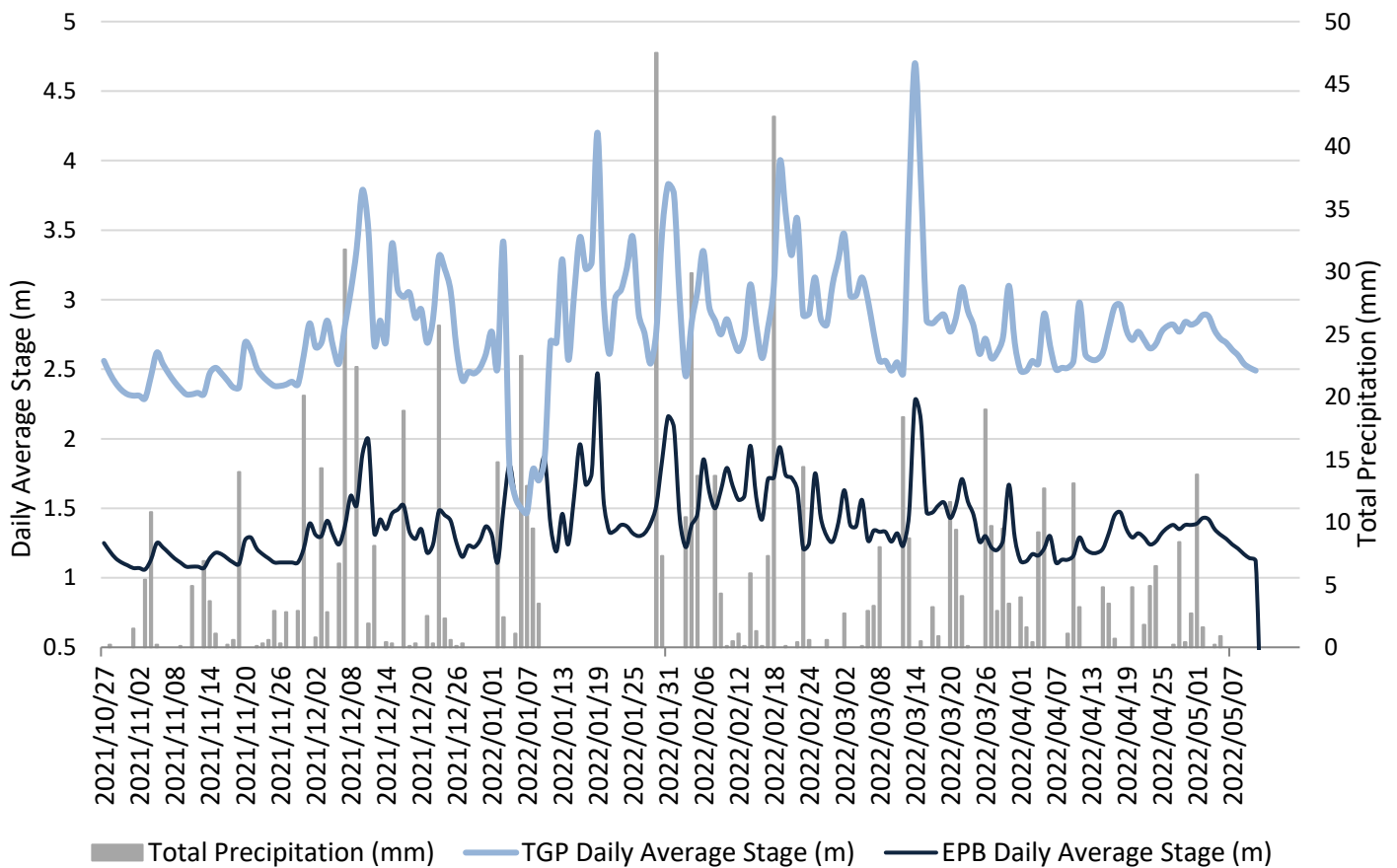


Figure 11 Daily average stage values (m) from Tributary to Gills Pond and East Pond Brook and daily total precipitation values (mm) from Millertown.