

Environmental Assessment Registration Document

Long Harbour Quarry - Anytime Heavy Haul Quarry Referral 71113280

Submitted to:

Minister of Environment and Climate Change

P.O. Box 8700

St. John's, NL A1B 4J6

Attention: Director of Environmental Assessment

Prepared By:

Anytime Heavy Haul Ltd.

P.O. Box 909

Mount Pearl, NL A1N 3C8

(709)-745-5904

cso@farrells.ca

March 2025

Contents

List of Figures	2
1.0 Name of Undertaking.....	3
2.0 Proponent	3
2.1 Name of Corporate Body	3
2.2 Address.....	3
2.3 Chief Executive Officer	3
2.4 Principal Contact Person	3
3.0 The Undertaking.....	4
3.1 Nature of the Undertaking.....	4
3.2 Purpose of Undertaking	4
4.0 Description of the Undertaking.....	5
4.1 Geographic Location	5
4.2 Physical Features	6
4.2.1 Vegetation	7
4.2.2 Wildlife	7
4.3 Construction of Quarry	7
4.4 Operation of Quarry.....	8
4.4.1 Occupations	9
4.4.2 Decommissioning and Rehabilitation.....	10
4.5 Potential Sources of Pollution	10
4.5.1 Noise Pollution	10
4.5.2 Air Pollution.....	11
4.5.3 Fuel.....	11
4.5.4 Visibility.....	11
4.5.5 Runoff.....	15
4.5.6 Garbage Disposal	15
5.0 Potential Resource Conflicts	15
6.0 Regulations and Approvals.....	16
7.0 Schedule.....	16
8.0 Conclusion.....	17
APPENDIX A – Site Location Detail.....	18

List of Figures

Figure 1: Proposed Site Location Near Long Harbour, Newfoundland	6
Figure 2: Site Plan for Project.....	9
Figure 3: View of the Proposed Site from Route 202 & 101 Intersection, Aerial View.....	12
Figure 4: View of the Quarry from Long Harbour Lodge	13
Figure 5: Frontal View of the Quarry from Route 101, Access Road Location	14
Figure 6: Site Location for New Quarry and Access Road	19
Figure 7: Proposed Location Overview	20

1.0 Name of Undertaking

Long Harbour Quarry

2.0 Proponent

2.1 Name of Corporate Body

Anytime Heavy Haul Ltd

2.2 Mailing Address

P.O. Box 909

Mount Pearl, NL

A1N 3C8

2.3 Chief Executive Officer

William Farrell (Director)

2700 TCH

St. John's, NL

Tel: (709) 745-5904

Email: wfarrell@farrells.ca

2.4 Principal Contact Person

Justin Constantine B.Eng

P.O. Box 909

Mount Pearl, NL

A1N 3C8

Tel: (709) 745-5904

Email: engineering@farrells.ca

3.0 The Undertaking

3.1 Nature of the Undertaking

Anytime Heavy Haul Ltd (AHH) is applying for a quarry located in Long Harbour, Newfoundland. The desired area is approximately 5.10 ha with rough dimensions of 240m by 205m. This undertaking will be developed under quarry permit 71113280 for sourcing roadway materials which will be used for roadway projects throughout Newfoundland.

There should be no resource conflicts anticipated, as the proposed location was already used and assessed for previous quarry operations. If the quarry is unsuitable for the needs of Anytime Heavy Haul Ltd, then they will proceed with decommissioning and rehabilitating the quarry. This could include examples like lack of material availability, or lack of material quality. See Figure 2 for the site plan.

3.2 Purpose of Undertaking

Anytime Heavy Haul is a well-established construction company that currently has a Quarry, Office, laydown yard, Aggregate Rock Crusher and Asphalt Plant near Paddy's Pond. The materials from the proposed Long Harbour site, will be excavated and processed to be suitable in Asphalt and aggregate sources for use and sale across the province. As the production life of the existing quarry is reaching an end, Anytime Heavy Haul Ltd is looking into other options, to ensure continuation of quality work and products for the years to come. Anytime Heavy Haul Ltd completes various forms of work throughout the year, such as heavy civil projects, highway construction, and redevelopment, along with commercial and residential paving. Once approved, the aggregated equipment will be moved to the site, which will be set up with a functioning scale house, to aid in the process of sales and tracking for government jobs. Thus, having all necessary operational equipment on site will lower our carbon footprint, as everything can be processed and shipped from one area.

The list of equipment expected to be on-site will vary, as this depends on any civil projects received in the area. But the basis of the quarry will be raw material extraction (see next paragraph for list).

Equipment will include:

Loaders, Tandem Tandem dump trucks, tractor trailers with float trailers (equipment mobilization) and live bottom/belly dump trailers (for material hauling), a scale house to track sales, rock crusher for materials processing and stockpiling, and light-duty pick-ups.

Some of the Raw materials expected to be processed are blending sand, winter sand, Class A, Class B, ¼ inch stone, ½ inch stone, ¾ inch stone, 1.5-inch stone, 3-inch minus, 4-inch minus, blast rock and armour stone.

4.0 Description of the Undertaking

4.1 Geographic Location

The undertaking is located approximately 3km down Route 101 (Argentia Access Rd) off Route 202 in Long Harbour. The coordinates are (47°25'33.70"N, 53°45'3.67"W). There is a pre-existing access road, and the land for the quarry itself is already prepared for operation as it was once used as a quarry.

Therefore, any work needed to get the quarry site operational will be very minimally invasive. The quarry development will provide an amplitude of raw material to be processed into suitable aggregates for use in construction and has the potential to supply sufficient material for years to come. The application area lies within the Long Harbour-Mount Arlington Heights Municipality Boundary. It lies within the Maritime Barrens Ecoregion of Newfoundland, characterized by cool summers and short, moderate winters. Mean annual temperatures of 5.5° Celsius. The mean annual precipitation ranges from 1200mm to 1600mm. The elevation increases from sea level to about 250 meters above sea level, consisting of a blend of sedimentary rocks and granite.

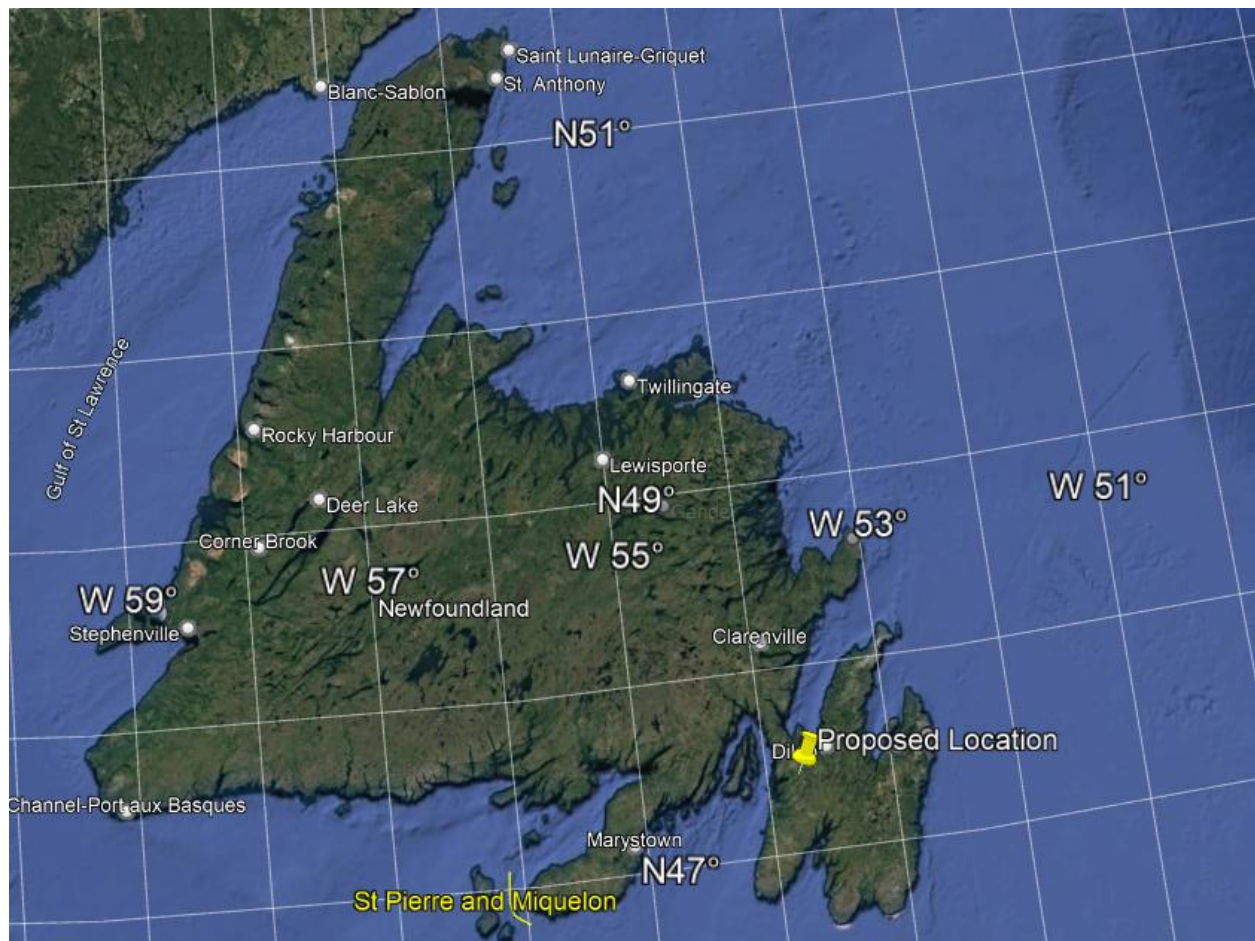


Figure 1: Proposed Site Location Near Long Harbour, Newfoundland

4.2 Physical Features

The proposed location of the quarry is located in a densely wooded area, with a moderate slope, from the highest elevation of 512 ft in the Northwestern corner to the lowest elevation of 436ft in the Southwestern corner. There is an unnamed pond to the North of the quarry, approximately 80m from the boundary at all points, this water body will not be impacted by quarry operations. The rest of the surrounding area is forest. The front portion of the quarry area, between the proposed and Route 101 is currently under a Quarry permit for Provincial Paving, Permit number 149178 which is good until 3/3/2025. About 1.3km Southeast of the proposed location, Pennecon Heavy Civil Ltd has a Quarry,

Permit number 149610, good until 7/2/2025. Roughly 400m to the East, there seems to be Crown Titled land to Vale Inco Newfoundland & Labrador Ltd.

4.2.1 Vegetation

Balsam fir is the primary tree species in the area. The occurrence of fires has resulted in the transformation of fir forests into scattered populations of black spruce, balsam fir, tamarack, and various shrubs, as well as moss and lichens. Kalmia and sphagnum moss thrive in blanket and flat bog environments. The barren land consists of thick low-lying bushes and shrubs such as Dogberry, Larch, Partridgeberry, Blueberry, and Crowberry.

4.2.2 Wildlife

Conditions are suitable for black bears, red foxes, caribou, moose, and lynx. Other Mammals to include would be the Common Vole and Shrews.

Several Migratory birds have been known to frequent the area including Canadian Geese, Wood Duck, Blue-winged teal, Black Duck, Pintail, Eider, Goldeneye, Merganser, Seagulls, Crows, Bald Eagle, Spruce Grouse, Ruffed Grouse, Rock and Willow Ptarmigan. The only known species at this time in risk of endangerment in this area is the Little Brown Bat. There will be a temporary loss of habitat for some of the native wildlife in the area but upon decommissioning and the rehabilitation of the quarry's land, their habitat will be slowly regenerated.

4.3 Construction of Quarry

Once released from Environmental Assessment, Anytime Heavy Haul Ltd. will start transporting equipment to the site in preparation for the crusher delivery. Some granular may need to be laid to smoothen the surface for the crusher, but again as the land was already used as a quarry site, any operations to set up the site will be light and minimally invasive. If there is any need for tree or organic materials removal, a Commercial Cutting Permit will be obtained from the Department of Fisheries, Forestry and Agriculture prior to any work. All usable timber will be salvaged, and any organic materials

will be stockpiled to create berms within the quarry boundaries, which can be used for reclamation in the future. All extraction activities will be in accordance with the Occupational Health and Safety Act, and that of the Quarry Materials Act.

The development and construction of the land for the proposed quarry area will consist of the following immediately after approval of the Quarry Permit:

- a) Survey the proposed land.
- b) Clearing of trees and vegetation.
- c) Stripping soil and other loose material into a stockpile for rehabilitation upon closure of the quarry.
- d) Installation and calibration of weight scales.
- e) Installation of aggregate crusher/screeners.
- f) Development of settling ponds and sediment control to reduce contaminating runoff.
- g) Various quarry operations: excavation, drilling blasting, crushing and stockpiling of materials.
- h) Transportation of crushed materials to the client.

The completion of the quarry construction will take approximately 1 week.

4.4 Operation of Quarry

When in operation sections of the quarry will be grubbed off and all loose material will be removed exposing the solid rock, drilling and then a blast will occur on said exposed rock. Only small portions of the quarry will be drilled and blasted at a time, enough to crush for the desired amount, if they need 10,000 cubic meters of material for the crusher, they'll only blast the 10 000 cubic meters required. The annual production for this quarry is expected to be approximately 50,000 cubic meters, this material will be used for sale to other contractors and Anytime Heavy Haul Ltd. heavy civil projects on the Avalon.

Figure 2 below shows an approximate site plan for the quarry.

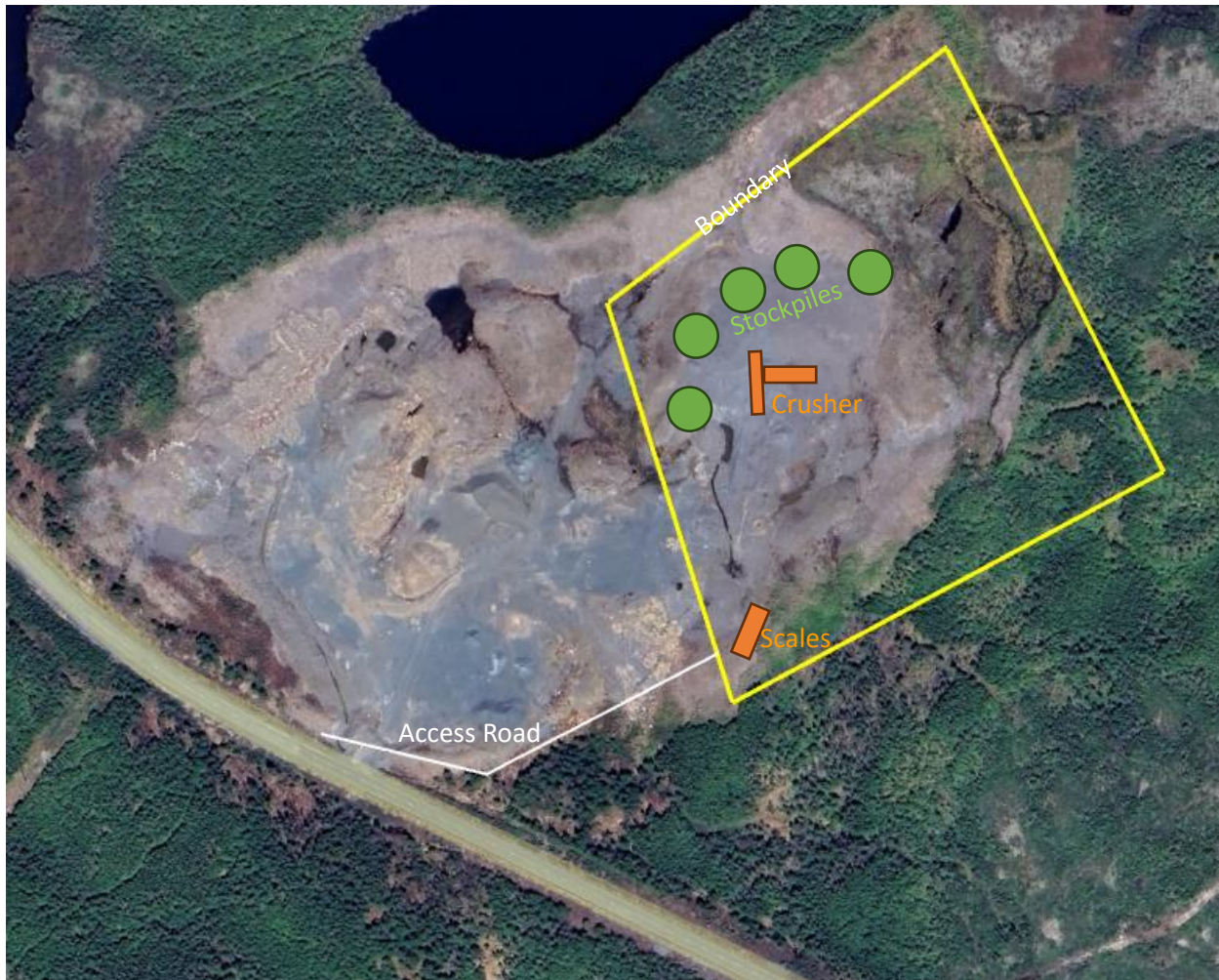


Figure 2: Site Plan for Project

4.4.1 Occupations

For this site to become operational both during construction and operation it will require approximately 10 full-time employees in various positions such as.

- Heavy Equipment Operators (73400)
- Heavy Equipment Mechanics (72401)
- Quarry Supervisor (82020)
- Laborers/Scale House Personnel (75100)

These positions will be hired based on job qualifications, education and relative work experience.

4.4.2 Decommissioning and Rehabilitation

At the end of the quarry's life, Anytime Heavy Haul Ltd. will decommission and rehabilitate the quarry area. We will ensure that the area will be sloped and graded in an acceptable manner with no areas for water to build up, and will utilize the stockpile of grubbed organic material from the quarry to cover all exposed areas. Once the area is covered in the organic material/topsoil the entire area will be covered in hydroseed to help with the regrowth of vegetation. It is anticipated that this will take approximately 1-2 weeks to fully decommission and rehabilitate the area. Once the excavated quarry area is rehabilitated, a natural berm on the access road will be made from some of the organic material used to cover the quarry to prevent access to the area. Once rehabilitation is complete, Anytime Heavy Haul Ltd will conclude a follow-up assessment of the rehabilitated land, to ensure no environmental problems arise. Examples include water build-ups or pooling, material slides, lack of vegetation growth etc. to ensure the rehabilitation process is effective. Anytime Heavy Haul Ltd. does not anticipate having to import materials to complete the rehabilitation of the quarry.

4.5 Potential Sources of Pollution

During the construction and operation of the quarry, various types of construction equipment will be utilized such as harvesting equipment, excavators, dump trucks, and bulldozers. These pieces of equipment represent potential noise and air pollution.

4.5.1 Noise Pollution

The development, extraction and processing of raw materials will require the use of heavy equipment and diesel-powered equipment. This should have a noise level very comparable to the existing quarries and industrial businesses surrounding the area. All equipment will be kept in good working order to prevent excessive noise, and all workers will have proper hearing protection while in the area. To help reduce noise levels from blasting, blast mats will be used to help mitigate the noise produced by this extraction method.

4.5.2 Air Pollution

During normal quarry operations, there is generally dust created which will be mitigated by filter screens on all crushing equipment, access roads to the quarry will be monitored closely and will be watered frequently to keep dust from the equipment travelling to a minimum. All equipment used in the quarry will have functioning emission control systems to reduce hydrocarbon air pollution.

4.5.3 Fuel

Diesel fuel will be mainly used to operate the equipment to develop the site and process the raw material. The fuel will be supplied by a petroleum company and will be delivered daily and only trained personnel will be refuelling. All heavy equipment on site will be in good working order with regular inspections to prevent spills and leaks. All fuel spills greater than 70 litres will be immediately reported to the Provincial Environmental Emergency Telephone Line and cleaned up.

4.5.4 Visibility

The proposed area is located approximately 3.0km from Route 202 (R202 and R101 Turn off). Elevation at the intersection is about 40m, while the Quarry sits at about 140m. There is a small mountain range blocking the view, as seen in Figure 3. The location is about 4.4km from Long Harbour Lodge, which is also blocked by a significant mountain range. This is great for the Quarry as it won't interfere with the town's scenery. See Figure 4. The topography and existing vegetation that surrounds the quarry will be utilized to its advantage and will be used as a natural barrier, where this is unsuitable, berms using the natural loose material on site that has to be removed to expose the underlying material will be piled strategically to be used as a visibility barrier.



Figure 3: View of the Proposed Site from Route 202 & 101 Intersection, Aerial View



Figure 4: View of the Quarry from Long Harbour Lodge



Figure 5: Frontal View of the Quarry from Route 101, Access Road Location

From the figures above we can see that this quarry will pose very little visual pollution to the surrounding area. The majority of the views are just of slivers of the quarry boundary which indicates that this site will be barely visible.

4.5.5 Runoff

While the quarry is in operation there is a potential for runoff, this will be mitigated by the usage of check dam's ditches and silt fence to reduce the number of fine particles eroding and polluting nearby water sources. These will be in place in areas where excessive runoff is flowing and in areas suggested by the Department of Environment and Climate Change. Where applicable, ditch runoff will be directed into vegetated areas for natural percolation and filtration. This will be a main concern during the clearing process, as the natural material will be disturbed causing changes in the percolation and flow of runoff. If a large footprint is developed, AHH will create a settling pond somewhere in the quarry to help suspend the sediments before releasing the water over the vegetation for natural percolation to occur.

4.5.6 Garbage Disposal

All forms of domestic and commercial waste will be compiled into appropriate storage bins to be collected and disposed of at Robin Hood Bay in St. John's, Newfoundland.

5.0 Potential Resource Conflicts

Potential resource conflicts during the operation of the quarry can include wildlife and residential woodcutting. These can be mitigated by proper signage and notification. Although wildlife encounters in the area are expected to be slim, AHH will follow the regulations in the Wildlife Act and all encounters with migratory birds will follow the Migratory Bird Conservation Act. This will ensure that all measures are taken to avoid accidental disturbances of the migratory birds and their breeding grounds.

Pedestrian conflict is not expected to cause any significant disturbances as there currently are no areas which are accessible to the public for hiking, and ATV riding. This area has been used as an industrial

area for the last number of years with no reported incidents of conflict, and there are no trail networks/paths that are going to be impacted by this development.

Domestic cutting can proceed in the area without issue, and access around the development area can occur.

The size of the development area being cleared will not cause any issues for the remaining forestry region, there is plenty of forest for woodcutters to have access to. AHH will also have signage installed informing people about the private property and that quarry operations are occurring.

6.0 Regulations and Approvals

This quarry development will be in coherence with the Department of Industry, Energy and Technology rules and regulations and of the Environmental Protection Act 2002. Anytime Heavy Haul Ltd. will also follow all regulations set out by the Quarry Materials Act and obtain the proper land use permit. A commercial cutting permit, an operating permit and an access permit will all be acquired from their respective departments before development begins.

Approval Required	Issuing Authority
Quarry Permit	Mineral Lands Division, Department of Industry, Energy and Technology
Operating Permit, Development Permit	Department of Fisheries, Forestry and Agriculture
Commercial Cutting Permit	Department of Fisheries, Forestry and Agriculture
Municipal Approval	Long Harbour-Mount Arlington Heights
Access Approval	Department of Transportation and Infrastructure

7.0 Schedule

This project will commence as soon as approval for the Quarry Permit and all other permits are received, with a tentative start date of April 1st, 2025, and full operation starting in the summer of 2025. This quarry will be in operation annually creating suitable aggregate until it is depleted of all usable resources.

Submission of Application – February 2025

Approval of Quarry – March 2025

Construction Begins – April 1st, 2025

Quarry becomes Operational – Mid-April 2025

8.0 Conclusion

Anytime Heavy Haul Ltd. strives to minimize the environmental impact that the quarry will have on the area while yielding the most usable product and ensuring the sustainability of the quarry area. All risk of contamination will be monitored closely and in case of spillage, emergency kits will be administered immediately to prevent any further damage from occurring. Any concerns or recommendations from department members will be taken into effect as well. This project will be fully funded by Anytime Heavy Haul Ltd.

APPENDIX A – Site Location Detail



Figure 6: Site Location for New Quarry and Access Road



Figure 7: Proposed Location Overview