

Real-Time Water Quality Deployment Report

Rattling Brook Network

November 19, 2025 to January 7, 2026



Government of Newfoundland & Labrador
Department of Environment, Conservation and
Climate Change
Water Resources Management Division
St. John's, NL, A1B 4J6 Canada

General

- Department of Environment, Conservation and Climate Change staff monitor the real-time web pages consistently.
- Hydrometric data included in this report is provisional and used only for illustrative purposes. Corrected and finalized data may be retrieved from the Water Survey of Canada website (https://wateroffice.ec.gc.ca/index_e.html)*.

Maintenance and Calibration of Instrument

- As part of the Quality Assurance and Quality Control protocol (QAQC), an assessment of the reliability of data recorded by an instrument is made at the beginning and end of the deployment period. The procedure is based on the approach used by the United States Geological Survey.
 - Upon deployment, a QA/QC Sonde is temporarily deployed *in situ*, adjacent to the Field Sonde. Depending on the degree of difference between each parameter from the Field and QAQC sondes, a qualitative rank is assigned (See Table 1). The possible ranks, from most to least desirable, are: Excellent, Good, Fair, Marginal, and Poor. A grab sample is also taken for additional confirmation of conditions at deployment and to allow for future modelling studies.
 - At the end of a deployment period, a freshly cleaned and calibrated QAQC Sonde is placed *in situ*, adjacent to the Field Sonde. Values are compared between all parameters and differences are ranked for placement in Table 1.

Table 1: Qualitative QAQC Ranking

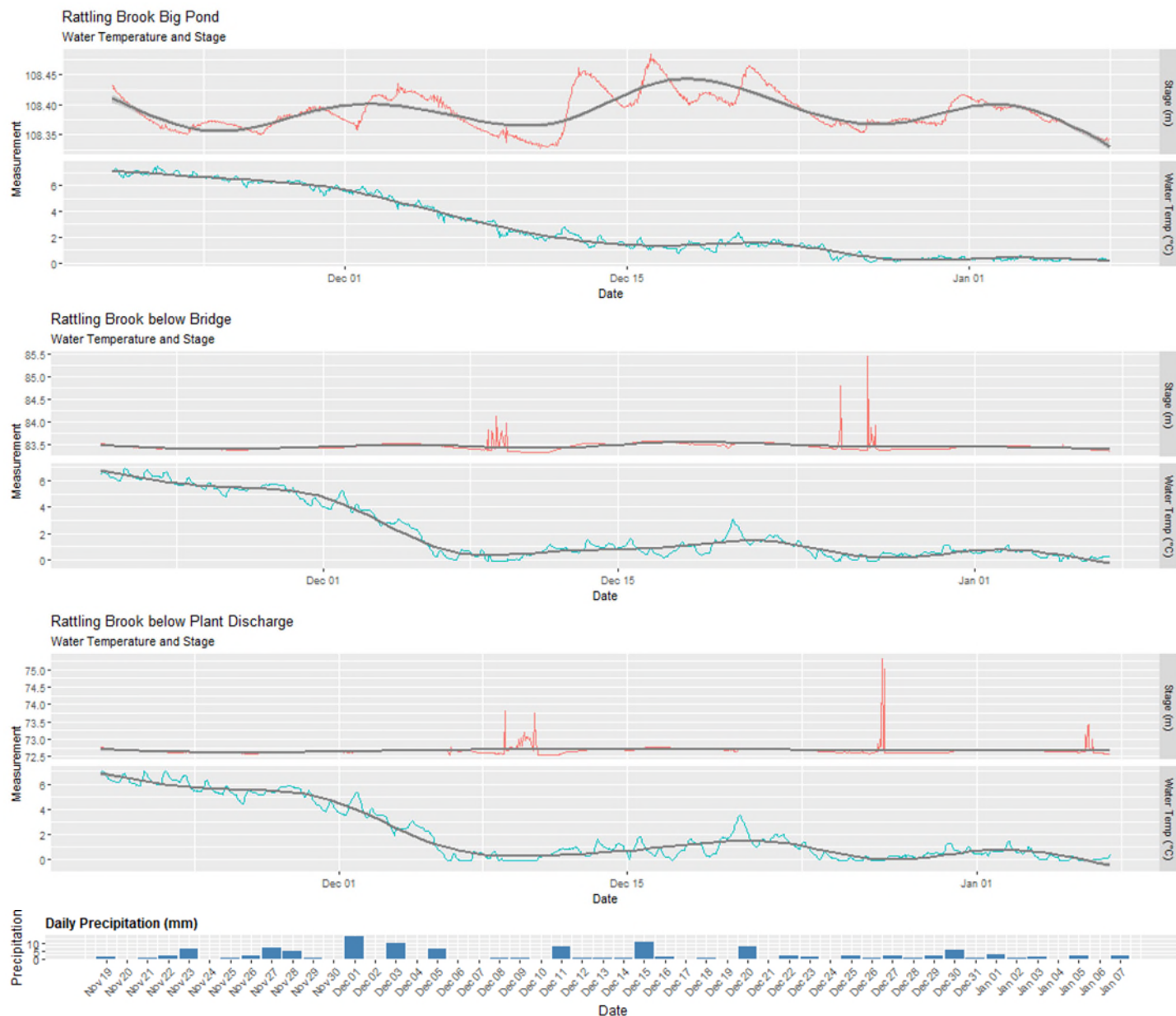
Station	Date	Action	Comparison Ranking				
			Temperature	pH	Conductivity	Dissolved Oxygen	Turbidity
Rattling Brook Big Pond	Nov 19	Deployment	Excellent	Excellent	Excellent	Excellent	Excellent
	Jan 7	Ongoing	N/A	N/A	N/A	N/A	N/A
Rattling Brook below Bridge	Nov 19	Deployment	Excellent	Excellent	Excellent	Excellent	Excellent
	Jan 7	Removal	Excellent	Excellent	Excellent	Excellent	Excellent
Rattling Brook below Plant Discharge	Nov 19	Deployment	Excellent	Good	Excellent	Excellent	Excellent
	Jan 7	Removal	Excellent	Good	Excellent	Good	Excellent

- Big Pond station is now deployed for the winter due to ice coverage.

- Data Interpretation

Temperature

Water Temperature is a major factor used to describe water quality. Temperature has major implications on both the ecology and chemistry of a water body, governing processes such as the metabolic rate of aquatic plants and animals and the degree of dissolved oxygen saturation.



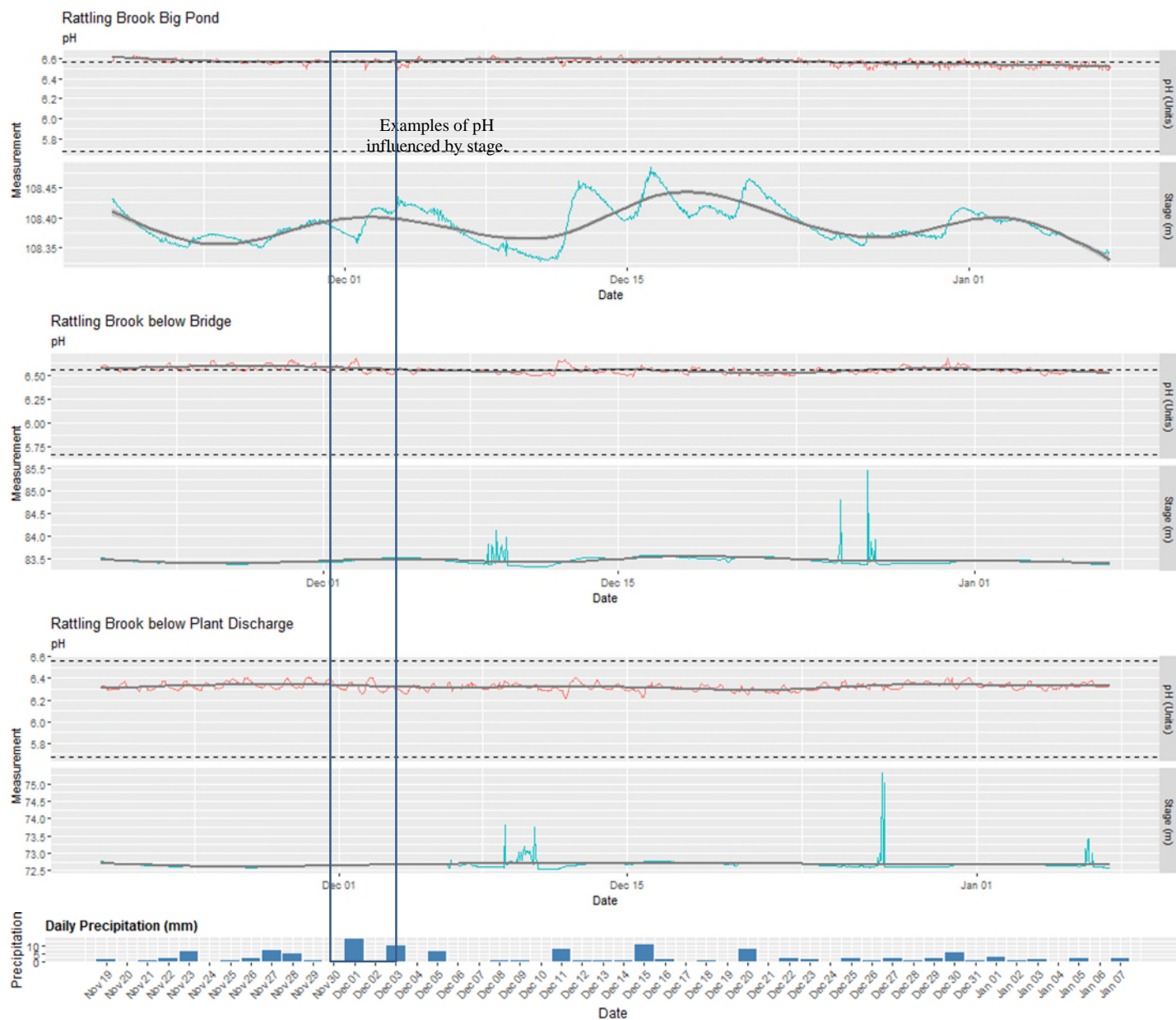
Station	Max	Min	Median	Mean
Big Pond	7.50	0.04	1.73	2.80
Below Bridge	6.91	-0.05	0.91	2.02
Below Plant Discharge	7.02	-0.11	0.88	2.04

- Trend lines indicate water temperatures decreasing before plateauing mid-deployment at all stations.

*All hydrometric data is provisional and is subject to correction. Please consult Water survey of Canada for finalized data and interpretation.

pH

pH is used to give an indication of the acidity or basicity of a solution. A pH of 7 denotes a neutral solution while lower values are acidic and higher values are basic. Technically, the pH of a solution indicates the availability of protons to react with molecules dissolved in water. Such reactions can affect how molecules function chemically and metabolically.



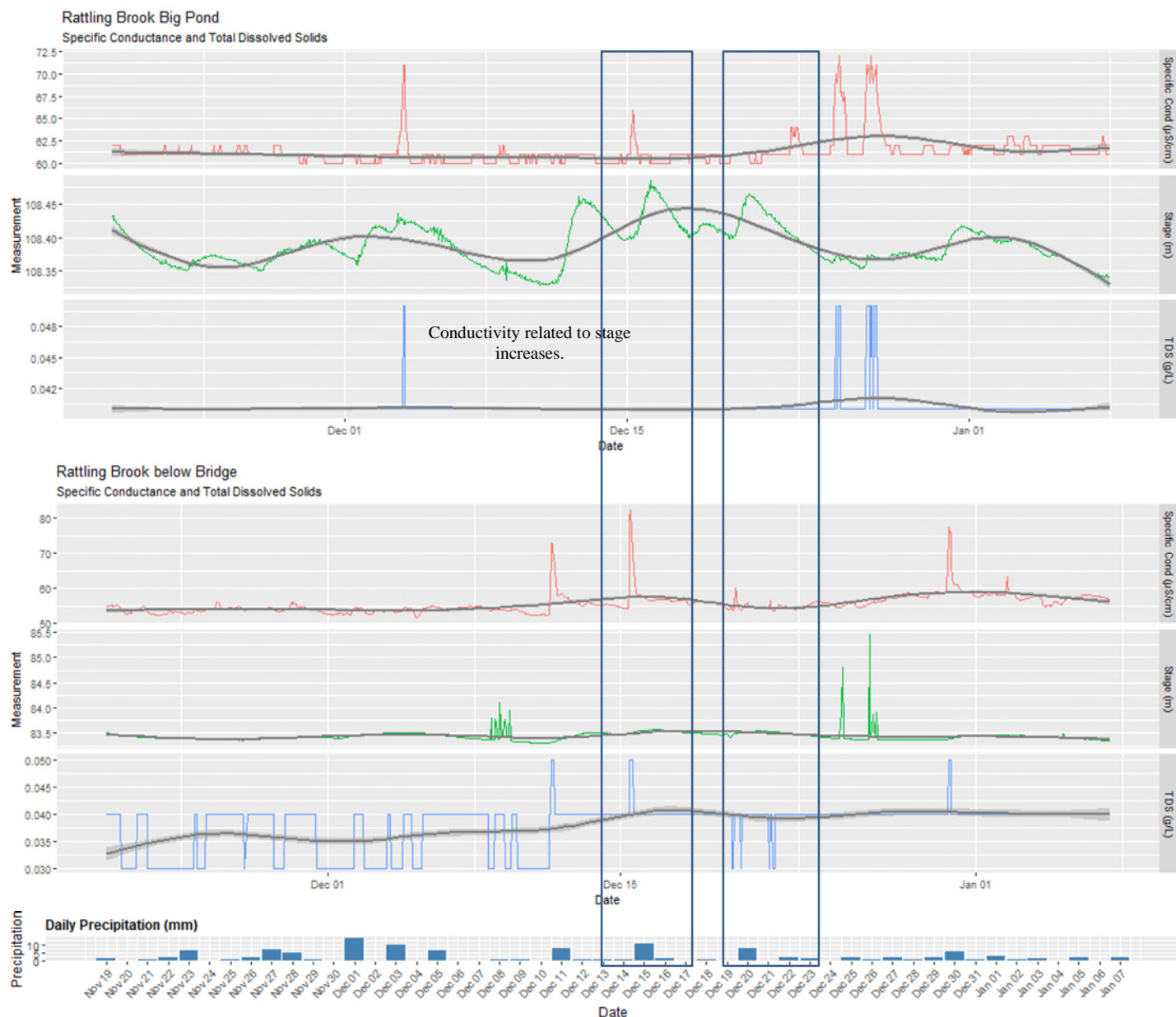
Station	Max	Min	Median	Mean
Big Pond	6.63	6.48	6.57	6.57
Below Bridge	6.67	6.48	6.55	6.55
Below Plant Discharge	6.42	6.22	6.32	6.32

- pH values remained steady, with the majority hovering around the upper site-specific guidelines (5.67-6.56 pH Units) for all three stations.

*All hydrometric data is provisional and is subject to correction. Please consult Water survey of Canada for finalized data and interpretation.

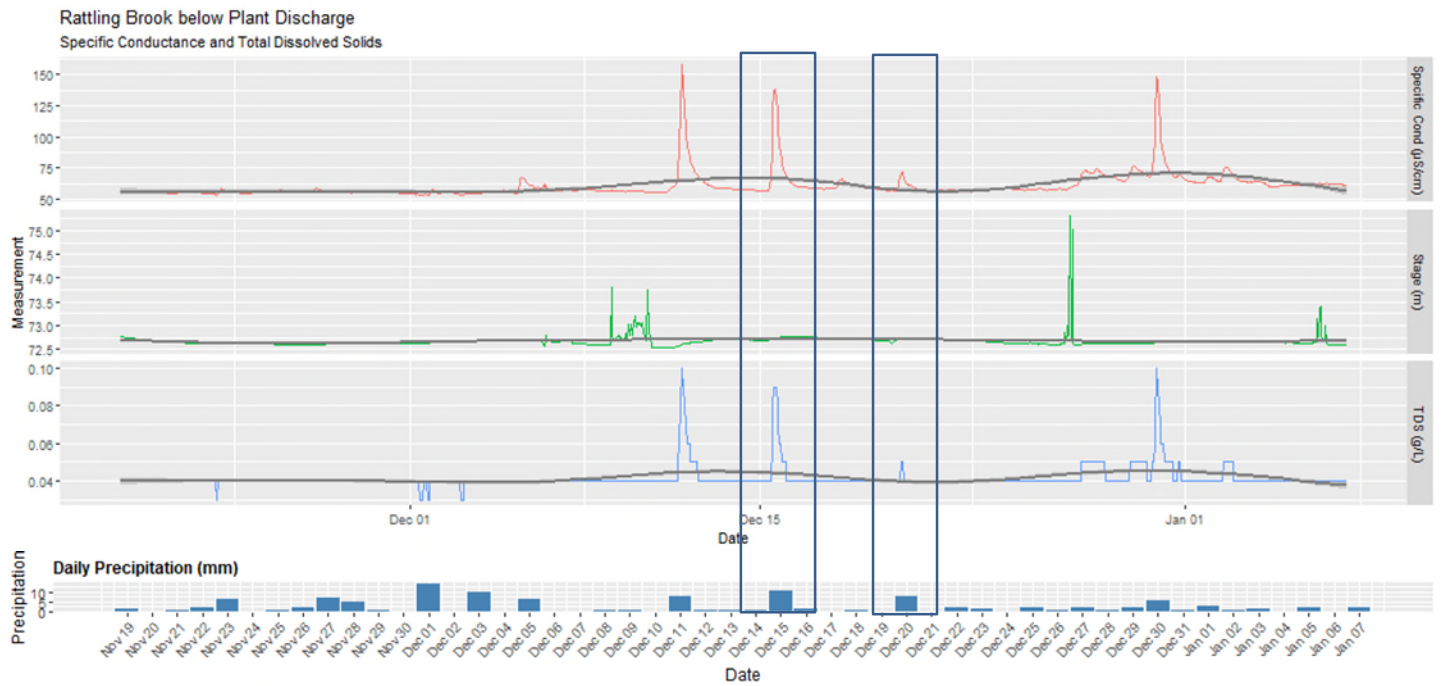
Specific Conductivity

Conductivity relates to the ease of passing an electric charge – or resistance – through a solution. Conductivity is highly influenced by the concentration of dissolved ions in solution: distilled water has zero conductivity (infinite resistance) while salty solutions have high conductivity (low resistance). Specific Conductivity is corrected to 25°C to allow comparison across variable temperatures.



*All hydrometric data is provisional and is subject to correction. Please consult Water survey of Canada for finalized data and interpretation.

Rattling Brook Network, Long Harbour, Newfoundland and Labrador



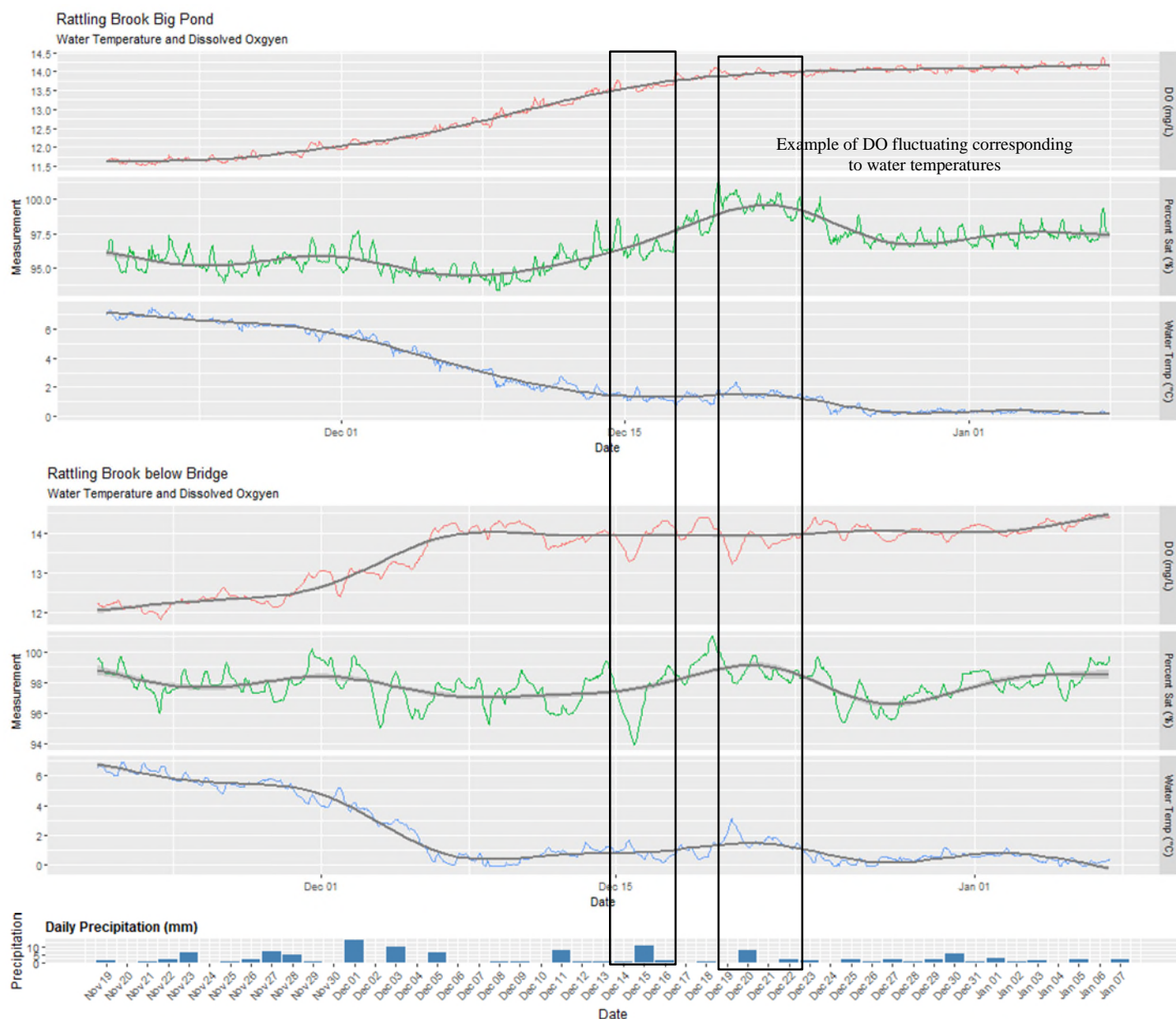
Station	Max	Min	Median	Mean
Big Pond	72.0	60.0	61.0	61.3
Below Bridge	82.5	51.5	54.9	55.5
Below Plant Discharge	158.2	53.1	57.5	60.9

- Specific conductivity was relatively stable at all stations with most peaks occurring during precipitation events.

*All hydrometric data is provisional and is subject to correction. Please consult Water survey of Canada for finalized data and interpretation.

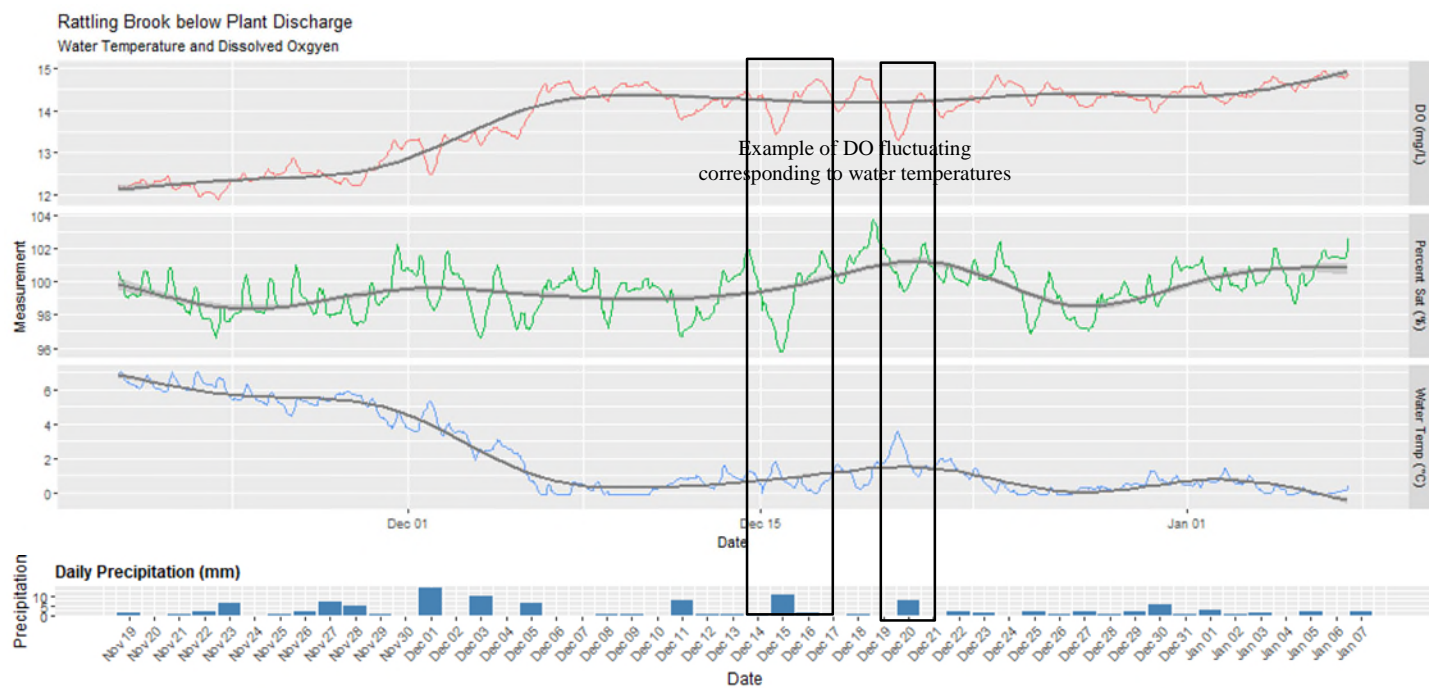
Dissolved Oxygen

Dissolved oxygen is a metabolic requirement of aquatic plants and animals. The concentration of oxygen in water depends on many factors, especially temperature – the saturation of oxygen in water is inversely proportional to water temperature. Oxygen concentrations also tend to be higher in flowing water compared to still, lake environments. Low oxygen concentrations can give an indication of excessive decomposition of organic matter or oxidation reactions.



*All hydrometric data is provisional and is subject to correction. Please consult Water survey of Canada for finalized data and interpretation.

Rattling Brook Network, Long Harbour, Newfoundland and Labrador



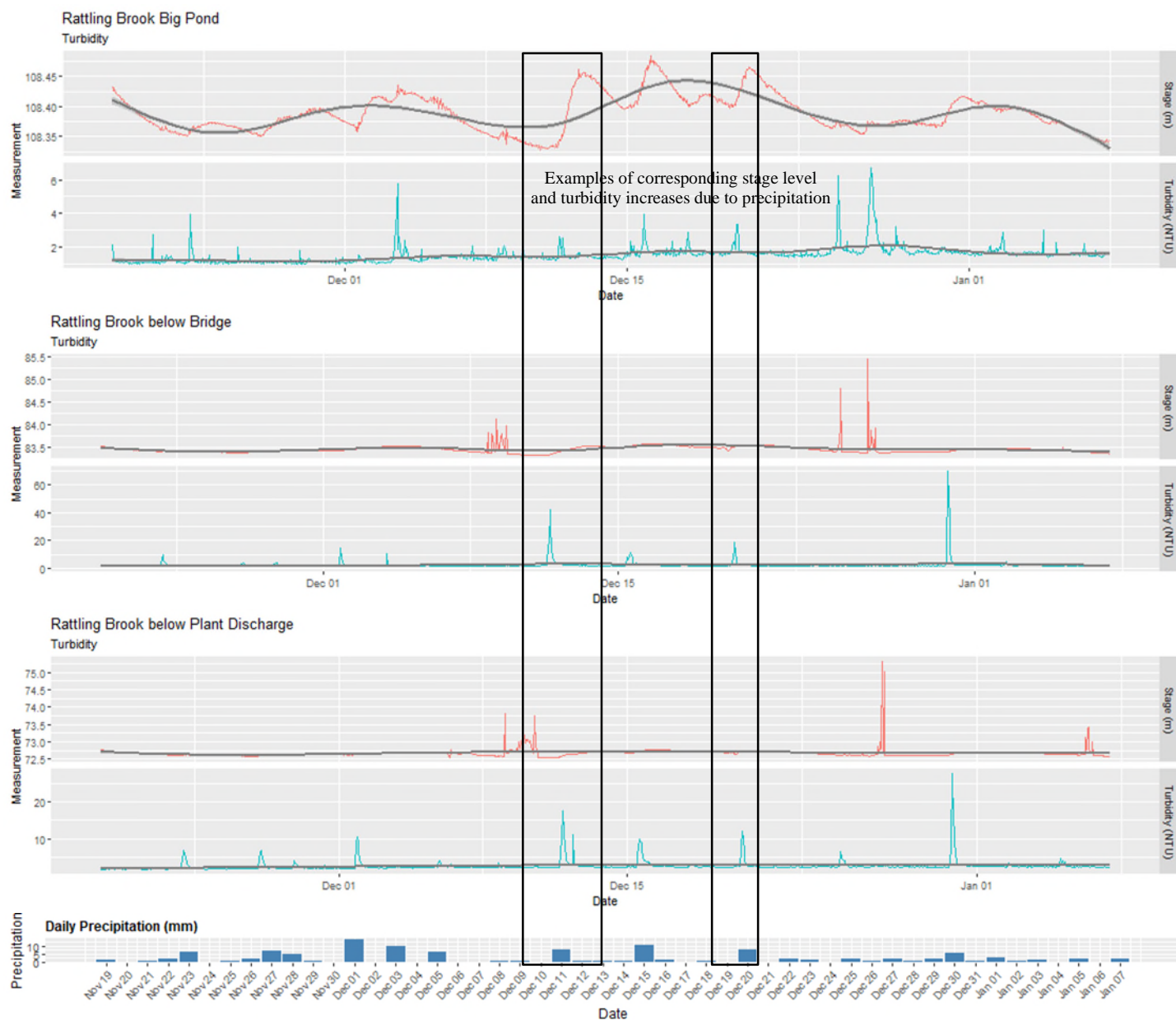
Station	Max	Min	Median	Mean
Big Pond	14.38	11.52	13.50	13.12
Below Bridge	14.47	11.81	13.91	13.56
Below Plant Discharge	14.93	11.90	14.21	13.80

- As observed at all stations, dissolved oxygen concentrations continued to increase as water temperatures decreased. All values remained above the CCME guidelines for early and other life stages of cold water biota.

*All hydrometric data is provisional and is subject to correction. Please consult Water survey of Canada for finalized data and interpretation.

Turbidity

Turbidity is typically caused by fine suspended solids such as silt, clay, or organic material. Consistently high levels of turbidity tend to block sunlight penetration into a waterbody, discouraging plant growth. High turbidity can also damage the delicate respiratory organs of aquatic animals and cover spawning areas.



Station	Max	Min	Median	Mean
Big Pond	6.7	1.0	1.5	1.5
Below Bridge	70.0	1.3	1.9	2.3
Below Plant Discharge	27.9	1.5	2.2	2.4

- Turbidity was stable at all three stations with exception of during significant precipitation events.

*All hydrometric data is provisional and is subject to correction. Please consult Water survey of Canada for finalized data and interpretation.

Appendix

