

March 20, 2019

Honourable Graham Letto
Minister of Municipal Affairs and Environment
P.O. Box 8700
St. John's, NL A1B 4J6

Dear Minister Letto:

**RE: Environmental Assessment Registration,
Quarry and Quarry Access Road Km 236, Route 510.
File Ref No. 200.20.2780 and 200.20.2781**

In accordance with the Environmental Protection Act, 2002, I am submitting for your review and consideration, an Environmental Assessment Registration for the proposed Quarry and Quarry Access Road Km 236, Route 510.

Attached is a digital copy plus 10 paper copies of the registration. The site is indicated on the attached Topographic Maps. The access road and quarry will be constructed through highway construction activities.

The quarry is to provide a rock source for widening and hard surfacing of R510, TLH from 160 km east of Happy Valley-Goose Bay to Cartwright Junction.

An Environmental Protection Plan and a Contractor Environmental Mitigation Plan will be produced to minimize environmental impacts.

We would like to complete the requirements of the Environmental Protection within 45 days of your receipt of this registration. The Department of Transportation and Works has a contract in place for this project and construction could commence early within the 2019 construction season.

.../2

If your officials have any questions, they should be directed to contact Murray Smith, Senior Engineer with our Labrador Engineering Division at 896-7850 or E-mail: murraysmith@gov.nl.ca.

Sincerely,



Kent Randell
Regional Engineer
Labrador Region

/ms

Attachments

cc: Cory Grandy, ADM (Transportation)
Bill Hillier, Director (Transportation)
Ken Hannaford, Environmental Senior Planner (Transportation)
Susan Squires, Director (Environmental Assessment Division)
Gerald Kennedy, Manager (Quarry Materials Division)
Jeff Bannister, Manager (Western Regional Lands Office)



**ENVIRONMENTAL ASSESSMENT REGISTRATION
DOCUMENT**

FOR THE

**CONSTRUCTION OF QUARRY AND QUARRY ACCESS
ROAD ROUTE 510 – KM 236, TRANS LABRADOR
HIGHWAY**

January 2019

Environmental Assessment Registration Document
Proposed Quarry and Quarry Access Road Route 510 – Km 236, TLH

PROPONENT:

(i) **Name of Corporate Body**

Department of Transportation and Works
Government of Newfoundland & Labrador

(ii) **Address**

6th Floor, Confederation Building (West Block)
St. John's, NF
A1B 4J6

(iii) **Chief Executive Officer**

Tracy King
Deputy Minister
729-3676

(iv) **Principal Contact for the Purpose of Environmental Assessment**

Murray Smith
Senior Engineer, Labrador Region
Engineering Division
896-7850

THE UNDERTAKING:

(i) **Name of the Undertaking**

Quarry and Quarry Access Road Route 510 – Km 236, Trans Labrador Highway

(ii) **Purpose / Rationale / Need for the Undertaking**

Environmental Assessment Registration Document
Proposed Quarry and Quarry Access Road Route 510 – Km 236, TLH

The purpose of this construction is to access and develop a rock quarry to be used to widen and hard surface R510, TLH from 160 km east of Happy Valley-Goose Bay to Cartwright Junction.

The general benefits of the Quarry are:

- Allowing Route 510 to be upgraded from an RLU 60 standard to an RCU 80 standard, improving the road standard reduces the risk of highway accidents and improving highway safety;
- Providing a safe, efficient and reliable road transportation route for area residents businesses and emergency vehicles;

Description of the Undertaking

(i) Geographic Location

The south end of the proposed access road intersects with Route 510 – Km 236, TLH and extends in a North West direction for 640 meters. The proposed quarry will be at the end of the access road and will measure 200 m x 200 m. Please see attached 1:10,000 and 1:50,000 Topographic Maps indicating the physical location with relation to Route 510, TLH. Also see attached 1:2,000,000 Topographic Map indicating the physical location with relation to communities in Labrador.

(ii) Physical Features

The principal feature of the quarry area is granite rock. The estimated size of the quarry would be 4 hectares, where sparse black spruce would be cleared, over burden removed and the drilling and blasting of granite rock.

The subgrade of the access road would be constructed in a fill situation. The fill would be obtained by accessing esker material excavated from within the TLH right-of-way. The access

road would be limited to an 8 m wide top and a 15 m cleared right-of-way. Clearing would involve cutting of sparse black spruce trees. Drainage pipes will be installed within the subgrade to convey storm water flows and snow melt, if needed.

(iii) **Construction**

Quarry development will be performed by contract forces. The construction phase will consist of clearing, over burden removal and site development, including access road construction. Construction activities are proposed to start May 2019.

Clearing and Over Burden Removal

Any merchantable timber removed during quarry development will be salvaged. All over burden will be set aside for future use such as quarry restoration. This process shall be performed in intervals as the quarry operations progress. The clearing and over burden removal shall be approximately 1 week, per interval.

Site Development

The proposed quarry site covers an area of 4 hectares. Initial construction activities will involve the removal of over burden to allow for the drilling and blasting of granite rock.

Potential Sources of Pollution during Construction

Sources of pollution during construction would be limited to the potential for hydrocarbon spillage from heavy equipment. Contractors will be advised of the environmental requirements for hydrocarbon spill reporting/clean-up and the necessity of strict compliance.

The potential for adverse environmental impacts during construction will be minimized. All construction activities will be undertaken in accordance with the environmental requirements of the Department of Transportation and Work's Specification Book for highway projects and in compliance with other environmental and related project documents. Where necessary, the results of environmental assessment field work as well as special mitigation measures will be

incorporated into project contract documents.

(iv) **Operation**

Typical drilling and blasting operations will be employed to blast rock at the proposed quarry. The operation will then involve the excavation and loading of blast rock at the working face of the quarry, crushing and transportation of the material for use on the Trans Labrador Highway.

The ground and facilities will be maintained according to environmental, health and safety standards and regulations. Equipment on site will include the following:

- Excavator (access road construction and loading at the working face)
- Tandem Tandem dump trucks (material transportation)
- Front End Loader (material handling)
- Mobile crusher

The quarry operation will typically run from May to October, in accordance with weather. The quarry will potentially operate for 3 years.

(v) **Occupations**

The various types of occupations anticipated for this project include:

- (a) Civil Engineers (NOC code – 2131);
- (b) Engineering Technicians (NOC code – 2231);
- (c) Environmental Planner (NOC code – 2153);
- (d) Environmental Scientist (NOC code – 2148);
- (e) Road Surveyors (NOC code – 2154);
- (f) Heavy Equipment Operators (NOC code – 7521);
- (g) Drillers and Blasters (NOC code – 7372);
- (h) Electricians (NOC code – 7242);
- (i) Carpenters (NOC code – 7204);
- (j) Heavy Equipment Mechanics (NOC code – 7312);

- (k) Labourers (NOC code – 7611);
- (l) Truck Drivers (NOC code – 7511);

(vi) **Project-related Documents and Assessments**

- **An Environmental Protection Plan (EPP)** will be prepared for the project and it will form part of the tender documents. The EPP will be a field usable document which will outline the environmental protection measures to be implemented during the construction phase. The EPP will clearly outline the location of any environmentally sensitive areas which are known and specify any restrictions on the timing of construction due to wildlife/fisheries/water resources/historic resources/aboriginal concerns, etc. Rehabilitation measures for disturbed areas of the project will be clearly outlined.
- **A Contractor Environmental Mitigation Plan (CEMP)** will be required from the contractor for department review and acceptance prior to the commencement of construction.
- Before construction begins, an Environmental Awareness Session will be held between the contractor and department officials to review and discuss the EPP and the CEMP.
- The need for a Historic Resources Assessment will be determined through consultation with the Cultural Heritage Division of the Department of Tourism, Culture and Recreation. If necessary, the appropriate assessment work will be undertaken. The EPP will outline reporting procedures and other mitigation actions to be taken in the event historical material is discovered during construction operations.
- A Vegetation Assessment will be conducted along the proposed route to determine the presence of rare or special plants within or adjacent to the proposed right-of-way. The Wildlife Division, DOE&C will be consulted.
- The project area will be assessed for the presence of raptor and migratory bird nests. Consultation will take place with both the provincial Wildlife Division and with the Canadian Wildlife Service, Environment Canada.

Environmental Assessment Registration Document
Proposed Quarry and Quarry Access Road Route 510 – Km 236, TLH

APPROVAL OF THE UNDERTAKING:

The following is a list of the permits, licences, approvals which may be necessary for this project:

MAJOR REGULATORY APPROVALS BY TYPE AND AGENCY

Type of Permit	Agency
1. Stream crossing approvals	Dept. of Fisheries & Oceans
2. Wood cutting permits	Dept. of Natural Resources
3. Fuel storage & handling	Government Service Centre
4. Solid waste disposal	Government Service Centre
5. Water supply/sewage disposal for construction camps (if applicable)	Government Service Centre
6. Borrow/quarry site approvals	Dept. of Natural Resources
7. Stream Crossing Approvals for temporary crossings required by the contractor	Dept. of Environment and Conservation & Dept. of Fisheries & Oceans
8. Water Resources Management Plan	Dept. of Municipal Affairs and Environment
9. Highway Access Approval	Dept. of Transportation & Works
10. Crown Lands Approval for Access Road	Dept. of Fisheries and Land Resources

Environmental Assessment Registration Document
Proposed Quarry and Quarry Access Road Route 510 – Km 236, TLH

SCHEDULE:

The Department of Transportation and Works would like to complete the requirements of the Environmental Assessment Act and seek approval for the project no later than 2019 03 31. A tender was in place in 2018 and construction to start May 2019.

FUNDING:

The project will be funded through the Building Canada Fund.

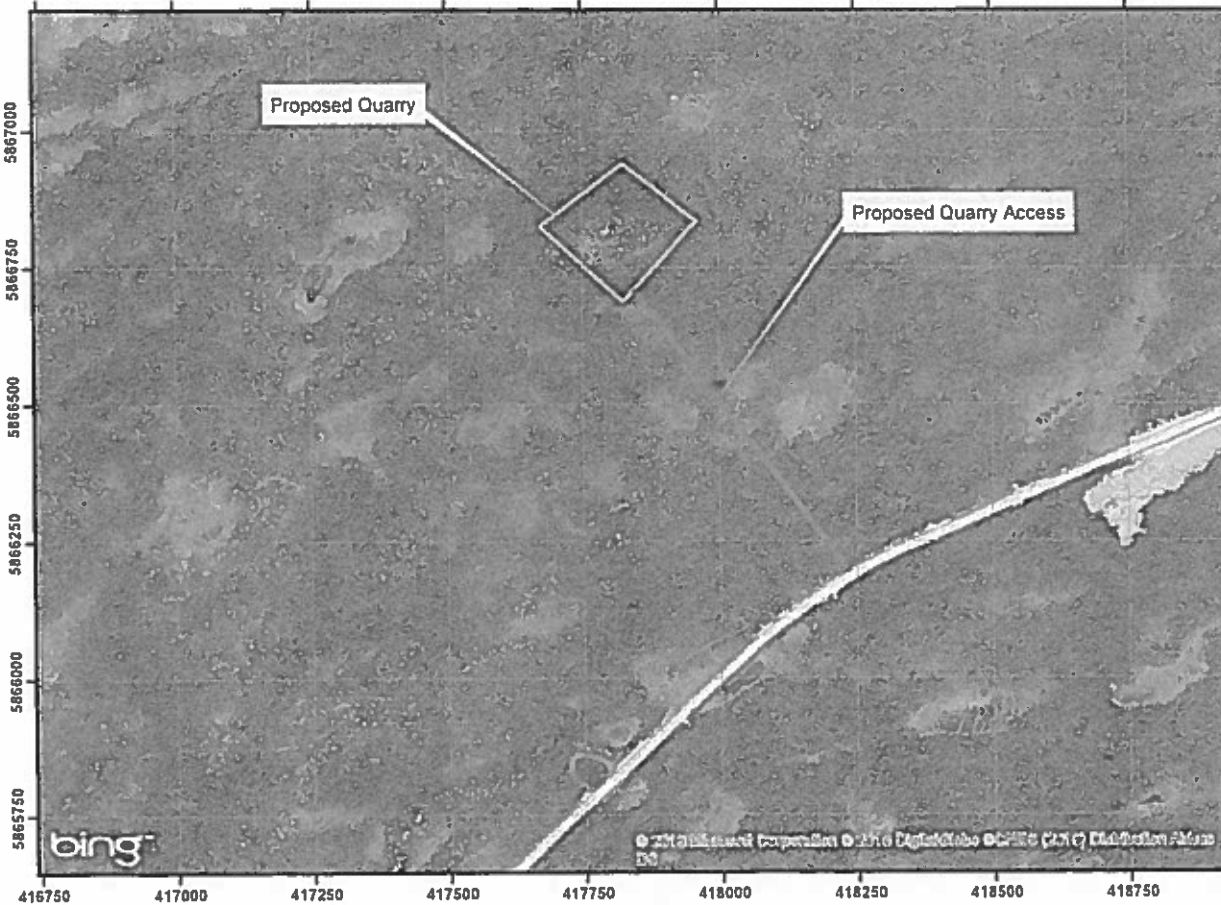
MMH 12/19
Date

for 
Tracy King
Deputy Minister

Government of Newfoundland & Labrador Department of Fisheries and Land Resources



416750 417000 417250 417500 417750 418000 418250 418500 418750



NOTE TO USERS

The information on this map was compiled from land surveys registered in the Crown Lands Registry.

Since the Registry does not contain information on all land ownership within the Province, the information depicted cannot be considered complete.

The boundary lines shown are intended to be used as an index to land titles issued by the Crown. The accuracy of the plot is not sufficient for measurement purposes and does not guarantee title.

Users finding any errors or omissions on this map sheet are asked to contact the Crown Lands Mapping Section, Herby Building, Regatta Lane, St. John's, Newfoundland.

Users finding error or omissions can contact the Crown Lands Mapping Section by telephone at 729-0061. Some titles may not be plotted due to Crown Lands volumes missing from the Crown Lands registry or not plotted due to insufficient survey information.

The User hereby undertakes and releases harmless the Minister, his officers, employees and agents from and against all claims, demands, liabilities, actions or cause of actions alleging any loss, injury, damages and matter including claims or demands for any violation of copyright or intellectual property arising out of any missing or incomplete Crown Land title and the Minister, his or her officers, employees and agents shall not be liable for any loss of profits or contracts or any other loss of any kind as a result.

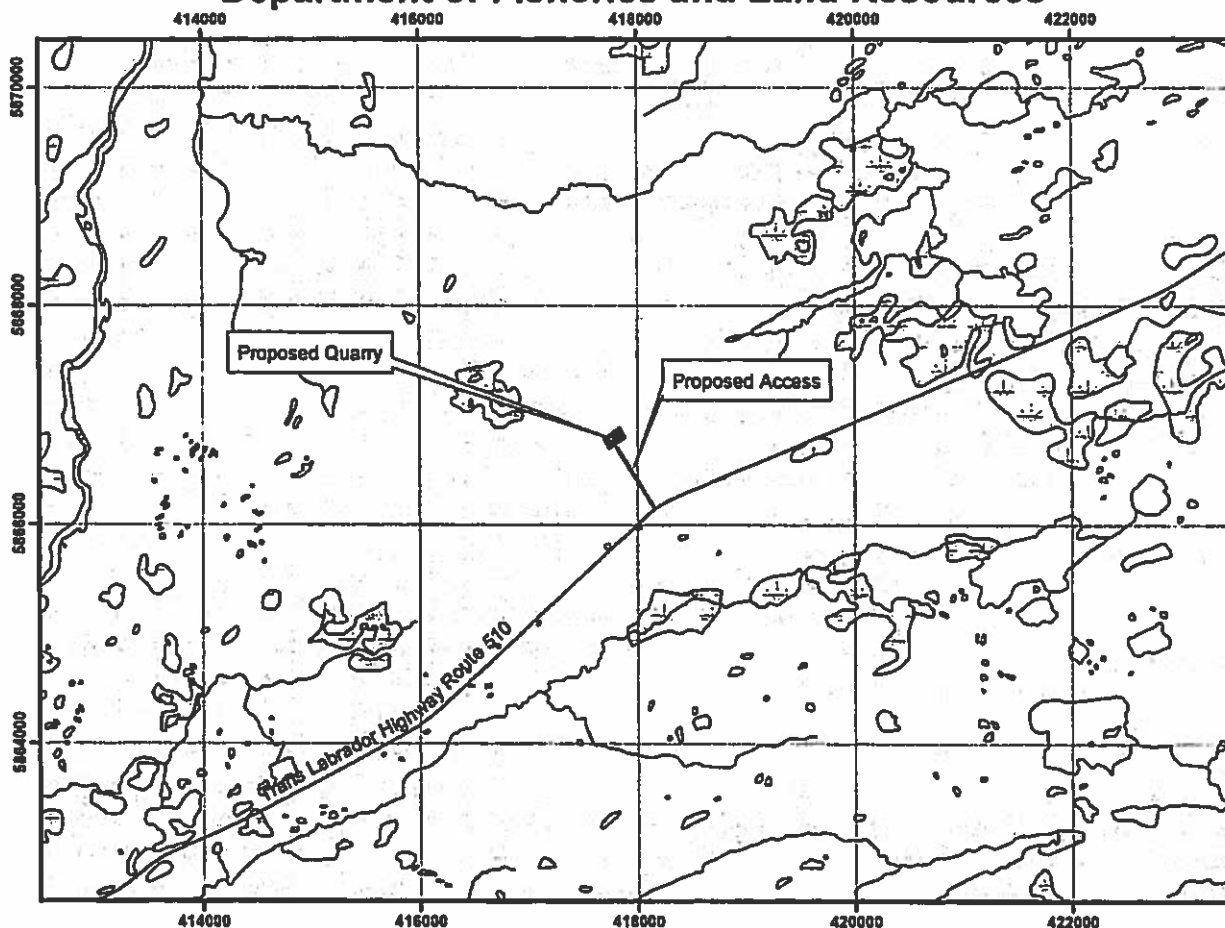
For inquiries please contact a Regional Lands Office.
Goose Bay - 896-2488
Corner Brook - 637-2387
Gander - 256-1400
St. John's - 729-2654
Clareville - 466-4074

Scale 1:10,000
Compiled October 25, 2018
UTM Zone 21 NAD 83
TP

Crown Lands Division



**Government of Newfoundland & Labrador
Department of Fisheries and Land Resources**



NOTE TO USERS

The information on this map was compiled from land surveys registered in the Crown Lands Registry.

Since the Registry does not contain information on all land ownership within the Province, the information depicted cannot be considered complete.

The boundary lines shown are intended to be used as an index to land titles issued by the Crown. The accuracy of the plot is not sufficient for measurement purposes and does not guarantee title.

Users finding any errors or omissions on this map sheet are asked to contact the Crown Titles Mapping Section, Herby Building Higgins Lane St. John's Newfoundland.

Users finding error or omissions can contact the Crown Titles Mapping Section by telephone at 729-0081. Some titles may not be plotted due to Crown Lands volumes missing from the Crown Lands registry or not plotted due to insufficient survey information.

The User hereby indemnifies and saves harmless the Minister, his officers, employees and agents from and against all claims, demands, liabilities, actions or cause of actions alleging any loss, injury, damage and matter (including claims or demands for any violation of copyright or intellectual property) arising out of any reliance on incomplete Crown Land titles, and the Minister, his or her officers, employees and agents shall not be liable for any loss of profits or contracts or any other loss of any kind as a result.

For inquiries please contact a Regional Lands Office.
Goose Bay - 838-2488
Corner Brook - 837-2387
Gander - 256-1480
St. John's - 729-2654
Clareville - 488-4874

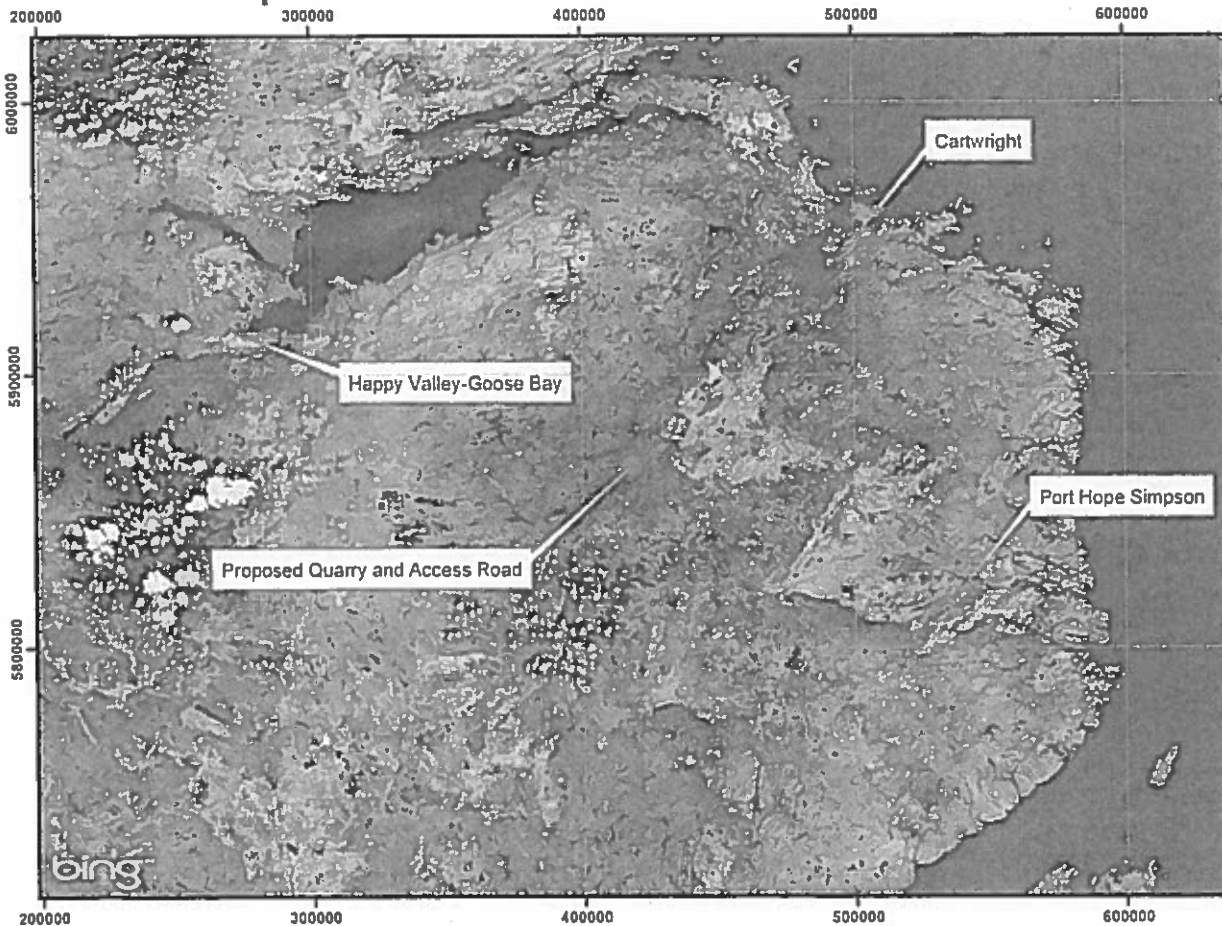
Scale 1:50,000
NAD 83 UTM Zone 21 U
Compiled January 14, 2019
TP

Crown Lands Division

0 500 1,000 2,000 3,000 4,000 Meters



Government of Newfoundland & Labrador
Department of Fisheries and Land Resources



NOTE TO USERS

The information on this map was sampled from land surveys registered in the Crown Lands Registry.

Since the Registry does not contain information on all land ownership within the Province, the information depicted cannot be considered complete.

The boundary lines shown are intended to be used as an index to land titles issued by the Crown. The accuracy of the plot is not sufficient for measurement purposes and does not guarantee it.

Users finding any errors or omissions on this map sheet are asked to contact the Crown Lands Mapping Section, Howley Building, Reggina Line, St. John's, Newfoundland.

Users finding errors or omissions can contact the Crown Lands Mapping Section by telephone at 709-0061. Some titles may not be plotted due to Crown lands volumes missing from the Crown Lands registry or not plotted due to insufficient survey information.

The User hereby indemnifies and saves harmless the Minister, his officers, employees and agents from and against all claims, demands, liabilities, actions, suits, costs of actions, alleging any loss, injury, damages and meter, including claims or demands for any violation of copyright or intellectual property, arising out of any misreading or misinterpretation of the Crown Lands titles and the Minister, his or her officers, employees and agents shall not be liable for any loss of profits or contracts or any other loss of any kind as a result.

For inquiries please contact a Regional Lands Office.
Goose Bay - 856-2488
Corner Brook - 637-2387
Gander - 256-1400
St. John's - 729-2654
Clareville - 466-4074

Scale 1:2,000,000
NAD 83 UTM Zone 21 U
Compiled January 14, 2019
TP

Crown Lands Division

