



Transmission Line 146L Gander to Gambo Rebuild Project

Appendices

APPENDIX A
Transmission Line Condition



Figure A-1 – Void in Pole Top, Hollow Pole



Figure A-2 – Deep Splits in Pole



Figure A-3 – Severe Splits in Pole through Cross Arm Bolt Locations



Figure A-4 – Large Crack through Cross Brace



Figure A-5 – Large Split in Pole, Hollow



Figure A-6 – Split through Pole Top, Woodpecker Holes



Figure A-7 – Pole Top Damage, Splits, Woodpecker Holes

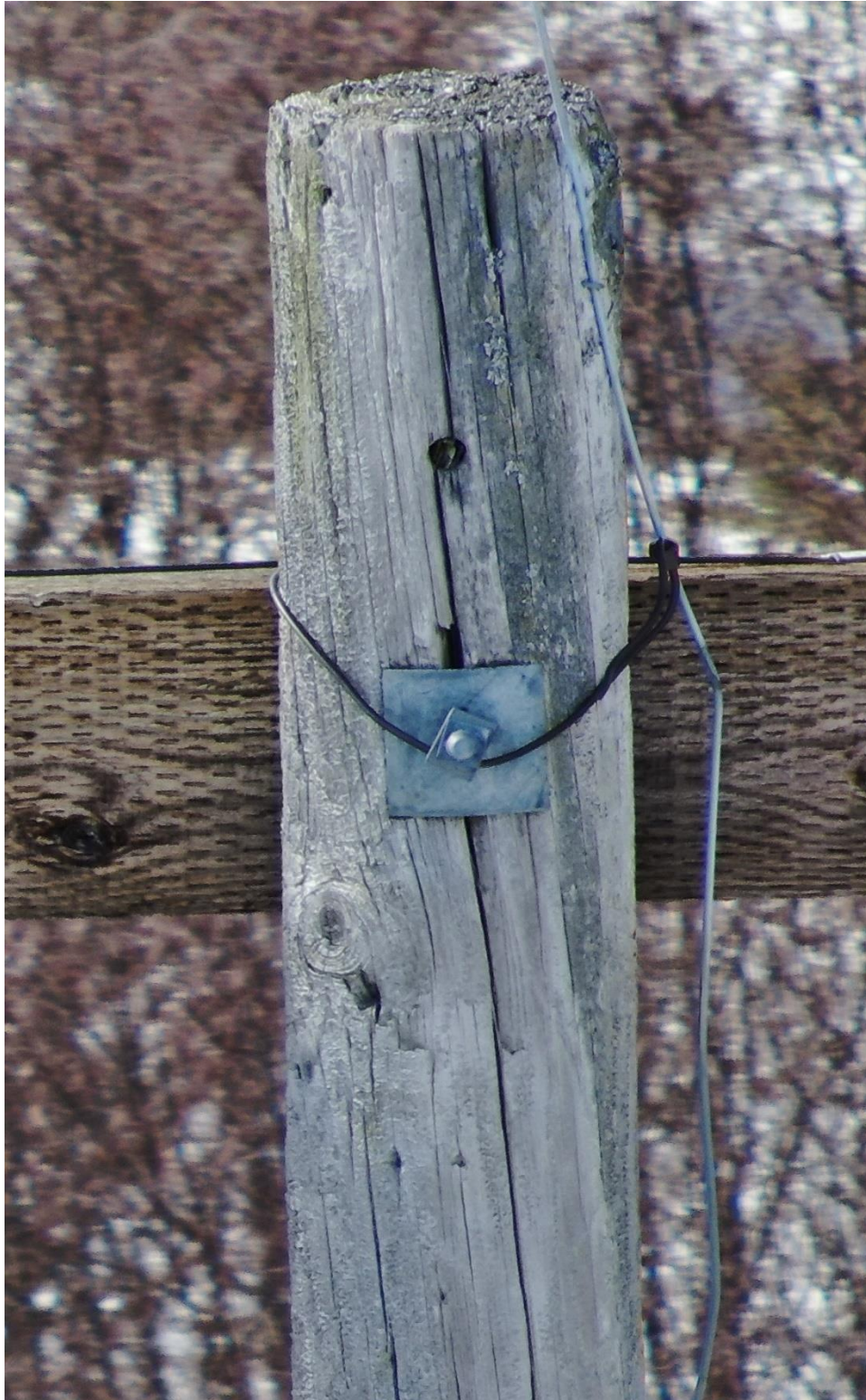


Figure A-8 – Deep Splits and Void in Pole through Cross Arm Bolt

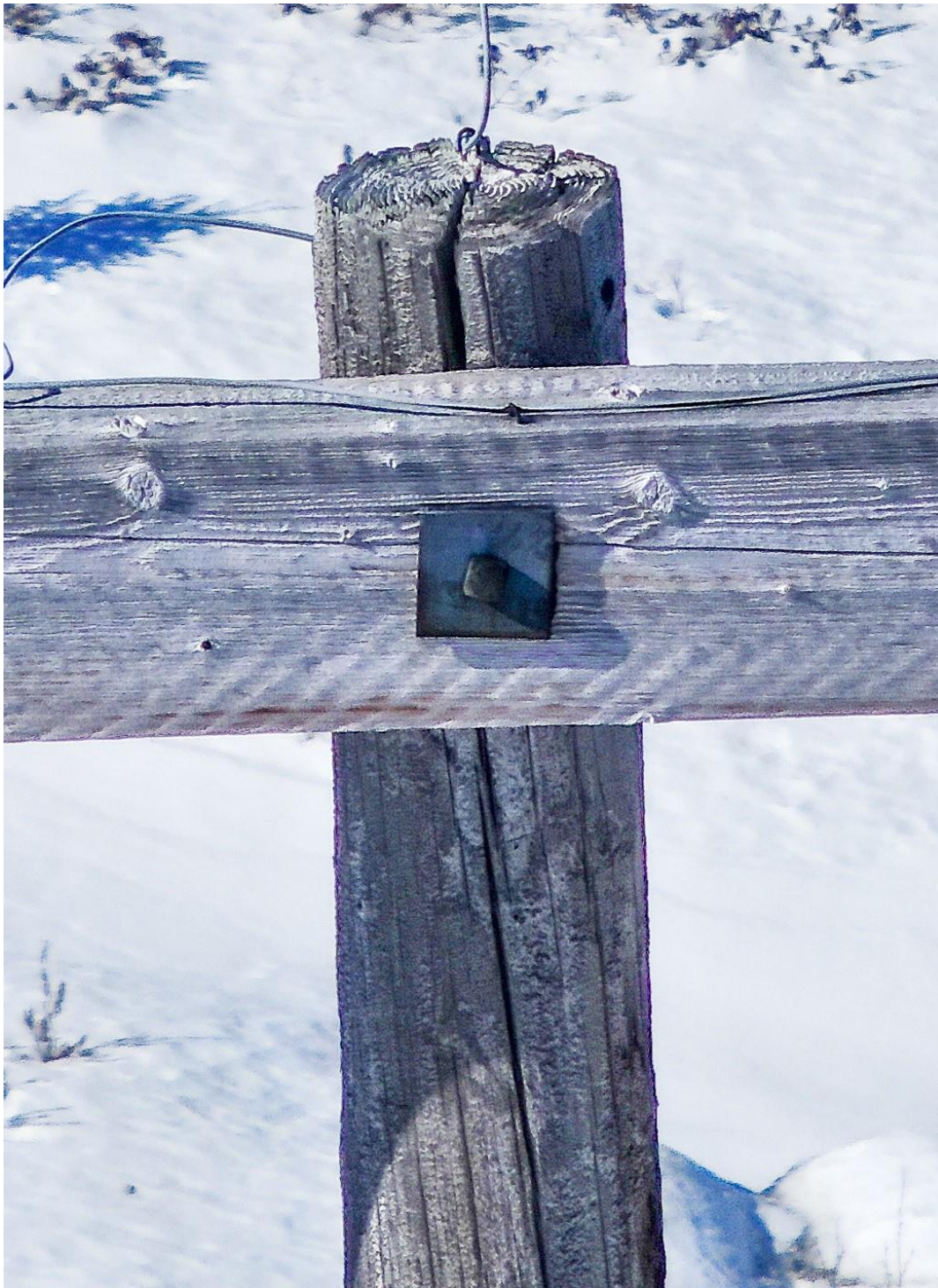


Figure A-9 – Deep Splits in Pole Top and Pole through Cross Arm Bolt



Figure A-10 – Shell Separation and Missing Crib

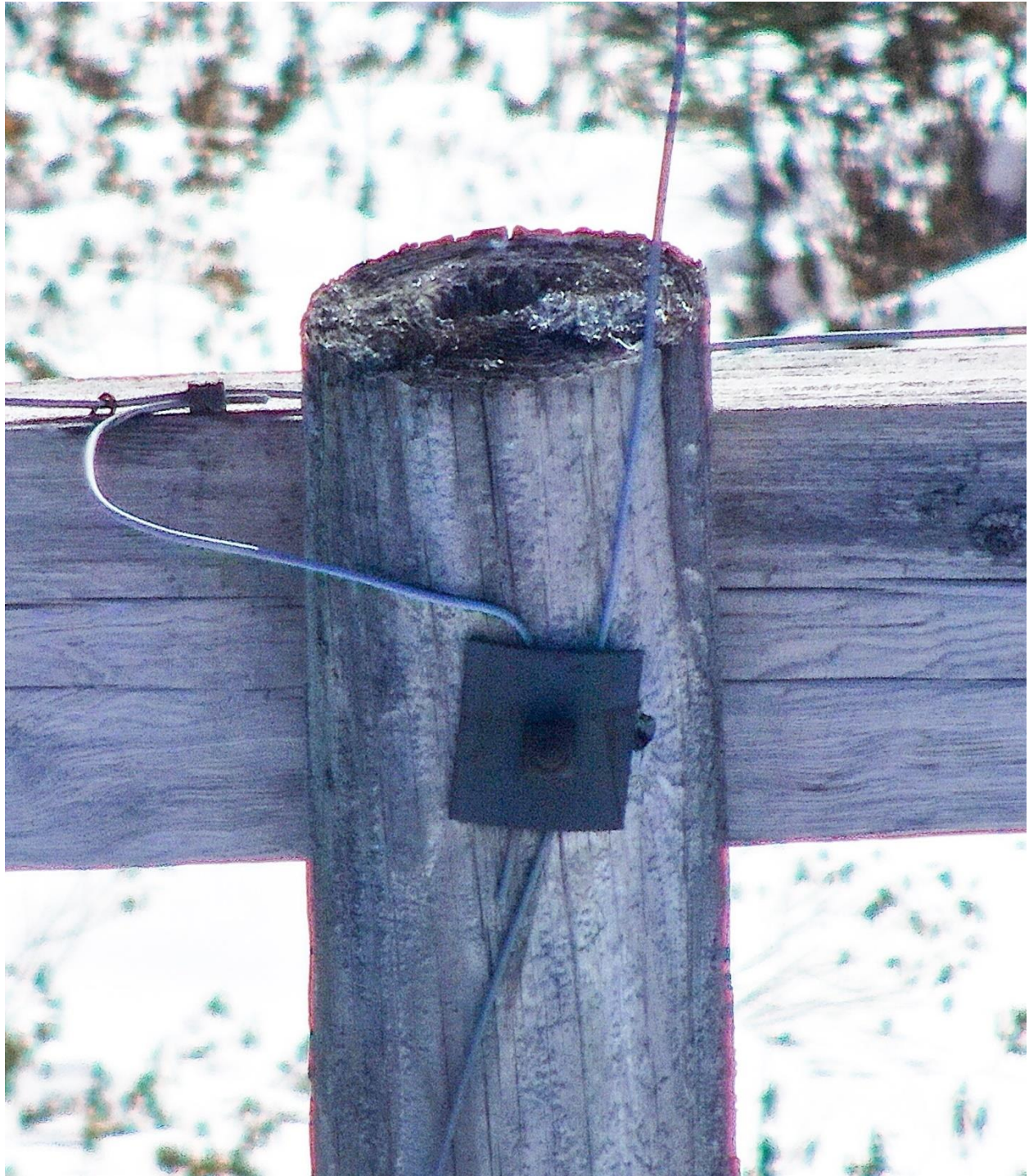


Figure A-11 – Hole in Top of Pole, Hollow

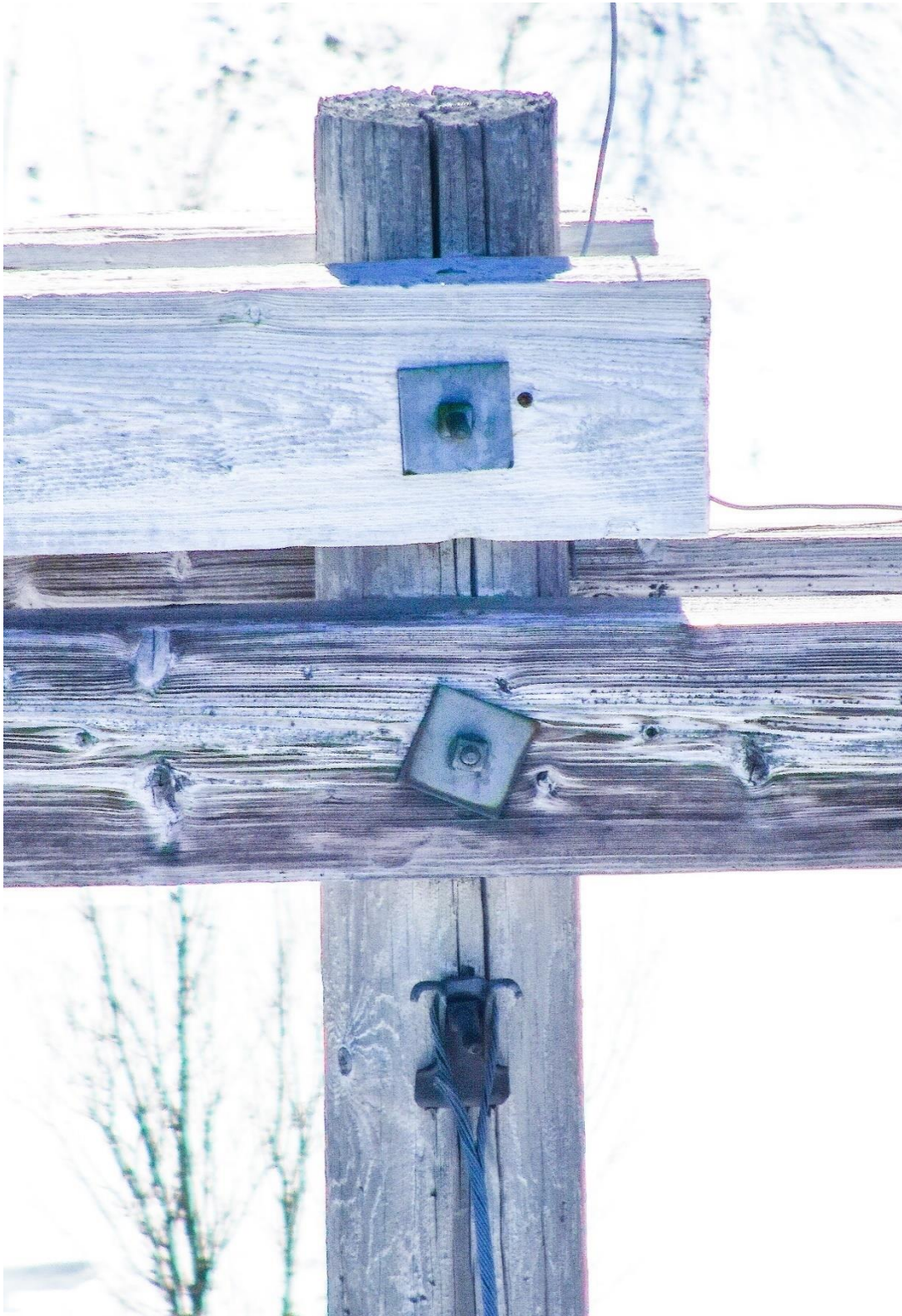


Figure A-12 – Severe Pole Splits through Cross Arm Bolts, Extra Arm Installed for Temporary Support



Figure A-13 – Pole Damage and Horizontal Crack



Figure A-14 - Shell Separation, Pole Damage



Figure A-15 - Pole Rot

Appendix B Mapping

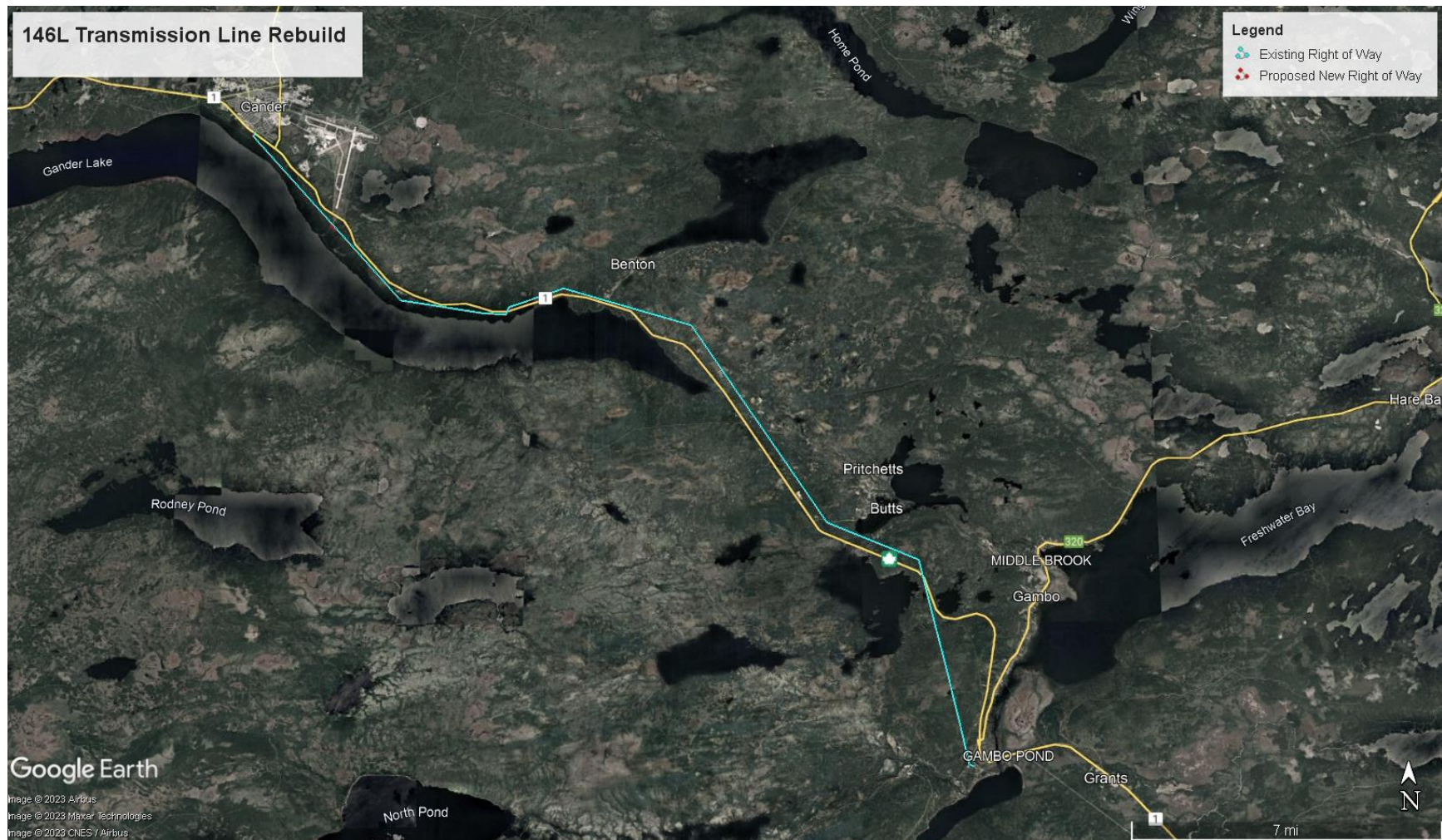


Figure B-1: Map of 146L rebuild Proposed Route.

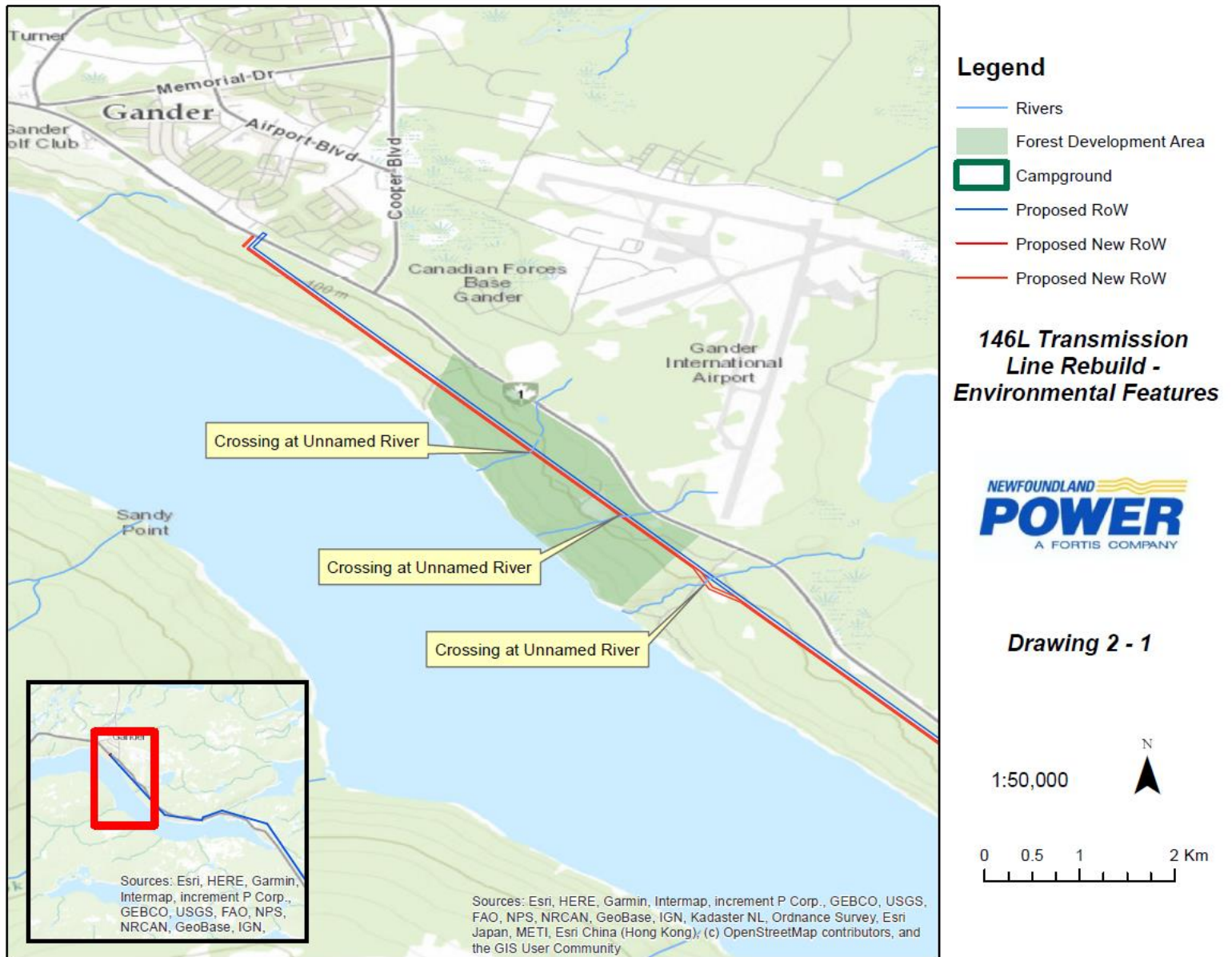


Figure B-2: Transmission Line 146L proposed RoW with crossing of three streams that are tributaries of Scheduled Salmon Rivers.

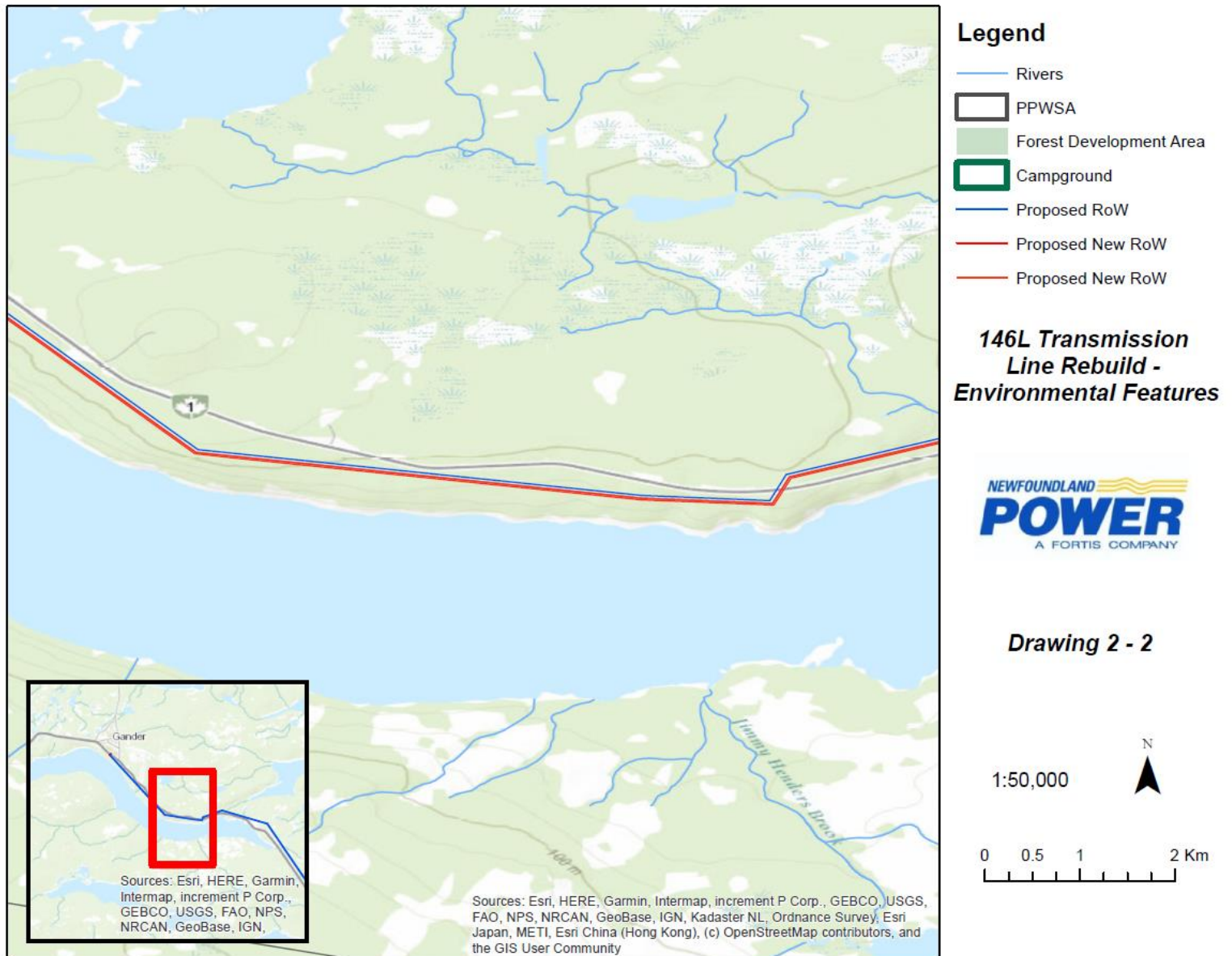


Figure B-3: Transmission Line 146L proposed RoW.

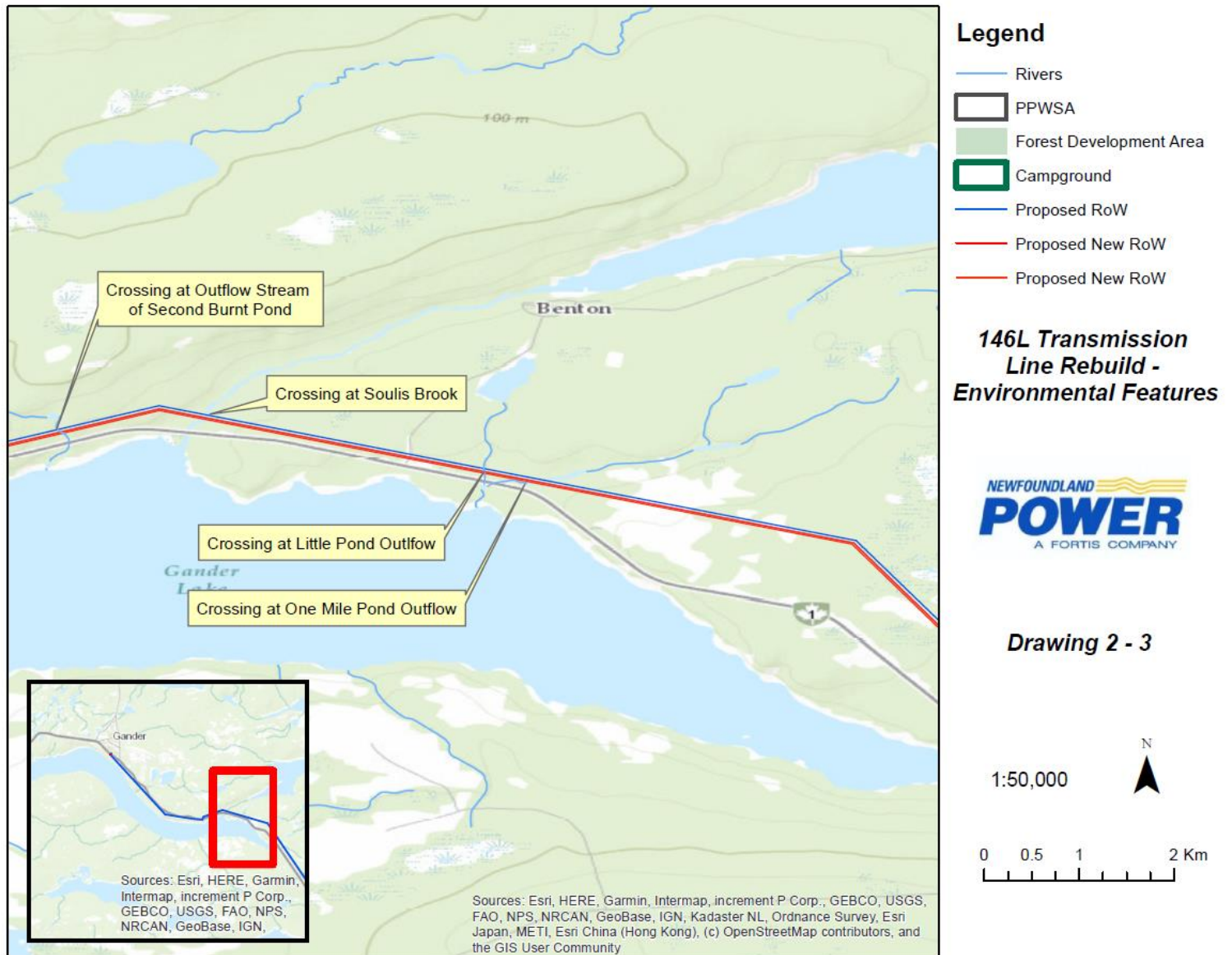


Figure B-4: Transmission Line 146L proposed RoW with crossing of four streams that are tributaries of Scheduled Salmon Rivers.

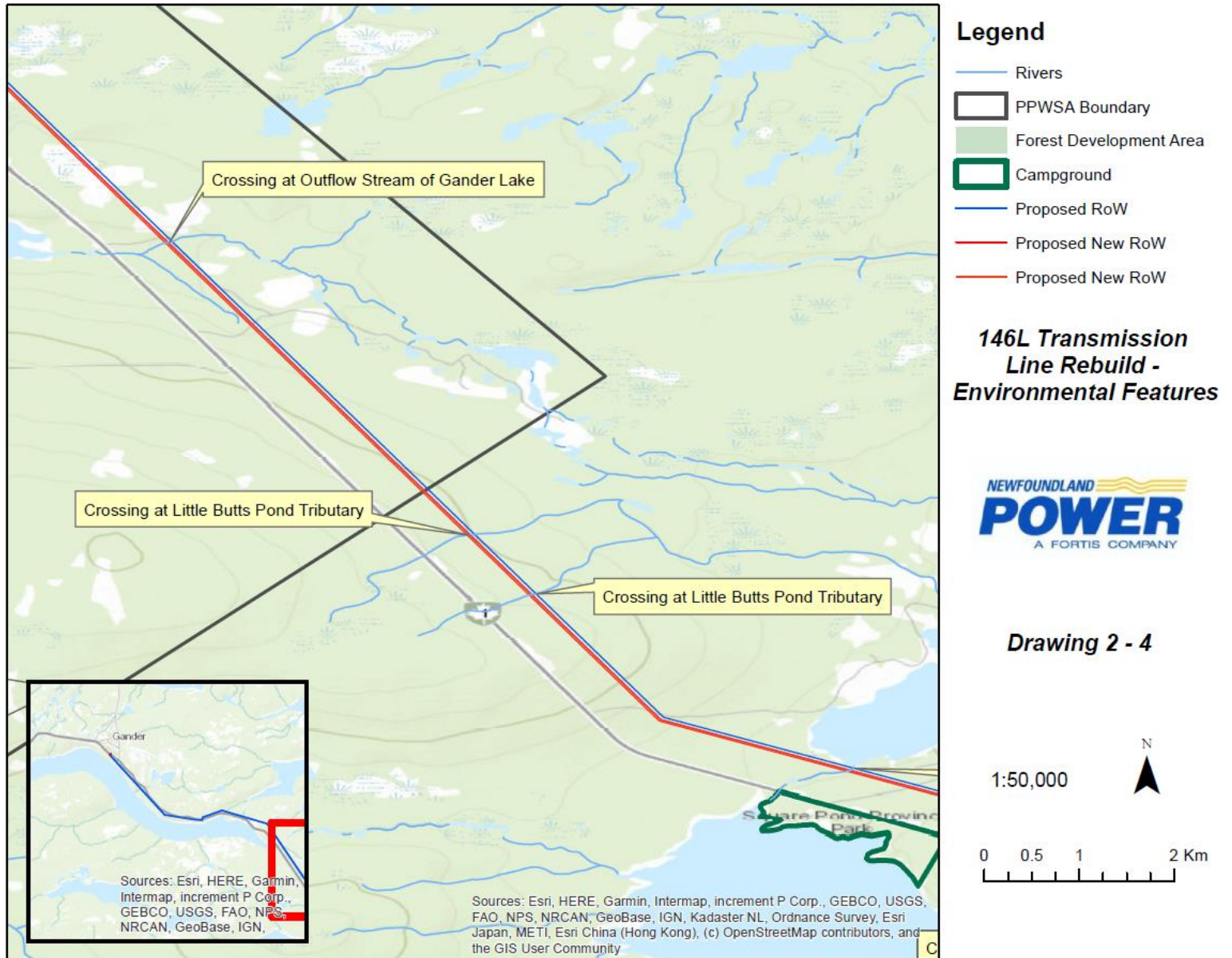


Figure B-5: Transmission Line 146L proposed RoW with crossing of three streams that are tributaries of Scheduled Salmon Rivers. Also shown is the easternmost boundary of the Gander Lake PPWSA.

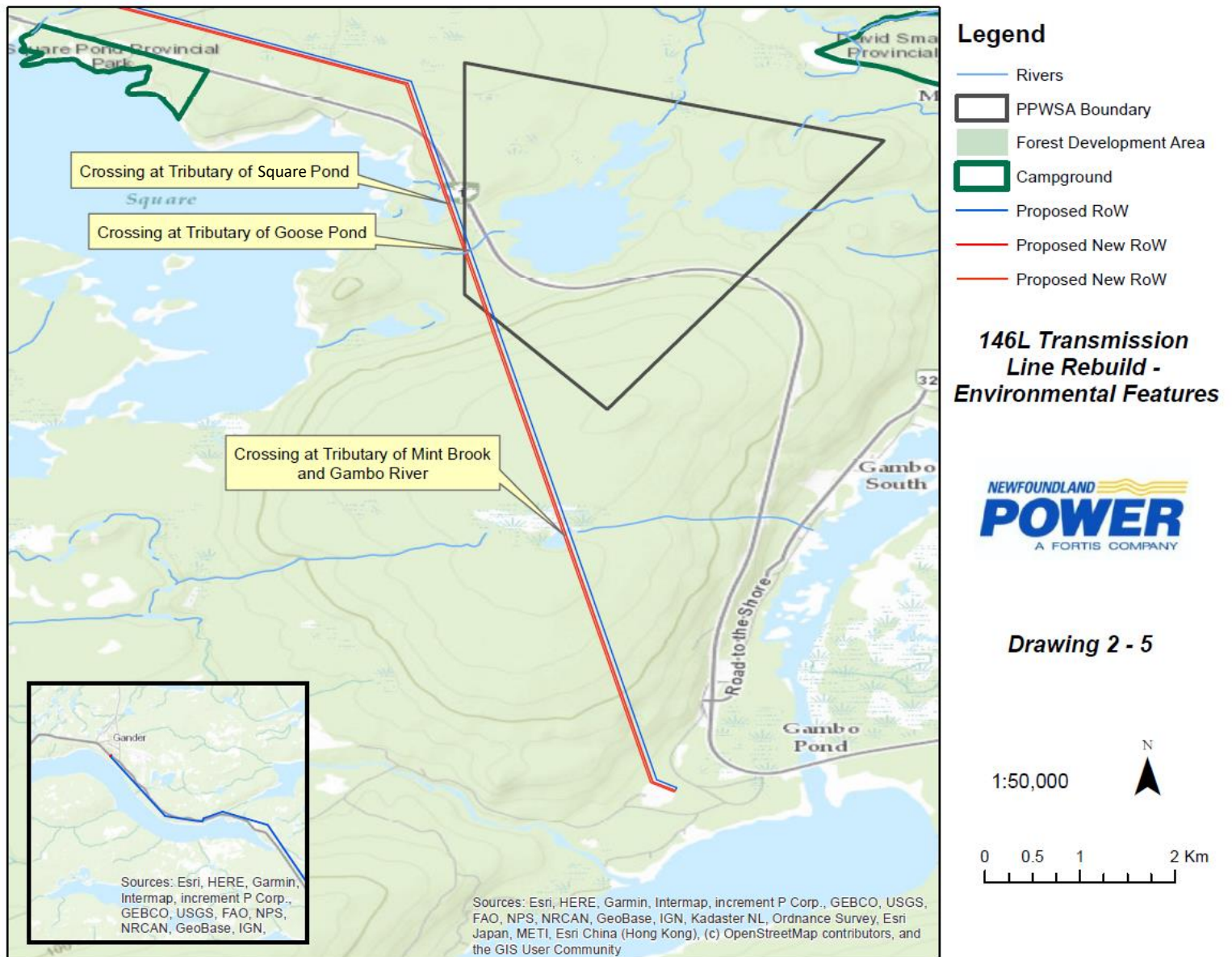


Figure B-6: Transmission Line 146L proposed RoW with crossing of three streams that are tributaries of Scheduled Salmon Rivers. The RoW runs within the Dark Cove PPWSA for approximately 500m.

APPENDIX C

Scheduled Salmon Rivers within 200m of the Project

Table C-1 Salmon Rivers within 200 meters of project activity, or Salmon Rivers with tributaries within 200 meters of project activity.

River	Longitude	Latitude	Scheduled
Middle Brook	54°18'6.26"W	48°48'28.84"N	Yes
Mint Brook	54°14'52.15"W	48°43'30.00"N	Yes
Gambo River	54°13'20.63"W	48°45'43.28"N	Yes

APPENDIX D

Caribou Management Plan

Caribou on the Island are of conservation concern to the Wildlife Division. The Newfoundland Population of Woodland Caribou is not currently listed under SAR or the NL ESA. However, the status of Newfoundland caribou has been identified as Special Concern by COSEWIC, which is a precursor to potential listing under SARA. Additionally, the Government of NL has developed a Caribou Strategy to address caribou population declines.

This project takes place inside the Middle Ridge Caribou Management Area. Industrial activity introduces potential for impacts to change in habitat including direct and/or indirect loss or alteration of habitat arising from vegetation clearing and/or sensory disturbance. Change in movement paths or patterns can also arise from change in habitat and/or sensory disturbance. Change in mortality risk can be directly impacted as a result of vegetation clearing vehicular collisions, and indirectly impacted through increased predation. This is not expected to have a significant impact on island herds as the project does not occur within a core habitat zone.

Environmental Protection Procedures

- Snow clearing is required during decommissioning, snowbanks will be less than 1m tall to facilitate caribou crossing, and breaks in snowbanks will be provided at approximately 200m intervals, to the extent practicable to provide wildlife crossing opportunities;
- Project vehicles will be required to adhere to posted speed limits;
- To reduce the risk of caribou-vehicle collisions, speeds will be reduced and the vehicle stopped (if necessary) to allow caribou to leave the road;
- Caribou-vehicle collisions, near misses, or observations of road mortality will be reported to the NL Power Environment Department and the NL Department of Fisheries, Forestry and Agriculture – Wildlife Division;
- The Environment manager will be notified if caribou are observed within 500m of Project activities to determine if the activity should be reduced or delayed (in consultation with the NL Department of Fisheries, Forestry and Agriculture -Wildlife Division will be reduced or delayed when caribou are observed within 500 meters of project activity, as applicable);
- Personal pets (domestic or wild) will be prohibited on site during construction;
- Project contractors and staff will be prohibited from fishing, hunting, or otherwise interacting (e.g. harassment, feeding) with wildlife at the site while working on the Project.