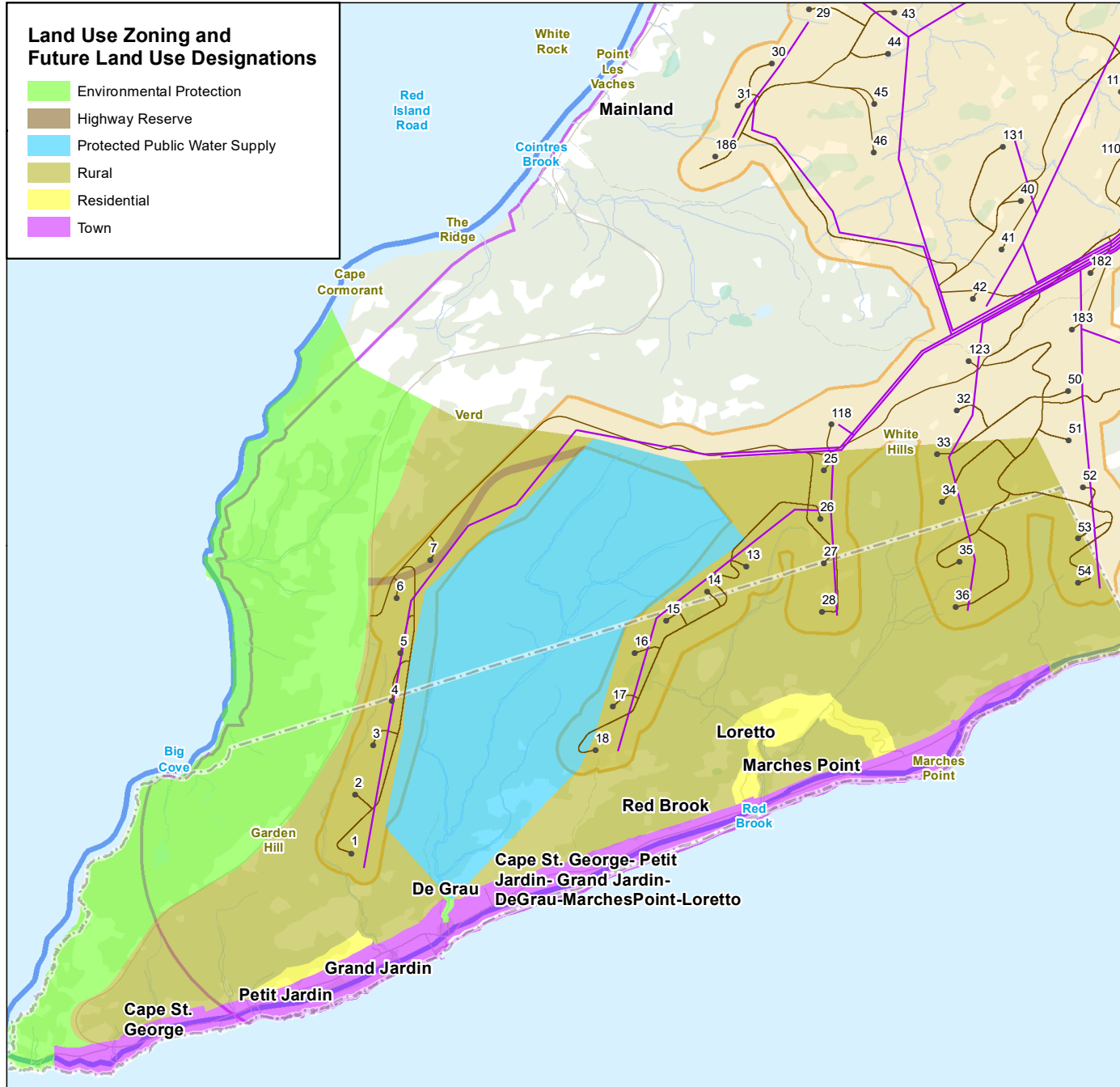


Appendix DMPA1-A

Mapbook – Land Use

Project Nujio'qonik: Amendment to the Environmental Impact Statement

\\lca0151-ppfs01\work_group\12141723\303_data\gis_cad\gis_data\mapping\mxd\general\EIS_Amendment\Ch09_MPA\121418050_09_DMPA1.1_LUZ_FLU_CapeStGeorge.mxd Revised: 2024-01-17 By: acuff



Proposed Project Features

- Turbine Location
- Collector Line
- Access Road
- Project Area
- Local Assessment Area
- Regional Assessment Area

Other Features

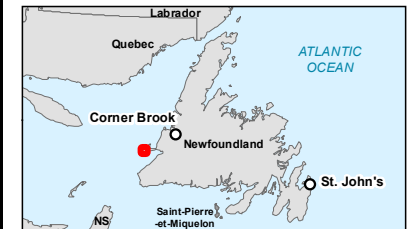
- Municipal Boundary
- Road
- Road
- Resource Road / Trail
- Watercourse
- Waterbody
- Wetland
- Forested Area



0 1 2 km
(At original document size of 8.5x11)
1:70,000

Notes

- Coordinate System: NAD 1983 CSRS UTM Zone 21N
- Data Sources: World Energy GH2, NRCAN CanVec, GovNL, Openstreetmap
- Background: NRCAN CanVec



Project Location
Stephenville
NL

Prepared by AC on 1/17/2024
QR by AW on 2024-01-08

Client/Project
World Energy GH2
Project Nujio'qonik

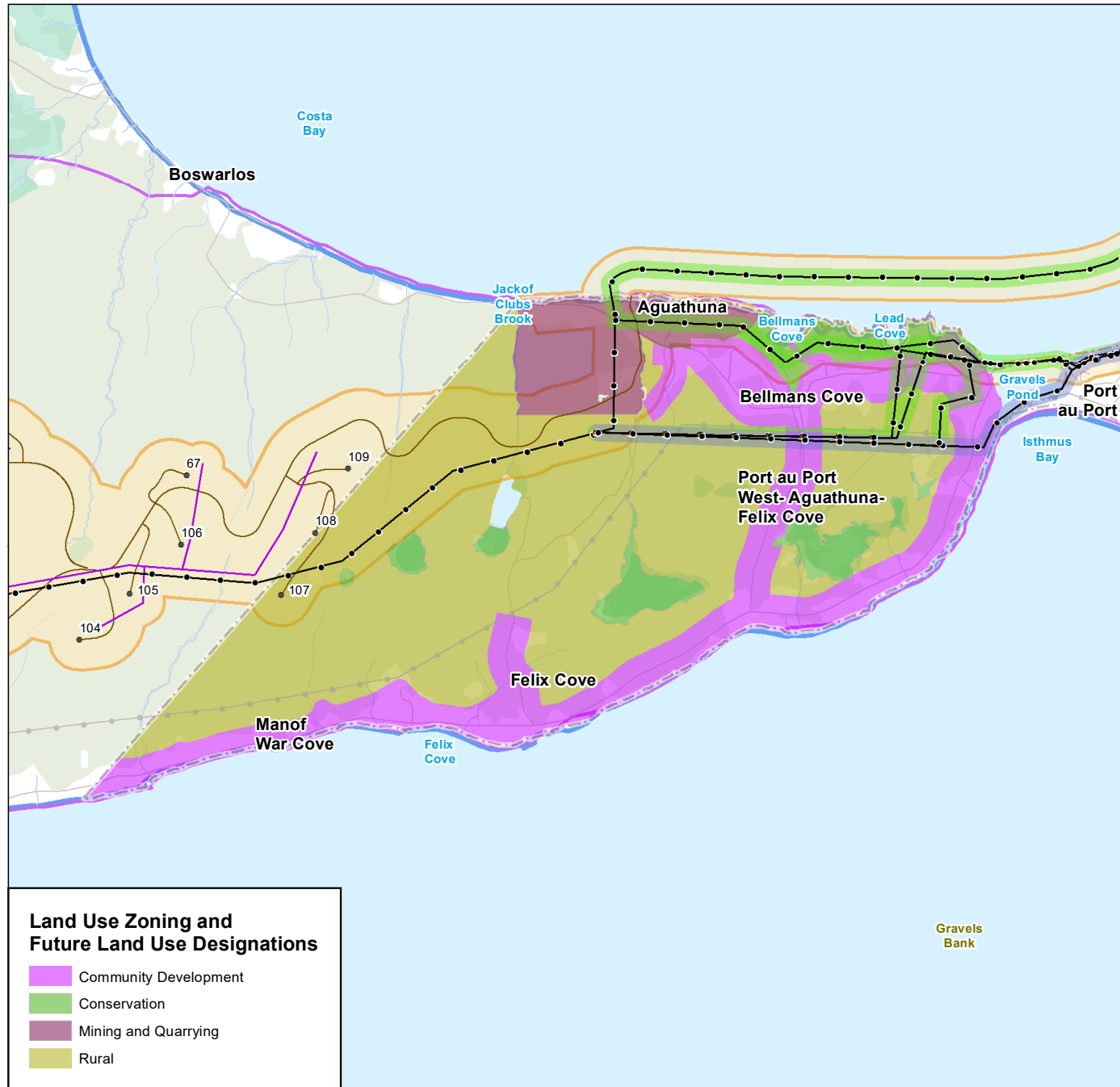
121418050_09

Figure No.
DMPA1.1

Land Use Zoning and Future Land Use Designations - Cape St. George

Disclaimer: This document has been prepared based on information provided by others as cited in the Notes section. Stantec has not verified the accuracy and/or completeness of this information and shall not be responsible for any errors or omissions which may be incorporated herein as a result. Stantec assumes no responsibility for data supplied in electronic format, and the recipient accepts full responsibility for verifying the accuracy and completeness of the data.

\\lca0151-ppfs01\work_group\1214\active\12141723\03_data\gis_cad\gis_data\mapping\mxd\general\EIS_Amendment\Ch09_MPA1\121418050_09_DMIPA1-2_LUZ_FLU_PaPW.mxd Revised: 2024-01-17 By: aculf



- Proposed Project Features**
- Turbine Location
 - Transmission Line 230 kV
 - Collector Line
 - Access Road
- Other Features**
- Transmission Line, Existing
 - Municipal Boundary
 - Road
 - Road
 - Resource Road / Trail
 - Contour (100m)
 - Watercourse
 - Waterbody
 - Wetland
 - Forested Area
- Port au Port Interconnection**
- Proposed Route
 - Alternate Route
 - Project Area
 - Local Assessment Area
 - Regional Assessment Area



0 0.75 1.5 km
(At original document size of 8.5x11)
1:50,000

Notes

- Coordinate System: NAD 1983 CSRS UTM Zone 21N
- Data Sources: World Energy GH2, NRCAN CanVec, GovNL, Openstreetmap
- Background: NRCAN CanVec



Project Location: Stephenville, NL
Prepared by AC on: 1/17/2024
QR by AW on: 2024-01-08

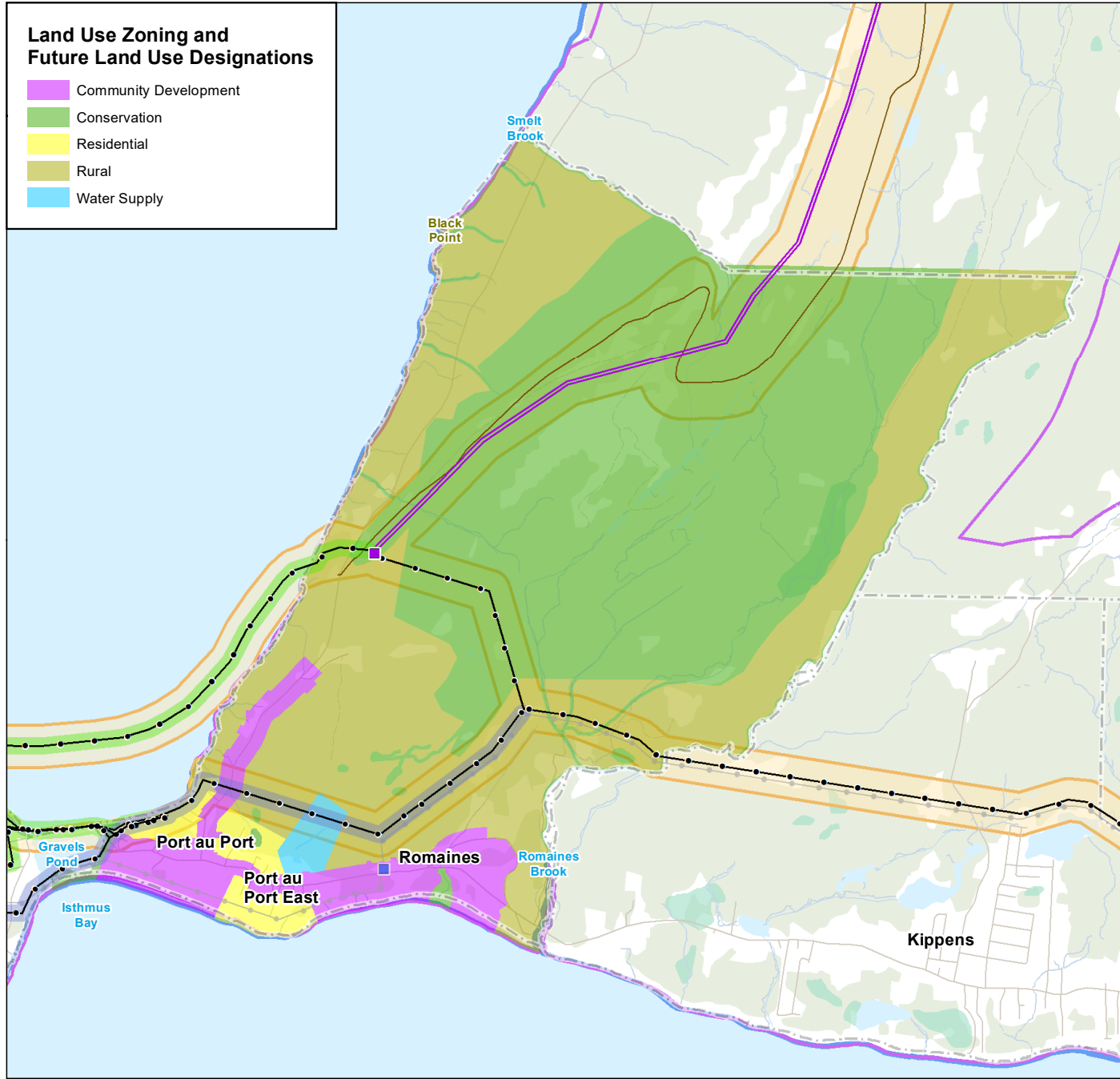
Client/Project: World Energy GH2
Project Nujio'qonik

Figure No.: DMPA1.2

Land Use Zoning and Future Land Use Designs - Port au Port West - Aguathuna - Felix Cove

Disclaimer: This document has been prepared based on information provided by others as cited in the Notes section. Stantec has not verified the accuracy and/or completeness of this information and shall not be responsible for any errors or omissions which may be incorporated herein as a result. Stantec assumes no responsibility for data supplied in electronic format, and the recipient accepts full responsibility for verifying the accuracy and completeness of the data.

\\lca0151-ppfs01\work_group\12141723\303_data\gis_cad\gis_data\mapping\mxd\general\EIS_Amendment\Ch09_MPA1\121418050_09_DMFA1\3_LUZ_FLU_PaPE.mxd Revised: 2024-01-17 By: aculf



Proposed Project Features

- Transmission Line 230 kV
- Substation
- Collector Line
- Access Road

Port au Port Interconnection

- Proposed Route
- Alternate Route
- Project Area
- Local Assessment Area
- Regional Assessment Area

Other Features

- Substation
- Transmission Line, Existing
- Municipal Boundary
- Road
- Road
- Resource Road / Trail
- Contour (100m)
- Watercourse
- Waterbody
- Wetland
- Forested Area



0 0.75 1.5 km
(At original document size of 8.5x11)
1:50,000

Notes

- Coordinate System: NAD 1983 CSRS UTM Zone 21N
- Data Sources: World Energy GH2, NRCAN CanVec, GovNL, Openstreetmap
- Background: NRCAN CanVec



Project Location
Stephenville
NL

Prepared by AC on 1/17/2024
QR by AW on 2024-01-08

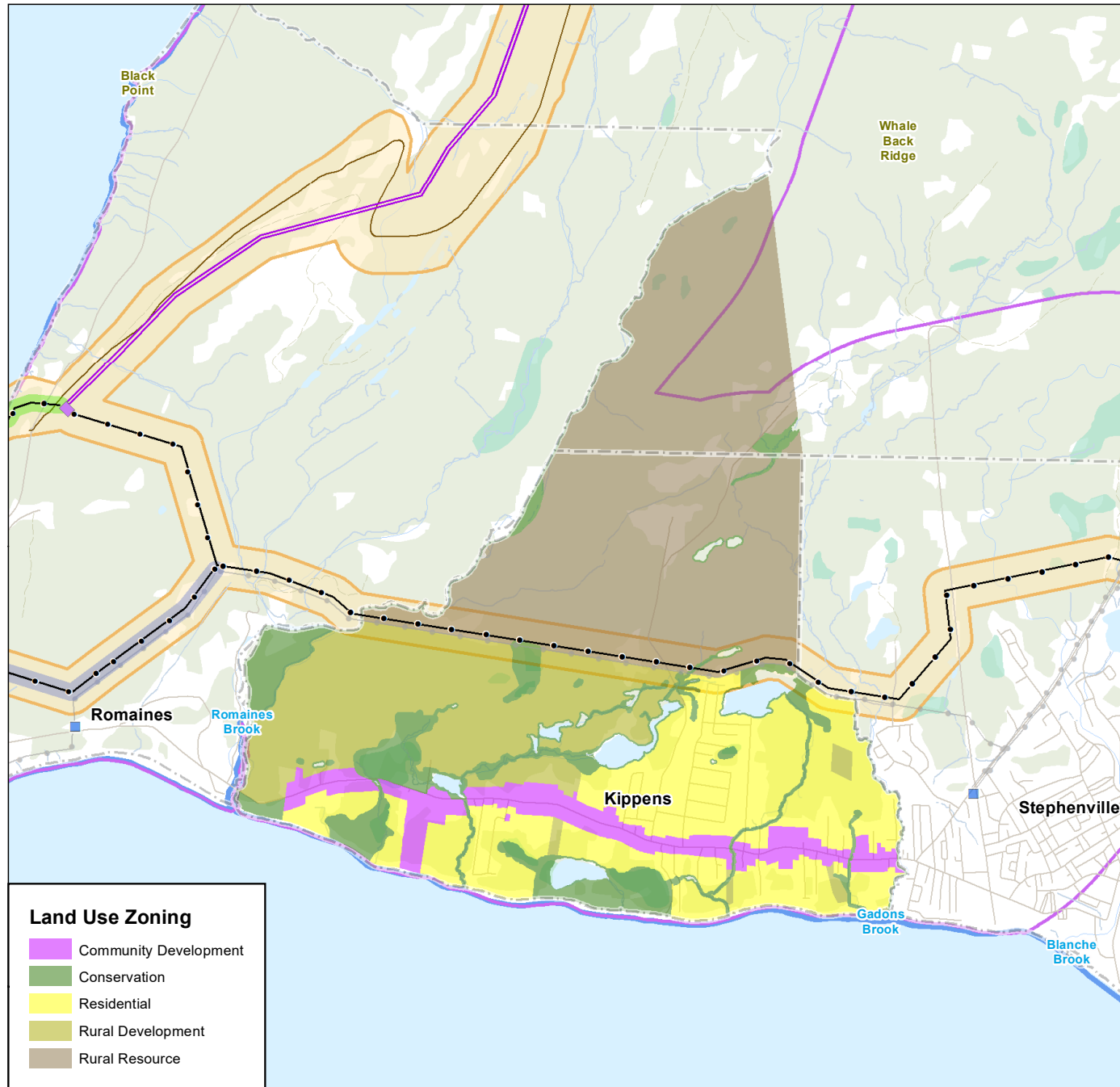
Client/Project
World Energy GH2
Project Nujlo'qonik

121418050_09

Figure No.
DMPA1.3

**Land Use Zoning and Future Land
Use Designations - Port au Port East**

Disclaimer: This document has been prepared based on information provided by others as cited in the Notes section. Stantec has not verified the accuracy and/or completeness of this information and shall not be responsible for any errors or omissions which may be incorporated herein as a result. Stantec assumes no responsibility for data supplied in electronic format, and the recipient accepts full responsibility for verifying the accuracy and completeness of the data.



Proposed Project Features

- Substation
- Transmission Line 230 kV
- Collector Line
- Access Road

Port au Port Interconnection

- Proposed Route
- Alternate Route
- Project Area
- Local Assessment Area
- Regional Assessment Area

Other Features

- Substation
- Transmission Line, Existing
- Municipal Boundary
- Road
- Road
- Resource Road / Trail
- Contour (100m)
- Watercourse
- Wetland
- Waterbody
- Forested Area



0 0.75 1.5 km
(At original document size of 8.5x11)
1:50,000

Notes

- Coordinate System: NAD 1983 CSRS UTM Zone 21N
- Data Sources: World Energy GH2, NRCAN CanVec, GovNL, Openstreetmap
- Background: NRCAN CanVec



Project Location
Stephenville
NL

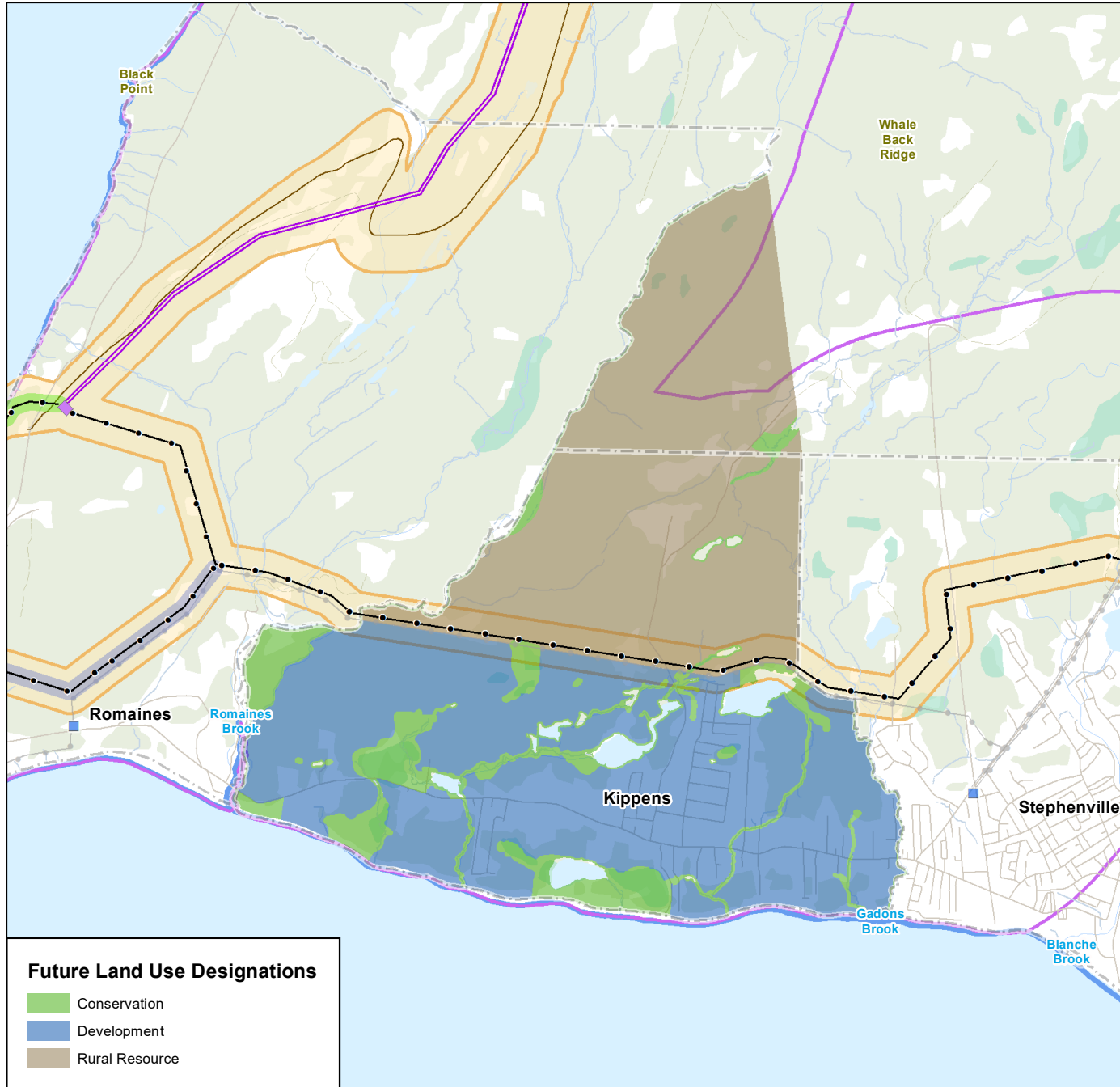
Prepared by AC on 1/17/2024
QR by AW on 2024-01-08

Client/Project
World Energy GH2
Project Nujlo'qonik

121418050_09

Figure No.
DMPA1.4A

Land Use Zoning - Kippens



Proposed Project Features

- Substation
- Transmission Line 230 kV
- Collector Line
- Access Road

Other Features

- Substation
- Transmission Line, Existing
- Municipal Boundary
- Road
- Road
- Resource Road / Trail
- Contour (100m)
- Watercourse
- Wetland
- Waterbody
- Forested Area

Port au Port Interconnection

- Proposed Route
- Alternate Route
- Project Area
- Local Assessment Area
- Regional Assessment Area



0 0.75 1.5 km
(At original document size of 8.5x11)
1:50,000

Notes

- Coordinate System: NAD 1983 CSRS UTM Zone 21N
- Data Sources: World Energy GH2, NRCAN CanVec, GovNL, Openstreetmap
- Background: NRCAN CanVec

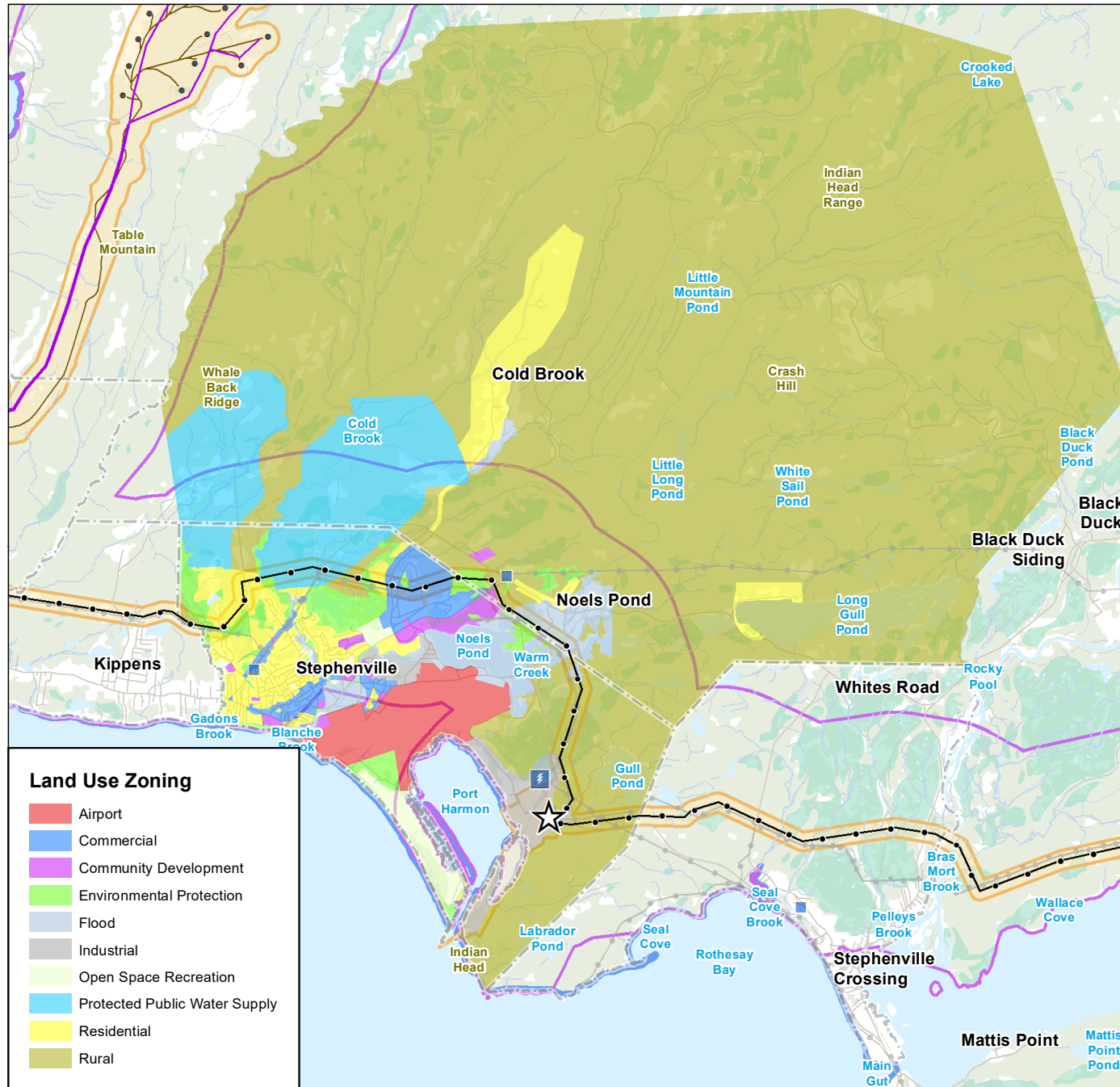


Project Location: Stephenville, NL
Prepared by AC on 1/17/2024
QR by AW on 2024-01-08

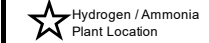
Client/Project: World Energy GH2
Project Nujio'qonik

Figure No.
DMPA1.4B

Future Land Use Designations - Kippens



Proposed Project Features



- Turbine Location
- Substation
- Transmission Line 230 kV
- Collector Line
- Access Road
- Project Area
- Local Assessment Area
- Regional Assessment Area

Other Features

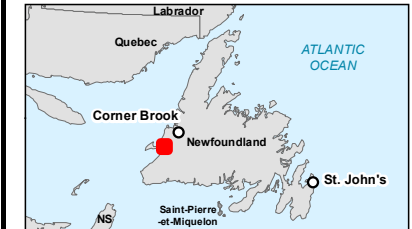
- Substation
- Electrical Generation
- Transmission Line, Existing
- Municipal Boundary
- Road
- Resource Road / Trail
- Contour (100m)
- Watercourse
- Wetland
- Waterbody
- Forested Area



0 1.5 3 km
(At original document size of 8.5x11)
1:115,000

Notes

- Coordinate System: NAD 1983 CSRS UTM Zone 21N
- Data Sources: World Energy GH2, NRCAN CanVec, GovNL, Openstreetmap
- Background: NRCAN CanVec



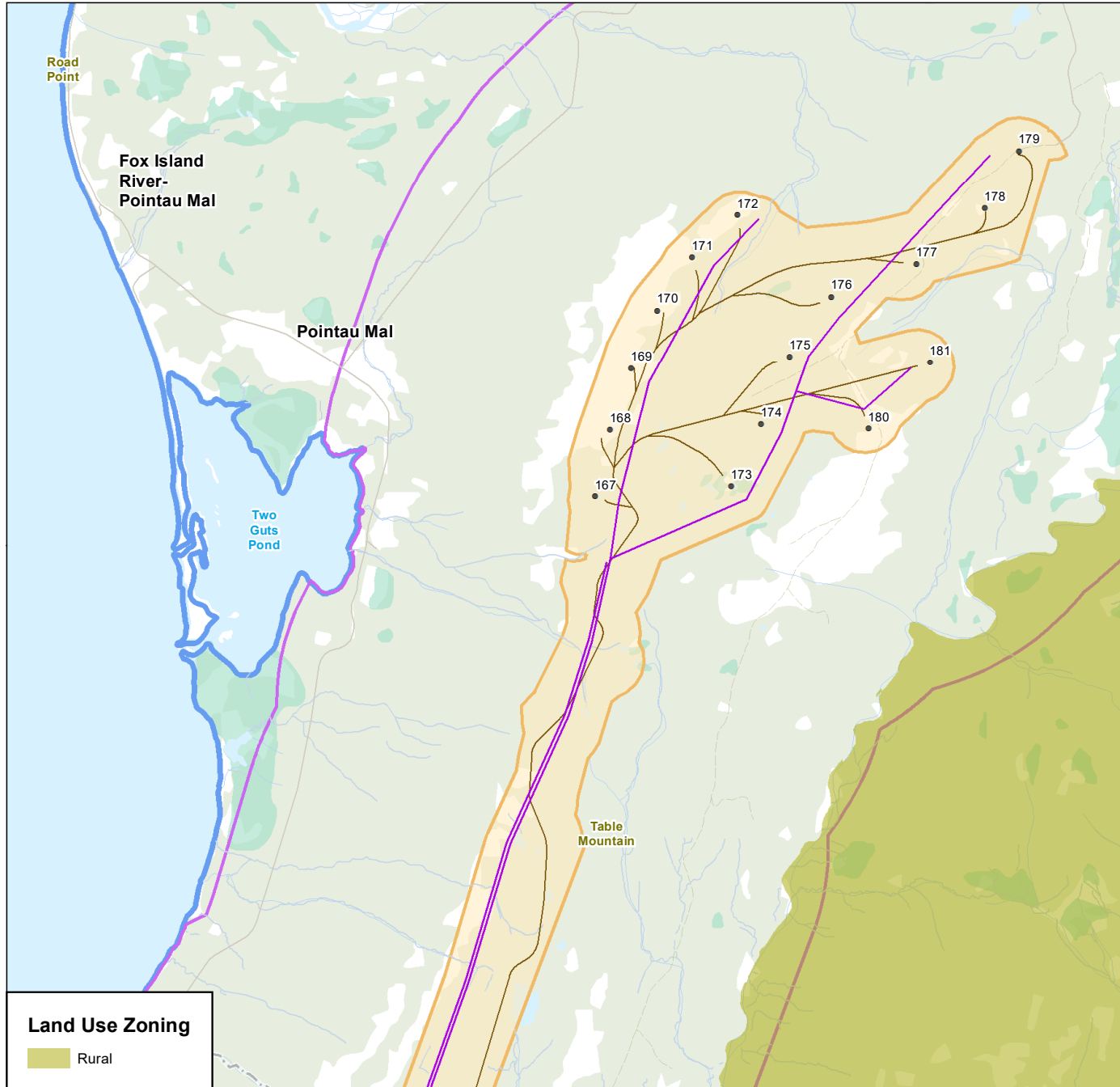
Project Location: Stephenville, NL
Prepared by AC on 1/17/2024
QR by AW on 2024-01-08

Client/Project: World Energy GH2
Project Nujio'qonik

Figure No.
DMPA1.5A1

Land Use Zoning - Stephenville

\\ca0151-ppfs01\work_group\12141active\12141723\303_data\gis_cad\gis_data\mapping\mxd\general\EIS_Amendment\Ch09_MPA\121418050_09_DM\PA1-5A2_LUZ_Stephenville_50k.mxd Revised: 2024-01-17 By: acuff



Proposed Project Features

- Turbine Location
- Substation
- Transmission Line 230 kV
- Collector Line
- Access Road
- Project Area
- Local Assessment Area
- Regional Assessment Area

Other Features

- Municipal Boundary
- Road
- Road
- Resource Road / Trail
- Contour (100m)
- Watercourse
- Wetland
- Waterbody
- Forested Area



0 0.75 1.5 km
(At original document size of 8.5x11)
1:50,000

Notes

1. Coordinate System: NAD 1983 CSRS UTM Zone 21N
2. Data Sources: World Energy GH2, NRCAN CanVec, GovNL, Openstreetmap
3. Background: NRCAN CanVec



Project Location
Stephenville
NL

Prepared by AC on 1/17/2024
QR by AW on 2024-01-08

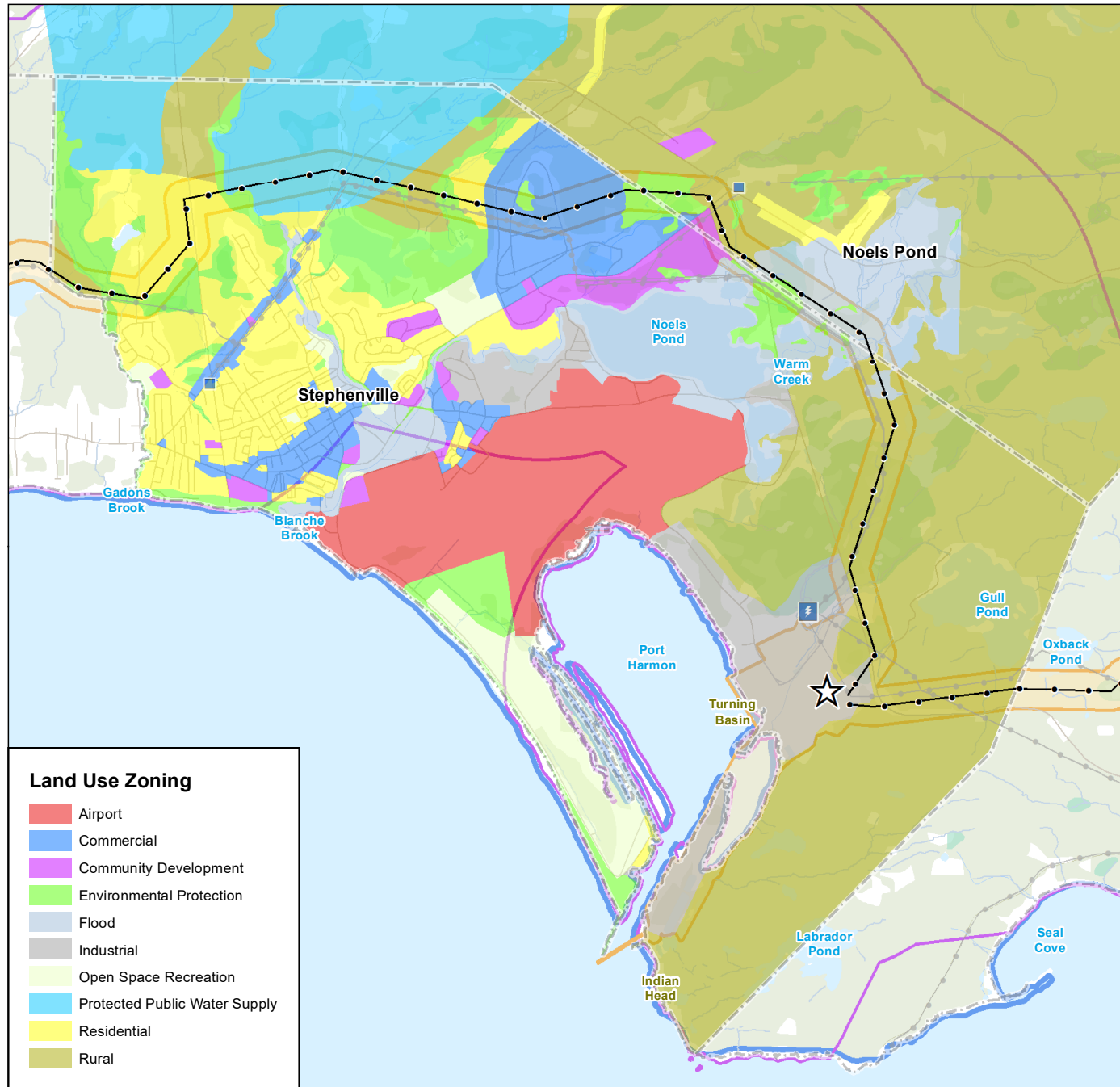
Client/Project
World Energy GH2
Project Nujio'qonik

121418050_09

Figure No.
DMPA1.5A2

Land Use Zoning - Stephenville

Disclaimer: This document has been prepared based on information provided by others as cited in the Notes section. Stantec has not verified the accuracy and/or completeness of this information and shall not be responsible for any errors or omissions which may be incorporated herein as a result. Stantec assumes no responsibility for data supplied in electronic format, and the recipient accepts full responsibility for verifying the accuracy and completeness of the data.



Proposed Project Features

- Hydrogen / Ammonia Plant Location
- Transmission Line 230 kV
- Project Area
- Local Assessment Area
- Regional Assessment Area

Other Features

- Substation
- Electrical
- Transmission Line, Existing
- Municipal
- Road
- Resource Road / Trail
- Contour (100m)
- Watercourse
- Waterbody
- Wetland
- Forested Area



0 0.5 1 1.5 km
(At original document size of 8.5x11)
1:55,000

Notes

1. Coordinate System: NAD 1983 CSRS UTM Zone 21N
2. Data Sources: World Energy GH2, NRCAN CanVec, GovNL, Openstreetmap
3. Background: NRCAN CanVec

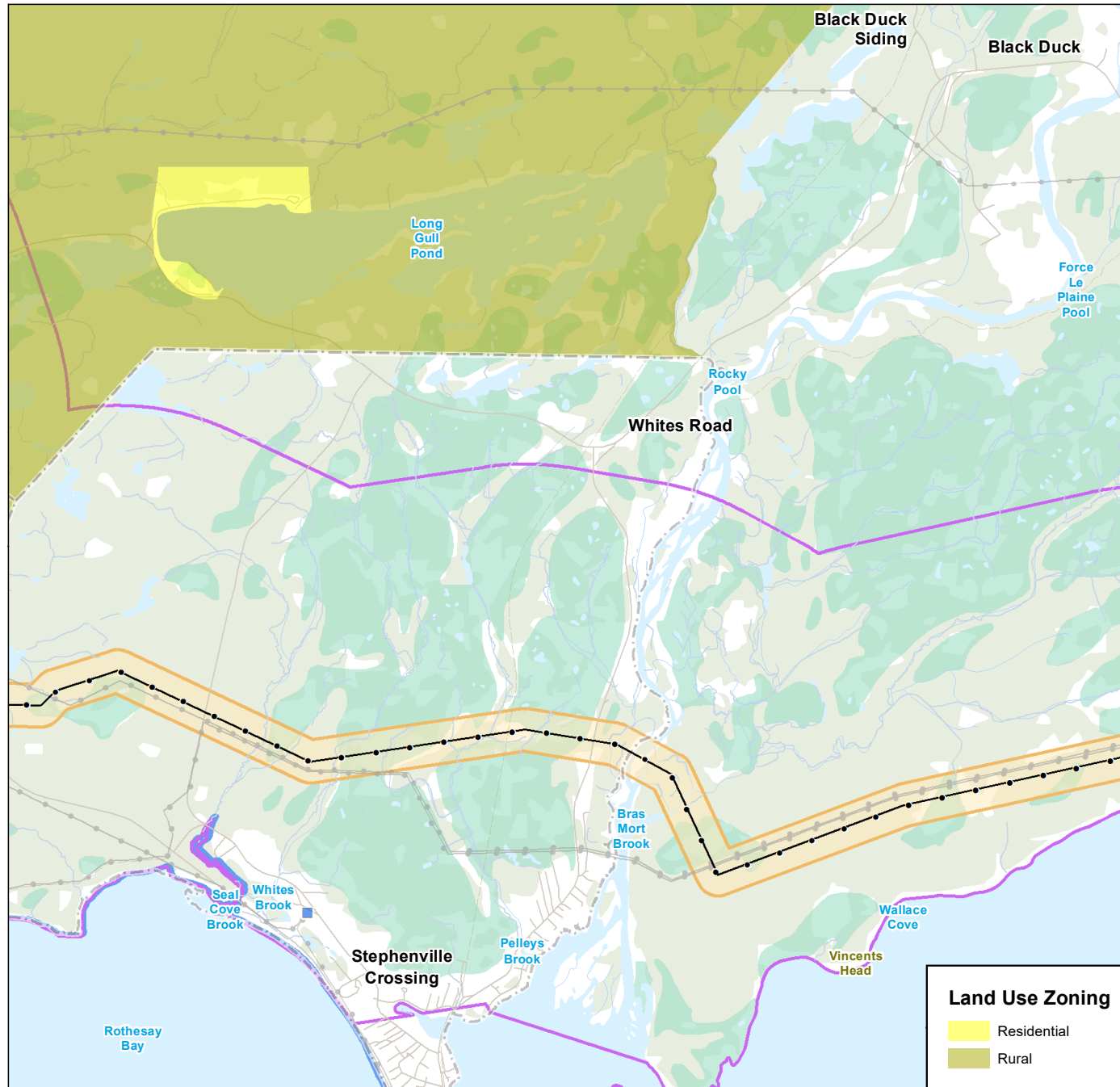


Project Location: Stephenville, NL
Prepared by AC on 1/23/2024
QR by AW on 2024-01-08

Client/Project: World Energy GH2
Project Nujio'qonik

Figure No.
DMPA1-5A3

Land Use Zoning - Stephenville



Proposed Project Features

- Transmission Line 230 kV
- Project Area
- Local Assessment Area
- Regional Assessment Area

Other Features

- Substation
- Transmission Line, Existing
- Municipal Boundary
- Road
- Resource Road / Trail
- Contour (100m)
- Watercourse
- Waterbody
- Wetland
- Forested Area



0 0.75 1.5 km
(At original document size of 8.5x11)
1:50,000

Notes

- Coordinate System: NAD 1983 CSRS UTM Zone 21N
- Data Sources: World Energy GH2, NRCAN CanVec, GovNL, Openstreetmap
- Background: NRCAN CanVec



Project Location
Stephenville
NL

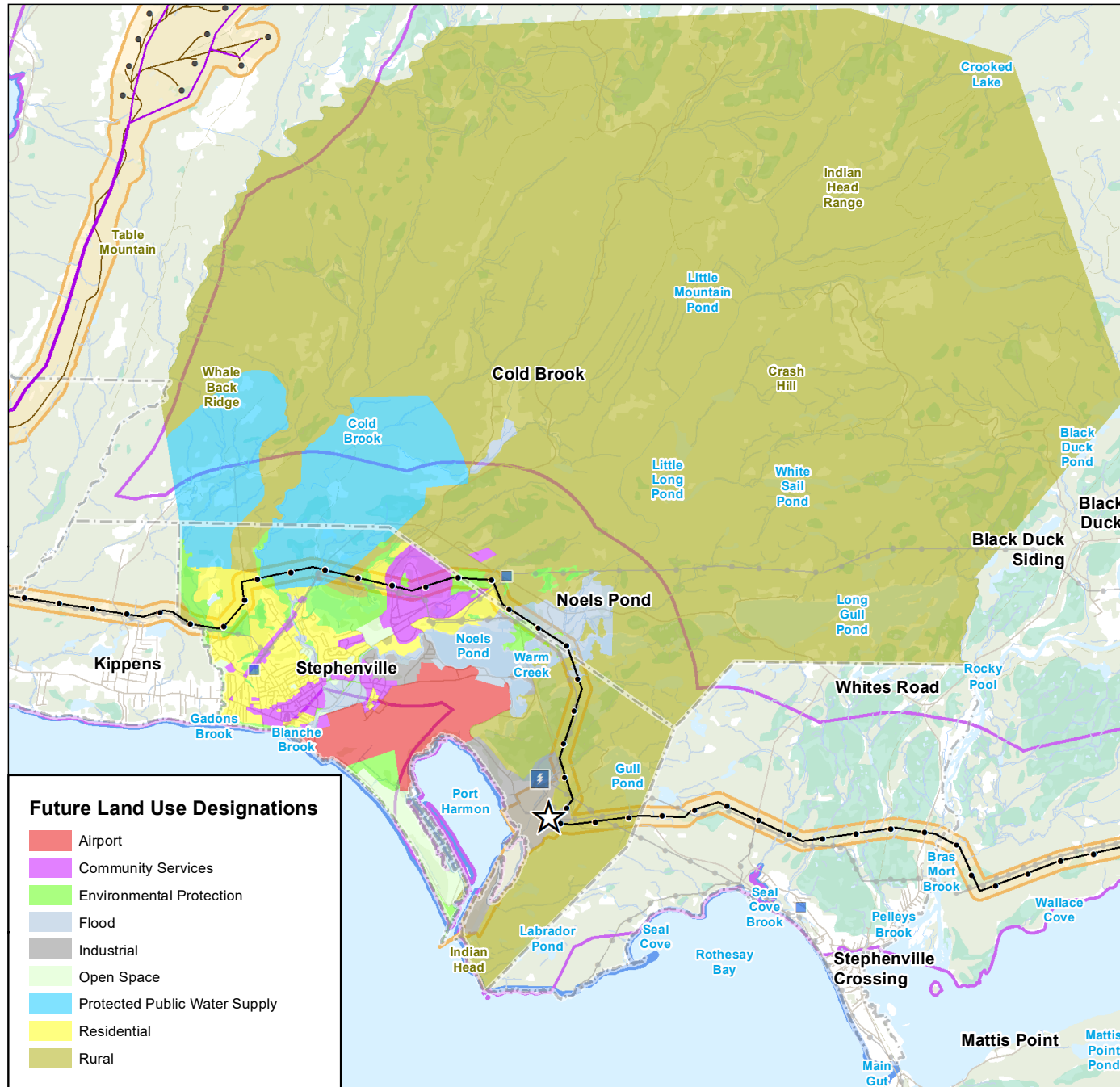
Prepared by AC on 1/23/2024
QR by AW on 2024-01-08

Client/Project
World Energy GH2
Project Nujio'qonik

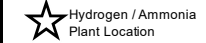
121418050_09

Figure No.
DMPA1.5A4

Land Use Zoning - Stephenville



Proposed Project Features



- Turbine Location
- Substation
- Transmission Line 230 KV
- Collector Line
- Access Road
- Project Area
- Local Assessment Area
- Regional Assessment Area

Other Features

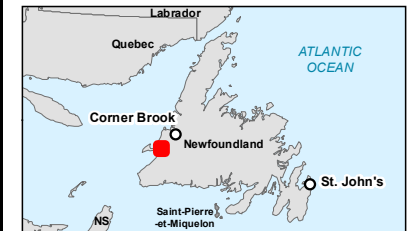
- Substation
- ⚡ Electrical Generation
- Transmission Line, Existing
- Municipal Boundary
- Road
- Road
- Resource Road / Trail
- Contour (100m)
- Watercourse
- Wetland
- Waterbody
- Forested Area



0 1.5 3 km
(At original document size of 8.5x11)
1:115,000

Notes

1. Coordinate System: NAD 1983 CSRS UTM Zone 21N
2. Data Sources: World Energy GH2, NRCAN CanVec, GovNL, Openstreetmap
3. Background: NRCAN CanVec

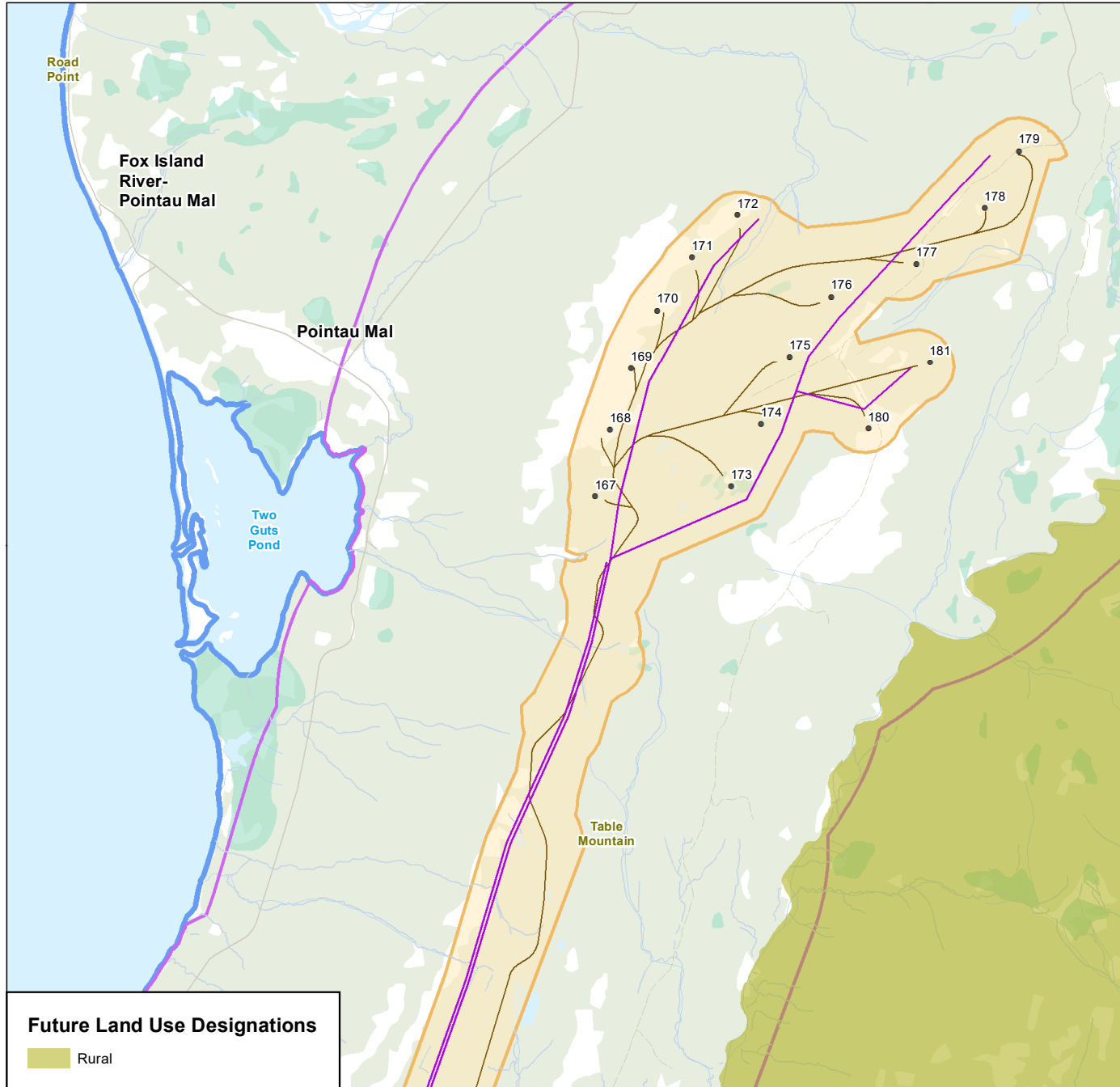


Project Location: Stephenville, NL
Prepared by AC on 1/17/2024
QR by AW on 2024-01-08

Client/Project: 121418050_09
World Energy GH2
Project Nujio'qonik

Figure No.
DMPA1.5B1

Future Land Use Designations - Stephenville



Proposed Project Features

- Turbine Location
- Substation
- Transmission Line 230 kV
- Collector Line
- Access Road
- Project Area
- Local Assessment Area
- Regional Assessment Area

Other Features

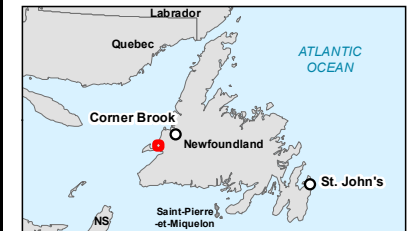
- Municipal Boundary
- Road
- Road
- Resource Road / Trail
- Contour (100m)
- Watercourse
- Wetland
- Waterbody
- Forested Area



0 0.75 1.5 km
(At original document size of 8.5x11)
1:50,000

Notes

1. Coordinate System: NAD 1983 CSRS UTM Zone 21N
2. Data Sources: World Energy GH2, NRCAN CanVec, GovNL, Openstreetmap
3. Background: NRCAN CanVec



Project Location
Stephenville
NL

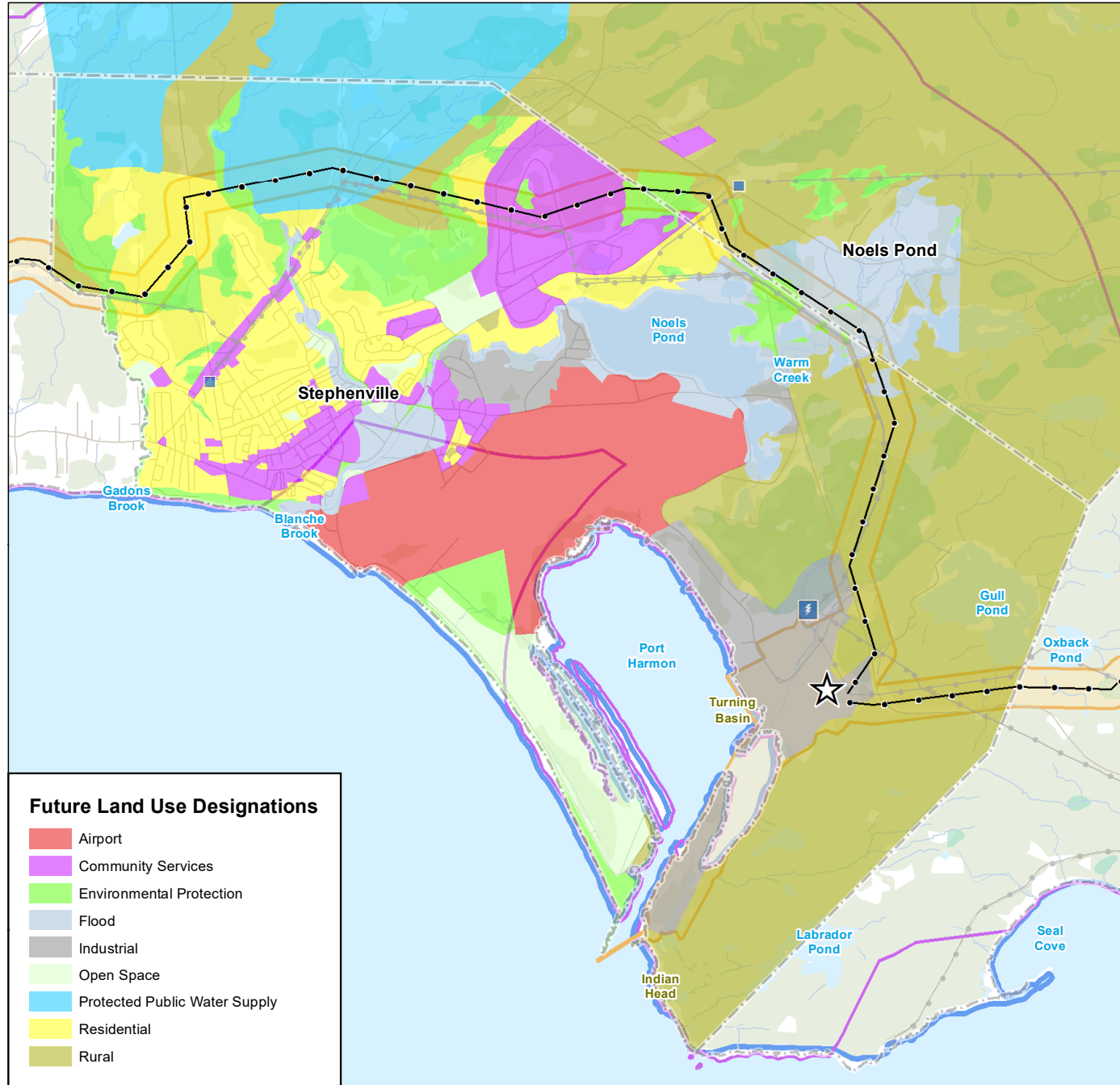
Prepared by AC on 1/17/2024
QR by AW on 2024-01-08

Client/Project
World Energy GH2
Project Nujio'qonik

121418050_09

Figure No.
DMPA1.5B2

**Future Land Use Designations -
Stephenville**



Proposed Project Features

- Hydrogen / Ammonia Plant Location
- Transmission Line 230 kV
- Project Area
- Local Assessment Area
- Regional Assessment Area

Other Features

- Substation
- Electrical
- Transmission Line, Existing
- Municipal
- Road
- Road
- Resource Road / Trail
- Contour (100m)
- Watercourse
- Waterbody
- Wetland
- Forested Area



0 0.5 1 1.5 km
(At original document size of 8.5x11)
1:55,000

Notes

- Coordinate System: NAD 1983 CSRS UTM Zone 21N
- Data Sources: World Energy GH2, NRCAN CanVec, GovNL, Openstreetmap
- Background: NRCAN CanVec

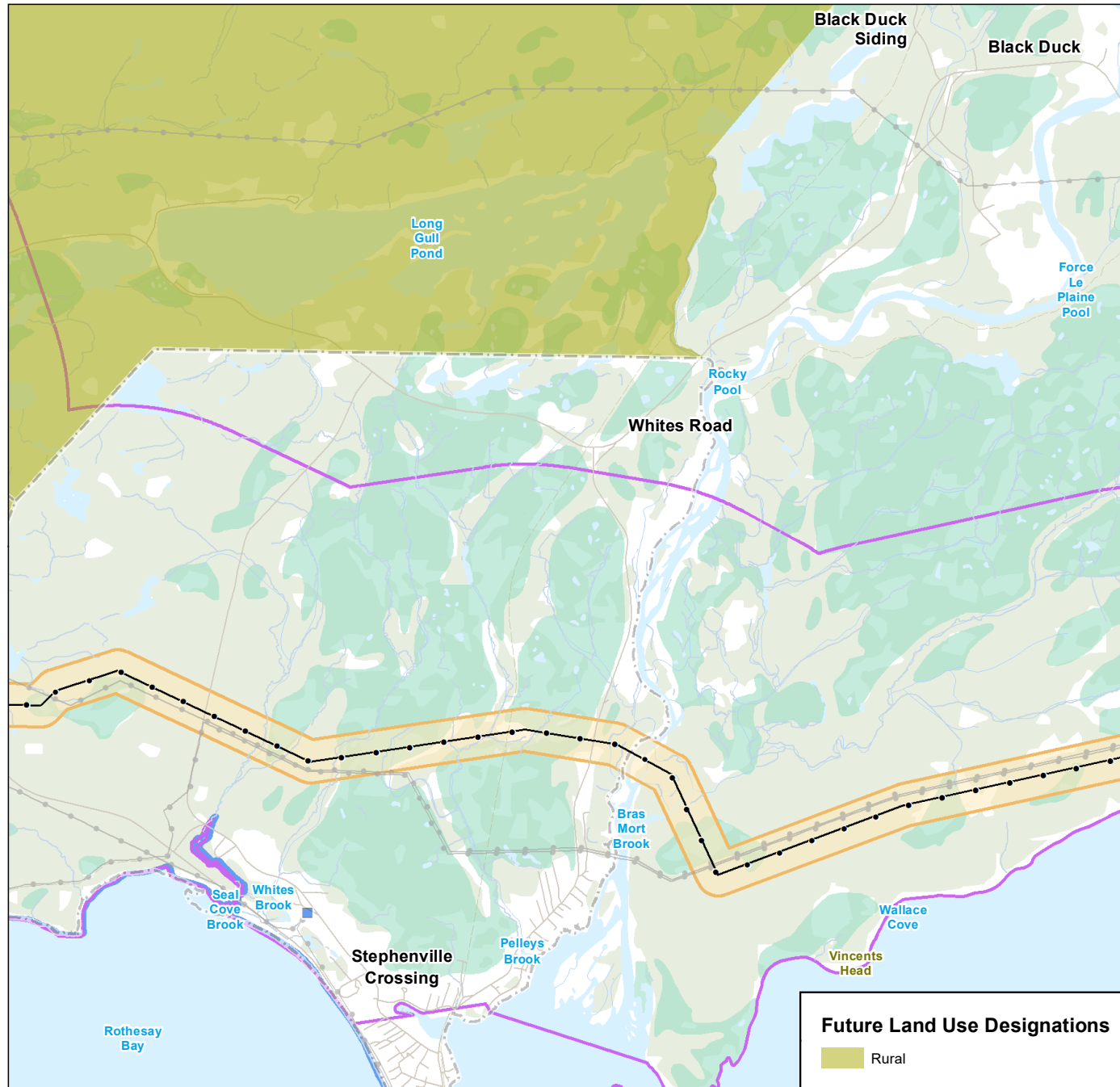


Project Location: Stephenville, NL
Prepared by AC on 1/11/2024
QR by AW on 2024-01-08

Client/Project: World Energy GH2, Project Nujlo'qonik
121418050_09

Figure No.
DMPA1.5B3

Future Land Use Designations - Stephenville



Future Land Use Designations

Rural



Proposed Project Features

- Transmission Line 230 kV
- Project Area
- Local Assessment Area
- Regional Assessment Area

Other Features

- Substation
- Transmission Line, Existing
- Municipal Boundary
- Road
- Resource Road / Trail
- Contour (100m)
- Watercourse
- Waterbody
- Wetland
- Forested Area



0 0.75 1.5 km
(At original document size of 8.5x11)
1:50,000

Notes

- Coordinate System: NAD 1983 CSRS UTM Zone 21N
- Data Sources: World Energy GH2, NRCAN CanVec, GovNL, Openstreetmap
- Background: NRCAN CanVec



Project Location
Stephenville
NL

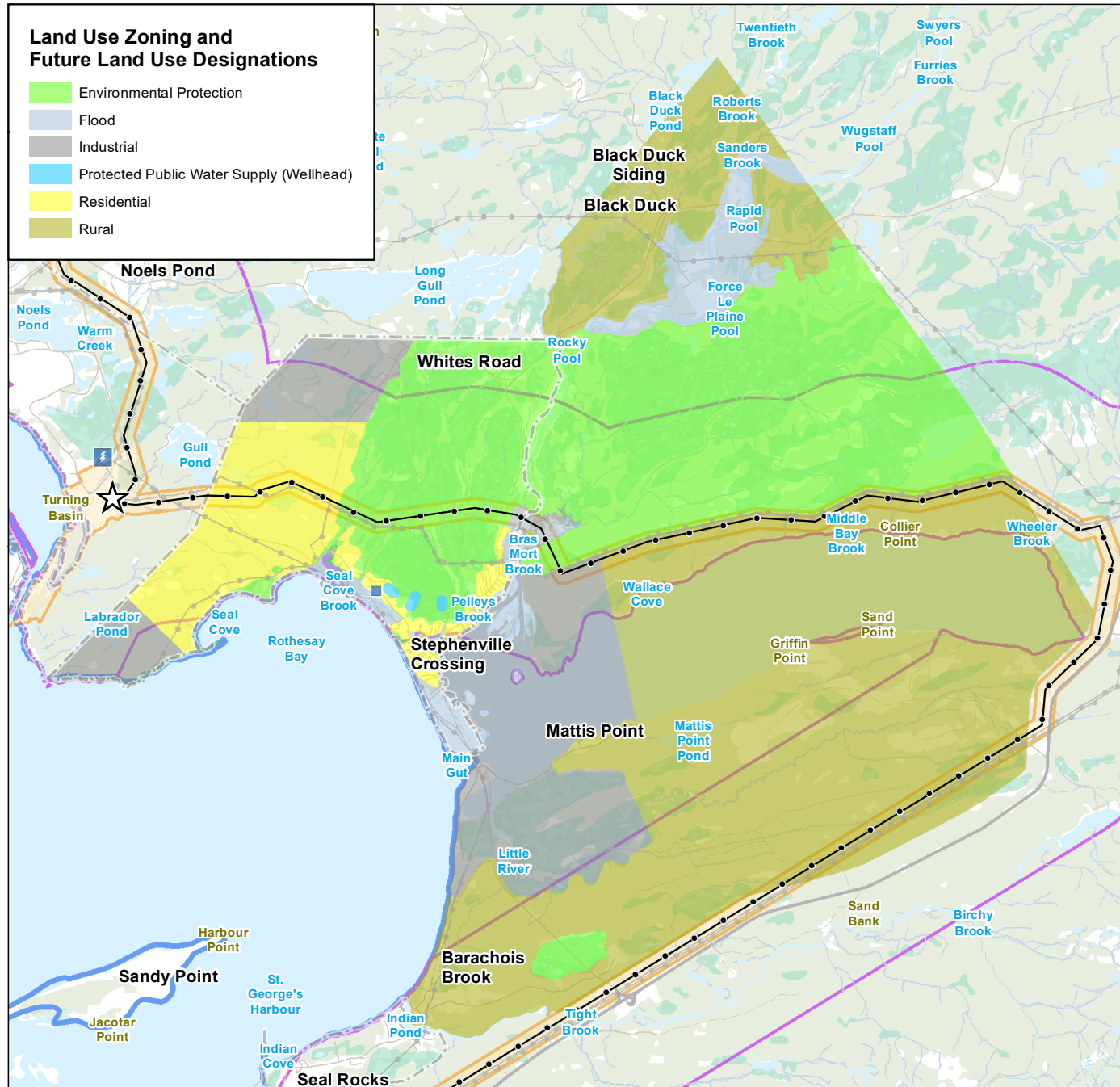
Prepared by AC on 1/11/2024
QR by AW on 2024-01-08

Client/Project
World Energy GH2
Project Nujio'qonik

121418050_09

Figure No.
DMPA1.5B4

**Future Land Use Designations -
Stephenville**



Proposed Project Features

- ★ Hydrogen / Ammonia Plant Location
- Transmission Line 230 kV
- Project Area
- Local Assessment Area
- Regional Assessment Area

Other Features

- Substation
- ⚡ Electrical
- Transmission Line, Existing
- Municipal
- Trans-Canada
- Road
- Resource Road / Trail
- Contour (100m)
- Watercourse
- Waterbody
- Wetland
- Forested Area



0 1.5 3 km
(At original document size of 8.5x11)
1:110,000

Notes

1. Coordinate System: NAD 1983 CSRS UTM Zone 21N
2. Data Sources: World Energy GH2, NRCAN CanVec, GovNL, Openstreetmap
3. Background: NRCAN CanVec



Project Location: Stephenville, NL
Prepared by AC on 1/23/2024
QR by AW on 2024-01-08

Client/Project: World Energy GH2
Project Nujio'qonik
121418050_09

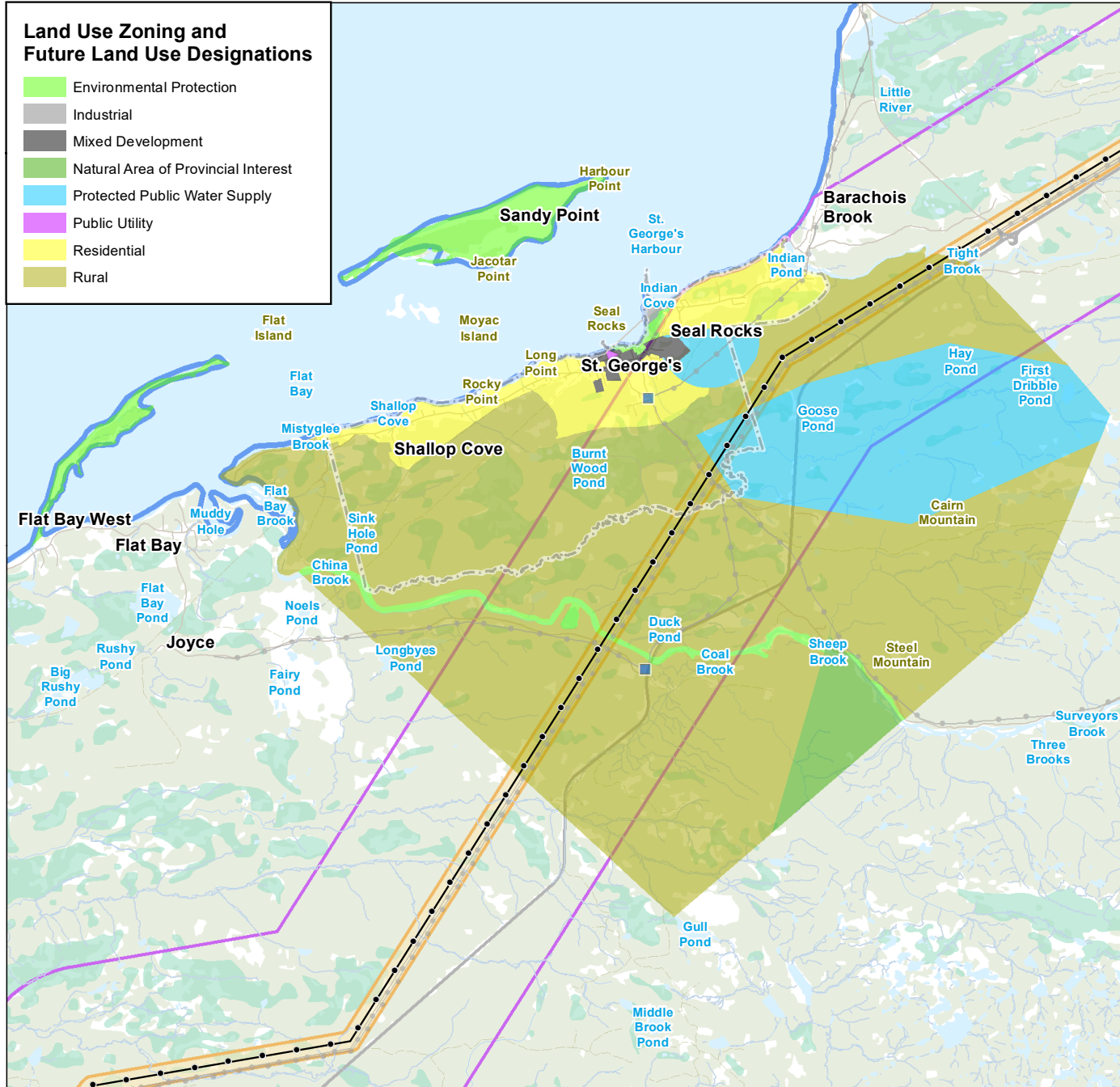
Figure No.
DMPA1.6

Land Use Zoning and Future Land Use Designations - Stephenville Crossing

\\lca0151-ppfs01\work_group\12141active\121417233\03_data\gis_cad\gis_data\mapping\mxd\general\GIS_Amendment\Ch09_MPA\121418050_09_DMPA1-7_LUZ_FLU_SIGeorges.mxd Revised: 2024-01-23 By: aculf

Land Use Zoning and Future Land Use Designations

- Environmental Protection
- Industrial
- Mixed Development
- Natural Area of Provincial Interest
- Protected Public Water Supply
- Public Utility
- Residential
- Rural



Proposed Project Features

- Transmission Line 230 kV
- Project Area
- Local Assessment Area
- Regional Assessment Area

Other Features

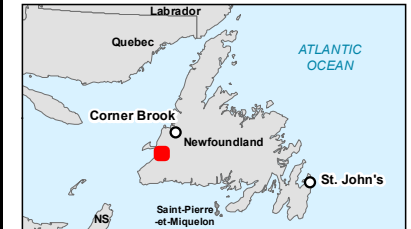
- Substation
- Transmission Line, Existing
- Municipal Boundary
- Trans-Canada Highway
- Road
- Resource Road / Trail
- Contour (100m)
- Watercourse
- Wetland
- Waterbody
- Forested Area



0 1.5 3 km
(At original document size of 8.5x11)
1:110,000

Notes

- Coordinate System: NAD 1983 CSRS UTM Zone 21N
- Data Sources: World Energy GH2, NRCAN CanVec, GovNL, Openstreetmap
- Background: NRCAN CanVec



Project Location: Stephenville, NL
Prepared by AC on 1/23/2024
QR by AW on 2024-01-08

Client/Project: World Energy GH2
Project Nujio'qonik

Figure No.
DMPA1.7

Land Use Zoning and Future Land Use Designations - St. George's

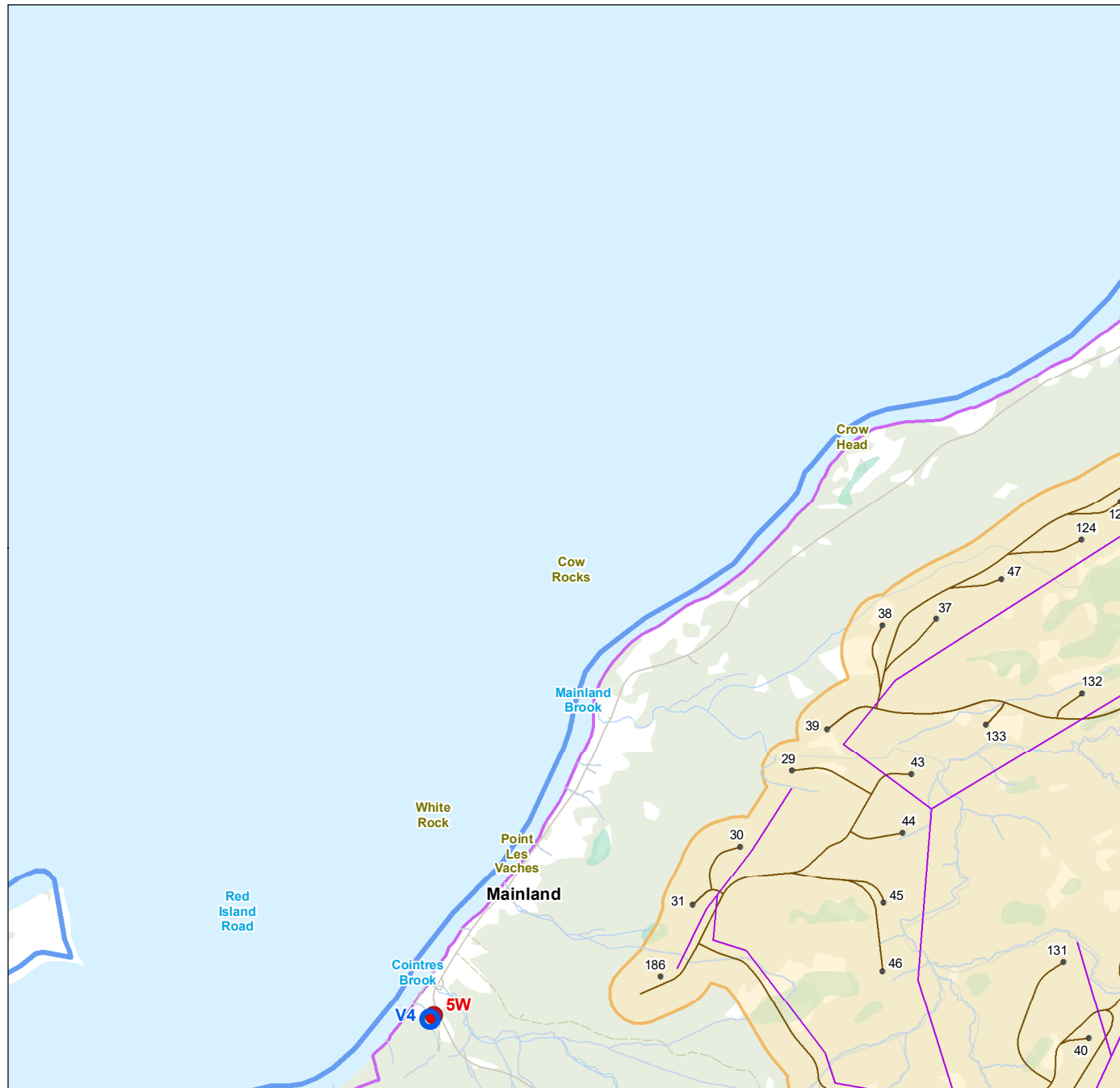
Disclaimer: This document has been prepared based on information provided by others as cited in the Notes section. Stantec has not verified the accuracy and/or completeness of this information and shall not be responsible for any errors or omissions which may be incorporated herein as a result. Stantec assumes no responsibility for data supplied in electronic format, and the recipient accepts full responsibility for verifying the accuracy and completeness of the data.

Appendix DMPA10-A

Noise and Vibration Monitoring Locations

Project Nujio'qonik: Amendment to the Environmental Impact Statement

V:\1214\active\12141723303_data\gis_cad\gis_data\mapping\mxd\general\IEIS_Amendment\CH09_MPA121418050_09_DMPA10-A_Noise_and_Vibration_Monitoring_Locations_Mapbook.mxd
Revised: 2024-01-23 By: mblackwood



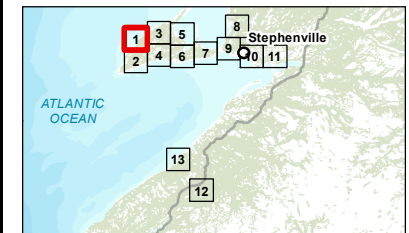
- | | |
|----------------------------------|-----------------------|
| Vibration Monitoring Locations | Other Features |
| Noise Monitoring Location | Road |
| | Road |
| Proposed Project Features | Resource Road / Trail |
| Turbine Location | Watercourse |
| Collector Line | Waterbody |
| Access Road | Wetland |
| Project Area | Forested Area |
| Local Assessment Area | |
| Regional Assessment Area | |



0 0.75 1.5 km
(At original document size of 8.5x11)
1:50,000

Notes

1. Coordinate System: NAD 1983 CSRS UTM Zone 21N
2. Data Sources: World Energy GH2, NRCAN CanVec, GovNL, Openstreetmap
3. Background: NRCAN CanVec



Project Location: Stephenville, NL
Prepared by AC on 2024-01-23
QR by AW on 2024-01-22

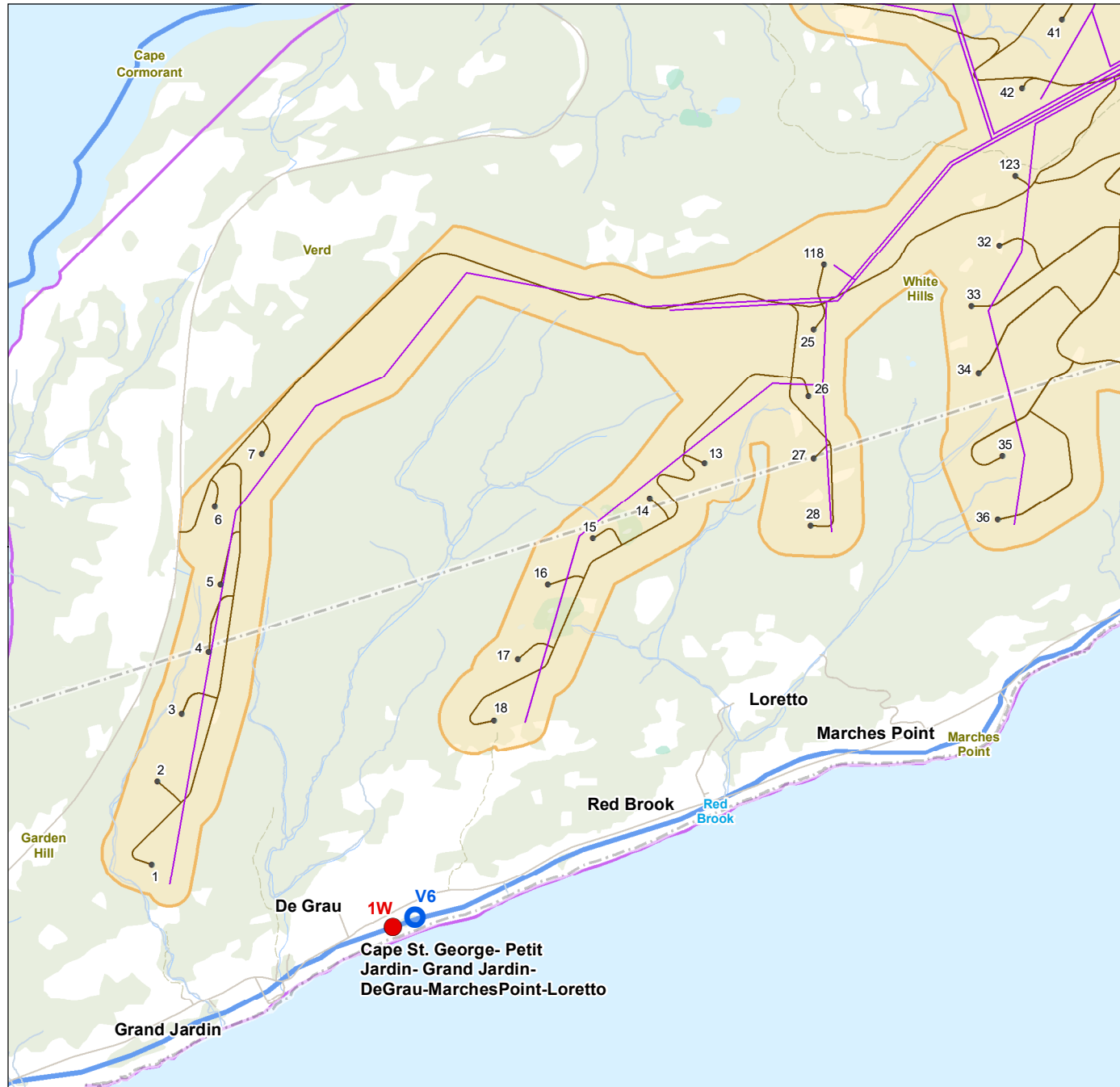
Client/Project: 121418050_09
World Energy GH2
Project Nujio'qonik

Figure No.
DMPA10-A

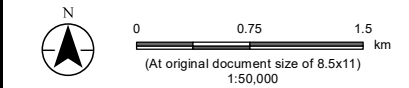
Noise and Vibration Monitoring Locations

Page 1 of 13

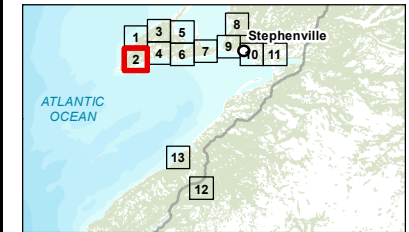
Disclaimer: This document has been prepared based on information provided by others as cited in the Notes section. Stantec has not verified the accuracy and/or completeness of this information and shall not be responsible for any errors or omissions which may be incorporated herein as a result. Stantec assumes no responsibility for data supplied in electronic format, and the recipient accepts full responsibility for verifying the accuracy and completeness of the data.



- Vibration Monitoring Locations
- Noise Monitoring Location
- Collector Line
- Access Road
- Project Area
- Local Assessment Area
- Regional Assessment Area
- Municipal Boundary
- Road
- Road
- Resource Road / Trail
- Watercourse
- Waterbody
- Wetland
- Forested Area



- Notes**
1. Coordinate System: NAD 1983 CSRS UTM Zone 21N
 2. Data Sources: World Energy GH2, NRCAN CanVec, GovNL, Openstreetmap
 3. Background: NRCAN CanVec



Project Location
Stephenville
NL

Prepared by AC on 2024-01-23
QR by AW on 2024-01-22

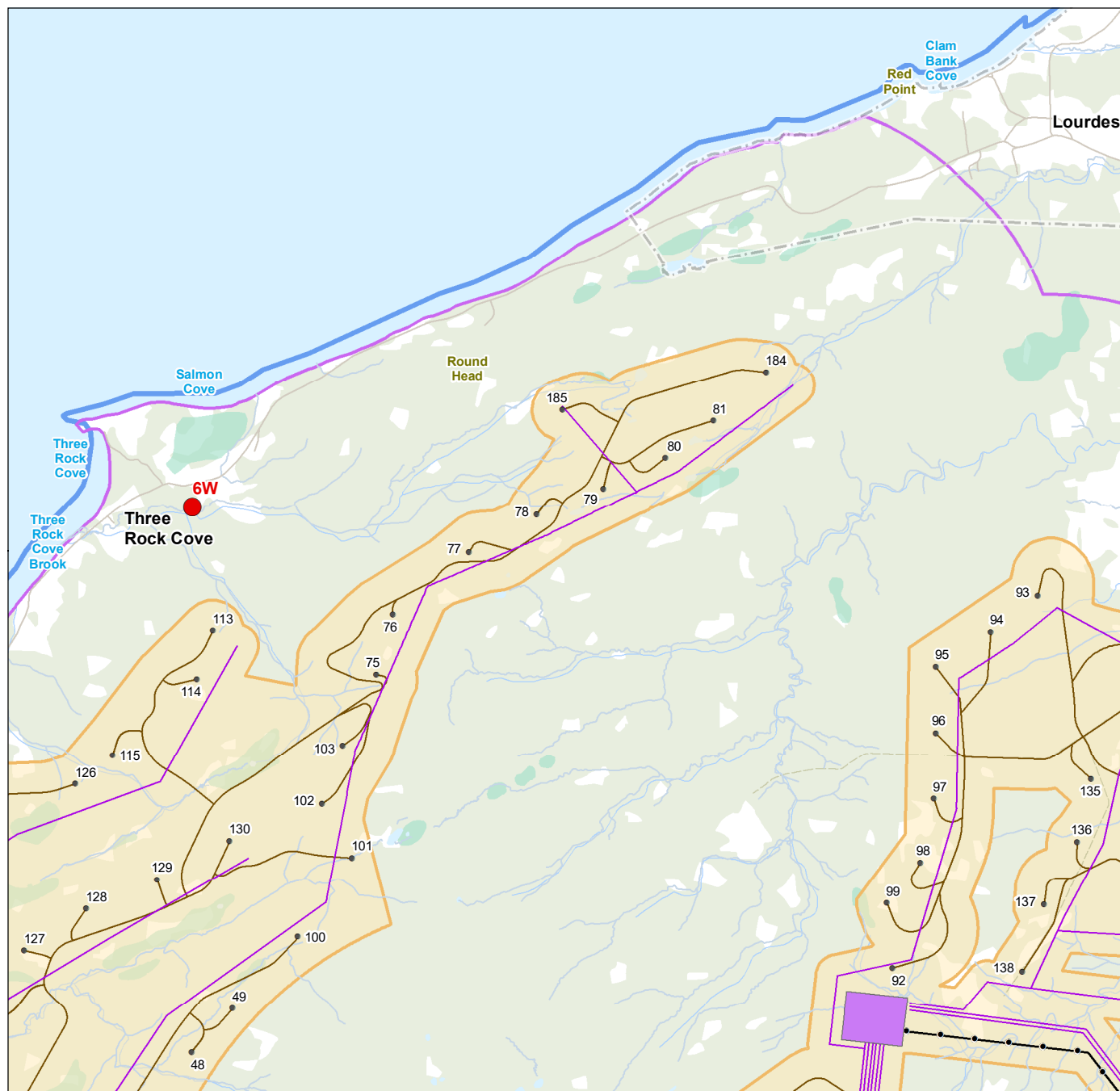
Client/Project
World Energy GH2
Project Nujio'qonik

121418050_09

Figure No.
DMPA10-A

Noise and Vibration Monitoring Locations

V:\1214\active\12141723303_data\gis_data\general\IEIS_Amendment\CH09_MPA121418050_09_DMPA10-A_Noise_and_Vibration_Monitoring_Locations_Mapbook.mxd
Revised: 2024-01-23 By: mblackwood



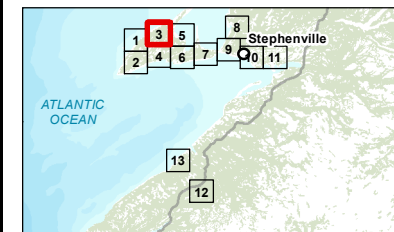
- Noise Monitoring Location**
- Noise Monitoring Location
- Proposed Project Features**
- Turbine Location
 - Substation
 - Transmission Line 230 kV
 - Collector Line
 - Access Road
 - Project Area
 - Local Assessment Area
 - Regional Assessment Area
- Other Features**
- Municipal Boundary
 - Road
 - Road
 - Resource Road / Trail
 - Watercourse
 - Waterbody
 - Wetland
 - Forested Area



0 0.75 1.5 km
(At original document size of 8.5x11)
1:50,000

Notes

1. Coordinate System: NAD 1983 CSRS UTM Zone 21N
2. Data Sources: World Energy GH2, NRCAN CanVec, GovNL, Openstreetmap
3. Background: NRCAN CanVec



Project Location
Stephenville
NL

Prepared by AC on 2024-01-23
QR by AW on 2024-01-22

Client/Project
World Energy GH2
Project Nujio'qonik

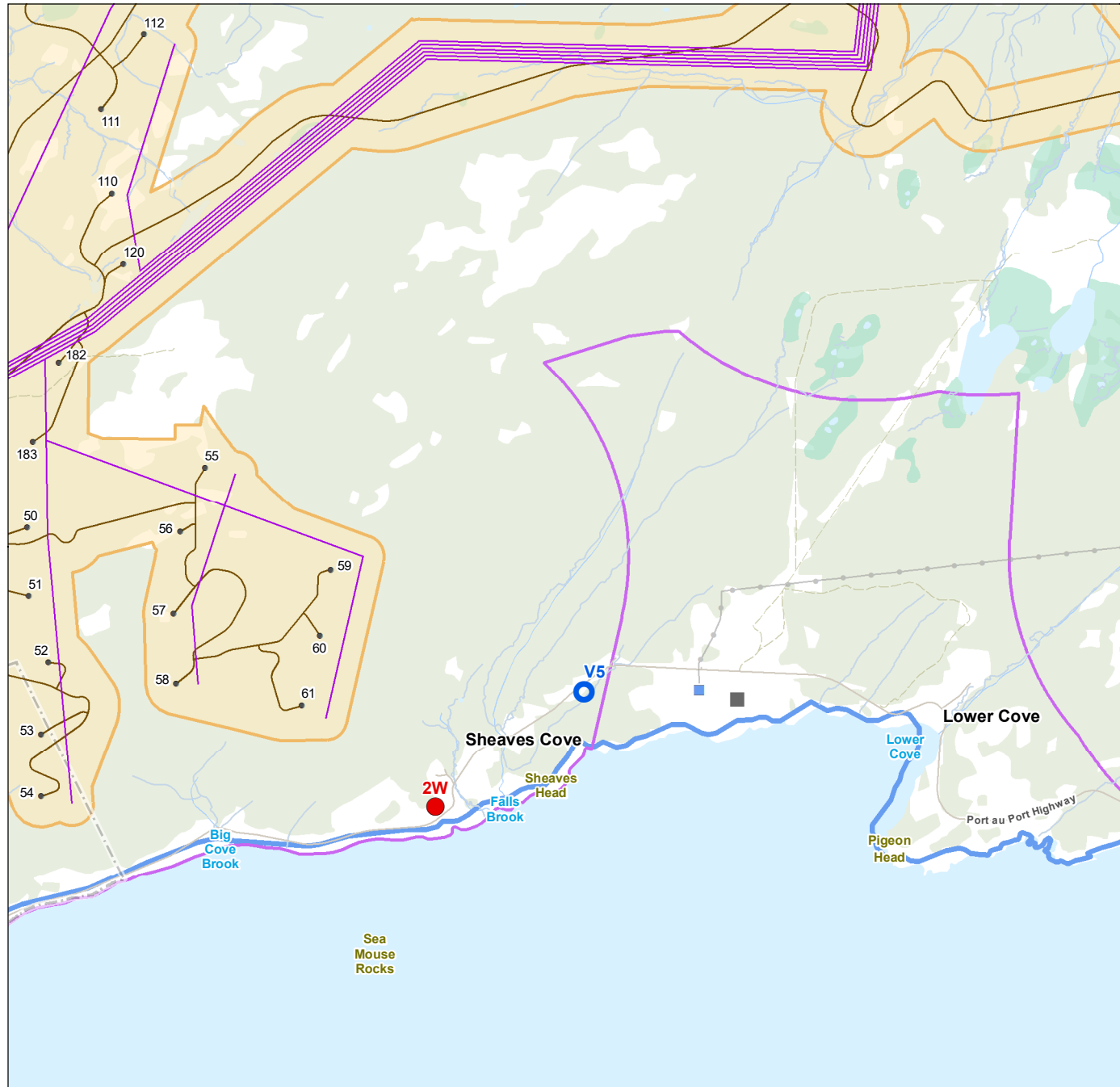
121418050_09

Figure No.
DMPA10-A

Noise and Vibration Monitoring Locations

Page 3 of 13

Disclaimer: This document has been prepared based on information provided by others as cited in the Notes section. Stantec has not verified the accuracy and/or completeness of this information and shall not be responsible for any errors or omissions which may be incorporated herein as a result. Stantec assumes no responsibility for data supplied in electronic format, and the recipient accepts full responsibility for verifying the accuracy and completeness of the data.



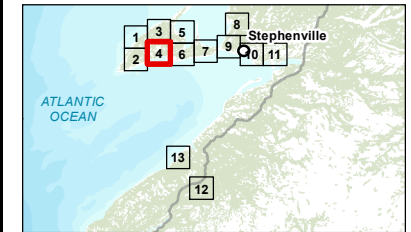
- Vibration Monitoring Locations
- Noise Monitoring Location
- Proposed Project Features**
 - Turbine Location
 - Transmission Line 230 kV
 - Collector Line
 - Access Road
 - Project Area
 - Local Assessment Area
 - Regional Assessment Area
- Other Features**
 - Quarry
 - Substation
 - Transmission Line, Existing
 - Municipal Boundary
 - Road
 - Road
 - Resource Road / Trail
 - Watercourse
 - Waterbody
 - Wetland
 - Forested Area



0 0.75 1.5 km
(At original document size of 8.5x11)
1:50,000

Notes

1. Coordinate System: NAD 1983 CSRS UTM Zone 21N
2. Data Sources: World Energy GH2, NRCAN CanVec, GovNL, Openstreetmap
3. Background: NRCAN CanVec



Project Location
Stephenville
NL

Prepared by AC on 2024-01-23
QR by AW on 2024-01-22

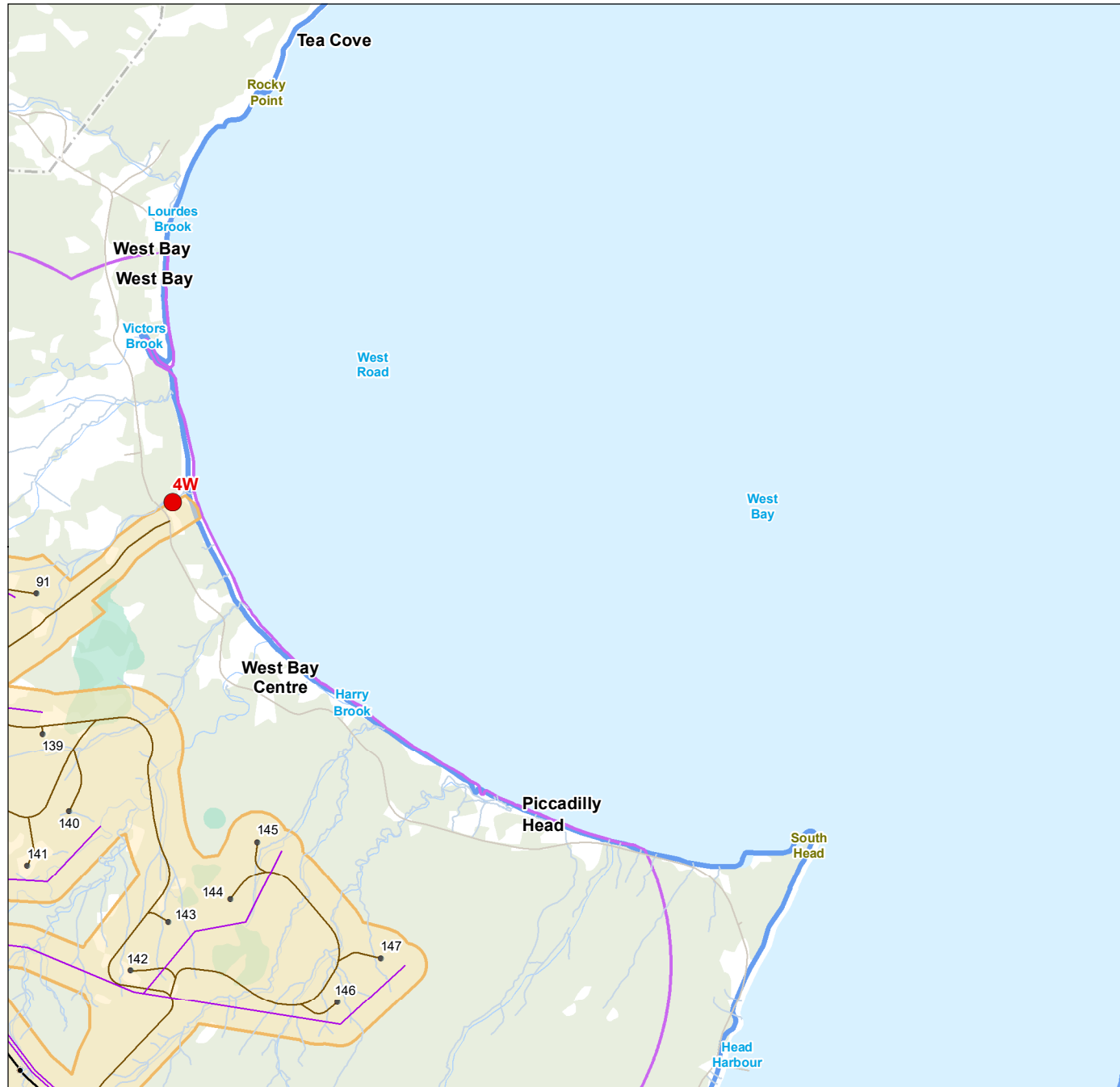
Client/Project
World Energy GH2
Project Nujio'qonik

121418050_09

Figure No.
DMPA10-A

Noise and Vibration Monitoring Locations

V:\1214\active\12141723303_data\gis_cad\gis_data\mapping\mxd\general\IEIS_Amendment\CH09_MPA121418050_09_DMPA10-A_Noise_and_Vibration_Monitoring_Locations_Mapbook.mxd
Revised: 2024-01-23 By: mblackwood



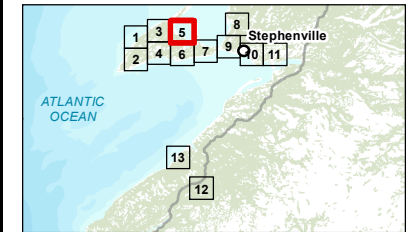
- Noise Monitoring Location**
- Noise Monitoring Location
- Proposed Project Features**
- Turbine Location
 - Transmission Line 230 kV
 - Collector Line
 - Access Road
 - Project Area
 - Local Assessment Area
 - Regional Assessment Area
- Other Features**
- Municipal Boundary
 - Road
 - Road
 - Resource Road / Trail
 - Watercourse
 - Waterbody
 - Wetland
 - Forested Area



0 0.75 1.5 km
(At original document size of 8.5x11)
1:50,000

Notes

1. Coordinate System: NAD 1983 CSRS UTM Zone 21N
2. Data Sources: World Energy GH2, NRCAN CanVec, GovNL, Openstreetmap
3. Background: NRCAN CanVec



Project Location: Stephenville NL
Prepared by AC on 2024-01-23
QR by AW on 2024-01-22

Client/Project: 121418050_09
World Energy GH2
Project Nujio'qonik

Figure No.
DMPA10-A

Noise and Vibration Monitoring Locations

Page 5 of 13

Disclaimer: This document has been prepared based on information provided by others as cited in the Notes section. Stantec has not verified the accuracy and/or completeness of this information and shall not be responsible for any errors or omissions which may be incorporated herein as a result. Stantec assumes no responsibility for data supplied in electronic format, and the recipient accepts full responsibility for verifying the accuracy and completeness of the data.

V:\1214\active\12141723303_data\gis_cad\gis_data\mapping\mxd\general\IEIS_Amendment\CH09_MPA121418050_09_DMPA10-A_Noise_and_Vibration_Monitoring_Locations_Mapbook.mxd
Revised: 2024-01-23 By: mblackwood



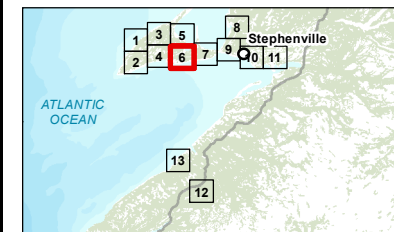
- Noise Monitoring Location**
- Noise Monitoring Location
- Proposed Project Features**
- Turbine Location
 - Transmission Line 230 kV
 - Collector Line
 - Access Road
 - Project Area
 - Local Assessment Area
 - Regional Assessment Area
- Other Features**
- Substation
 - Transmission Line, Existing
 - Road
 - Road
 - Resource Road / Trail
 - Watercourse
 - Waterbody
 - Wetland
 - Forested Area



0 0.75 1.5 km
(At original document size of 8.5x11)
1:50,000

Notes

1. Coordinate System: NAD 1983 CSRS UTM Zone 21N
2. Data Sources: World Energy GH2, NRCAN CanVec, GovNL, Openstreetmap
3. Background: NRCAN CanVec



Project Location
Stephenville
NL

Prepared by AC on 2024-01-23
QR by AW on 2024-01-22

Client/Project
World Energy GH2
Project Nujio'qonik

121418050_09

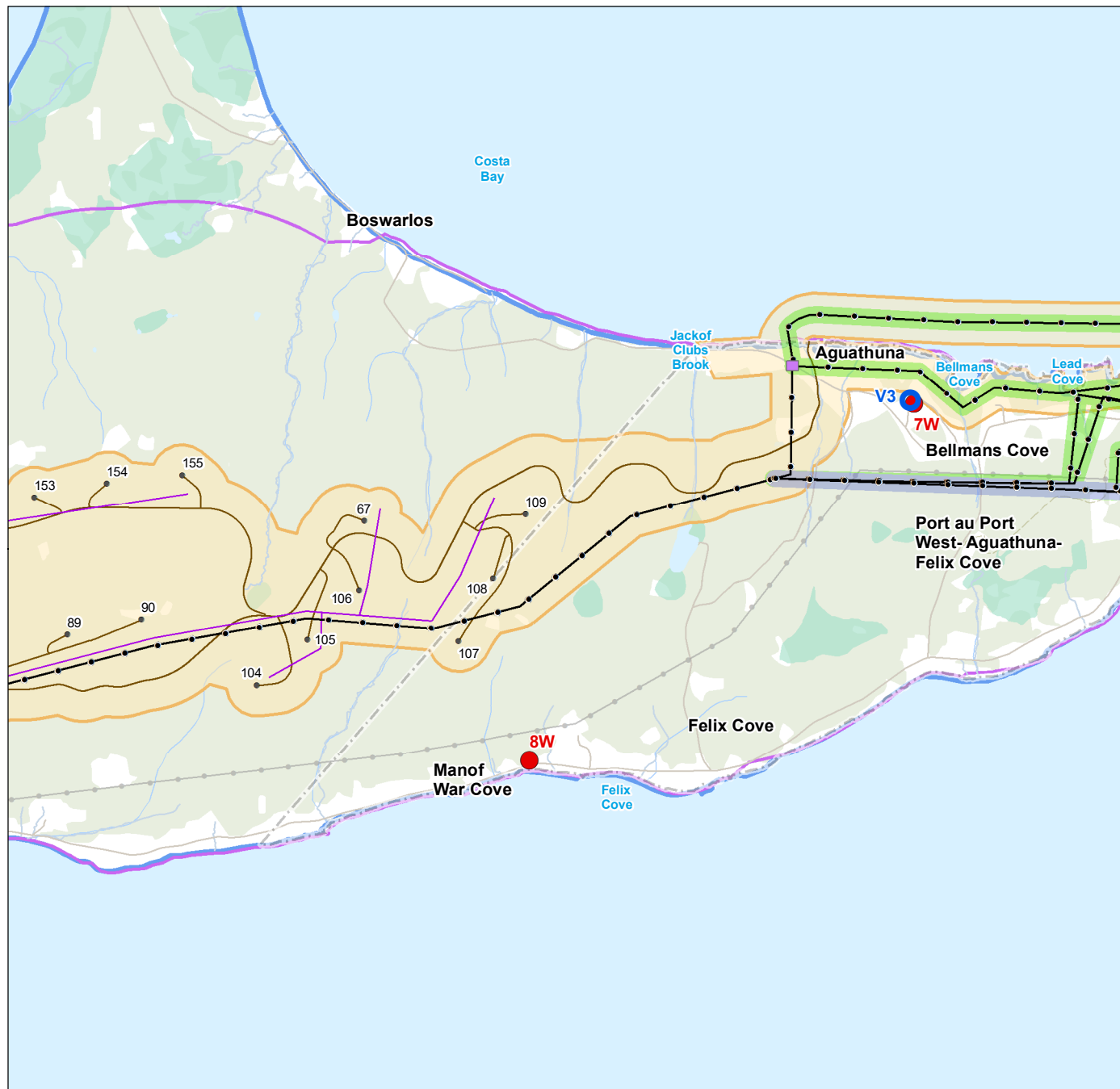
Figure No.
DMPA10-A

**Noise and Vibration Monitoring
Locations**

Page 6 of 13

Disclaimer: This document has been prepared based on information provided by others as cited in the Notes section. Stantec has not verified the accuracy and/or completeness of this information and shall not be responsible for any errors or omissions which may be incorporated herein as a result. Stantec assumes no responsibility for data supplied in electronic format, and the recipient accepts full responsibility for verifying the accuracy and completeness of the data.

V:\1214\active\12141723303_data\gis_cad\gis_data\mapping\mxd\general\IEIS_Amendment\CH09_MPA121418050_09_DMPA10-A_Noise_and_Vibration_Monitoring_Locations_Mapbook.mxd
Revised: 2024-01-23 By: mblackwood



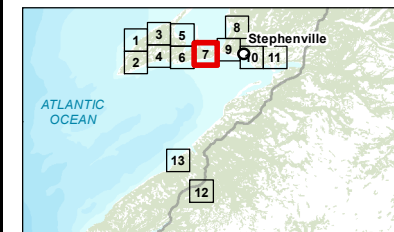
- Legend**
- Vibration Monitoring Locations**
 - Blue circle with dot
 - Noise Monitoring Location**
 - Red circle with dot
 - Proposed Project Features**
 - Turbine Location (black dot)
 - Substation (purple square)
 - Transmission Line 230 kV (black line with dots)
 - Port au Port Interconnection**
 - Proposed Route (purple line)
 - Alternate Route (green line)
 - Other Features**
 - Transmission Line, Existing (grey line)
 - Municipal Boundary (dashed line)
 - Road (brown line)
 - Resource Road / Trail (dashed brown line)
 - Watercourse (blue line)
 - Waterbody (light blue area)
 - Wetland (green area)
 - Forested Area (light green area)
 - Collector Line** (purple line)
 - Access Road** (brown line)
 - Project Area** (orange outline)
 - Local Assessment Area** (purple outline)
 - Regional Assessment Area** (blue outline)



0 0.75 1.5 km
(At original document size of 8.5x11)
1:50,000

Notes

1. Coordinate System: NAD 1983 CSRS UTM Zone 21N
2. Data Sources: World Energy GH2, NRCAN CanVec, GovNL, Openstreetmap
3. Background: NRCAN CanVec



Project Location
Stephenville
NL

Prepared by AC on 2024-01-23
QR by AW on 2024-01-22

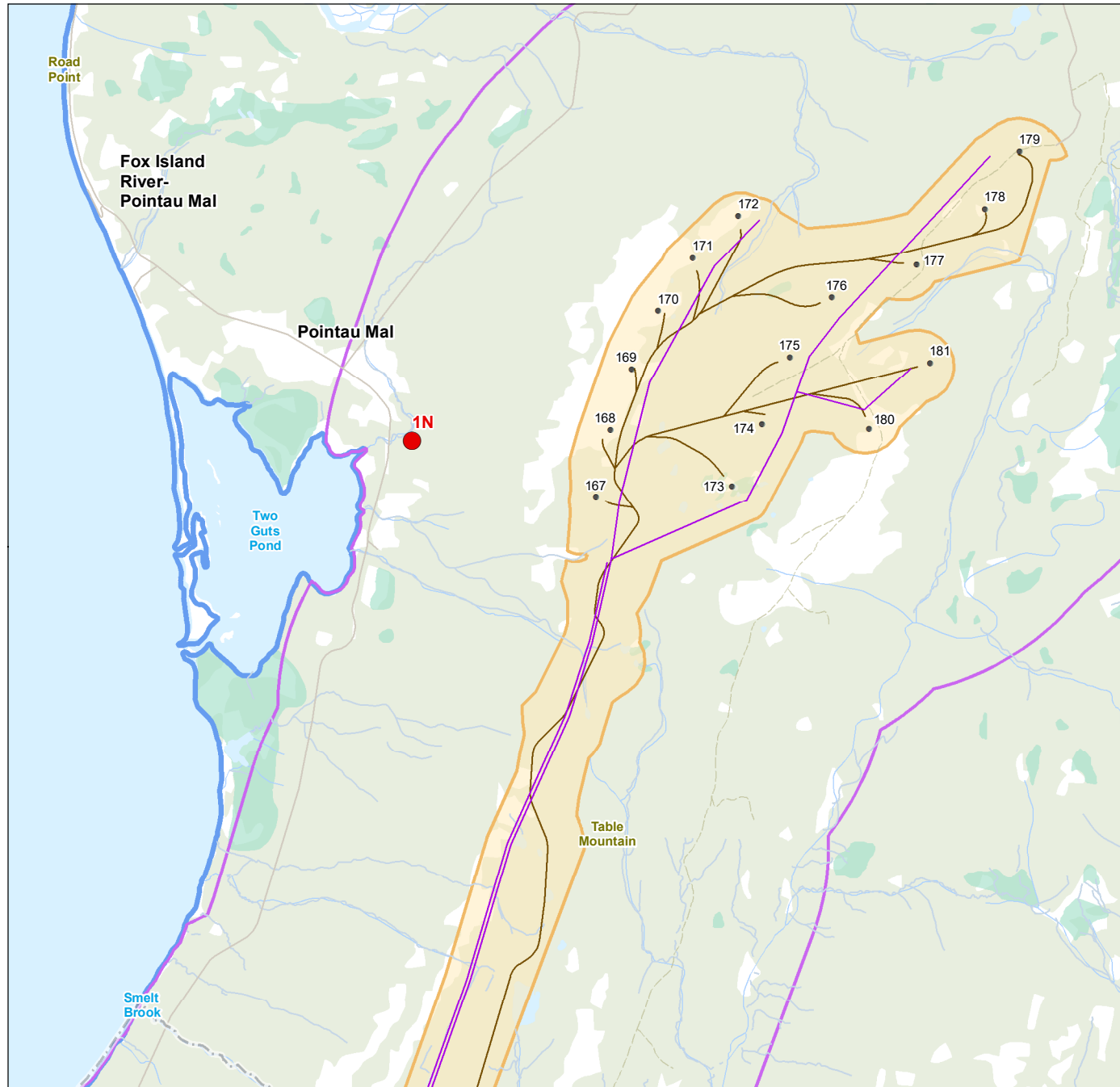
Client/Project
World Energy GH2
Project Nujio'qonik

121418050_09

Figure No.
DMPA10-A

Noise and Vibration Monitoring Locations

V:\1214\active\12141723303_data\gis_data\mapping\mxd\general\IEIS_Amendment\CH09_MPA121418050_09_DMPA10-A_Noise_and_Vibration_Monitoring_Locations_Mapbook.mxd
Revised: 2024-01-23 By: mblackwood



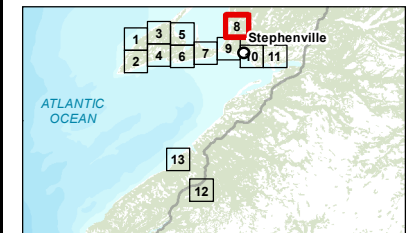
- | | |
|--|--|
| Noise Monitoring Location
● Turbine Location
Collector Line
Access Road
Project Area
Local Assessment Area
Regional Assessment Area | Other Features
Municipal Boundary
Road
Road
Resource Road / Trail
Watercourse
Waterbody
Wetland
Forested Area |
|--|--|



0 0.75 1.5 km
(At original document size of 8.5x11)
1:50,000

Notes

1. Coordinate System: NAD 1983 CSRS UTM Zone 21N
2. Data Sources: World Energy GH2, NRCAN CanVec, GovNL, Openstreetmap
3. Background: NRCAN CanVec



Project Location
Stephenville
NL

Prepared by AC on 2024-01-23
QR by AW on 2024-01-22

Client/Project
World Energy GH2
Project Nujio'qonik

121418050_09

Figure No.
DMPA10-A

Noise and Vibration Monitoring Locations

Page 8 of 13

Disclaimer: This document has been prepared based on information provided by others as cited in the Notes section. Stantec has not verified the accuracy and/or completeness of this information and shall not be responsible for any errors or omissions which may be incorporated herein as a result. Stantec assumes no responsibility for data supplied in electronic format, and the recipient accepts full responsibility for verifying the accuracy and completeness of the data.

V:\1214\active\12141723303_data\gis_data\general\GIS_Amendments\CH09_MPA121418050_09_DMPA10-A_Noise_and_Vibration_Monitoring_Locations_Mapbook.mxd
Revised: 2024-01-23 By: mblackwood



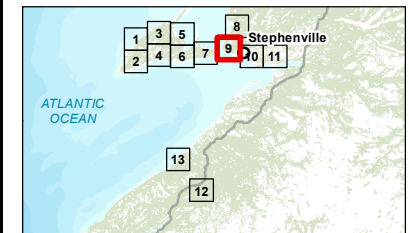
- Noise Monitoring Location**
- Red dot
- Substation**
- Purple square
- Transmission Line 230 kV**
- Black line with dots
- Port au Port Interconnection**
- Proposed Route: Blue line with dots
 - Alternate Route: Green line with dots
 - Collector Line: Purple line
 - Access Road: Brown line
 - Project Area: Orange shaded area
 - Local Assessment Area: Purple shaded area
 - Regional Assessment Area: Blue shaded area
- Other Features**
- Substation: Blue square
 - Transmission Line, Existing: Grey line
 - Municipal Boundary: Dashed line
 - Road: Grey line
 - Road: Brown line
 - Resource Road / Trail: Dashed line
 - Watercourse: Blue line
 - Waterbody: Light blue area
 - Wetland: Green area
 - Forested Area: Light green area



0 0.75 1.5 km
(At original document size of 8.5x11)
1:50,000

Notes

- Coordinate System: NAD 1983 CSRS UTM Zone 21N
- Data Sources: World Energy GH2, NRCAN CanVec, GovNL, Openstreetmap
- Background: NRCAN CanVec



Project Location
Stephenville
NL

Prepared by AC on 2024-01-23
QR by AW on 2024-01-22

Client/Project
World Energy GH2
Project Nujio'qonik

121418050_09

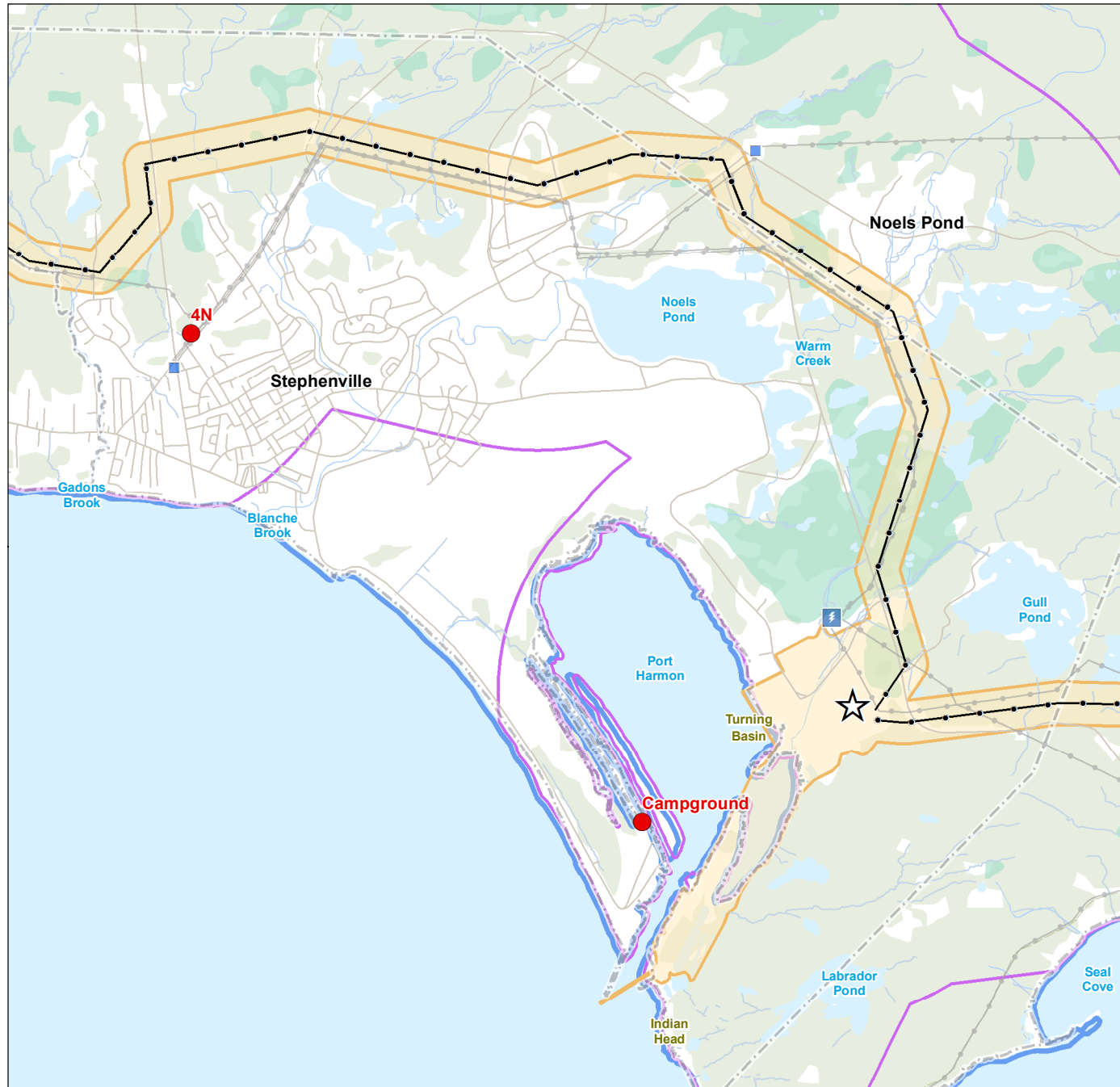
Figure No.
DMPA10-A

Noise and Vibration Monitoring Locations

Page 9 of 13

Disclaimer: This document has been prepared based on information provided by others as cited in the Notes section. Stantec has not verified the accuracy and/or completeness of this information and shall not be responsible for any errors or omissions which may be incorporated herein as a result. Stantec assumes no responsibility for data supplied in electronic format, and the recipient accepts full responsibility for verifying the accuracy and completeness of the data.

V:\1214\active\12141723303_data\gis_data\general\GIS_Amendment\CH09_MPA121418050_09_DMPA10-A_Noise_and_Vibration_Monitoring_Locations_Mapbook.mxd
Revised: 2024-01-23 By: mblackwood



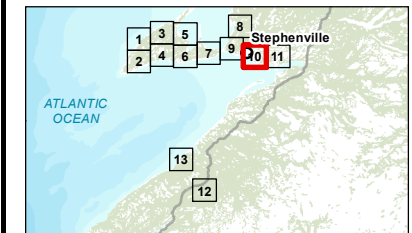
- Noise Monitoring Location**
- Red dot
- Transmission Line 230 kV**
- Black line with dots
- Project Area**
- Orange outline
- Local Assessment Area**
- Purple outline
- Regional Assessment Area**
- Blue outline
- Other Features**
- Substation (Blue square)
 - Electrical Generation (Lightning bolt symbol)
 - Transmission Line, Existing (Grey line)
 - Municipal Boundary (Dashed line)
 - Road (Thin grey line)
 - Road (Thick grey line)
 - Resource Road / Trail (Dashed grey line)
 - Watercourse (Blue line)
 - Waterbody (Blue area)
 - Wetland (Green area)
 - Forested Area (Light green area)



0 0.75 1.5 km
(At original document size of 8.5x11)
1:50,000

Notes

- Coordinate System: NAD 1983 CSRS UTM Zone 21N
- Data Sources: World Energy GH2, NRCAN CanVec, GovNL, Openstreetmap
- Background: NRCAN CanVec



Project Location
Stephenville
NL

Prepared by AC on 2024-01-23
QR by AW on 2024-01-22

Client/Project
World Energy GH2
Project Nujio'qonik

121418050_09

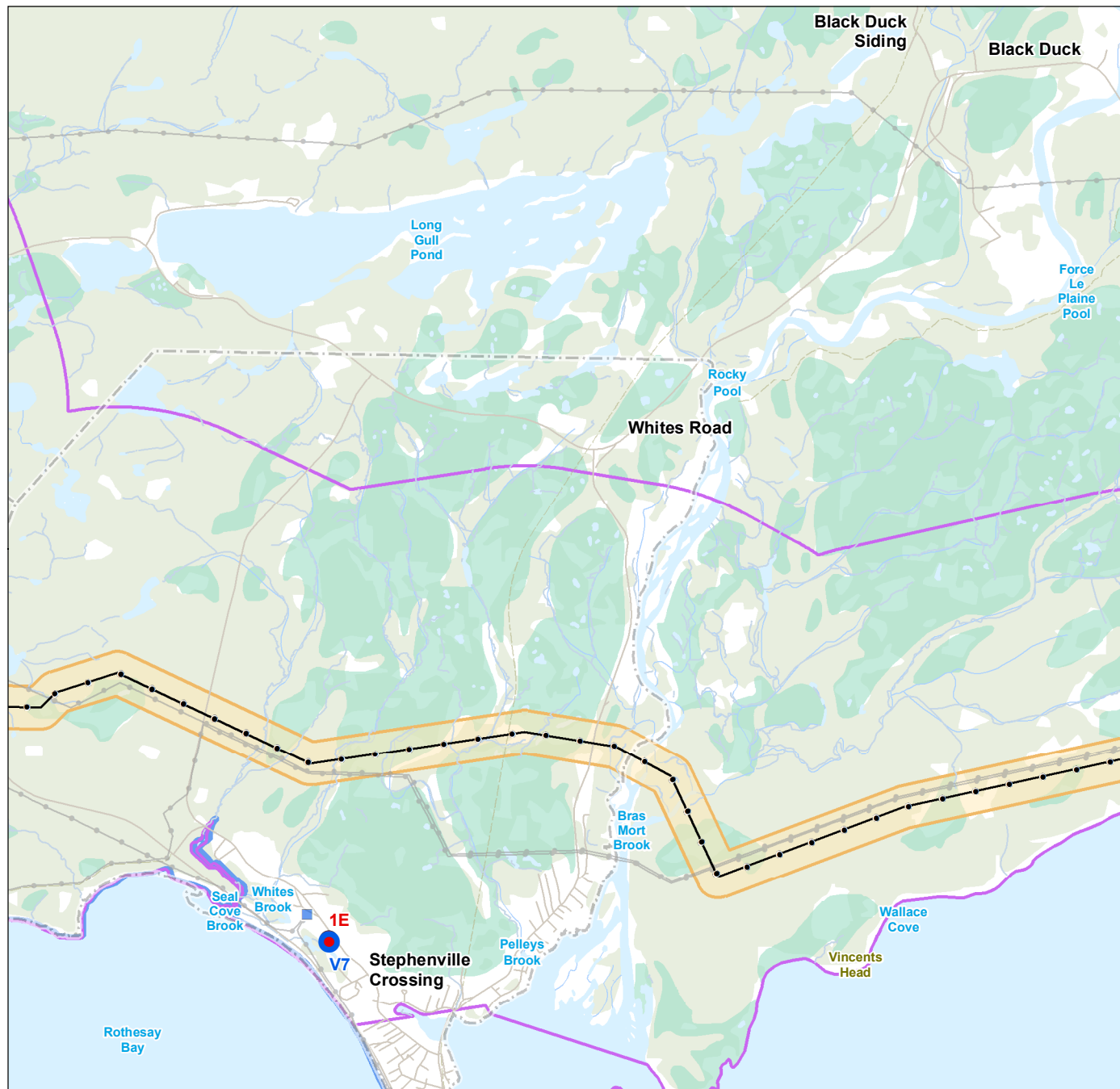
Figure No.
DMPA10-A

**Noise and Vibration Monitoring
Locations**

Page 10 of 13

Disclaimer: This document has been prepared based on information provided by others as cited in the Notes section. Stantec has not verified the accuracy and/or completeness of this information and shall not be responsible for any errors or omissions which may be incorporated herein as a result. Stantec assumes no responsibility for data supplied in electronic format, and the recipient accepts full responsibility for verifying the accuracy and completeness of the data.

V:\1214\active\12141723303_data\gis_cad\gis_data\mapping\mxd\general\IEIS_Amendment\CH09_MPA121418050_09_DMPA10-A_Noise_and_Vibration_Monitoring_Locations_Mapbook.mxd
Revised: 2024-01-23 By: mblackwood



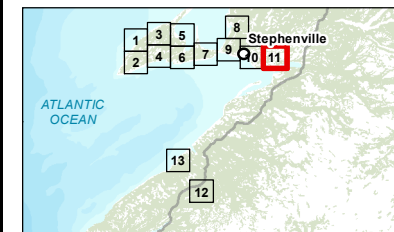
- | | |
|---|---|
| <ul style="list-style-type: none">Vibration Monitoring LocationsNoise Monitoring LocationTransmission Line 230 kVProject AreaLocal Assessment AreaRegional Assessment Area | <ul style="list-style-type: none">SubstationTransmission Line, ExistingMunicipal BoundaryRoadRoadResource Road / TrailWatercourseWaterbodyWetlandForested Area |
|---|---|



0 0.75 1.5 km
(At original document size of 8.5x11)
1:50,000

Notes

1. Coordinate System: NAD 1983 CSRS UTM Zone 21N
2. Data Sources: World Energy GH2, NRCAN CanVec, GovNL, Openstreetmap
3. Background: NRCAN CanVec



Project Location
Stephenville
NL

Prepared by AC on 2024-01-23
QR by AW on 2024-01-22

Client/Project
World Energy GH2
Project Nujio'qonik

121418050_09

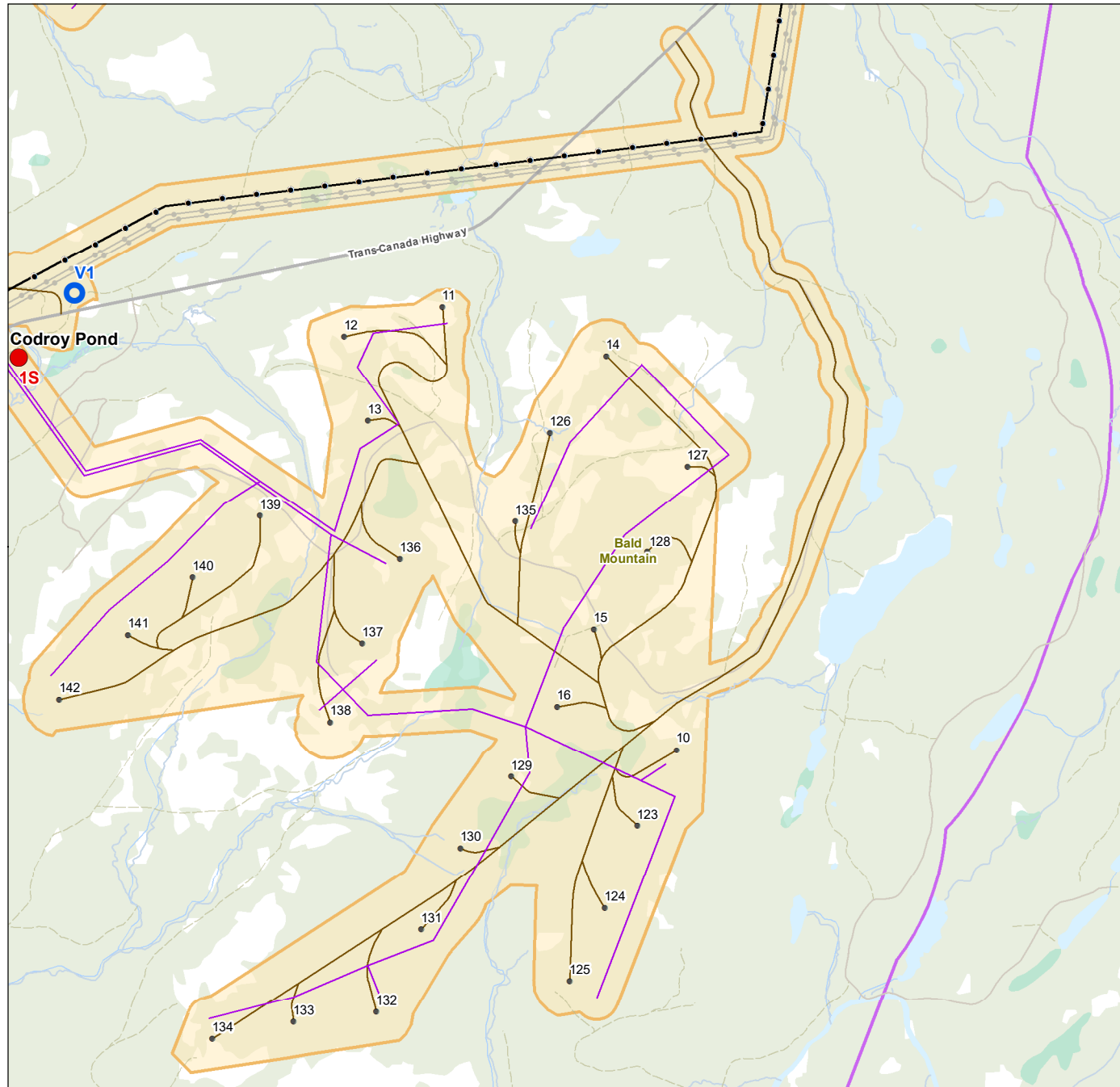
Figure No.
DMPA10-A

Noise and Vibration Monitoring Locations

Page 11 of 13

Disclaimer: This document has been prepared based on information provided by others as cited in the Notes section. Stantec has not verified the accuracy and/or completeness of this information and shall not be responsible for any errors or omissions which may be incorporated herein as a result. Stantec assumes no responsibility for data supplied in electronic format, and the recipient accepts full responsibility for verifying the accuracy and completeness of the data.

V:\1214\active\12141723303_data\gis_data\mapping\mxd\general\IEIS_Amendment\CH09_MPA121418050_09_DMPA10-A_Noise_and_Vibration_Monitoring_Locations_Mapbook.mxd
Revised: 2024-01-23 By: mblackwood



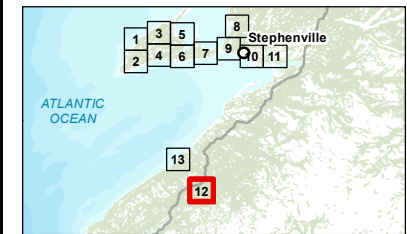
- | | |
|---|---|
| <ul style="list-style-type: none">Vibration Monitoring LocationsNoise Monitoring LocationTurbine LocationTransmission Line 230 kVCollector LineAccess RoadProject AreaLocal Assessment AreaRegional Assessment Area | Other Features <ul style="list-style-type: none">Transmission Line, ExistingTrans Canada HighwayRoadTrans-Canada HighwayRoadResource Road / TrailWatercourseWaterbodyWetlandForested Area |
|---|---|



0 0.75 1.5 km
(At original document size of 8.5x11)
1:50,000

Notes

- Coordinate System: NAD 1983 CSRS UTM Zone 21N
- Data Sources: World Energy GH2, NRCAN CanVec, GovNL, Openstreetmap
- Background: NRCAN CanVec



Project Location
Stephenville
NL

Prepared by AC on 2024-01-23
QR by AW on 2024-01-22

Client/Project
World Energy GH2
Project Nujio'qonik

121418050_09

Figure No.
DMPA10-A

Noise and Vibration Monitoring Locations

Page 12 of 13

Disclaimer: This document has been prepared based on information provided by others as cited in the Notes section. Stantec has not verified the accuracy and/or completeness of this information and shall not be responsible for any errors or omissions which may be incorporated herein as a result. Stantec assumes no responsibility for data supplied in electronic format, and the recipient accepts full responsibility for verifying the accuracy and completeness of the data.

V:\1214\active\12141723303_data\gis_cad\gis_data\mapping\mxd\general\IEIS_Amendment\CH09_MPA121418050_09_DMPA10-A_Noise_and_Vibration_Monitoring_Locations_Mapbook.mxd
Revised: 2024-01-23 By: mblackwood



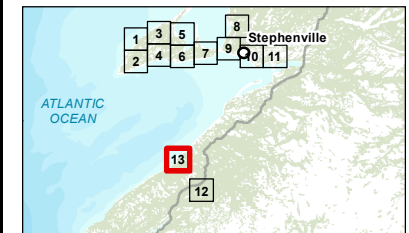
- | | |
|---|--|
| <ul style="list-style-type: none"> Vibration Monitoring Locations Noise Monitoring Location Local Assessment Area Regional Assessment Area | Other Features <ul style="list-style-type: none"> Road Road Resource Road / Trail Watercourse Waterbody Wetland Forested Area |
|---|--|



0 0.75 1.5 km
(At original document size of 8.5x11)
1:50,000

Notes

1. Coordinate System: NAD 1983 CSRS UTM Zone 21N
2. Data Sources: World Energy GH2, NRCAN CanVec, GovNL, Openstreetmap
3. Background: NRCAN CanVec



Project Location
Stephenville
NL

Prepared by AC on 2024-01-23
QR by AW on 2024-01-22

Client/Project
World Energy GH2
Project Nujio'qonik

121418050_09

Figure No.
DMPA10-A

Noise and Vibration Monitoring Locations