



**Advanced Mineral Exploration Activities at the Queensway Gold Project -  
Queensway North, Central Newfoundland**

## **Environmental Registration**

Pursuant to the Newfoundland and Labrador Environmental Protection Act, SNL 2002, cE-14.2,



**New Found Gold Corp.**

**300 Garrett Drive Gander, NL, A1V 0H6**

**April 10th, 2024**

## Executive Summary

New Found Gold Corporation (NFG) is proposing to continue the advanced mineral exploration program on its mineral licences associated with the Queensway Gold Project, particularly at Queensway North located east and north of Appleton, in central Newfoundland (Figures 1 to 4). The 36 mineral licenses associated with this Project include; 006821M, 007984M, 022216M, 022491M, 023720M, 023721M, 023804M, 023860M, 023861M, 023862M, 023863M, 023864M, 023866M, 023874M, 023875M, 023881M, 023916M, 023962M, 023987M, 024026M, 024031M, 024136M, 024138M, 024139M, 024140M, 024141M, 024264M, 024265M, 024266M, 024268M, 024997M, 025008M, 026074M, 030714M, 035198M, and 035681M. Proposed development for this document will be located on mineral licence 07984M.

The Advanced Exploration program will primarily focus on trenching at three locations and will occur over some of the same property as described in Registration 2106, previously released from the Environmental Assessment (EA) review process in October 2020 for diamond drilling, Registration 2214 previously released for a 48 square kilometers (km<sup>2</sup>) seismic survey and Trenching at the Keats Zone and Registration 2273 recently released on January 2024 for continued diamond drilling at Queensway North. **This proposed trenching program will occur over a 3 to 5 year period and see trenching systematically.** This trench has a footprint of approximately 12.90 hectares and has an estimated overburden removal volume of up to 317,860 m<sup>3</sup>. In addition to the Queensway North mineral licenses, NFG also holds mineral licenses associated with two other areas, Queensway South (QWS) and non-contiguous licences north and west of QWN (Figure 3). This document does not describe exploration activities associated with these other areas. Should exploration programs for these areas be proposed in the future, NFG will complete separate permits for them.

NFG will complete all Project work in accordance with regulatory permits, approvals and/or authorizations and with procedures outlined in their exploration Environmental Protection Plan and other associated plans. Most Project activities align with activities described in a previously released Projects (Registrations 2214 and 2273), and NFG will abide by conditions of release associated with those releases and associated permits.

The natural environment of this project area was characterized and assessed using background information, confirmatory fieldwork, aerial imagery, publicly available data and GIS software. The Study Area, as defined on Figure 4, has been subject to significant historical alteration from logging and past mineral exploration activities. The biophysical features that remain undisturbed were identified and assessed to determine potential impacts and associated mitigation measures, if necessary. NFG will notify the EA Division and the Mineral Lands Division of any significant changes to their planned exploration work.

## Table of Contents

Executive Summary	i
1.0 Name of Undertaking	1
2.0 Proponent	1
2.1 Name of Corporate Body	1
2.2 Address	1
2.3 Chief Executive Officer	1
2.4 Principle Contact	1
3.0 The Undertaking	1
3.1 Nature of the Undertaking	1
3.2 Purpose/Rationale/Need for Undertaking	2
4.0 Description of the Undertaking	3
4.1 Geographic Location	3
4.2 Physical Features	3
4.3 Exploration	8
4.4 Operation	13
4.5 Occupations	15
4.6 Project Related Documents	19
4.7 Baseline Studies	19
5.0 Approval of the Undertaking	20
5.1 Mineral Exploration Approvals – Diamond Drilling, Seismic, and Trenching	20
5.2 Section 39 – Development	20
5.3 Environmental Registration Documents	20
5.4 Forestry – Fire Season Operating Permits	20
5.5 Permit for Development – Protected Roads	20
5.6 Temporary Vehicular Access Permit – T’Railway Provincial Park	20
5.7 Town of Appleton Development Permits	20
6.0 Schedule	21
7.0 Funding	21
8.0 Limitations	21

## List of Figures

Figure 1: Queensway Gold Project – Property Location Map	4
Figure 2: Queensway Gold Project – Queensway Licences Map	5
Figure 3: Queensway Gold Project –Queensway North Project Area and License 07984M	6
Figure 4: Queensway North - Planned Trenching at Iceberg, Keats West, and Lotto Zones	8
Figure 5: Keats Trench at Queensway North - shown as built	9
Figure 6: Trench at Queensway North – Demographics	16

## List of Tables

Table 1: Volumes, areas, and depth for proposed trenching at QWN.	7
Table 2: New Found Gold Trenching Project Occupation count as of April 10th, 2024 with NOC.	15

## List of Photographs

Picture 1: Visible Gold in quartz veining - HQ drill core.	2
Picture 2: Completed trench at the Keats Zone – top down view.	10
Picture 3: Completed trench at the Keats Zone – looking Southwest.	10
Picture 4: Gated entrance (left & centre) to the Keats Trench and wildlife fencing (right).	11
Picture 5: View of the overburden stockpile at Keats Zone – looking Northeast.	11
Picture 6: Fenced in, PVC lined settling pools for Keats Trench water management.	12
Picture 7: Excavator operator loading articulated rock truck with trench overburden	16
Picture 8: Labourers installing PVC liner at the Keats Trench settling pond.	17
Picture 9: Heavy Equipment Operator scraping bedrock using excavator-mounted cleaning bucket.	17
Picture 10: Labourers washing down bedrock in preparation for aerial survey and detailed geological mapping.	18
Picture 11: Geologists inspecting mineralized veins at Keats Trench.	18

## Appendices

Appendix 1 List of New Found Gold Mineral Exploration Licenses

Appendix 2 Project Review Maps

Map 1 Iceberg Zone & Keats West – Planned Trench Layout

Map 2 Lotto Zone – Planned Trench Layout

## 1. Name of Undertaking

### **Queensway Gold Project (Queensway North Gold Project) 3-5 Year Trenching Program**

## 2. Proponent

### 2.1. Name of Corporate Body

#### **New Found Gold Corporation**

### 2.2. Address

Field Office Newfoundland and Labrador

**300 Garrett Drive, Gander, NL. A1V 0H6**

Head Office British Columbia

**1600-595 Burrard St., Vancouver, BC, V7X 1L3**

Web Page <https://newfoundgold.ca/>

### 2.3. Chief Operating Officer

**Mr. Greg Matheson, P.Geo. Chief Operating Officer (COO)**

Telephone: 705-570-1233

Email: [gmatheson@newfoundgold.ca](mailto:gmatheson@newfoundgold.ca)

### 2.4. Principle Contacts

**Dr. Jared Saunders, PhD., CRSP, EP, Director of Environmental & Regulatory Affairs**

Telephone: 709-424-9567

Email: [jsaunders@newfoundgold.ca](mailto:jsaunders@newfoundgold.ca)

**Mr. Michael Regular, P.Geo. Lands Management & Permitting**

Telephone: 709-486-7705

Email: [mregular@newfoundgold.ca](mailto:mregular@newfoundgold.ca)

## 3. The Undertaking

### 3.1. Nature of Undertaking

Continue to undertake advanced mineral exploration activities at Queensway North (QWN) including **trenching** with gold zone mapping, geochemical sampling, geological studies and

related exploration activities along the Iceberg, Lotto, and Keats West gold zones at the Queensway Gold North Project, Appleton to Gander Lake area, central Newfoundland.

### 3.2. Purpose/Rationale/Need for Undertaking

**New Found Gold Corp** (NFG) is a publicly traded mineral exploration company (**TSX-V : NFG; NYSE-A : NFGC**) exploring for gold on the island of Newfoundland (Figure 1) at their Queensway Gold Project (Figure 2). As part of its exploration efforts, the company wishes to conduct a three-target trenching program along the Iceberg, Lotto, and Keats West gold zones on mineral licence 07984M at QWN (Figure 3). The company is currently core drilling at the project and will be both mapping and sampling the previously excavated Keats Trench this spring and summer. The ongoing Keats Trench work will advance the geological and lithological understanding, the special orientation, and size of the gold mineralized veining there as well as test the gold content to assess economic viability (Picture 1).



*Picture 1: Visible Gold in quartz veining – HQ drill core.*

## 4. Description of the Undertaking

### 4.1. Geographic Location

From north to south, the QWN project is located between Gander Lake and the Gander River. From east to west, it is located between the communities of Gander (Joe Batts Pond) and Appleton, including a transect by the Trans-Canada Highway (TCH) (Figure 2). The southern portions of the Queensway project lay south of Gander lake extending to the Baie d'Espoir Highway, near Middle Ridge and Third Berry Hill Pond (Figure 2). Non contiguous portions of the project occur north of the QWN towards Little Rocky Brook, Bellman's Pond, Ten Mile Lake and Twin Ponds (Figure 2). ***This Environmental Registration deals solely with proposed trenching and related activities on mineral licence 07984M at QWN (Figure 3).*** A list of the Queensway mineral exploration licences is attached as Appendix 1. with more detailed review maps attached as Appendix 2.

### 4.2. Physical Features

The trenching project requires the removal of organic material, till overburden, and possibly loose mineralized material from above the Iceberg, Lotto and Keats West gold zones. Removal would utilize existing access trails extending from forest access roads, as well as additional access created for proposed stockpile locations. Trenches are temporary in nature and, if need, are first cleared of brush and trees by mulching to provide safe and open areas for the operation of excavation equipment. These trenched sites will be fenced along bermed and sloped margins to deter access by ATV, snowmobiles and wildlife.

No buildings or other permanent infrastructure are planned outside the surface rights at the NFG core yard in the Appleton Industrial Park.

The topography of the general area is dominated by broad, northeast trending ridges with linear, bogs, brooks, and larger ponds in the lower areas. Gander Lake, at 29 m above sea level (ASL) and the Gander River are the major waterbodies nearest to the project area. Maximum elevation is approximately 100 m ASL at Appleton on the TCH with a minimum of 20 m ASL along the Gander River in the northern portions of the project. Previously harvested forest covers much of the project area with some significant recent cutover dating from 1990's to the 2010's. The recently harvested areas of the project have been silviculture treated with a mix of genetically enhanced black and white spruce and are part of the forest land managed by Corner Brook Pulp and Paper. Older harvested regions around the Town of Appleton have regenerated naturally with frequent harvest of suitable firewood by the local town residents. Old access roads run throughout the region along with ATV trails and other accesstrails developed by the exploration companies who have operated in this area since the mid 1980's.



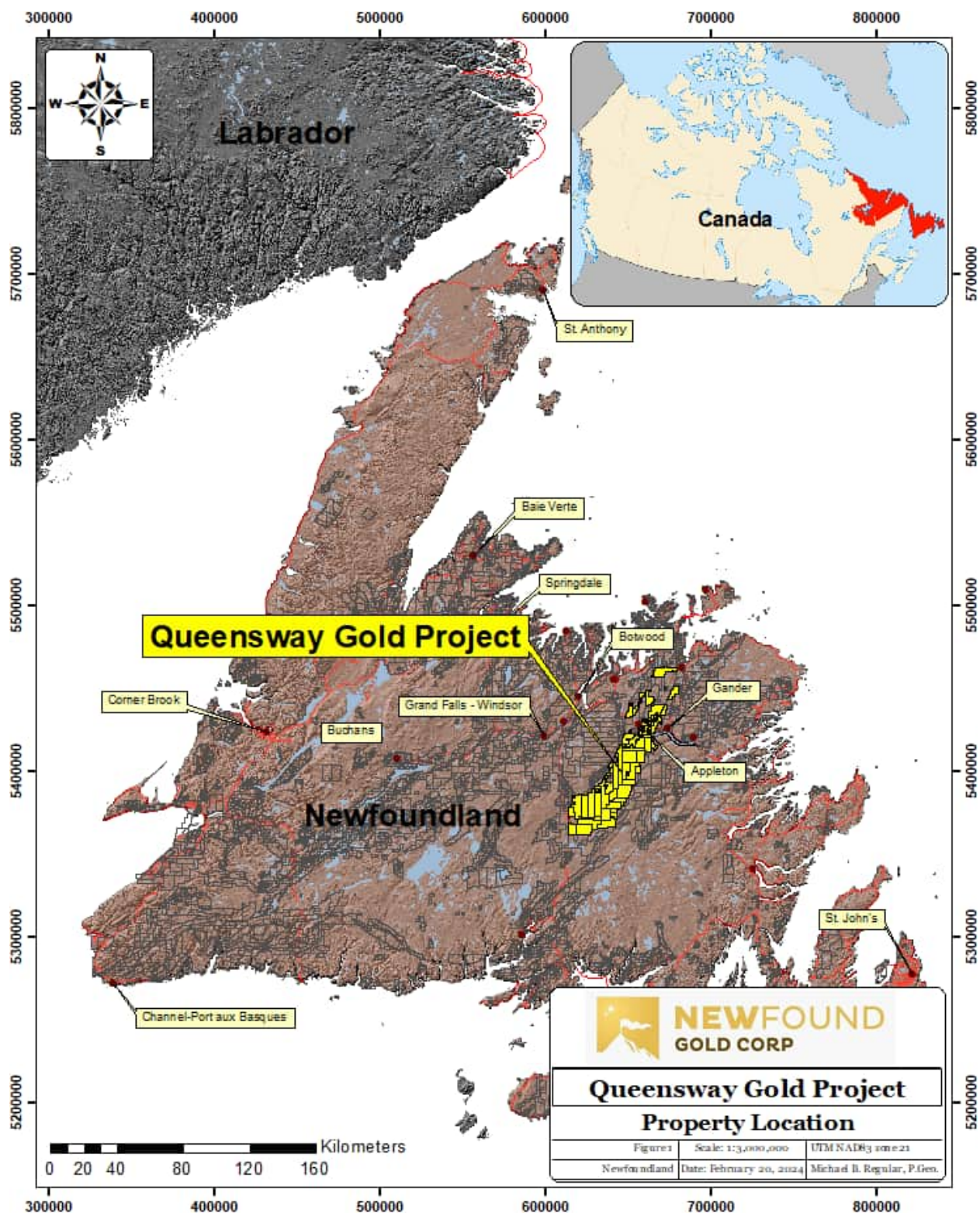


Figure 1: Queensway Gold Project – Property Location Map (1:3,000,000)

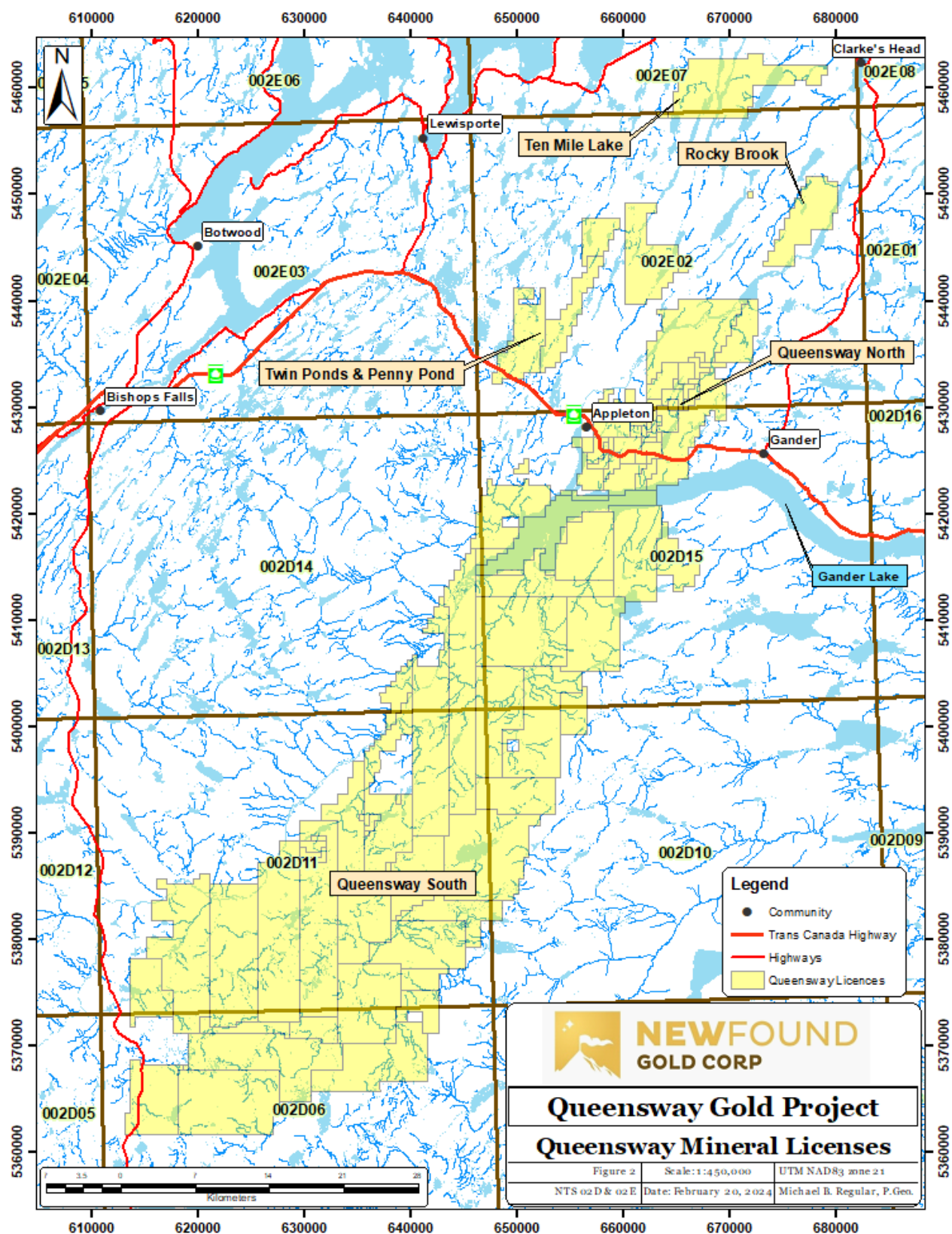


Figure 2: Queensway Gold Project – Queensway Licences Map (1:450,000)



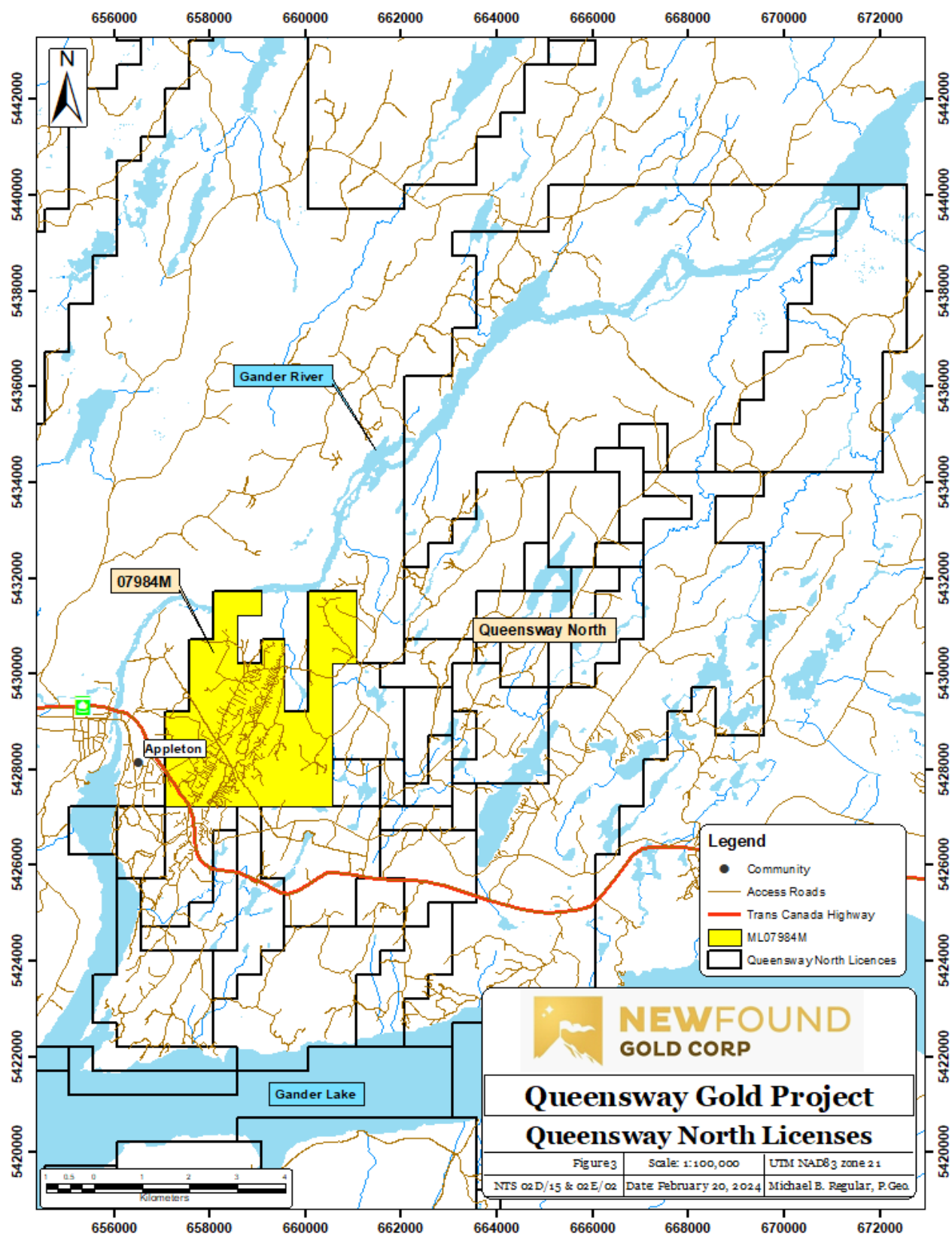


Figure 3: Queensway Gold Project –Queensway North Project Area and License 07984M (1:100,000)

The climate is a blended maritime-humid continental, with pleasant summers, a cool, wet, spring and autumn, and snowy, often windy, winters. Summer temperatures are typically in the low to mid 20's but highs can peak at over 30 degrees C. Winter temperatures range from -15 degrees C or occasionally colder, to +5 degrees C or more during warmer winters however temperatures are variable averaging a high of 16 degrees C and a low of 0 degrees C. Snow usually occurs from December through April but can start earlier and extend later. Rainfall occurs through the spring, summer, and fall mainly as showers to heavy rain, frequently with strong winds. Weather is dominated by ocean currents, prevailing westerlies, and storms from the Maritimes / Canada from the west or south along the US eastern seaboard.

NFG will not conduct any physical work within recognized buffer zones without prior approval. Recognized buffers include 30m buffers on all waterbodies and wetlands, 100m buffers on tributaries of Gander Lake, 300m buffer around Gander Lake, 15m buffer along the T'Railway Provincial Park, the former Glenwood Park, the Town of Appleton, 300m from salmon pools along Gander River as well as other assorted buffers along Gander River, Protected Roads, Raptor nest sites, and others. Local waterbodies to the trenching areas include South Herman's Pond and North Herman's Pond, indicated in Figures 4 and the review maps in Appendix 2.

The proposed trench areas is based on 3D geological mapping from drill core and how these known zones may intersect the bedrock interface at surface. These areas are further defined on the accompanying review maps in Appendix 2.

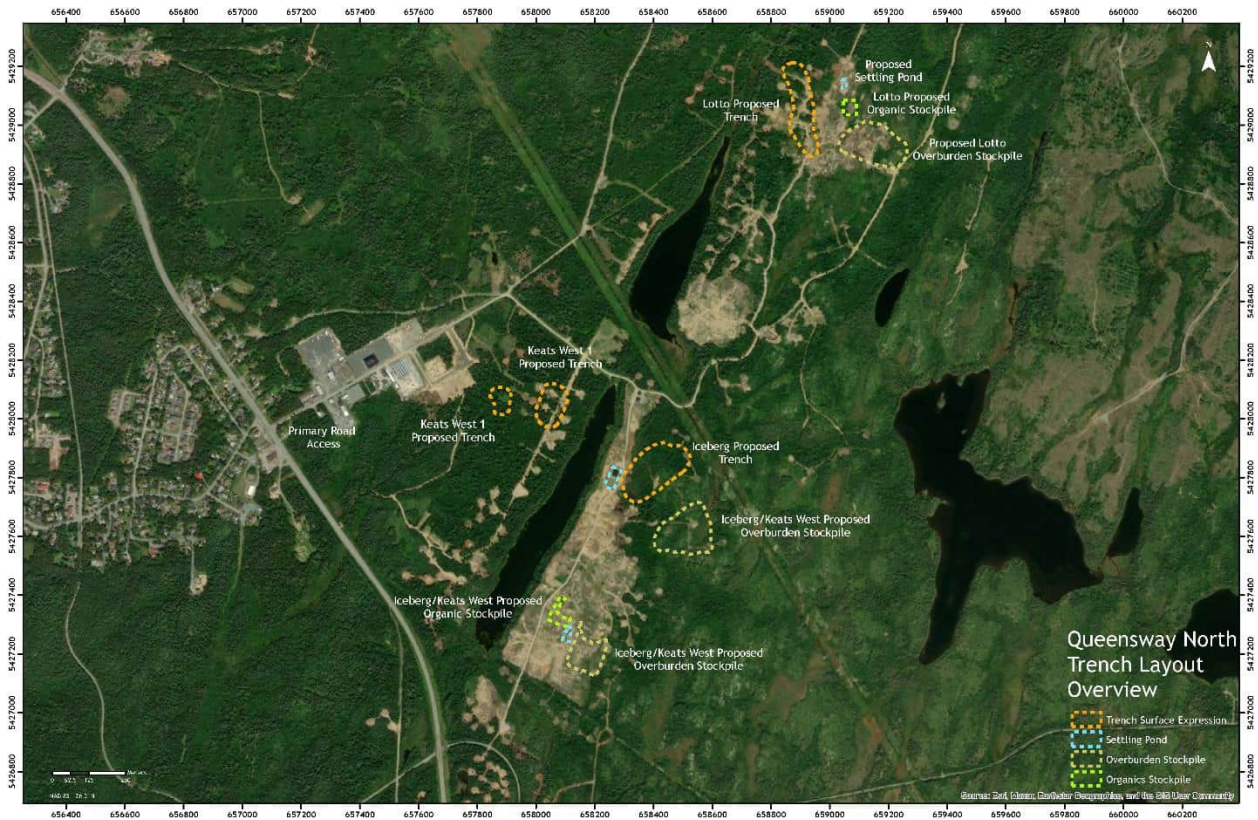
The total trench development (6.72 ha) with adjacent stockpiles (6.18 ha) will cover an area of 12.90 ha, and this disturbance constitutes less than 0.02 % of the total sub basin area.

Trench sites and trails throughout the Herman's Ponds region contain varying degrees of second-generation growth (Figure 4 and review maps in Appendix 2). NFG conducted silviculture in 2023 planting over 123,000 seedlings and has plans for a similar amount in 2024.

<b>Trench</b>	<b>Volume (m3)</b>	<b>Area (Ha)</b>	<b>Average Depth (m)</b>
Iceberg	144027	2.88	7.27
Keats West 1	18342	0.51	3.40
Keats West 2	66521	1.16	7.10
Lotto	88970	2.17	6.04
<b>TOTAL</b>	<b>317860</b>	<b>6.72</b>	

<b>Stockpiles</b>	<b>Volume Proposed(m3)</b>	<b>Area (Ha)</b>
Keats (addition)	27636	n/a
Keats (extension)	62055	1.24
Iceberg Proposed	205190	2.48
Lotto Proposed	123055	2.46
<b>TOTAL</b>	<b>417936</b>	<b>6.18</b>

Table 1: Volumes, areas, and depth for proposed trenching at QWN.



**Figure 4: Queensway North - Planned Trenching at Iceberg, Keats West, and Lotto Zones.**

### 4.3. Exploration

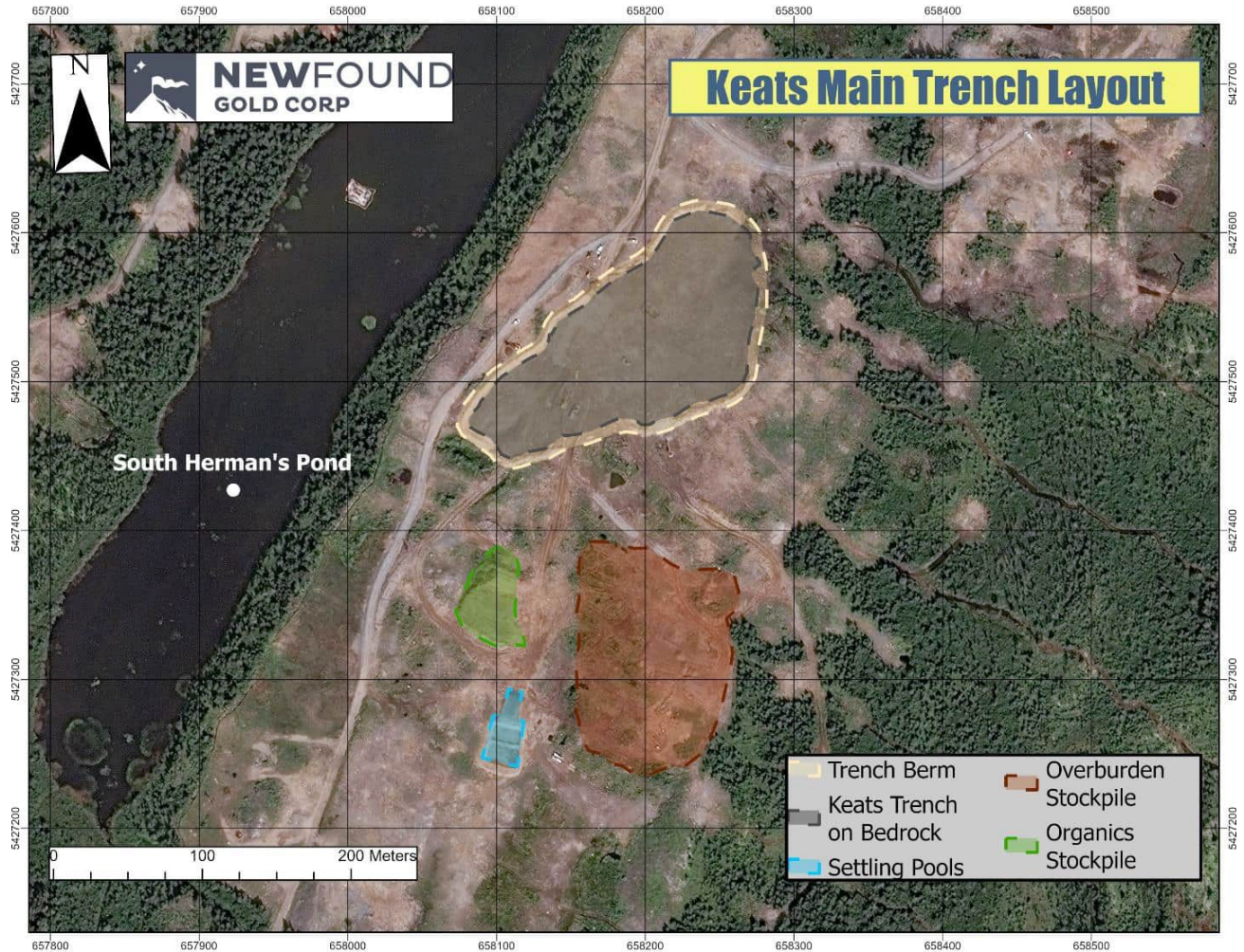
Drilling and trenching by the company has been ongoing at the Queensway Gold Project since August of 2020 under a number of permits covering a varied collection of exploration activities. As of the end of March 2024, there have been 2,169 holes completed and 512,660.78 metres of core extracted at QWN using 4 to 10 drill rigs. There were 10 holes and 1,985 metres drilled in 2019, 66 holes and 13,989 metres drilled in 2020, 393 holes and 123,091 metres drilled in 2021, 615 holes and 177,495 metres drilled in 2022, 933 holes and 180,206 metres drilled in 2023, with 95 holes and 19,950 metres so far in 2024. Clearing of drill site areas and access trails has occurred intermittently at this project site since 1991 with over 200 historical sites existing at the beginning of this program.

Advanced exploration by NFG is expected to continue through the next 3-5 years and possibly beyond, although decisions to continue the operation will be based solely on gold markets, price, and the capacity of the company to raise capital. Progressive rehabilitation of the trench site locations will be completed once mapping and sampling work has finished at those sites.

All activity associated with the proposed trenching program will be isolated to three existing exploration targets, as shown in Figure 4. Exploration will see the opening of only temporary sites and no permanent construction is planned at this time. NFG completed trenching exploration work at the Keats Trench in 2023. The experience and insight from trenching activities will help guide how future trenching work will be conducted. A map illustrating the completed layout of the Keats Trench area is provided for reference (Figure 5), along with several photos showing aerial



views of the completed trench (Pictures 2 and 3), wildlife fencing surrounding the trench and the locked and gated entrance (Picture 4). Also shown are photos of the overburden stockpile (Picture 5) and settling pools (Picture 6) associated with the excavation.



**Figure 5: Keats Trench at Queensway North - shown as built.**





**Picture 2: Completed trench at the Keats Zone – top down view, 10/24/2023.**



**Picture 3: Completed trench at the Keats Zone – looking Southwest, 10/28/2023.**





**Picture 4: Gated entrance (left & centre) to the Keats Trench and wildlife fencing (right) – 03/26/2024**



**Picture 5: View of the overburden stockpile at Keats Zone – looking Northeast, 03/26/2024**





**Picture 6: Fenced in, PVC lined settling pools for Keats Trench water management – 03/26/2024**

Haul ramps may require the use of blast rock and 4 inch minus to stabilize the pathway for heavy, articulated rock trucks (“wobble wagons”) in order to efficiently haul excavated material to stockpile areas. These ramps are removed after excavation is complete. Rock will be sourced from local commercial operations or from a quarry located at the project site under permit 148383.

No stream crossings are anticipated. However, a groundwater management plan is in place should water enter the excavation zone.

Potential sources of pollutants during the exploration process could include air emissions from mobile heavy equipment (excavator) and potential for petroleum spills (excavator-diesel fuel/hydraulic oil, gasoline). Solid waste materials will include any merchantable timber encountered in the clearing process. Site clearing is conducted with an excavator mounted “mulcher” which grinds the vegetation and small trees into wood chips.

Air pollution will be controlled by having all equipment on site fitted with the appropriate emission-control equipment. Noise levels associated with the work are not expected to reach harmful levels as they will be in areas removed from local infrastructure. The nearest residential areas are over 1 km from the project site.

Site clearing and trench excavation will occur in phases, as planned overburden layers are encountered, and noise levels are not anticipated to exceed maximum allowable levels at the

Town of Appleton. The use of modern low noise excavators and daytime use of heavy machinery (haul trucks) should generate no noise exceeding that already witnessed from the Trans-Canada Highway. There have been no documented complaints of noise being an issue in or around the proposed drilling areas which has received significant previous exploration since the late 1990's. Workers will have the proper hearing protection at the work sites which are controlled work environments. Domestic waste will be collected and disposed of in accordance with the Waste Material Disposal Act with onsite waste in Porta-Potties handled and maintained by an approved service provider.

Bulk fuel for exploration equipment will not be stored on site but will be brought in as required by a petroleum product service company. No fuel will be stored, and no fuelling will take place within the PPWSA. The handling of petroleum products on site will comply with the Storage and Handling of Gasoline and Associated Products Regulations (2003). Complete and regularly checked emergency spill kits will be available on site for containment and cleanup of any hydrocarbon leaks or spills.

The erosion and transport of fine-grained particles in water during exploration will be controlled by using appropriate mitigating measures such as erosion control ditches, sumps, small settling ponds, hay bales, silt fencing, and berms.

An emergency spill response plan is in place and NFG Emergency/Environmental response teams are on site with PES (Petroleum and Environmental Services inc.) located within the project area.

Reclamation of trench sites and access points will occur with the conclusion of mapping, sampling and related exploration and includes filling of the trench in reverse order, leveling of the site, redistribution of vegetation or other organic materials around the site, regrading of any ruts left from vehicles, seeding of areas that cleared of vegetation and use of hay to stop any erosion of soil, ultimately the sites are treated with silviculture where applicable.

#### **4.4. Operation**

The Company plans to operate modern excavators and articulated dump trucks ("wobble wagons") at each of the proposed trench sites. Trenching involves the operation of excavators or intermittently bulldozers for removal of overburden. Water is used in the trenching process to remove debris above exposed bedrock and water pumps are used to pump water to the sumps and holding areas. Water is allowed to settle and released to the environment after it acceptable for release.

The previous Keats Main Trench excavation began on August 16<sup>th</sup>, 2023, and was completed in just over nine weeks on October 20<sup>th</sup>, 2023. Planned trenching at the Iceberg prospect will cover an area similar to the Keats Main trench; however, it will require removal of a larger overburden volume. With this in mind, the excavation at Iceberg is expected to continue past the ten-week mark. Planned trenches at the Lotto and Keats West prospects have significantly smaller relative footprints compared to the Keats Main Trench (Appendix 2) and therefore are expected to take a shorter timeframe. New Found Gold will take a phased approach at each location, contingent on internal project approval and receipt of all necessary operational permits.

Excavation would begin at the largest proposed trench, at Iceberg, having an anticipated start date during June of 2024. Excavation at Lotto or Keats West is currently not scheduled to begin until the Spring or Summer of 2025.

Land reclamation associated with trench construction, such as seeding and spreading of hay to prevent increased soil erosion, would occur as required once all studies have been completed.

Potential sources of pollutants from the trenching project include runoff from the excavation that may contain suspended solids (fine sediment), which could be harmful to aquatic life if introduced into a watercourse; petroleum products used by heavy equipment (excavators, rock/dump trucks, dozer, bull dozer) including diesel fuel and hydraulic fluid; gasoline used in pickup trucks, off road vehicles and pump systems; and air emissions from heavy equipment. All equipment is monitored regularly to ensure it is operating efficiently and an environmental team is in place to conduct daily reviews of all operations.

Potential resource conflicts could include recreational uses such as berry picking, firewood cutting, hunting, fishing, wildlife issues, and forestry.

Fuel for exploration equipment will not be stored on site but will be brought in as required by a petroleum product service company and stored in double walled tanks at the Appleton Industrial Park. The handling of petroleum products on site will comply with the Storage and Handling of Gasoline and Associated Products Regulations (2003). Complete and regularly checked emergency spill kits will be available on site for containment and cleanup of any hydrocarbon leaks or spills.

The erosion and transport of fine-grained particles in water during exploration will be controlled by using appropriate mitigating measures such as erosion control ditches, hay bales, silt fencing and berms.

NFG maintains a dedicated environmental team tasked with the oversight of all on-site activities to ensure strict adherence to applicable environmental standards. We have formulated a comprehensive spill response plan and conduct daily monitoring to promptly detect any potential spills, leaks or releases of regulated substances. In preparation for any potential spill scenario, NFG has established and trained a specialized spill response team. In the rare event of such incidents, our team diligently follows established protocols, including the requisite reporting to regulatory agencies.

All project-related activities strictly adhere to the Occupational Health and Safety Act and its associated regulations. NFG maintains a vigilant health and safety team that routinely visits the site to monitor project operations and provide training to ensure that all contracted personnel also align with the OHS legislation. In 2023, the company received a COR® Certification from the Newfoundland and Labrador Construction Association and has now implemented a COR® Standard, required for NFG and contractors working on the site.

#### 4.5. Occupations

The company is an equal opportunity employer and seeks to maintain a diversity in its workforce including the hiring of women, men, transgender, minorities and first nations.

The current work force that will be involved in trench construction (Table 2) is 12.8% female. However, this number may vary with seasonal student employment and number of drill rigs or other contracted programs running. Some of the highest paying positions as Geologists and Management are women.

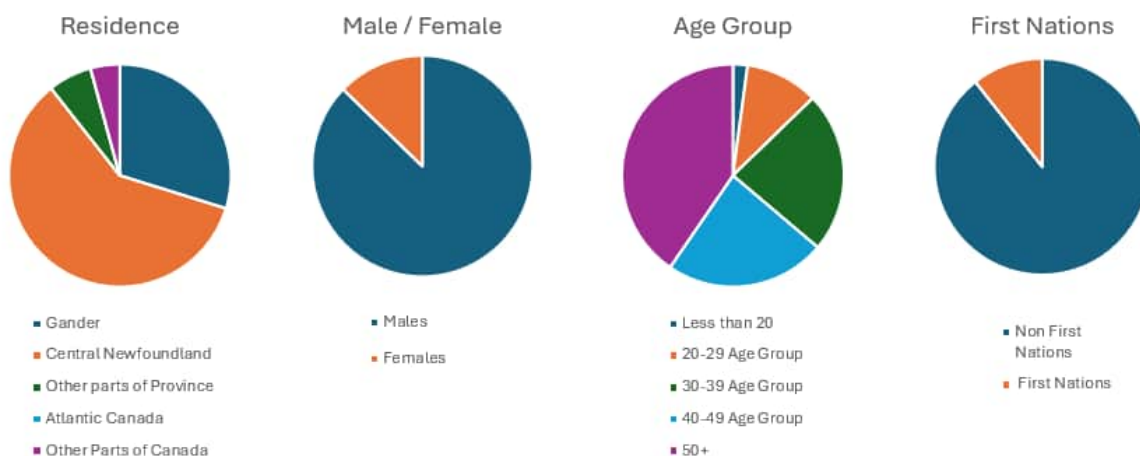
A matter of significance pertains to the residency status of the trench workers, where a remarkable 95.7% hails from Newfoundland and Labrador. As of April 3<sup>rd</sup>, 2023, the distribution is as follows: 14 employees have established their residence in Gander, while an additional 28 are living in central Newfoundland. Three employees come from various other regions within the province, and 2 are from more distant parts of Canada.

It is noteworthy that 10.6% of those slated to take part in the trenching at Queensway North are recognized as First Nation, as is Guntew Resources our primary Field Operations company. These statistics are summarized here in Table 1, with some occupational photos provided below.

Job Title	Employee Count	NOC
Geologists	3	22101
Technicians	5	22101
Environmental Health and Safety	2	21120
Management	4	70012
Senior Management	6	00015
General Labourers	10	85110
Heavy Equipment Operators	15	73400
Administration	2	14200
<b>Total:</b>	<b>47</b>	

**Table 2: New Found Gold Trenching Project Occupation count as of April 3rd, 2023 with NOC.**





**Figure 6: Trench at Queensway North - Demographics**



**Picture 7: Excavator operator loading articulated rock truck with trench overburden**



**Picture 8: Labourers installing PVC liner at the Keats Trench settling pond**



**Picture 9: Heavy Equipment Operator scraping bedrock using excavator-mounted cleaning bucket**





**Picture 10: Labourers washing down bedrock in preparation for aerial survey and detailed geological mapping**



**Picture 11: Geologists inspecting mineralized veins at Keats Trench**

#### 4.6. Project Related Documents

- Inspection Report for E210649-1 completed on November 29, 2023 and reported December 29, 2023 for the Keats Trench Project.
- Environmental Registration 2273: Advanced Exploration Activities at the Queensway Gold Project – Queensway North, Central Newfoundland (Seismic is completed with Keats Trench still active).
- Environmental Registration 2214: Exploration Activities, Queensway Gold Project – Queensway North (QWN Drilling Program)
- National Instrument 43-101: Technical Report on the Queensway Gold Project, Newfoundland, Canada can be found at the company's website, <https://newfoundgold.ca/>

#### 4.7. Environment and Safety

NFG has been actively engaged in conducting baseline studies in the designated area since 2020, with plans for ongoing baseline work extending through 2024 and on. These proposed baseline investigations are of utmost importance in the endeavor to comprehensively document the existing conditions at the Queensway location. These studies serve as the foundation for future baseline study planning and play a pivotal role in informing the environmental assessment processes associated with this project.

The work conducted thus far encompass a diverse range of studies including work related to freshwater fish and fish habitat, hydrology and water/sediment characteristics, vegetation and wetland ecosystems, air quality, noise pollution, and light levels. Additionally, the studies have addressed ecological land classification (ELC) and investigations into archaeology and historic resources, among others.

NFG has recently been awarded the Certificate of Recognition (COR) certification, a highly regarded occupational health and safety certification program. COR is nationally registered, trademark and endorsed by the Canadian Federation of Construction Safety Associations (CFCSA). This certification is presented to companies in the industry that have successfully demonstrated compliance with national standards for occupational health and safety management systems. The COR program is specifically tailored to aid organizations in enhancing their health and safety management systems, fostering a comprehensive understanding of both employer and worker rights and responsibilities, ultimately leading to a reduction in workplace incidents, injuries, and fatalities. This knowledge not only helps in averting liabilities but also ensures due diligence. By actively engaging in the COR program, both employers and employees gain a heightened awareness of the imperative role that injury prevention plays in their daily business operations and work routines.



## **5. Approval of the Undertaking:**

Approvals currently in place:

- The project currently has all the necessary approvals in place to conduct drilling and trenching along the Keats Zone at QWN.

### **5.1. Mineral Exploration Approvals – Diamond Drilling, Seismic, and Trenching**

- Government of Newfoundland and Labrador. Department of Industry, Energy, and Technology, Mineral Lands Division. Permits: E210649 (Seismic & Keats Trench), E230240 (2D Seismic Line), and E230350 (Diamond Drilling).

### **5.2. Section 39 – Development**

- Government of Newfoundland and Labrador. Department of Environment and Climate Change, Water Resources Management Division. Permits: PR012988-2023 (Seismic & Keats Trench), PR011547-2020 (QWN Mineral Exploration), PR013479-2024 (Diamond Drilling).

### **5.3. Environmental Registration Documents**

- Government of Newfoundland and Labrador. Department of Environment and Climate Change, Documents: ER2214 (QWN Seismic Cut Lines and Keats Trench) and ER2273 (QWN Diamond Drilling)

### **5.4. Forestry - Fire Season Operating Permit**

- Forest Service of Newfoundland and Labrador

### **5.5. Permit for Development – Protected Roads**

- Government of Newfoundland and Labrador. Digital Government and Service NL Permit # 248883 (Near TCH) and #287006 (Gander River Management)

### **5.6. Temporary Vehicular Access Permit – T’Railway Provincial Park**

- Government of Newfoundland and Labrador. Department of Tourism, Culture, Arts and Recreation, Parks NL.

### **5.7. Town of Appleton Development Permits**

- The Company monthly receives development permits from the Town of Appleton when working within their municipal planning zone.

## **6. Schedule**

The proposed trenching would start with the Iceberg trench during June of 2024 followed by the Lotto Trench in 2025. The Keats West trench would occur after that and may be as late as 2026/27. A decision to continue beyond 2024 cannot be made except as a projection since such a decision is affected by many factors including exploration success, stock markets, and the price of the underlying commodity (gold). At present there is no plan to stop drilling and this part of the exploration program continues albeit at a reduced volume currently. Instead, drilling has defined numerous new target areas that require more drilling to better define and bring the project towards a maiden mineral resource estimate and best evaluate the economics of future mineral development potential. Results from the 2023 seismic program should assist NFG in better defining the best gold targets and assist with reducing unnecessary holes.

## **7. Funding**

Funding for the trenching exploration activities and associated permitting requirements will be provided directly from the NFG exploration budget.

Definition of gold resources will involve mineral exploration activities such as prospecting, geological mapping, geophysical surveys, both ground and airborne, and geochemical surveys followed by trenching and core drilling to test targets generated by the exploration. NFG wishes to establish the best policies for the environment, the local population, and finally its shareholders.

## **8. Limitations**

This Environmental Registration document has been prepared by New Found Gold Corp. personnel who have extensive knowledge of mineral exploration, project development and the environmental concerns related to mineral exploration. Many of the personnel have been involved with similar exploration programs in this province and other areas of Canada and have been involved with the permitting and ongoing environmental concerns with these programs from day one.

Respectfully Submitted by,



Greg Matheson, P.Geo.  
COO, New Found Gold Corporation

April 10, 2024



Jared Saunder, PhD, CRSP, EP  
Director of Environment & Regulatory Affairs

April 10, 2024



Michael Regular, P.Geo.  
Lands Administration, Assessments, & Permitting

April 10, 2024

# Appendix 1

## List of New Found Gold Mineral Licences

Licence	Holder	Location	NTS Map Sheets	# Claims	Area (km <sup>2</sup> )	Licence Area	Issued Date
006821M	New Found Gold Corp	Gander River, Central NL	02E02	2	0.50	Queensway North	1999-05-17
007984M	New Found Gold Corp	Glenwood, Central NL	02D15,02E02	50	12.50	Queensway North	1998-11-13
022216M	New Found Gold Corp	Glenwood, Central NL	02D15	6	1.50	Queensway North	2014-06-12
022491M	New Found Gold Corp	Gander Lake Area, Central NL	02D15	12	3.00	Queensway North	2014-11-06
023720M	New Found Gold Corp	Glenwood, Central NL	02D15,02E02	4	1.00	Queensway North	2001-12-31
023721M	New Found Gold Corp	Glenwood, Central NL	02D15	2	0.50	Queensway North	2001-12-31
023804M	New Found Gold Corp	Glenwood, Central NL	02D15	12	3.00	Queensway North	2001-02-19
023860M	New Found Gold Corp	Joe Batts Brook, Central NL	02E02	11	2.75	Queensway North	2016-04-07
023861M	New Found Gold Corp	Joe Batts Pond, Central NL	02D15,02E02	16	4.00	Queensway North	2016-04-07
023862M	New Found Gold Corp	Joe Batts Brook, Central NL	02E02	4	1.00	Queensway North	2016-04-07
023863M	New Found Gold Corp	Joe Batts Brook, Central NL	02D15,02E02	11	2.75	Queensway North	2016-04-07
023864M	New Found Gold Corp	Joe Batts Brook, Central NL	02E02	3	0.75	Queensway North	2016-04-07
023866M	New Found Gold Corp	Joe Batts Brook, Central NL	02D15	4	1.00	Queensway North	2016-04-07
023874M	New Found Gold Corp	Joe Batts Brook, Central NL	02D15,02E02	8	2.00	Queensway North	2016-04-11
023875M	New Found Gold Corp	Joe Batts Pond, Central NL	02D15	3	0.75	Queensway North	2016-04-12
023881M	New Found Gold Corp	Joe Batts Brook, Central NL	02E02	7	1.75	Queensway North	2016-04-21
023916M	New Found Gold Corp	Gander Lake Area, Central NL	02D15	4	1.00	Queensway North	2016-05-05
023962M	New Found Gold Corp	The Outflow, Central NL	02D15	9	2.25	Queensway North	2016-05-19
023987M	New Found Gold Corp	Joe Batts Pond Area, Central NL	02D15,02E02	11	2.75	Queensway North	2016-06-07
024026M	New Found Gold Corp	Joe Batts Pond Area, Central NL	02D15	6	1.50	Queensway North	2016-06-30
024031M	New Found Gold Corp	Joe Batts Pond Area, Central NL	02D15,02E02	6	1.50	Queensway North	2016-06-30
024136M	New Found Gold Corp	Gander River Area, Central NL	02E02	25	6.25	Queensway North	2016-09-13
024138M	New Found Gold Corp	Gander Lake, Central NL	02D15	21	5.25	Queensway North	2016-09-15
024139M	New Found Gold Corp	Gander Lake, Central NL	02D15	30	7.50	Queensway North	2016-09-15
024140M	New Found Gold Corp	Joe Batts Pond, Central NL	02D15	2	0.50	Queensway North	2016-09-15
024141M	New Found Gold Corp	Joe Batts Pond Area, Central NL	02D15	2	0.50	Queensway North	2016-09-15
024264M	New Found Gold Corp	Joe Batts Pond Area, Central NL	02D15	4	1.00	Queensway North	2016-10-24
024265M	New Found Gold Corp	Appleton, Central NL	02D15	12	3.00	Queensway North	2016-10-24
024266M	New Found Gold Corp	Joe Batts Pond, Central NL	02D15,02E02	128	32.00	Queensway North	2016-10-24
024268M	New Found Gold Corp	Millers Brook, Central NL	02E02	56	14.00	Queensway North	2016-10-24
024270M	New Found Gold Corp	Island Pond, Central NL	02E02	107	26.75	Queensway North-TP	2016-10-24
024274M	New Found Gold Corp	Twin Ponds, Central NL	02E02	77	19.25	Queensway North-TP	2016-10-24
024997M	New Found Gold Corp	Glenwood Area, Central NL	02D15	21	5.25	Queensway North	2017-04-27
025008M	New Found Gold Corp	Gander Lake, Central NL	02D15	13	3.25	Queensway North	2017-05-04
026074M	New Found Gold Corp	Joe Batts Brook, Central NL	02E02	3	0.75	Queensway North	2018-05-31
030714M	New Found Gold Corp	King's Point, Gander Lake	02D15	8	2.00	Queensway North	2020-05-02
035048M	Suraj Amarnani	Twin Ponds	02E02	42	10.5	Queensway North-TP	2022-09-29
035198M	Suraj Amarnani	Fourth Pond	02E02	168	42	Queensway North	2022-11-10
035209M	New Found Gold Corp	Penny's Pond	02E02	2	0.50	Queensway North	2022-11-10
035681M	New Found Gold Corp	The Outflow, Central NL	02D15	4	1.00	Queensway North	2023-03-16
030775M	New Found Gold Corp	Bellman's Pond	02E02	1	0.25	Queensway North-N	2020-05-02
030777M	New Found Gold Corp	Little Rocky Pond, Gander River	02E02	114	28.50	Queensway North-N	2020-05-02
035047M	Aidan O'Neil	Ten Mile-Duder Lake	02E02, 02E07	209	52.25	Queensway North-N	2022-09-29
035050M	Josh Vann	Ten Mile Lake	02E02, 02E07	2	0.5	Queensway North-N	2022-09-29
035197M	Aidan O'Neil	Penny's Pond	02E02	130	32.5	Queensway North-N	2022-11-10

Licence	Holder	Location	NTS Map Sheets	# Claims	Area (km <sup>2</sup> )	Licence Area	Issued Date
022236M	New Found Gold Corp	Southwest Gander River, Central NL	02D11	5	1.25	Queensway South	2014-06-12
022260M	New Found Gold Corp	Southwest Gander River, Central NL	02D11	1	0.25	Queensway South	2014-06-13
022342M	New Found Gold Corp	Southwest Gander River, Central NL	02D11	1	0.25	Queensway South	2014-08-25
023239M	New Found Gold Corp	Pauls Pond, Central NL	02D11	2	0.50	Queensway South	2015-08-12
023495M	New Found Gold Corp	Northwest Gander River, Central NL	02D11	5	1.25	Queensway South	2015-11-19
023498M	New Found Gold Corp	Northwest Gander River, Central NL	02D11	8	2.00	Queensway South	2015-11-19
024435M	New Found Gold Corp	Greenwood Pond, Central NL	02D11	7	1.75	Queensway South	2016-11-21
024436M	New Found Gold Corp	Greenwood Pond, Central NL	02D11	3	0.75	Queensway South	2016-11-21
024557M	New Found Gold Corp	Bear Pond, Central NL	02D06,02D11	250	62.50	Queensway South	2016-12-12
024558M	New Found Gold Corp	Great Gull River, Central NL	02D06,02D11	239	59.75	Queensway South	2016-12-12
024559M	New Found Gold Corp	Northwest Gander River, Central NL	02D11,02D14	256	64.00	Queensway South	2016-12-12
024560M	New Found Gold Corp	Careless Brook, Central NL	02D14,02D15	121	30.25	Queensway South	2016-12-12
024561M	New Found Gold Corp	Eastern Pond, Central NL	02D06,02D11	256	64.00	Queensway South	2016-12-12
024562M	New Found Gold Corp	Hussey Pond, Central NL	02D11,02D14	241	60.25	Queensway South	2016-12-12
024563M	New Found Gold Corp	Eastern Pond, Central NL	02D06,02D11	236	59.00	Queensway South	2016-12-12
024565M	New Found Gold Corp	Gander Lake, Central NL	02D14,02D15	12	3.00	Queensway South	2016-12-12
024566M	New Found Gold Corp	Gander Lake, Central NL	02D15	125	31.25	Queensway South	2016-12-12
024567M	New Found Gold Corp	Gander Lake, Central NL	02D14,02D15	106	26.50	Queensway South	2016-12-12
024568M	New Found Gold Corp	Birch Pond, Central NL	02D11	254	63.50	Queensway South	2016-12-12
024569M	New Found Gold Corp	Southwest Gander River, Central NL	02D14,02D15	221	55.25	Queensway South	2016-12-12
024570M	New Found Gold Corp	Dennis Brook, Central NL	02D11	117	29.25	Queensway South	2016-12-12
024571M	New Found Gold Corp	Winter Brook, Central NL	02D10,02D11,02D14,02D15	153	38.25	Queensway South	2016-12-12
025766M	New Found Gold Corp	Pauls Pond, Central NL	02D11,02D14	163	40.75	Queensway South	2016-12-12
030710M	New Found Gold Corp	Little Dead Wolf Pond	02D15	144	36.00	Queensway South	2020-05-02
030716M	New Found Gold Corp	Third Berry Hill Pond	02D06	224	56.00	Queensway South	2020-05-02
030722M	New Found Gold Corp	Hunt's Pond	02D15	149	37.25	Queensway South	2020-05-02
030726M	New Found Gold Corp	Joe's Feeder Cove	02D15	5	1.25	Queensway South	2020-05-02
030727M	New Found Gold Corp	Dead Wolf Brook	02D10,02D15	195	48.75	Queensway South	2020-05-02
030733M	New Found Gold Corp	Rocky Brook	02D06,02D11	173	43.25	Queensway South	2020-05-02
030737M	New Found Gold Corp	Caribou Lake	02D10,02D11	247	61.75	Queensway South	2020-05-02
030739M	New Found Gold Corp	Great Gull River	02D06	224	56.00	Queensway South	2020-05-02
030740M	New Found Gold Corp	Ribbon Ponds	02D06	1	0.25	Queensway South	2020-05-02
030741M	New Found Gold Corp	Southwest Gander River Cove	02D15	2	0.50	Queensway South	2020-05-02
030742M	New Found Gold Corp	Steeles Brook	02D06	32	8.00	Queensway South	2020-05-02
030745M	New Found Gold Corp	Dead Wolf Brook	02D10,02D11	101	25.25	Queensway South	2020-05-02
030746M	New Found Gold Corp	Southwest Islands View	02D15	3	0.75	Queensway South	2020-05-02
030747M	New Found Gold Corp	Owl Pond	02D06	37	9.25	Queensway South	2020-05-02
030748M	New Found Gold Corp	Southwest Pond	02D11	140	35.00	Queensway South	2020-05-02
030752M	New Found Gold Corp	Miguel's Lake	02D06,02D11	78	19.50	Queensway South	2020-05-02
030753M	New Found Gold Corp	Gander Lake	02D15	3	0.75	Queensway South	2020-05-02
030754M	New Found Gold Corp	Little Gander Lake	02D06	172	43.00	Queensway South	2020-05-02
030755M	New Found Gold Corp	Rocky Brook	02D11	30	7.50	Queensway South	2020-05-02
030756M	New Found Gold Corp	Southwest Pond	02D10,02D11	88	22.00	Queensway South	2020-05-02
030763M	New Found Gold Corp	Rocky Brook	02D06,02D11	45	11.25	Queensway South	2020-05-02
030765M	New Found Gold Corp	Berry Hill Brook	02D06	124	31.00	Queensway South	2020-05-02
030768M	New Found Gold Corp	Gander Lake Prime	02D15	149	37.25	Queensway South	2020-05-02
030771M	New Found Gold Corp	Northwest Gander River	02D11,02D14	37	9.25	Queensway South	2020-05-02
030783M	New Found Gold Corp	Little Dead Wolf Brook	02D10,02D15	41	10.25	Queensway South	2020-05-02
035087M	New Found Gold Corp	Gander Lake Prime	02D15	2	0.50	Queensway South	2022-10-13
035338M	New Found Gold Corp	Gillingham's Pond	02D15	53	13.25	Queensway South	2023-01-05
036670M	New Found Gold Corp	Careless Brook, Central NL	02D15	6	1.50	Queensway South	2023-10-26
96			Claims	6659	1664.75		

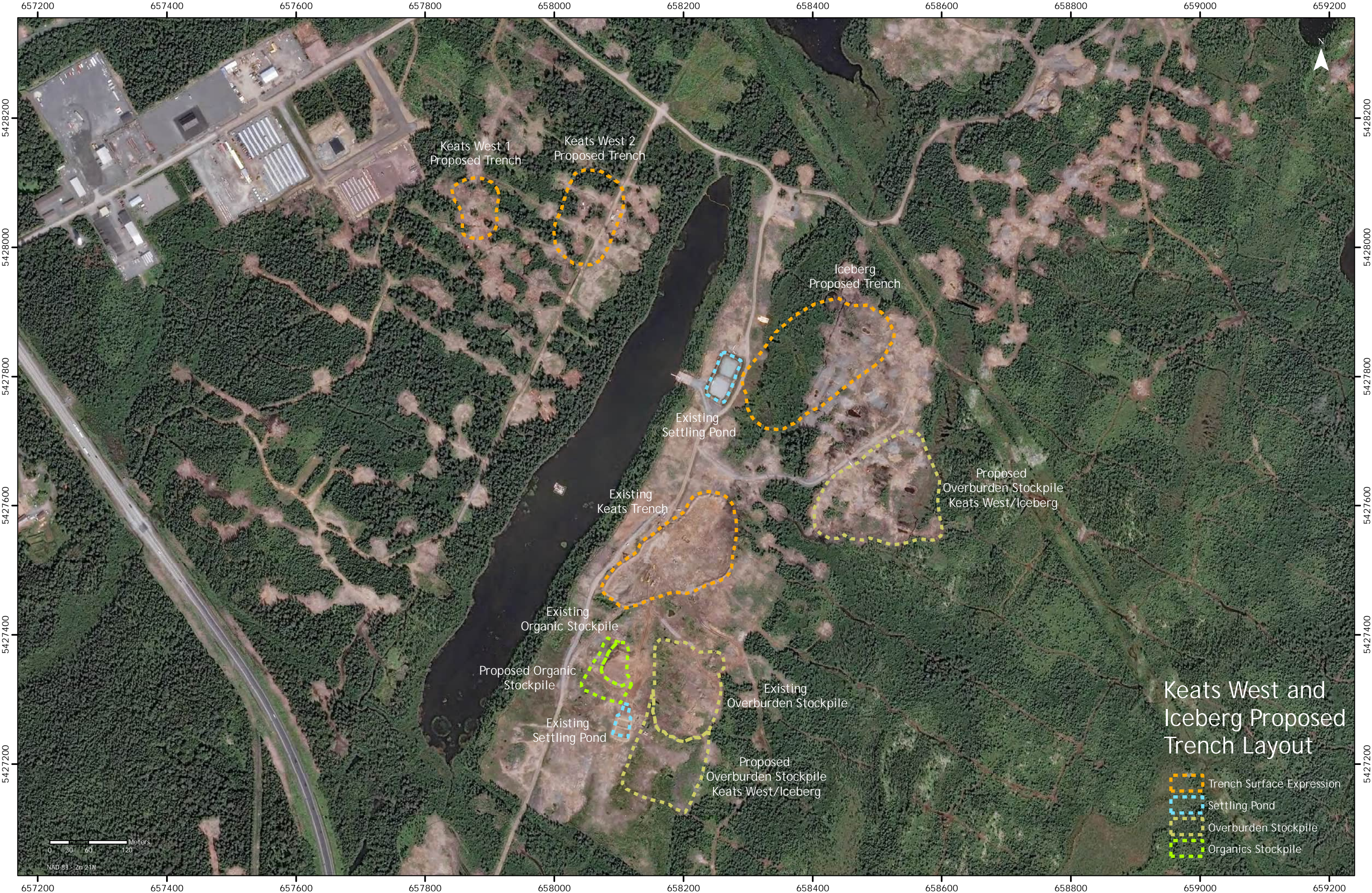
## **Appendix 2**

### **Project Review Maps**

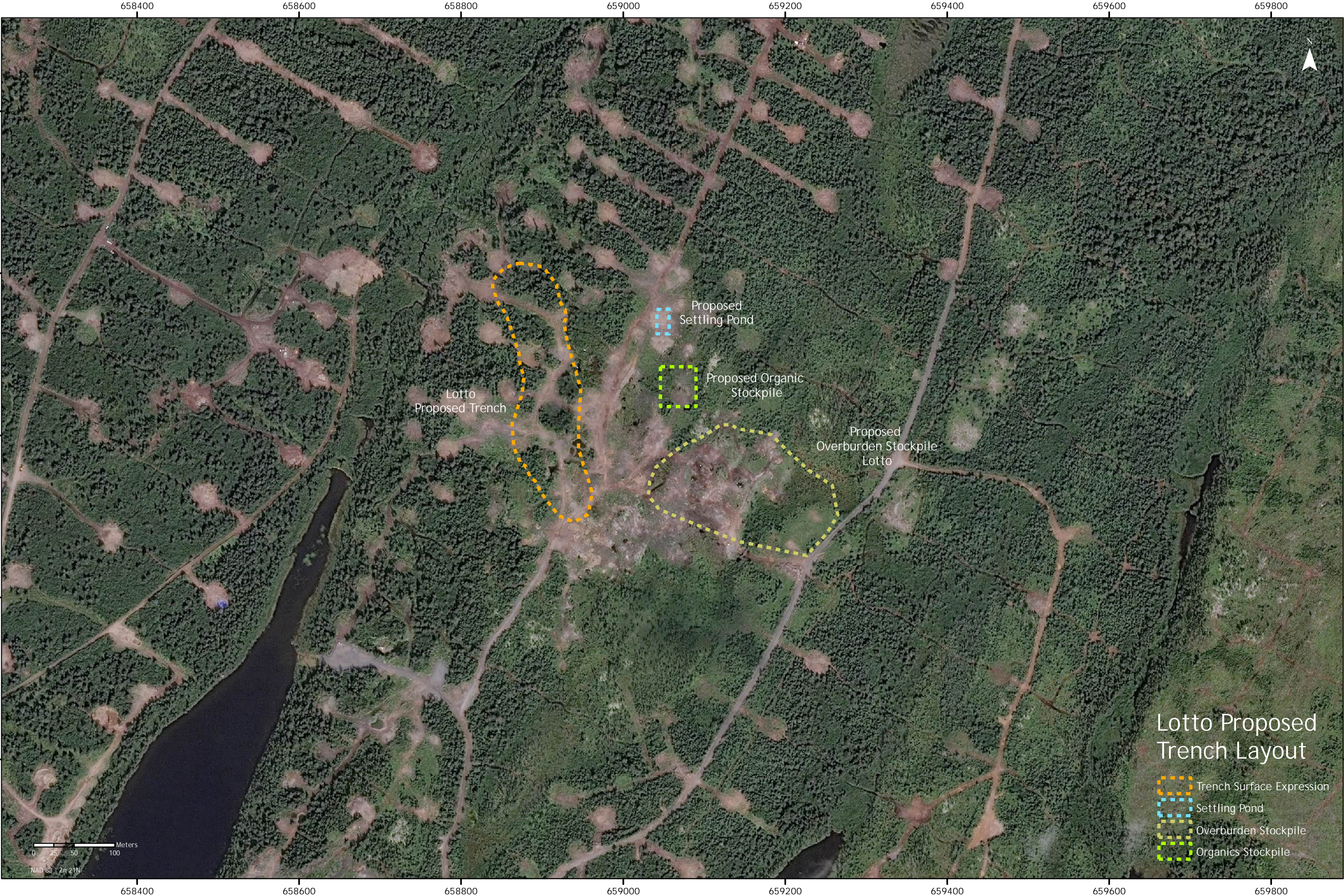
Map 1 Iceberg Zone & Keats West Zone – Planned Trench Layout

Map 2 Lotto Zone – Planned Trench Layout









## Lotto Proposed Trench Layout

- Trench Surface Expression
- Settling Pond
- Overburden Stockpile
- Organics Stockpile