



The Newfoundland and Labrador Gazette

PART I
PUBLISHED BY AUTHORITY

Vol. 100

ST. JOHN'S, FRIDAY, OCTOBER 10, 2025

No. 41

MINERAL ACT

NOTICE

Published in accordance with section 62 of CNLR 1143/96 under the *Mineral Act*, cM-12, RSNL 1990 as amended.

Mineral rights to the following mineral Licenses have reverted to the Crown:

Mineral Licence held by on map sheet	023518M Chain Rock Exploration Ltd. 12A/10
--------------------------------------	--

A portion of licence held by on map sheet	026674M Puddle Pond Resources Inc. 02D/09 more particularly described in an application on file at Dept. of Natural Resources
---	--

Mineral Licence held by on map sheet	034506M Alterra Resources Inc. 13A/09
--------------------------------------	---

A portion of licence held by on map sheet	036335M Puddle Pond Resources Inc. 12H/08 more particularly described
---	--

A portion of licence held by on map sheet

A portion of licence held by on map sheet

A portion of licence held by on map sheet

A portion of licence held by on map sheet

in an application on file at
Dept. of Natural Resources

036336M
Puddle Pond Resources Inc.
12H/08
more particularly described in an application on file at Dept. of Natural Resources

032596M
Puddle Pond Resources Inc.
12H/01
more particularly described in an application on file at Dept. of Natural Resources

036688M
Puddle Pond Resources Inc.
12H/01
more particularly described in an application on file at Dept. of Natural Resources

039315M
Puddle Pond Resources Inc.
12H/01
more particularly described in an application on file at Dept. of Natural Resources

A portion of licence held by on map sheet	036337M Puddle Pond Resources Inc. 12H/08 more particularly described in an application on file at Dept. of Natural Resources	Mineral Licence held by on map sheet	037161M March, Joshua 01N/12, 01N/13
A portion of licence held by on map sheet	038132M Puddle Pond Resources Inc. 12H/01 more particularly described in an application on file at Dept. of Natural Resources	Mineral Licence held by on map sheet	037163M Sheppard, Stephen 01N/13
Mineral Licence held by on map sheet	033710M Collins, Arlene 12H/08, 12H/07	Mineral Licence held by on map sheet	037164M Sheppard, Stephen 01N/12
Mineral Licence held by on map sheet	037405M Puddle Pond Resources Inc. 12A/04, 12A/05	Mineral Licence held by on map sheet	037168M Mercer, George J. 12A/06
Mineral Licence held by on map sheet	033903M Rocky Shore Metals Ltd. 12H/07, 12H/10	Mineral Licence held by on map sheet	037181M Rocky Shore Metals Ltd. 12H/10
Mineral Licence held by on map sheet	038842M Keeping, Gregory 13H/05	Mineral Licence held by on map sheet	037182M Rocky Shore Metals Ltd. 12H/10
Mineral Licence held by on map sheet	037092M Pike, Barbara 02D/15	Mineral Licence held by on map sheet	037190M Bailey, Alex 12A/10
Mineral Licence held by on map sheet	037093M Collier, Ross 02C/05	Mineral Licence held by on map sheet	037191M Guinchard, Wayde 14D/08
Mineral Licence held by on map sheet	037094M Collier, Ross 02C/05	Mineral Licence held by on map sheet	037192M Sans Peur Exploration Services Inc. 02F/04
Mineral Licence held by on map sheet	037096M Lannon, Rosalind 12A/09	Mineral Licence held by on map sheet	037196M Bailey, Alex 12A/10
Mineral Licence held by on map sheet	037097M McLennon, Tom 12H/15	Mineral Licence held by on map sheet	037197M Bailey, Alex 12A/10
Mineral Licence held by on map sheet	037098M McLennon, Tom 12H/15	Mineral Licence held by on map sheet	037199M Bailey, Alex 12A/10
Mineral Licence held by on map sheet	037100M McLennon, Tom 12H/15	Mineral Licence held by on map sheet	037200M Bailey, Alex 12A/10
Mineral Licence held by on map sheet	037122M Laking, Daniel 02E/08	Mineral Licence held by on map sheet	037205M Shoreline Exploration Inc. 12A/06
		Mineral Licence held by on map sheet	037211M Shoreline Exploration Inc. 12A/11

Mineral Licence held by on map sheet	037224M Rodway, Nick 13H/06	Mineral Licence held by on map sheet	037252M Brunswick Exploration Incorporated 13A/11
Mineral Licence held by on map sheet	037233M Taylor, Michael 02M/14	Mineral Licence held by on map sheet	037253M Brunswick Exploration Incorporated 13A/14
Mineral Licence held by on map sheet	037235M Bailey, Alex 01M/11	Mineral Licence held by on map sheet	037254M Brunswick Exploration Incorporated 13A/14
Mineral Licence held by on map sheet	037238M Burse, Brian 12A/09	Mineral Licence held by on map sheet	037255M Brunswick Exploration Incorporated 13A/13
Mineral Licence held by on map sheet	037243M Brunswick Exploration Incorporated 03D/04	Mineral Licence held by on map sheet	037256M Brunswick Exploration Incorporated 13A/13
Mineral Licence held by on map sheet	037244M Brunswick Exploration Incorporated 13A/01	Mineral Licence held by on map sheet	037257M Brunswick Exploration Incorporated 13H/04
Mineral Licence held by on map sheet	037245M Brunswick Exploration Incorporated 03D/05	Mineral Licence held by on map sheet	037258M Brunswick Exploration Incorporated 13H/04
Mineral Licence held by on map sheet	037246M Brunswick Exploration Incorporated 13A/07	Mineral Licence held by on map sheet	037259M Brunswick Exploration Incorporated 13H/04
Mineral Licence held by on map sheet	037247M Brunswick Exploration Incorporated 13A/06	Mineral Licence held by on map sheet	037260M Brunswick Exploration Incorporated 13H/04
Mineral Licence held by on map sheet	037248M Brunswick Exploration Incorporated 13A/06	Mineral Licence held by on map sheet	037261M Brunswick Exploration Incorporated 13H/04
Mineral Licence held by on map sheet	037249M Brunswick Exploration Incorporated 13B/07	Mineral Licence held by on map sheet	037262M Brunswick Exploration Incorporated 13H/04
Mineral Licence held by on map sheet	037250M Brunswick Exploration Incorporated 13B/09, 13B/10	Mineral Licence held by on map sheet	037263M Brunswick Exploration Incorporated 13H/04
Mineral Licence held by on map sheet	037251M Brunswick Exploration Incorporated 13A/10		

Mineral Licence held by	037264M Brunswick Exploration Incorporated	Mineral Licence held by	037277M Brunswick Exploration Incorporated
on map sheet	13H/04	on map sheet	03D/13, 03D/12
Mineral Licence held by	037265M Brunswick Exploration Incorporated	Mineral Licence held by	037278M Brunswick Exploration Incorporated
on map sheet	13H/04	on map sheet	03D/13
Mineral Licence held by	037266M Brunswick Exploration Incorporated	Mineral Licence held by	037279M Brunswick Exploration Incorporated
on map sheet	13A/13	on map sheet	03D/13
Mineral Licence held by	037267M Brunswick Exploration Incorporated	Mineral Licence held by	037280M Brunswick Exploration Incorporated
on map sheet	13A/13	on map sheet	03D/13
Mineral Licence held by	037268M Brunswick Exploration Incorporated	Mineral Licence held by	037281M Brunswick Exploration Incorporated
on map sheet	13H/03	on map sheet	03D/13
Mineral Licence held by	037269M Brunswick Exploration Incorporated	Mineral Licence held by	037282M Brunswick Exploration Incorporated
on map sheet	13H/03	on map sheet	03D/13, 13A/16
Mineral Licence held by	037270M Brunswick Exploration Incorporated	Mineral Licence held by	037283M Brunswick Exploration Incorporated
on map sheet	13H/03	on map sheet	13A/16
Mineral Licence held by	037271M Brunswick Exploration Incorporated	Mineral Licence held by	037284M Brunswick Exploration Incorporated
on map sheet	13H/03	on map sheet	13A/16
Mineral Licence held by	037272M Brunswick Exploration Incorporated	Mineral Licence held by	037285M Brunswick Exploration Incorporated
on map sheet	13A/14	on map sheet	13H/01, 13A/16
Mineral Licence held by	037273M Brunswick Exploration Incorporate	Mineral Licence held by	037286M Brunswick Exploration Incorporated
on map sheet	13A/14	on map sheet	13H/01
Mineral Licence held by	037274M Brunswick Exploration Incorporated	Mineral Licence held by	037287M Brunswick Exploration Incorporated
on map sheet	13A/14	on map sheet	03E/04
Mineral Licence held by	037275M Brunswick Exploration Incorporated	Mineral Licence held by	037288M Brunswick Exploration Incorporated
on map sheet	13A/14	on map sheet	03E/04
Mineral Licence held by	037276M Brunswick Exploration Incorporated	Mineral Licence held by	037289M Brunswick Exploration Incorporated
on map sheet	13H/05	on map sheet	13H/02

Mineral Licence 037290M
held by Brunswick Exploration
 Incorporated
on map sheet 13H/02

Mineral Licence 037291M
held by Brunswick Exploration
 Incorporated
on map sheet 13H/02

The lands covered by this notice except for the lands within Exempt Mineral Lands, the Exempt Mineral Lands being described in Consolidated Mineral Regulation 1143/96 and Mineral Regulations 71/98, 104/98, 97/00, 36/01, 31/04 and 78/06 and outlined on 1:50 000 scale maps maintained by the Department of Natural Resources, will be open for staking after the hour of 9:00 a.m. on the 32nd clear day after the date of this publication.

DEPARTMENT OF INDUSTRY,
ENERGY AND TECHNOLOGY
Trina Adams, Mineral Claims Recorder

Oct. 10

TOWNS AND LOCAL SERVICE DISTRICTS ACT

CITY OF CORNER BROOK GARBAGE AND REFUSE REGULATIONS, 2025

Pursuant to the authority granted under Sections 207, 208, 209, 210, 280.1, 280.2, and 280.4 of the *City of Corner Brook Act*, R.S.N.L. 1990, c. C-15, as amended, and all other enabling powers, the Corner Brook City Council hereby rescinds the Garbage and Refuse Regulations, 2015, and enacts the Garbage and Refuse Regulations, 2025.

Any person(s) who wishes to view a copy of the regulation may do so at the City Clerk's Office, Corner Brook City Hall during regular business hours or visit the City of Corner Brook website at www.cornerbrook.com/bylaws.

These regulations will take effect from the date of publication in *The Newfoundland and Labrador Gazette*.

CITY OF CORNER BROOK
Jessica Smith, City Clerk

Oct. 10

URBAN AND RURAL PLANNING ACT, 2000

NOTICE OF REGISTRATION TOWN OF PARADISE MUNICIPAL PLAN AMENDMENT 5 & DEVELOPMENT REGULATIONS AMENDMENT 27, 2025 (Commercial Mainstreet (CM) – Residential Use Provisions)

TAKE NOTICE that the PARADISE MUNICIPAL PLAN AMENDMENT 5 and DEVELOPMENT REGULATIONS AMENDMENT 27, 2025, adopted on the 22nd day of July, 2025 and approved on the 16th day of September, 2025 by the Town Council, has been registered by the Minister of Municipal Affairs and Community Engagement. This text amendment allows more flexibility in enabling residential uses in the Commercial Mainstreet (CM) zone. The purpose is to change the Municipal Plan policies and Development Regulations to include two additional discretionary uses: subsidiary apartment, and dwelling above or below ground-floor commercial/ office uses.

This Amendment comes into effect on the day this notice is published in *The Newfoundland and Labrador Gazette*. Anyone wishing to inspect a copy of the Amendment may do so by contacting the Town of Paradise during normal hours of operation at (709) 782-1400.

TOWN OF PARADISE
Kim Blanchard, MCIP
Director of Planning and Protective Services

Oct. 10

LANDS ACT

NOTICE OF INTENT, SECTION 7 LANDS ACT, SNL1991 c36 AS AMENDED

NOTICE IS HEREBY given that an application has been made to the Department of Fisheries, Forestry and Agriculture Branch, to acquire title, pursuant to section 7(2) (d) of the said Act, to that piece of Crown lands situated within 15 metres of the waters of Hogans Pond, Portugal Cove-St. Philips, for the purpose of a boathouse and wharf.

The application may intrude on the 15 metre shoreline of the above mentioned water body(s) in various locations. For a detailed map, please see website: <https://www.gov.nl.ca/ffa/lands/sec7notifications/>.

Please note: It may take up to five (5) days from the date of application for details to appear on the website.

Any person wishing to object to the application must file the objection in writing with reasons, within 30 days from the publication of notice on the Department of Fisheries, Forestry and Agriculture website, Crown Lands, <https://www.gov.nl.ca/ffa/lands/>, to the Minister of Department of Fisheries, Forestry and Agriculture by mail or email to the nearest Regional Lands Office:

- Eastern Regional Lands Office, P.O. Box 8700, Howley Building, Higgins Line, St. John's, NL, A1B 4J6
Email: easternlandsoffice@gov.nl.ca
- Central Regional Lands Office, P.O. Box 2222, Gander, NL, A1V 2N9
Email: centrallandsoffice@gov.nl.ca
- Western Regional Lands Office, P.O. Box 2006, Sir Richard Squires Building, Corner Brook, NL, A2H 6J8
Email: westernregionlands@gov.nl.ca
- Labrador Regional Lands Office, P.O. Box 3014, Station "B", Happy Valley-Goose Bay, NL, A0P 1E0
Email: labradorlandsoffice@gov.nl.ca

(DISCLAIMER: *The Newfoundland and Labrador Gazette* publishes a NOTICE OF INTENT as received from the Applicant and takes no responsibility for errors or omissions in the property being more particularly described.)

Oct. 10

QUIETING OF TITLES ACT

2025 06G c125 PETITION TO QUIET A TITLE IN THE SUPREME COURT OF NEWFOUNDLAND AND LABRADOR GENERAL DIVISION

NOTICE OF APPLICATION under the Quieting of Titles Act, RSNL1990 cQ-3.

NOTICE IS HEREBY GIVEN to all parties that DOUGLAS BATSON, of the Town of Gander, in the Province of Newfoundland and Labrador, has applied to the Supreme Court, General Division, Grand Bank, to have title to all that piece or parcel of property situate at the Community of English Harbour, in the District of Bonavista, in the Province of Newfoundland and Labrador, which property is more particularly described in Schedules "A", "C" and "E"

hereto annexed and shown in Schedules "B", "D, and "F" hereto annexed.

ALL BEARINGS aforementioned, for which DOUGLAS BATSON claims to be the owner investigated and for a Declaration that DOUGLAS BATSON is the absolute owner in fee simple in possession and the said DOUGLAS BATSON has been ordered to publish this Notice of Application as required by the above named Act.

ALL PERSONS having title adverse to the said title claimed by the said DOUGLAS BATSON shall file in the Registry of the Supreme Court of Newfoundland and Labrador, Grand Bank, particulars of such adverse claim and serve the same together with an Affidavit verifying same on the undersigned Solicitors for the Petitioner on or before the 12th day of November, 2025, after which date no party having any claim shall be permitted to file the same or to be heard except by special leave of the Court and subject to such conditions as the Court may deem just.

All such adverse claims shall be investigated then in such manner as the Supreme Court of Newfoundland and Labrador, Grand Bank, may direct.

DATED AT Clarenville, in the Province of Newfoundland and Labrador, this 20th day of August, 2025.

MILLS PITTMAN TWYNE LAW OFFICES
Solicitors for the Applicant
PER: GREGORY J. FRENCH

ADDRESS FOR SERVICE:

111 Manitoba Drive
Suite 201
Clarenville, NL
A5A 1K2

Tel: (709) 466-2641
Fax: (709) 466-7109
Email: apollard@mhplawfirm.com

SCHEDULE "A"

W. HARRIS SURVEYS LTD
NEWFOUNDLAND LAND SURVEYORS
P.O. Box 142 Phone No. 468-7482
Bonavista, NL Fax No. 468-7482
A0C 1B0

DESCRIPTION

ALL THAT piece or parcel of land situate and being at English Harbour, in the Electoral District

of Bonavista, in the Province of Newfoundland and Labrador, Canada, abutted and bounded as follows, that is to say:

BEGINNING at a point in the southeastern limit of a Local Road, the said point having NAD 83 Co-ordinates of N5359 552.602 metres and E285 196.722 metres of the 3° Transverse Mercator Grid Projection for the Province of Newfoundland and Labrador.

THENCE running along the aforesaid southeastern limit of a Local Road north fifty six degrees thirty four minutes fifty three seconds east twenty eight decimal one two one metres.

THENCE running by Crown Land south sixteen degrees twenty five minutes zero zero seconds east twenty seven decimal eight two one metres.

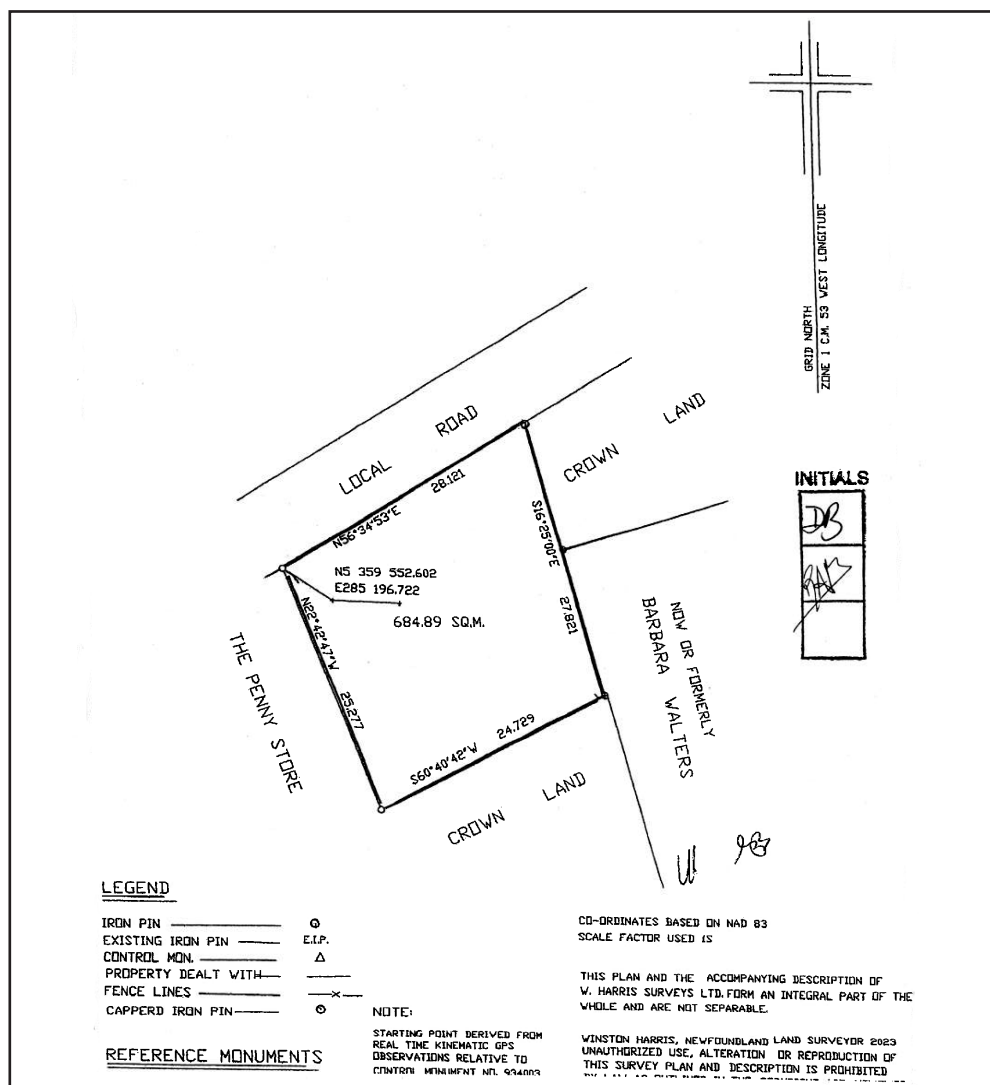
THENCE running by Crown Land south sixty degrees forty minutes forty two seconds west twenty four decimal seven two nine metres.

THENCE running by land of The Penny Store north twenty two degrees forty two minutes forty seven seconds west twenty five decimal two seven seven metres, more or less, to the point of beginning.

CONTAINING an area of 684.89 sq. metres, more or less, and being more particularly shown and delineated on the diagram annexed hereto.

ALL BEARINGS being referred to Grid North of the above mentioned Projection

SCHEDULE "B"



**DESCRIPTION OF PROPERTY SURVEY FOR
LAND CLAIMED BY
DOUGLAS R. BATSON
PARCEL 'A'
COMMUNITY OF ENGLISH HARBOUR, NL**

ALL THAT certain lot, piece or parcel of land situate and being at English Harbour, in the Electoral District of Trinity North, Province of Newfoundland and Labrador, abutted and bounded as follows, that is to say;

COMMENCING at a point in the Southeasterly Limit of Local Side Road, fifteen decimal two four (15.24) metres wide, said point being a capped iron pin and having starting coordinates of North 5 359 536.790 metres and East of 285 166.550 metres as referenced to Survey Control Monument No. 934003;

THENCE running by land occupied by The Penny Store, South thirty degrees twenty-two minutes fifteen seconds East (S 30°-22'-15"E), forty decimal six eight three (40.683) metres;

THENCE running by land of Don Walters or Assigns, South fifty degrees twenty-one minutes fifty-five seconds West (S 50°-21'-55"W), fifty-one decimal zero two three (51.023) metres;

AND THENCE, South seventy-two degrees ten minutes thirty-five seconds West (S 72°-10'-35" W), forty-three decimal seven six six (43.766) metres;

AND THENCE, South eighty-four degrees zero three minutes forty-seven seconds West (S 84°-03'-47" W), twenty-six decimal zero nine four (26.094) metres;

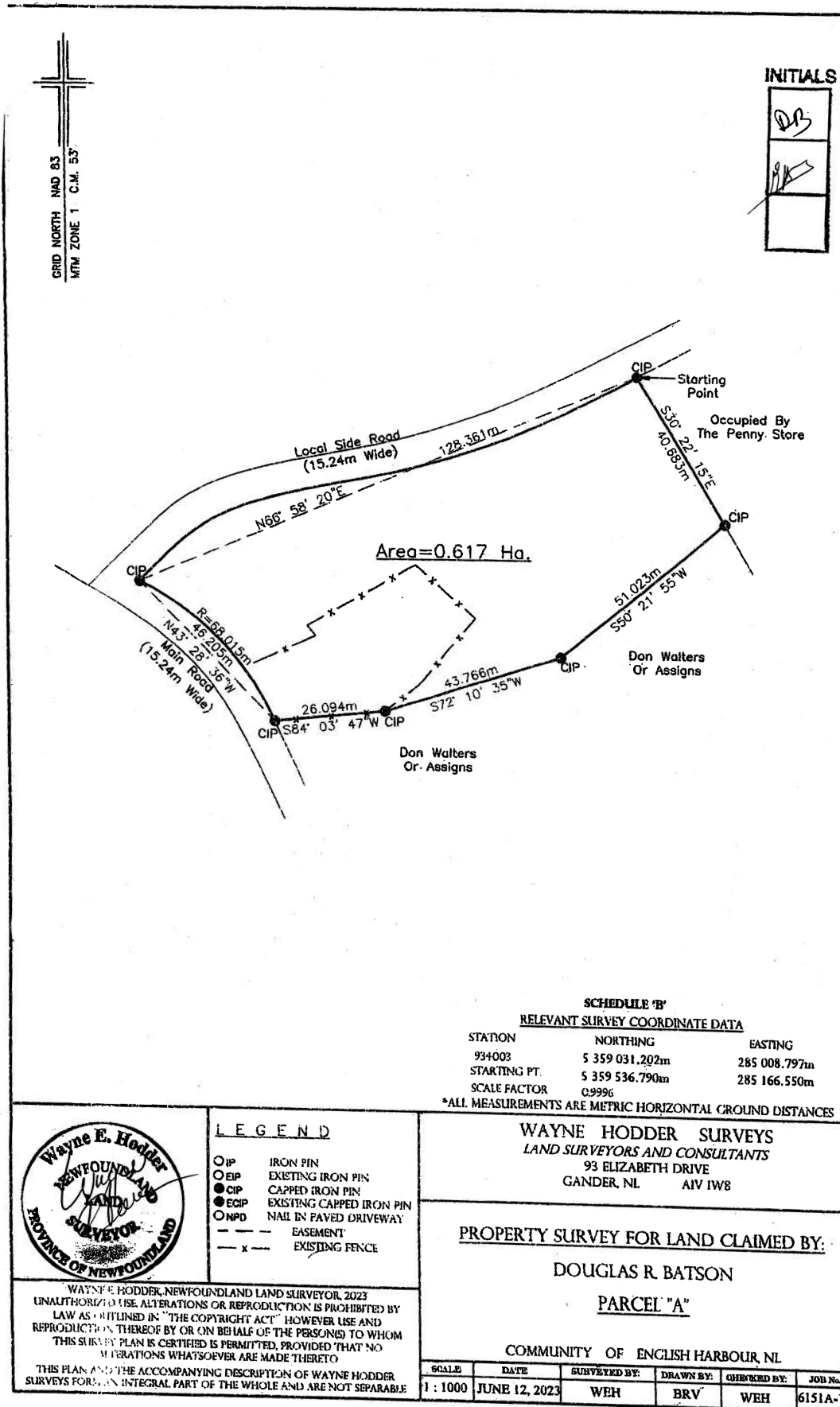
THENCE running by the Northeasterly Limit of Main Road, fifteen decimal two four (15.24) metres wide, along a curve having a radius of sixty-eight decimal zero one five (68.015) metres wide to a point being distant forty-six decimal two zero five (46.205) metres as measured on a bearing of North forty-three degrees twenty-eight minutes thirty-six seconds West (N 43°-28'-36" W);

THENCE running by the aforementioned Southeasterly Limit of Local Side Road, fifteen decimal two four (15.24) metres wide, along a curve to a point being distant one hundred twenty-eight decimal three six one (128.361) metres as measured on a bearing of North sixty-six degrees fifty-eight minutes twenty seconds East (N 66°-58'-20" E), more or less, to the point of commencement.

The above described piece or parcel of land containing, in all, an area of 0.617 Hectares, more or less.

All bearings being referenced to the Meridian of 53° West Longitude of the Three Degree Modified Transverse Mercator Projection (Zone 1 - Nad 83 Datum).

Richard V. Legge
Newfoundland Land Surveyor



**DESCRIPTION OF PROPERTY SURVEY FOR
LAND CLAIMED BY
DOUGLAS R. BATSON
PARCEL 'C'
COMMUNITY OF ENGLISH HARBOUR, NL**

ALL THAT certain lot, piece or parcel of land situate and being at English Harbour, in the Electoral District of Trinity North, Province of Newfoundland and Labrador, abutted and bounded as follows, that is to say;

COMMENCING AT A POINT in the Northwesterly Limit of an Existing ATV Trail, five decimal zero (5.0) metres wide, said point being a capped iron pin and having starting co-ordinates of North 5 359 851.449 metres and East of 285 541.943 metres as referenced to Survey Control Monument No. 934003;

THENCE running by Crown Land, North twenty-one degrees twenty-eight minutes twenty-three seconds West (N 21°-28'-23" W), seventy-nine decimal four eight one (79.481) metres;

AND THENCE, North thirty-six degrees fifty-one minutes fourteen seconds East (N 36°-51'-14" E), thirty-five decimal eight seven zero (35.870) metres;

AND THENCE, North eighty-seven degrees nineteen minutes twenty-eight seconds East (N 87°-19'-28" E), thirty-one decimal five one one (31.511) metres;

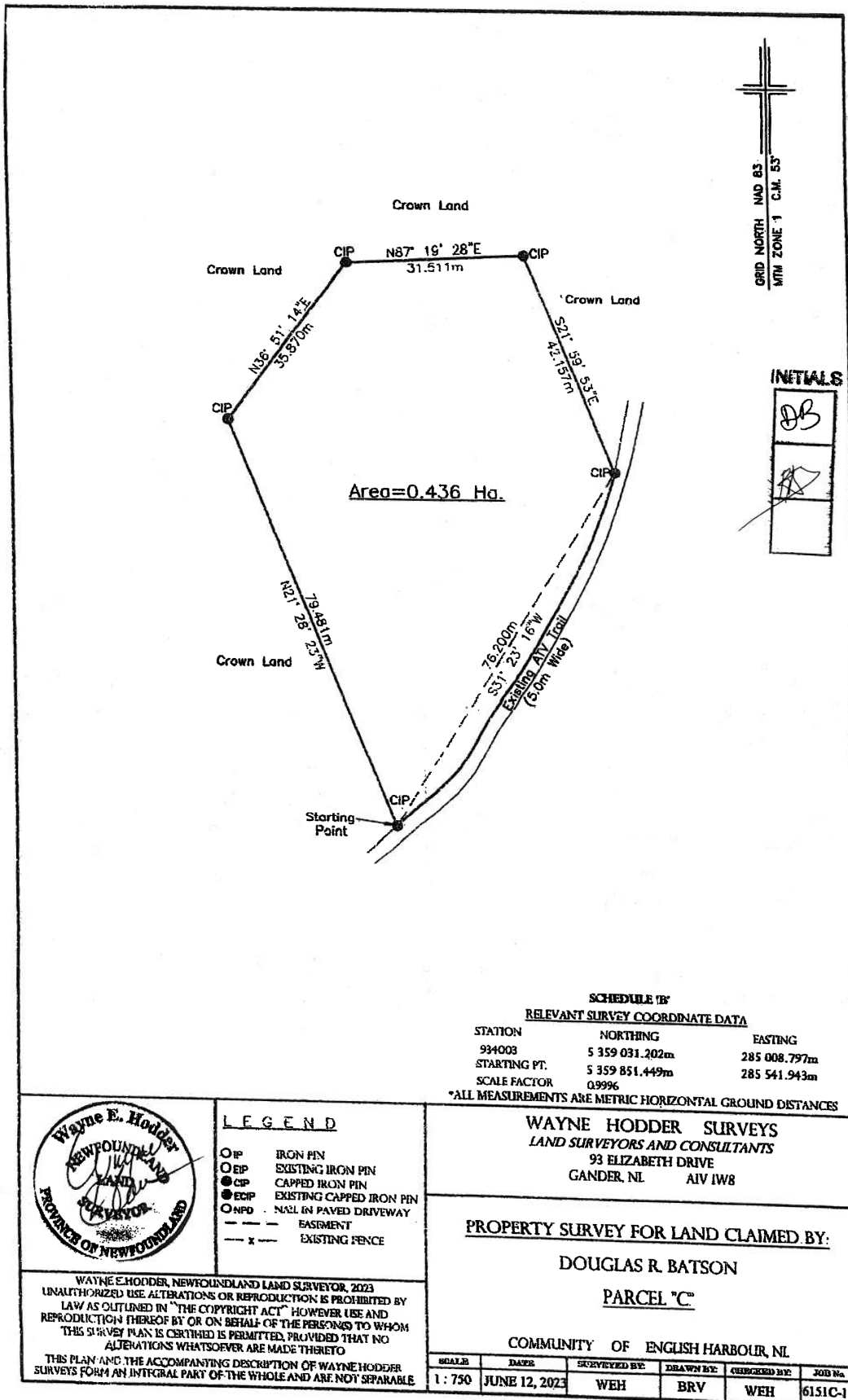
AND THENCE, South twenty-one degrees fifty-nine minutes fifty-three seconds East (S 21°-59'-53" E), forty-two decimal one five seven (42.157) metres;

THENCE running by the aforementioned Northwesterly Limit of an Existing ATV Trail, five decimal zero (5.0) metres wide, to a point being distant seventy-six decimal two zero zero (76.200) metres as measured on a bearing of South thirty-one degrees twentythree minutes sixteen seconds West (S 31°-23'-16" W), more or less, to the point of commencement.

The above described piece or parcel of land containing, in all, an area of 0.436 Hectares, more or less.

All bearings being referenced to the Meridian of 53° West Longitude of the Three Degree Modified Transverse Mercator Projection (Zone 1 - Nad 83 Datum).

Richard V. Legge
Newfoundland Land Surveyor



2025 01G 3995
PETITION TO QUIET A TITLE
IN THE SUPREME COURT OF
NEWFOUNDLAND AND LABRADOR
GENERAL DIVISION

IN THE MATTER OF those pieces or parcels of land situate at Peacekeepers Way, in the Cities of St. John's and Paradise, Province of Newfoundland and Labrador, and an Application by ROSALIND PRATT as Administratrix of the Estate of ELIZABETH THISTLE pursuant to the Quieting of Titles Act, RSNL 1990, c Q-3, as amended;

NOTICE OF APPLICATION UNDER THE
QUIETING OF TITLES ACT, R.S.N.L. 1990 C.
Q-3 AS AMENDED

NOTICE IS HEREBY GIVEN to all parties that ROSALIND PRATT, in her capacity as Administratrix of the Estate of ELIZABETH THISTLE, of St. John's, in Province of Newfoundland and Labrador has applied to the Supreme Court of Newfoundland and Labrador, General Division, to have the Estate's title to all those piece or parcel of land situate at the southern and northern sides, respectively, of the Peacekeepers Highway (formerly known as the Conception Bay South Bypass Road), in the Cities of St. John's and Paradise (respectively), Province of Newfoundland and Labrador, and more particularly described and outlined in Schedule "A" as attached hereto in this matter in the Registry of the Supreme Court of Newfoundland and Labrador General Division, at St. John's, investigated and for a declaration that the said Estate is the absolute owner thereof.

ALL PERSONS having title adverse to the said title claimed by the Applicant shall file in the Registry of the Supreme Court of Newfoundland and Labrador, General Division, particulars of such adverse claim and serve same, together with an Affidavit verifying the same, on the undersigned solicitors for the Applicant on or before the 14th day of November, 2025, after which date no party having any claim shall be permitted to file the same or to be heard except by special leave of the Court and subject to such conditions as the Court may deem just. All adverse claims shall be investigated in such manner as the Supreme Court may direct.

DATED at St. John's, in the Province of Newfoundland and Labrador, this 26th day of September, 2025.

CATHERINE HUTCHENS
McInnes Cooper
Solicitors for the Applicant

ADDRESS FOR SERVICE:
5th Floor, Baine Johnston Centre
10 Fort William Place, P.O. Box 5939
St. John's, NL A1C 5X4

SURVEY DESCRIPTION FOR THE
ESTATE OF BEATRICE TAYLOR
PARCEL A, CBS BYPASS ROAD,
ST. JOHN'S, NL

ALL THAT piece or parcel of land situated and being on the southern side of CBS Bypass Road, in the City of St. John's, in the electoral district of Conception Bay South, in the Province of Newfoundland & Labrador and being abutted as follows, that is to say:

BEGINNING at a point, said point having NAD83 coordinates of North 5262845.455 meters and East 313595.559 meters with reference to Crown Land Monument No. 96G6151 having coordinates of North 5262896.171 meters and East 314522.428 meters and Crown Land Monument No. 96G6150 having coordinates of North 5262518.792 meters and East 312588.314 meters of the Modified Three Degree, Transverse Mercator Projection for Newfoundland having a central meridian of 53 degrees west longitude;

THENCE running along land now or formerly belonging to David Templeton, South thirty-seven degrees zero zero minutes zero seven seconds East, three hundred forty-seven decimal eight four nine meters;

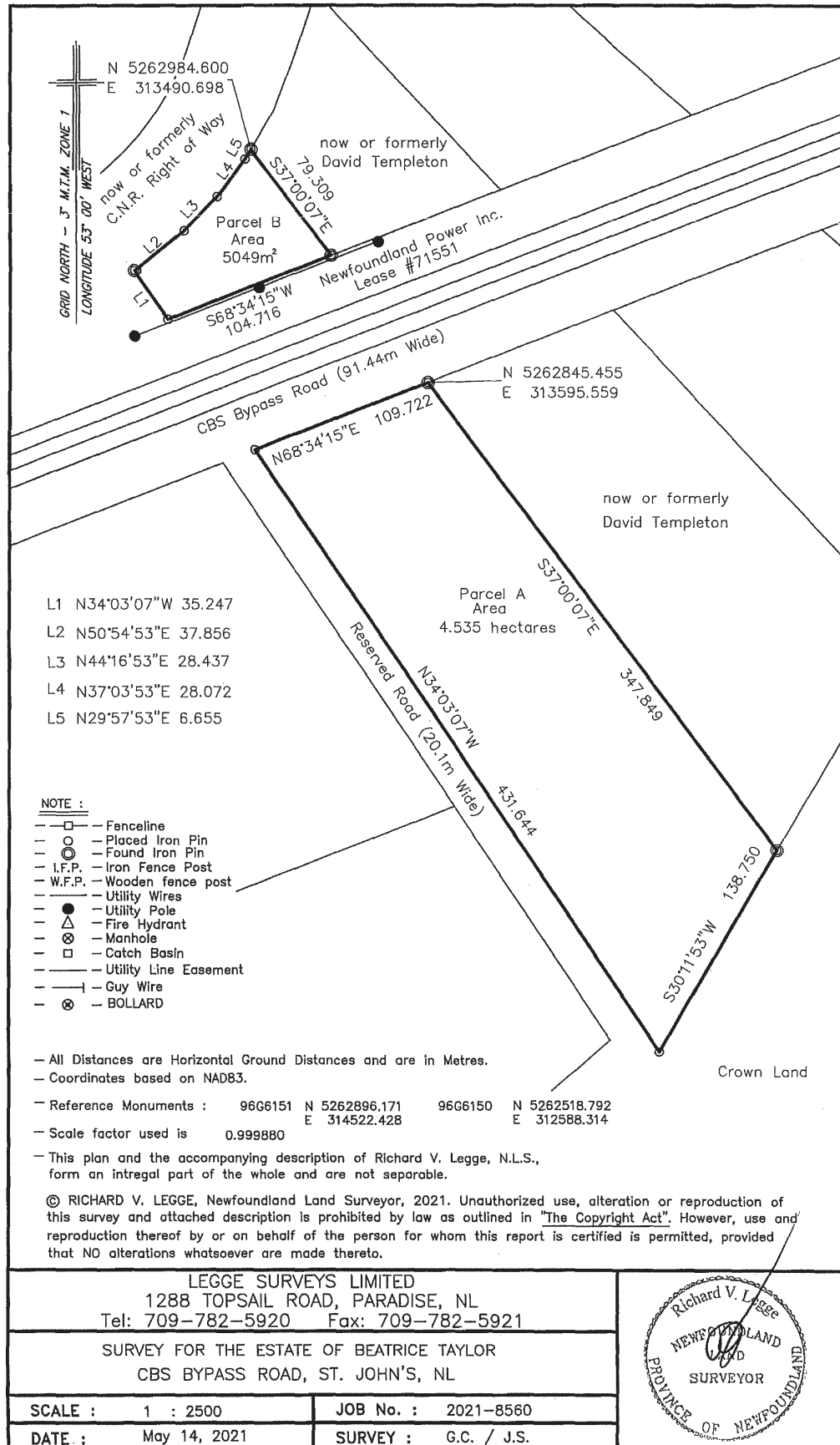
THENCE running along Crown Land, South thirty degrees eleven minutes fifty-three seconds West, one hundred thirty-eight decimal seven five zero meters;

THENCE running along a Reserved Road (20.1m wide) North thirty-four degrees zero three minutes zero seven seconds West, four hundred thirty-one decimal six four four meters;

THENCE running along CBS Bypass Road (91.44m wide), North sixty-eight degrees thirty-four minutes fifteen decimal East, one hundred nine decimal seven two two meters, more or less, to the point of beginning.

The above-described parcel of land has an area of 4.535 hectares, more or less, and is shown more fully delineated on the adjoining plan having job number 2021-8560 dated May 14, 2021. All bearings are referred to grid north in the above-mentioned projection. All distances are horizontal ground distances.

Richard V. Legge
Newfoundland Land Surveyor



**SURVEY DESCRIPTION FOR THE
ESTATE OF BEATRICE TAYLOR
PARCEL B,
CBS BYPASS ROAD, PARADISE, NL**

number 2021-8560 dated May 14, 2021. All bearings are referred to grid north in the above-mentioned projection. All distances are horizontal ground distances.

ALL THAT piece or parcel of land situated and being on the northern side of CBS Bypass Road, in the town of Paradise, in the electoral district of Topsail, in the Province of Newfoundland & Labrador and being abutted as follows, that is to say:

BEGINNING at a point, said point having NAD83 coordinates of North 5262984.600 meters and East 313490.698 meters with reference to Crown Land Monument No. 96G6151 having coordinates of North 5262896.171 meters and East 314522.428 meters and Crown Land Monument No. 96G6150 having coordinates of North 5262518.792 meters and East 312588.314 meters of the Modified Three Degree Transverse Mercator Projection for Newfoundland having a central meridian of 53 degrees west longitude;

THENCE running along land now or formerly belonging to David Templeton, South thirty-seven degrees zero zero minutes zero seven seconds East, seventy-nine decimal three zero nine meters;

THENCE running along CBS Bypass Road (91.44m wide), South sixty-eight degrees thirty-four minutes fifteen seconds West, one hundred four decimal seven one six meters;

THENCE running North thirty-four degrees zero three minutes zero seven seconds West, thirtyfive decimal two four seven meters;

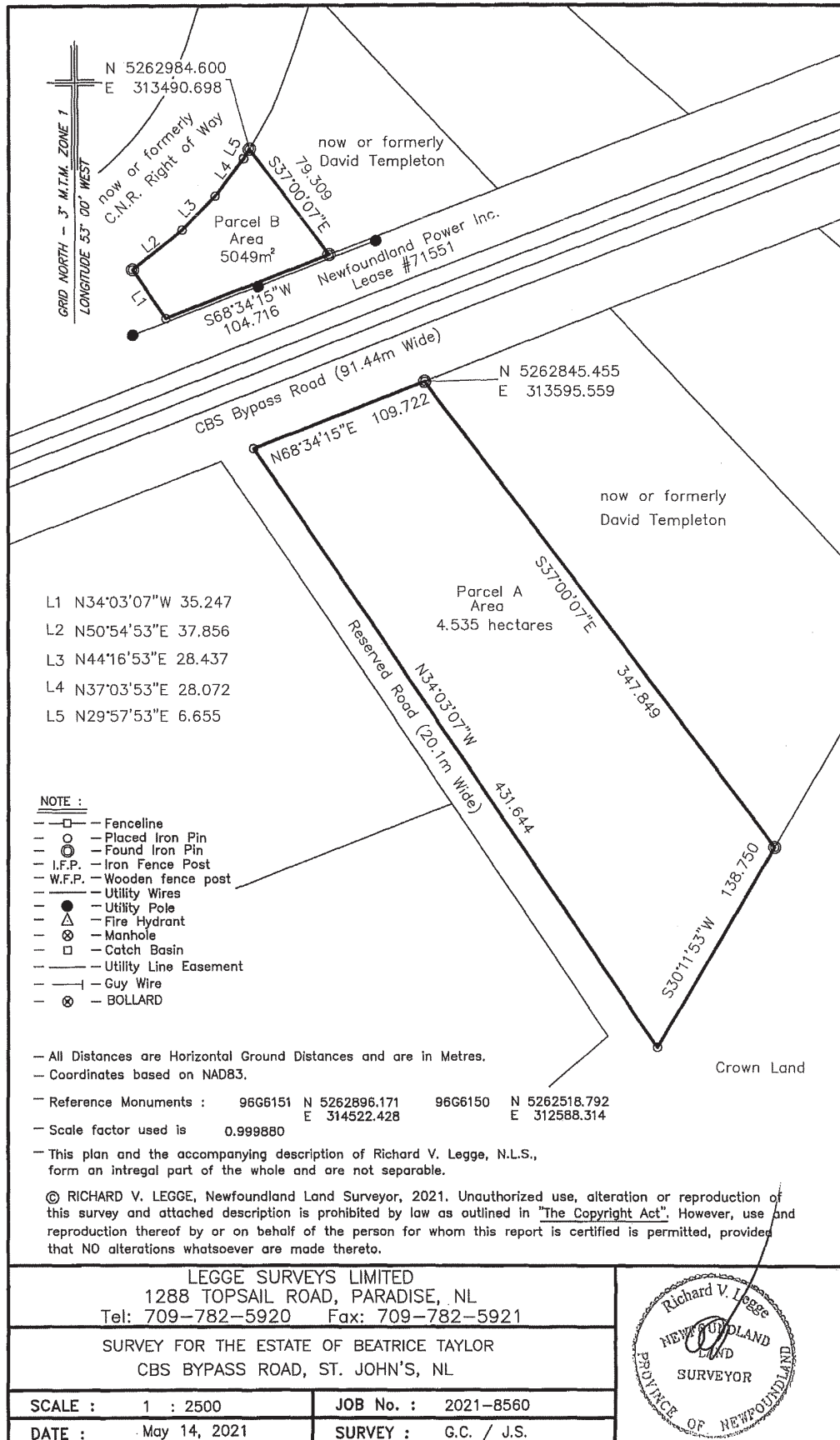
THENCE running along land now or formerly a C.N.R. Right of Way, North fifty degrees fiftyfour minutes fifty-three seconds East, thirty-seven decimal eight five six meters;

THENCE running North forty-four degrees sixteen minutes fifty-three seconds East, twenty-eight decimal four three seven meters;

THENCE running North thirty-seven degrees zero three minutes fifty-three seconds East, twenty-eight decimal zero seven two meters;

THENCE running North twenty-nine degrees fifty-seven minutes fifty-three seconds East, six decimal six five five meters, more or less, to the point of beginning.

The above-described parcel of land has an area of 5049 square meters, more or less, and is shown more fully delineated on the adjoining plan having job



TRUSTEE ACT**ESTATE NOTICE**

IN THE MATTER OF the Estate and Effects of late GREGORY WILLIAM CASHIN, of Gambo, in the Province of Newfoundland & Labrador, Businessman, Deceased.

ALL PERSONS claiming to be creditors of or who have any claims or demands upon or affecting the Estate of GREGORY WILLIAM CASHIN, the aforesaid deceased, who died at the Town of Gander, Newfoundland and Labrador, on or about the 24th day of July, 2025, are hereby requested to send particulars thereof in writing, duly attested, to the undersigned Solicitor for the Administratrix of the Estate on or before the 14th day of October, 2025 after which date the Administratrix have had notice.

DATED at the Town of Gander, Newfoundland and Labrador, this 24th day of September, 2025.

PEDDLE LAW
Solicitor for the Administratrix
PER: MICHAEL D. PEDDLE

ADDRESS FOR SERVICE:
P.O. Box 563
137 Bennett Drive
Gander, NL A1V 2E1

Tel: (709) 651-4949
Fax: (709) 651-4951

Oct. 10

ESTATE NOTICE

2025 01E 26103
IN THE SUPREME COURT OF
NEWFOUNDLAND AND LABRADOR
GENERAL DIVISION

IN THE ESTATE OF MELINA ELIZABETH JOAN COURTE, late of the City of Vancouver, in the Province of British Columbia, Gentlewoman, Divorced, Deceased, who died on or about the 24th day of December, 2024.

ALL PERSONS claiming to be creditors or who have any claims or demands upon or affecting the Estate of MELINA ELIZABETH JOAN COURTE, late of the City of Vancouver, in the Province British Columbia aforesaid, Gentlewoman, Divorced, Deceased, are hereby requested to send particulars therein in writing, duly attested, to Alysa O'Keefe of Cox &

Palmer, Solicitors for the Estate of the deceased, on or before the 24th day of November, 2025, after which date the Executor will proceed to distribute the said estate, having regard only to the claims of which it shall then have had notice.

DATED at the City of St. John's, in the Province of Newfoundland and Labrador, this 2nd day of October, 2025.

COX & PALMER
Solicitors for the Estate of
MELINA ELIZABETH JOAN COURTE
PER: ALYSA O'KEEFE

ADDRESS FOR SERVICE:
Suite 1100, Scotia Centre
235 Water Street
St. John's, NL A1C 1B6

Tel: (709) 570-5553
Fax: (709) 738-7999

Oct. 10

ESTATE NOTICE

IN THE MATTER OF the Estate of KENNETH JOSEPH SLANEY, late of Paradise, in the Province of Newfoundland and Labrador, Deceased.

ALL PERSONS claiming to be creditors of or who have any claims or demands either as beneficiaries or next of kin (by blood, legal adoption or marriage) upon or affecting the Estate of KENNETH JOSEPH SLANEY, who died at St. John's, Newfoundland and Labrador on or about February 15 2024, are hereby requested to send particulars thereof in writing, duly attested, to Terrence Slaney, 19 Bradburys Road, St. Phillips, NL, A1M 1P9, Administrator of the Estate of KENNETH JOSEPH SLANEY, on or before NOVEMBER 7, 2025 after which date the said Administrator will proceed to distribute the Estate having regard only to the claims of which he then shall have had notice.

DATED at St. John's, this 30th day of September 2025.

TERRENCE SLANEY
Administrator of the Estate of
KENNETH JOSEPH SLANEY

ADDRESS FOR SERVICE:
19 Bradburys Road
St. Phillips, NL A1M 1P9

Tel: (709) 690 2973

Oct. 10

ESTATE NOTICE

IN THE ESTATE OF NELLIE PAULINE YETMAN, of Bryant's Cove, in the Province of Newfoundland and Labrador, Deceased.

ALL PERSONS claiming to be creditors of, or who have any claims or demands upon or affecting, the Estate of the late NELLIE PAULINE YETMAN, of Bryant's Cove, in the Province of Newfoundland and Labrador, Deceased, are hereby requested to send particulars thereof in writing, duly attested, to the undersigned Solicitor for the Executrix of the said deceased, on or before the 29th day of October, 2025, after which date the Executrix will proceed to distribute the said Estate having regard only to the claim(s) of which she then shall have had notice.

DATED at Carbonear, in the Province of Newfoundland and Labrador, this 24th day of September, 2025.

BABB LAW OFFICE
Solicitor for the Executrix
PER: JESSICA M. BABB, B.A., J.D.

ADDRESS FOR SERVICE:

P.O. Box 400
18 Goff Avenue
Carbonear, NL A1Y 1B8

Tel: (709) 596-2377
Toll Free: 1-800-596-0596
Fax: (709) 596-0415
Email: babblaw@babblaw.ca

Oct. 3 & 10



The Newfoundland and Labrador Gazette

PART II SUBORDINATE LEGISLATION FILED UNDER THE STATUTES AND SUBORDINATE LEGISLATION ACT

Vol. 100

ST. JOHN'S, FRIDAY, OCTOBER 10, 2025

No. 41

Index

PART I

Lands Act – Notice	599
Mineral Act – Notice	595
Quieting of Titles Act – Notices	600
Trustee Act – Notices	610
Towns and Local Service Districts Act – Notice	599
Urban and Rural Planning Act, 2000 – Notice	599

PART II CONTINUING INDEX OF SUBORDINATE LEGISLATION

Title of Act and Subordinate Legislation made thereunder	CNLR or NL Reg.	Amendment	NL Gazette Date & Page No.
--	--------------------	-----------	-------------------------------

**No Subordinate Legislation
Received at Time of Printing**

The Newfoundland and Labrador Gazette is published from the Office of the King's Printer.

Copy for publication must be received by **Friday, 4:30 p.m.**, seven days before publication date to ensure inclusion in next issue.

Advertisements must be submitted in either PDF format or as a MSWord file. When this is not possible, advertisements must be either, typewritten or printed legibly, separate from covering letter. Number of insertions required must be stated and the names of all signing officers typewritten or printed.

Copy may be mailed to the address below, faxed to (709) 729-1900 or emailed to kingsprinter@gov.nl.ca.
Subscription rate for *The Newfoundland and Labrador Gazette* is \$144.38 for 52 weeks plus 15% HST (\$166.04).
Weekly issues, \$3.47 per copy, plus 15% HST (\$3.99) payable in advance.

All cheques, money orders, etc., should be made payable to THE NEWFOUNDLAND EXCHEQUER ACCOUNT and all correspondence should be addressed to: Office of the King's Printer, P. O. Box 8700, Ground Floor, East Block, Confederation Building, St. John's, NL A1B 4J6, Telephone: (709) 729-3649, Fax: (709) 729-1900.

Web Site: www.gov.nl.ca/dgsnl/printer/gazette/weekly-issues/

The Newfoundland and Labrador Gazette

Advertising Rates

Prices effective July 1, 2016

Notices	Rate	15%	HST Total
Lands Act - Notice of Intent - 1 week	\$31.13	\$4.67	\$35.80
Motor Carrier Act - Notice - 1 week	\$39.90	\$5.99	\$45.89
Trustee Act - Estate Notice - 1 week	\$34.65	\$5.20	\$39.85
Trustee Act - Estate Notice - 2 weeks	\$62.37	\$9.36	\$71.73
Trustee Act - Estate Notice - 3 weeks	\$91.25	\$13.69	\$104.94
Trustee Act - Estate Notice - 4 weeks	\$118.97	\$17.85	\$136.82

All other public notices required by law to be published in *The Newfoundland and Labrador Gazette*, eg., Corporations Act, Municipalities Act, Quieting of Titles Act, Urban and Rural Planning Act, etc., are priced according to size: for Single Column \$3.47 per cm or Double Column \$6.93 per cm, plus 15% HST.

For quotes please contact the Office of the King's Printer kingsprinter@gov.nl.ca

Government Information Product
Publication Rate Mail
G.S.T. # R107442683