

No Subordinate Legislation
received at
time of printing.



The Newfoundland and Labrador Gazette

PART I
PUBLISHED BY AUTHORITY

Vol. 100

ST. JOHN'S, FRIDAY, NOVEMBER 7, 2025

No. 45

CHANGE OF NAME ACT, 2009

Under the authority vested in me by the *Change of Name Act, 2009*, SNL2009 cC-8-1, I hereby certify the following names have been changed.

Former Surname	Former Given Name(s)	Surname	Given Name	Community
ALFAHAD	SHAHAD	ALFAHAD	SHAHAD FAHAD	ST. JOHN'S
ALFAHAD	YARA	ALFAHAD	YARA FAHAD	ST. JOHN'S
ANDERSEN	HANNAH CHANTELLE CAPRI	RUSSELL	HANNAH CAPRI	HAPPY VALLEY-GOOSE BAY
BARNES	AIDEN CORY NEILSON	BARNES-PATEY	AIDEN CORY NEILSON	PASADENA
BUTT	BRAXON	PIERCEY	BRAXON	MARYSTOWN
CRAIG	JACOB GAVIN LEONARD	CHAFE	JACOB GAVIN LEONARD	ST. JOHN'S
CROFT	MONICA PATRICIA	CROFT	MONA PATRICIA	RENEWS
DAY	RONALD JOSEPH	O'DEA	RONALD JOSEPH	GRAND FALLS-WINDSOR
FENG	MINHUI	FENG	ANYA	ST. JOHN'S
FOX	HOLLY ISABEL CARROLL	FOX	HOLLAND LEIGH CARROLL	ST. JOHN'S
HAYES	MADISON KIMBERLY LYNN	HAYES-HINKS	MADISON KIMBERLY LYNN	CORNER BROOK
HILL	ELLA GRACE CLAUDINE	NORTHCOTTE	ELLA GRACE CLAUDINE	HERMITAGE
KEAN	OWEN DANIEL	STAGG	OWEN DANIEL	GANDER
KING	JAYME ASHLEY	MUISE	JAYME ASHLEY	FLATROCK
LEWIS	QUINN MURPHY	MURPHY	QUINN LEWIS	ST. JOHN'S
MATIONG	AMIRA CLAIRE BELOCURA	MATIONG	AMIRA CLAIRE	ST. JOHN'S
PATEY	SCARLETT KELLY NADINE	BARNES-PATEY	SCARLETT KELLY NADINE	PASADENA
SIDEL-FORD	JAMES WILLIAM	SIDEL	JAIMEE OSMOND	CONCEPTION BAY SOUTH

Legal Name Change Report for September 2025
Dated this 30th day of October, 2025

GOVERNMENT MODERNIZATION & SERVICE DELIVERY
Sheena Gough, Registrar of Vital Statistics

Nov. 7

MINERAL ACT**NOTICE**

Published in accordance with section 62 of CNLR 1143/96 under the *Mineral Act*, cM-12, RSNL 1990 as amended.

Mineral rights to the following mineral Licenses have reverted to the Crown:

Mineral Licence 033295M
held by Marvel Discovery Corporation
on map sheet 12B/08, 12B/09

Mineral Licence 037668M
held by Quesnel, Richard
on map sheet 12B/09

A portion of licence 037842M
held by Quesnel, Richard
on map sheet 12B/09

Mineral Licence 023302M
held by Playfair Mining Ltd.
on map sheet 11P/11

Mineral Licence 008139M
held by Thomas Resources Inc.
on map sheet 12A/13

Mineral Licence 026951M
held by Noel, Nathaniel
on map sheet 02E/13

Mineral Licence 024773M
held by Clode Sound Resources Inc
on map sheet 01M/10

Mineral Licence 011542M
held by Labrador Iron Mines Limited
on map sheet 23J/14

Mineral Licence 011543M
held by Labrador Iron Mines Limited
on map sheet 23J/14

Mineral Licence 027118M
held by White, Jason
on map sheet 01N/12

Mineral Licence 024083M
held by B&A Minerals Ltd.
on map sheet 13A/08

Mineral Licence 017173M
held by Mercer, Judy
on map sheet 12A/16

Mineral Licence 018230M
held by Labrador Iron Mines Limited
on map sheet 23J/15, 23J/14

Mineral Licence 018283M
held by Labrador Iron Mines Limited
on map sheet 23J/14

A portion of licence 019127M
held by Burton, Noelle
on map sheet 02E/13
more particularly described in
an application on file at Dept. of
Natural Resources

Mineral Licence 021253M
held by Burton, Jason
on map sheet 02E/13

A portion of licence 023019M
held by White, Jason
on map sheet 01N/05
more particularly described in
an application on file at Dept.
of Natural Resources

Mineral Licence 035656M
held by Altius Resources Inc.
on map sheet 13D/06

Mineral Licence 035657M
held by Altius Resources Inc.
on map sheet 13D/06

Mineral Licence 035658M
held by Altius Resources Inc.
on map sheet 13D/06

Mineral Licence 035659M
held by Altius Resources Inc.
on map sheet 13D/06

Mineral Licence 035660M
held by Altius Resources Inc.
on map sheet 13D/06

Mineral Licence 026971M
held by Burt, Everett
on map sheet 02E/07

Mineral Licence 026023M
held by CBLT Inc.
on map sheet 12A/09

Mineral Licence 023226M
held by District Copper Corporation
on map sheet 02D/14, 02D/13

A portion of licence held by on map sheet	037961M Puddle Pond Resources Inc. 12A/09 more particularly described in an application on file at Dept. of Natural Resources	Mineral Licence held by on map sheet	025150M Canterra Minerals Corporation 12A/16
Mineral Licence held by on map sheet	023518M Chain Rock Exploration Ltd. 12A/10	A portion of licence held by on map sheet	034612M Ryan, Shawn 23J/06 more particularly described in an application on file at Dept. of Natural Resources
Mineral Licence held by on map sheet	032381M Jones, Brian 12A/09	A portion of licence held by on map sheet	034608M Ryan, Shawn more particularly described in an application on file at Dept. of Natural Resources
Mineral Licence held by on map sheet	032383M Jones, Brian 12A/09	Mineral Licence held by on map sheet	025259M Quadro Resources Ltd. 12A/06
Mineral Licence held by on map sheet	023907M Martin, Cameron 13B/11	Mineral Licence held by on map sheet	025283M Pynn, William 02E/04
Mineral Licence held by on map sheet	023926M Iron Bird Explorations LTD 03E/05	Mineral Licence held by on map sheet	025594M Keats, Wesley 02E/01
Mineral Licence held by on map sheet	024382M Canterra Minerals Corporation 12A/07, 12A/10	A portion of licence held by on map sheet	025760M Ryan, Shawn 23J/11 more particularly described in an application on file at Dept. of Natural Resources
A portion of licence held by on map sheet	024873M Quest Inc. 12A/05, 12A/06 more particularly described in an application on file at Dept. of Natural Resources	Mineral Licence held by on map sheet	025762M Ryan, Shawn 23J/11
Mineral Licence held by on map sheet	024912M Maximos Metals Corp. 14D/05, 14D/06	A portion of licence held by on map sheet	025835M Quinlan, Eddie 12A/06 more particularly described in an application on file at Dept. of Natural Resources
Mineral Licence held by on map sheet	024979M Lyll, Jeffrey 13H/10	Mineral Licence held by on map sheet	025856M Cape Ray Mining Limited 11O/11
Mineral Licence held by on map sheet	025015M Quinlan, Eddie 02E/02	Mineral Licence held by on map sheet	025857M Cape Ray Mining Limited 11O/11
Mineral Licence held by on map sheet	025046M Gardner, Art 02M/12		
Mineral Licence held by on map sheet	025099M Canstar Resources Inc. 01M/13		

Mineral Licence held by on map sheet	025858M Cape Ray Mining Limited 11O/11	Mineral Licence held by on map sheet	035528M Sheppard, Stephen 01N/06
Mineral Licence held by on map sheet	025911M Marvel Discovery Corporation 12A/06	Mineral Licence held by on map sheet	026948M Russell, Gerald Terrance 02E/06
Mineral Licence held by on map sheet	025964M Burin Gold Corp. 01M/16, 01M/09	Mineral Licence held by on map sheet	039281M Puddle Pond Resources Inc. 01L/13
Mineral Licence held by on map sheet	025965M Burin Gold Corp. 01M/10, 01M/16, 01M/09	Mineral Licence held by on map sheet	027003M Marvel Discovery Corporation 12A/06
Mineral Licence held by on map sheet	026002M Burin Gold Corp. 01M/10, 01M/09	Mineral Licence held by on map sheet	027006M Marvel Discovery Corporation 12A/06
Mineral Licence held by on map sheet	026081M Newfoundland Discovery Corp. 02D/11	Mineral Licence held by on map sheet	039293M Freeport Resources Inc. 14M/12
Mineral Licence held by on map sheet	026300M New Rock Mining Inc. 02D/13	Mineral Licence held by on map sheet	011492M Freeport Resources Inc. 14M/12
A portion of licence held by on map sheet	039213M Quinlan, Eddie 02D/12 more particularly described in an application on file at Dept. of Natural Resources	A portion of licence held by on map sheet	014541M Freeport Resources Inc. 14M/12 more particularly described in an application on file at Dept. of Natural Resources
A portion of licence held by on map sheet	026488M Puddle Pond Resources Inc. 12A/10, 12A/11 more particularly described in an application on file at Dept. of Natural Resources	Mineral Licence held by on map sheet	023302M Playfair Mining Ltd. 11P/11
Mineral Licence held by on map sheet	026662M Unity Resources Inc. 01M/13, 01M/14	Mineral Licence held by on map sheet	008139M Thomas Resources Inc. 12A/13
A portion of licence held by on map sheet	026674M Puddle Pond Resources Inc. 02D/09 more particularly described in an application on file at Dept. of Natural Resources	Mineral Licence held by on map sheet	026951M Noel, Nathaniel 02E/13
Mineral Licence held by on map sheet	026884M Maximos Metals Corp. 13N/05	Mineral Licence held by on map sheet	024773M Clode Sound Resources Inc 01M/10
		Mineral Licence held by on map sheet	011542M Labrador Iron Mines Limited 23J/14
		Mineral Licence held by on map sheet	011543M Labrador Iron Mines Limited 23J/14

Mineral Licence held by on map sheet	027118M White, Jason 01N/12	Mineral Licence held by on map sheet	026971M Burt, Everett 02E/07
Mineral Licence held by on map sheet	024083M B&A Minerals Ltd. 13A/08	Mineral Licence held by on map sheet	026023M CBLT Inc. 12A/09
Mineral Licence held by on map sheet	017173M Mercer, Judy 12A/16	Mineral Licence held by on map sheet	023226M District Copper Corporation 02D/14, 02D/13
Mineral Licence held by on map sheet	018230M Labrador Iron Mines Limited 23J/15, 23J/14	A portion of licence held by on map sheet	037961M Puddle Pond Resources Inc. 12A/09 more particularly described in an application on file at Dept. of Natural Resources
Mineral Licence held by on map sheet	018283M Labrador Iron Mines Limited 23J/14	Mineral Licence held by on map sheet	023518M Chain Rock Exploration Ltd. 12A/10
A portion of licence held by on map sheet	019127M Burton, Noelle 02E/13 more particularly described in an application on file at Dept. of Natural Resources	Mineral Licence held by on map sheet	032381M Jones, Brian 12A/09
Mineral Licence held by on map sheet	021253M Burton, Jason 02E/13	Mineral Licence held by on map sheet	032383M Jones, Brian 12A/09
A portion of licence held by on map sheet	023019M White, Jason 01N/05 more particularly described in an application on file at Dept. of Natural Resources	Mineral Licence held by on map sheet	023907M Martin, Cameron 13B/11
Mineral Licence held by on map sheet	035656M Altius Resources Inc. 13D/06	Mineral Licence held by on map sheet	023926M Iron Bird Explorations LTD 03E/05
Mineral Licence held by on map sheet	035657M Altius Resources Inc. 13D/06	Mineral Licence held by on map sheet	024382M Canterra Minerals Corporation 12A/07, 12A/10
Mineral Licence held by on map sheet	035658M Altius Resources Inc. 13D/06	A portion of licence held by on map sheet	024873M Quest Inc. 12A/05, 12A/06 more particularly described in an application on file at Dept. of Natural Resources
Mineral Licence held by on map sheet	035659M Altius Resources Inc. 13D/06	Mineral Licence held by on map sheet	024912M Maximos Metals Corp. 14D/05, 14D/06
Mineral Licence held by on map sheet	035660M Altius Resources Inc. 13D/06	Mineral Licence held by on map sheet	024979M Lyall, Jeffrey 13H/10

Mineral Licence held by on map sheet	025015M Quinlan, Eddie 02E/02	Mineral Licence held by on map sheet	027047M Martin, Cameron 13B/11
Mineral Licence held by on map sheet	025046M Gardner, Art 02M/12	Mineral Licence held by on map sheet	027048M Noel, Nathaniel 12H/11
Mineral Licence held by on map sheet	025099M Canstar Resources Inc. 01M/13	Mineral Licence held by on map sheet	027057M Quadro Resources Ltd. 12A/06
Mineral Licence held by on map sheet	025150M Canterra Minerals Corporation 12A/16	Mineral Licence held by on map sheet	030827M Golden Planet Mining Corp. 02E/13
A portion of licence held by on map sheet	034612M Ryan, Shawn 23J/06 more particularly described in an application on file at Dept. of Natural Resources	Mineral Licence held by on map sheet	030858M Sweetapple, Walter 02C/04
A portion of licence held by on map sheet	034608M Ryan, Shawn more particularly described in an application on file at Dept. of Natural Resources	Mineral Licence held by on map sheet	027102M New Rock Mining Inc. 02D/13
Mineral Licence held by on map sheet	025259M Quadro Resources Ltd. 12A/06	Mineral Licence held by on map sheet	037944M White Fox Silver Resources Inc. 01N/07
Mineral Licence held by on map sheet	025283M Pynn, William 02E/04	Mineral Licence held by on map sheet	034769M Zonte Metals Inc. 02E/08, 02E/07
Mineral Licence held by on map sheet	025594M Keats, Wesley 02E/01	Mineral Licence held by on map sheet	027115M Puddle Pond Resources Inc. 02D/12
Mineral Licence held by on map sheet	027007M Marvel Discovery Corporation 12A/06	Mineral Licence held by on map sheet	038079M Rogers, Nancy 02D/10
Mineral Licence held by on map sheet	036827M Simms, Herb 01N/06	Mineral Licence held by on map sheet	039124M Exploits Discovery Corp. 02E/07
Mineral Licence held by on map sheet	027032M Staress, Robert T. 12A/06	Mineral Licence held by on map sheet	039126M Exploits Discovery Corp. 02E/08, 02E/07
Mineral Licence held by on map sheet	027045M Martin, Cameron 13B/05, 13B/12	Mineral Licence held by on map sheet	039121M Exploits Discovery Corp. 02E/07
		Mineral Licence held by on map sheet	039122M Exploits Discovery Corp. 02E/07

Mineral Licence 030938M
held by Exploits Discovery Corp.
on map sheet 02E/07

Mineral Licence 030946M
held by Pearce, Stuart
on map sheet 12G/01

Mineral Licence 030955M
held by Infinico Metals Corp.
on map sheet 01M/16

Mineral Licence 030978M
held by Dimmell, Peter
on map sheet 01M/09

Mineral Licence 038423M
held by Edge Exploration
on map sheet 01M/08, 01M/09

Mineral Licence 030990M
held by Newfoundland Discovery Corp.
on map sheet 02E/08

DEPARTMENT OF ENERGY AND MINES
Trina Adams, Mineral Claims Recorder

Nov. 7

URBAN AND RURAL PLANNING ACT, 2000

NOTICE OF REGISTRATION MUNICIPAL PLAN AND DEVELOPMENT REGULATION AMENDMENT NO. 24-04

TAKE NOTICE that the CITY OF CORNER BROOK MUNICIPAL PLAN AMENDMENT NO. 24-04 AND DEVELOPMENT REGULATIONS NO. 24-04, adopted on the 23rd day of June 2025, and approved on the 8th day of September 2025 have been registered by the Minister of Municipal and Provincial Affairs, and published in *The Newfoundland and Labrador Gazette* November 7th, 2025.

THE PURPOSE of this map amendment is to permit the expansion of the parking lot associated with the place of worship use located at 11 O'Connell Drive. The Subject Property was split zoned 'Residential Low Density' (RLD) and 'Community Services' (CS), this map amendment was completed to zone the whole property to the Community Service (CS) Zone.

THE CITY CORNER BROOK AMENDMENT NO. 24-04 come into effect the day this notice is published in *The Newfoundland and Labrador Gazette*.

Anyone wishing to inspect a copy of the CORNER BROOK MUNICIPAL PLAN AMENDMENT NO. 24-04 AND DEVELOPMENT REGULATIONS AMENDMENT NO. 24-04 may do so at City Hall, Corner Brook during normal business hours.

CITY OF CORNER BROOK
Jessica Smith, City Clerk

Nov. 7

LANDS ACT

NOTICE OF INTENT, SECTION 7 LANDS ACT, SNL1991 c36 AS AMENDED

NOTICE IS HEREBY given that an application has been made to the Department of Forestry, Agriculture and Lands Branch, to acquire title, pursuant to section 7(2) (d) of the said Act, to that piece of Crown lands situated within 15 metres of the waters of Bottom Cove/Happy Adventure, for the purpose of a boathouse/wharf/slipway.

The application may intrude on the 15 metre shoreline of the above mentioned water body(s) in various locations. For a detailed map, please see website: <https://www.gov.nl.ca/ffa/lands/sec7notifications/>.

Please note: It may take up to five (5) days from the date of application for details to appear on the website.

Any person wishing to object to the application must file the objection in writing with reasons, within 30 days from the publication of notice on the Department of Fisheries, Forestry and Agriculture website, Crown Lands, <https://www.gov.nl.ca/ffa/lands/>, to the Minister of Department of Fisheries, Forestry and Agriculture by mail or email to the nearest Regional Lands Office:

- Eastern Regional Lands Office, P.O. Box 8700, Howley Building, Higgins Line, St. John's, NL, A1B 4J6
Email: easternlandsoffice@gov.nl.ca
- Central Regional Lands Office, P.O. Box 2222, Gander, NL, A1V 2N9
Email: centrallandsoffice@gov.nl.ca
- Western Regional Lands Office, P.O. Box 2006, Sir Richard Squires Building, Corner Brook, NL, A2H 6J8
Email: westernregionlands@gov.nl.ca
- Labrador Regional Lands Office, P.O. Box 3014, Station "B", Happy Valley-Goose Bay, NL, A0P 1E0
Email: labradorlandsoffice@gov.nl.ca

(DISCLAIMER: *The Newfoundland and Labrador Gazette* publishes a NOTICE OF INTENT as received from the Applicant and takes no responsibility for errors or omissions in the property being more particularly described.)

Nov. 7

**NOTICE OF INTENT, SECTION 7
LANDS ACT, SNL1991 c36 AS AMENDED**

NOTICE IS HEREBY given that an application has been made to the Department of Forestry, Agriculture and Lands Branch, to acquire title, pursuant to section 7(2) (a) of the said Act, to that piece of Crown lands situated within 15 metres of the waters of Shabogamo Lake, for the purpose of an access road.

The application may intrude on the 15 metre shoreline of the above mentioned water body(s) in various locations. For a detailed map, please see website: <https://www.gov.nl.ca/ffa/lands/sec7notifications/>.

Please note: It may take up to five (5) days from the date of application for details to appear on the website.

Any person wishing to object to the application must file the objection in writing with reasons, within 30 days from the publication of notice on the Department of Fisheries, Forestry and Agriculture website, Crown Lands, <https://www.gov.nl.ca/ffa/lands/>, to the Minister of Department of Fisheries, Forestry and Agriculture by mail or email to the nearest Regional Lands Office:

- Eastern Regional Lands Office, P.O. Box 8700, Howley Building, Higgins Line, St. John's, NL, A1B 4J6 Email: easternlandsoffice@gov.nl.ca
- Central Regional Lands Office, P.O. Box 2222, Gander, NL, A1V 2N9 Email: centrallandsoffice@gov.nl.ca
- Western Regional Lands Office, P.O. Box 2006, Sir Richard Squires Building, Corner Brook, NL, A2H 6J8 Email: westernregionlands@gov.nl.ca
- Labrador Regional Lands Office, P.O. Box 3014, Station "B", Happy Valley-Goose Bay, NL, A0P 1E0 Email: labradorlandsoffice@gov.nl.ca

(DISCLAIMER: *The Newfoundland and Labrador Gazette* publishes a NOTICE OF INTENT as received from the Applicant and takes no responsibility for errors or omissions in the property being more particularly described.)

Nov. 7

**NOTICE OF INTENT, SECTION 7
LANDS ACT, SNL1991 c36 AS AMENDED**

NOTICE IS HEREBY given that an application has been made to the Department of Forestry, Agriculture and Lands Branch, to acquire title, pursuant to section 7(2) (a) of the said Act, to that piece of Crown lands situated within 15 metres of the waters of St. Mary's Bay/Area between Branch and St. Brides, for the purpose of construction of boardwalk to highlight bog ecology.

The application may intrude on the 15 metre shoreline of the above mentioned water body(s) in various locations. For a detailed map, please see website: <https://www.gov.nl.ca/ffa/lands/sec7notifications/>.

Please note: It may take up to five (5) days from the date of application for details to appear on the website.

Any person wishing to object to the application must file the objection in writing with reasons, within 30 days from the publication of notice on the Department of Fisheries, Forestry and Agriculture website, Crown Lands, <https://www.gov.nl.ca/ffa/lands/>, to the Minister of Department of Fisheries, Forestry and Agriculture by mail or email to the nearest Regional Lands Office:

- Eastern Regional Lands Office, P.O. Box 8700, Howley Building, Higgins Line, St. John's, NL, A1B 4J6 Email: easternlandsoffice@gov.nl.ca
- Central Regional Lands Office, P.O. Box 2222, Gander, NL, A1V 2N9 Email: centrallandsoffice@gov.nl.ca
- Western Regional Lands Office, P.O. Box 2006, Sir Richard Squires Building, Corner Brook, NL, A2H 6J8 Email: westernregionlands@gov.nl.ca
- Labrador Regional Lands Office, P.O. Box 3014, Station "B", Happy Valley-Goose Bay, NL, A0P 1E0 Email: labradorlandsoffice@gov.nl.ca

(DISCLAIMER: *The Newfoundland and Labrador Gazette* publishes a NOTICE OF INTENT as received from the Applicant and takes no responsibility for errors or omissions in the property being more particularly described.)

Nov. 7

QUIETING OF TITLES ACT**2021 01 G 5724
IN THE SUPREME COURT OF
NEWFOUNDLAND AND LABRADOR
GENERAL DIVISION**

NOTICE OF APPLICATION under the Quieting of Titles Act, RSNL 1990, cQ-3.

NOTICE IS HEREBY GIVEN to all parties that VICTOR KAROL JAREMKO and ELLEN ELIZABETH JAREMKO, both of the Town of Conception Bay South, in the Province of Newfoundland and Labrador, have applied to the Supreme Court of Newfoundland and Labrador, General Division, St. John's to have title to all that piece or parcel of land situate and being at 37-41 Brinson's Hill, in the Town of Winterton, in the Province of Newfoundland and Labrador, and being more particularly described in Schedule "A" hereto annexed and shown in Schedule "B" hereto annexed.

ALL BEARINGS aforementioned, for which VICTOR KAROL JAREMKO and ELLEN ELIZABETH JAREMKO claim to be the owners investigated for a declaration that they are the absolute owners in fee simple in possession and said VICTOR KAROL JAREMKO and ELLEN ELIZABETH JAREMKO and the said Applicants have been ordered to publish notice of the application as required by the above named Act.

ALL PERSONS having title adverse to the said title claimed by the said Applicants shall file at the Registry of the Supreme Court of Newfoundland and Labrador, General Division, St. John's particulars of such adverse claim, and serve the same together with an Affidavit verifying the same, on the Applicants on or before the 10th day of December 2025 after which date no party having any claim shall be permitted to file the same or be heard except by special leave of the Court and subject to such conditions as the Court may deem just.

ALL SUCH adverse claims shall be investigated in such a manner as the Supreme Court of Newfoundland and Labrador, St. John's, may direct.

DATED AT Conception Bay South, in the Province of Newfoundland and Labrador, this 31st day of October 2025.

VICTOR KAROL JAREMKO
ELLEN ELIZABETH JAREMKO
THE APPLICANTS

ADDRESS FOR SERVICE:

62 Sweetenwater Ave
Conception Bay South, NL
A1W-5J2

Tel: (709) 834-4748

Tel: (709) 689-5354

SCHEDULE "A"

ALL that lot, piece or parcel of land situated and being at the Town of Winterton, abutted and bounded as follows, that is to say:

BEGINNING at a survey marker in the northwestern limits of Brinson's Hill, variable width, the said point being the southeastern most corner of the within described lot with Modified Transverse Mercator Grid Projection Coordinates of North 5,313,156.838 metres and East 280,513.232 metres;

THENCE running by the northwestern limits of aforesaid Brinson's Hill, variable width south sixty nine degrees zero six minutes fourteen seconds west [S69°06'14"W] a distance of forty one decimal one six three [41.163] metres to a survey marker;

THENCE running by land of Clarence & Thelma Brown north twenty one degrees thirty nine minutes twenty six seconds west [N21°39'26"W] a distance of ten decimal nine two five [10.925] metres to a survey marker;

THENCE running by land of Clarence & Thelma Brown north fifty six degrees forty six minutes thirty four seconds east [N56°46'34"E] a distance of twenty two decimal seven seven zero [22.770] metres to a survey marker;

THENCE running by land of Clarence & Thelma Brown north eight degrees zero zero minutes zero four seconds east [N8°00'04"E] a distance of fourteen decimal three one one [14.311] metres to a survey marker;

THENCE running by Crown Land south eighty four degrees forty six minutes eighteen seconds east [S84°46'18"E] a distance of seventeen decimal eight nine eight [17.898] metres to a survey marker;

THENCE running by Crown Land south ten degrees zero one minutes fifty seconds east [S10°01'50"E] a distance of twenty decimal eight zero seven [20.807] metres to a survey marker, more or less to the point or place of beginning and being more particularly shown and delineated on the attached plan.

THE ABOVE described lot piece or parcel of land containing an area of eight hundred decimal four [800.4] square metres, more or less.

Zone 1, as per the NAD83 datum for the Province of Newfoundland & Labrador.

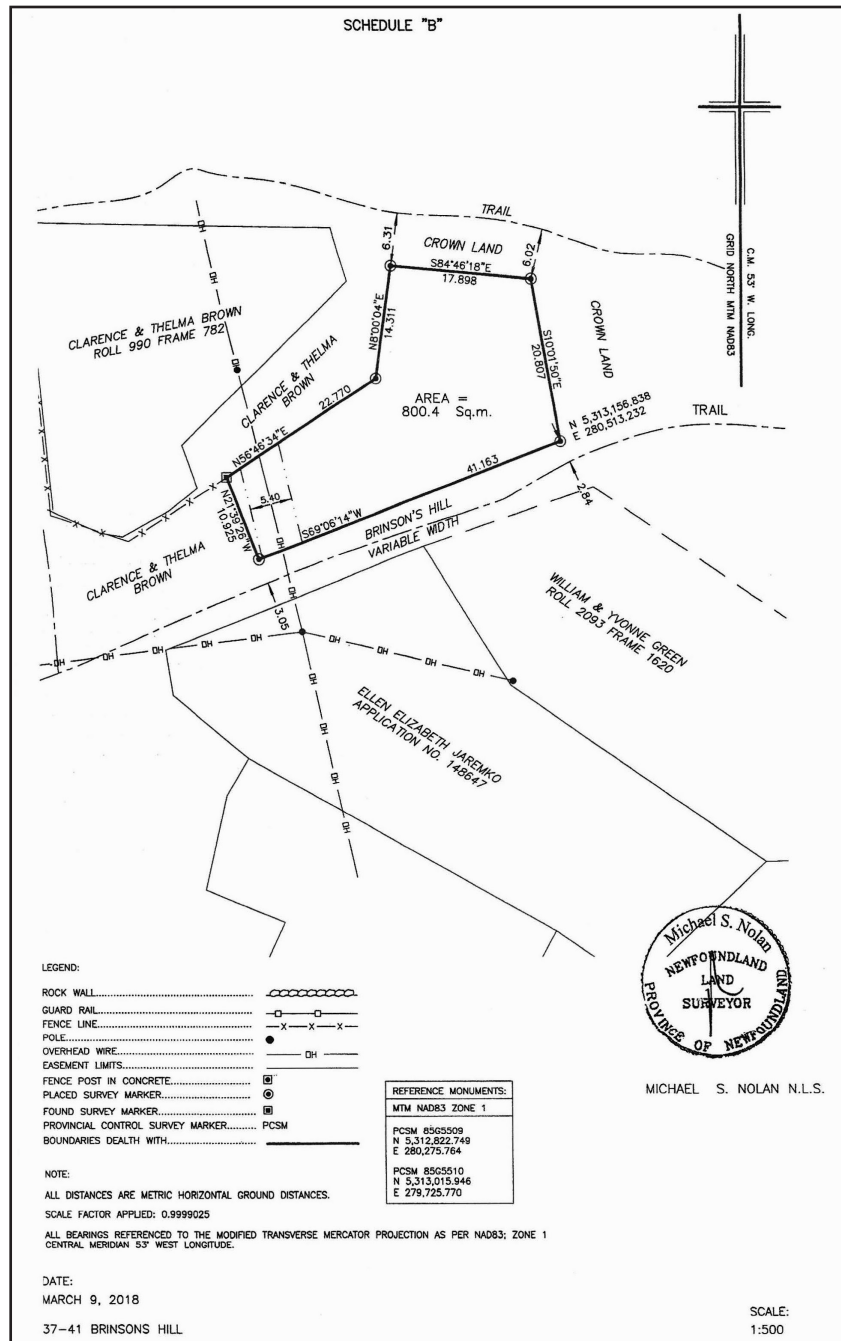
March 9, 2018

CIVIC 37-41 BRINSONS HILL

THE ABOVE described lot piece or parcel of land being subject to that portion of a pole line easement five decimal four zero [5.40] metres wide, extending through the said land.

MICHAEL S. NOLAN
Newfoundland Land Surveyor

ALL BEARINGS being referred to the meridian of fifty-three degrees west longitude of the three degree modified transverse mercator projection,



TRUSTEE ACT**PUBLIC NOTICE OF ESTATE BAILMENT
AND REVESTMENT**

By STEWART GEORGE EDDY (Deceased) and
MELVINA LEONIE EDDY
PO Box 13107, Clarenville, NL, A5A 4R2

WE, STEWART GEORGE EDDY (now deceased) and MELVINA LEONIE EDDY, as Bailors and Settlers, hereby publish formal notice that the personal, proprietary, special, and specific information relating to the estate and identity of our child, MICHAEL STEWART EDDY, was originally deposited in infancy by way of a banking-style bailment of trust chattels. Said property was deposited upon a depositary deposit slip into the custody of institutional bailees for the exclusive benefit and protection of the child.

THIS property includes personal information, identifying particulars, estate indicia, health records, financial and statutory accounts, and other chattels of the child's identity, held strictly in a custodial capacity. It was never abandoned, gifted, nor granted in general agency. The deposit was executed for the preservation and later redelivery of the child's interest upon reaching the age of majority. The Bailors exercised lawful guardianship over the estate during infancy, and such deposit formed a continuing specific bailment subject to redelivery.

UPON March 6, 1994, when the child reached the age of majority, all five elements of ownership—namely, the right of possession, the right to use, the right to receive benefits, the right to change, and the right to dispose—vested in MICHAEL STEWART EDDY, who is now affirmed as the final reversioner, remainderman, and true owner of the entirety of the settled estate. The guardian-ward relationship has legally terminated, and the reversion of the bailment settles by operation of law upon the true owner.

ALL institutional bailees of this estate are hereby commanded to perform their fiduciary duty of redelivery, to offset against the instruments of deposit, and to acknowledge that the child, now an adult, holds all rights, titles, and interests, both legal and equitable. The Bailees are reminded that no assumption of agency, ownership, or liability may be presumed to the prejudice of the reversioner.

DELIVERY of the vested estate and return of the proprietary instruments shall be made to:

ALL postal custodians are reminded of their ongoing duties as custodial bailees for all instruments addressed to the reversioner at the above mailing address.

MICHAEL STEWART EDDY

ADDRESS FOR SERVICE

P.O. Box 13107
Clarenville, NL, A5A 4R2

Nov. 7

ESTATE NOTICE

IN THE MATTER OF the Estate of MAUREEN KATHRYN FAHEY, Late of the City of St. John's, in the Province of Newfoundland and Labrador, Deceased.

ALL PERSONS claiming to be creditors of, or who have any claims or demands either as beneficiaries or next-of-kin (by blood, legal adoption or marriage) upon or affecting, the Estate of MAUREEN KATHRYN FAHEY, Gentlewoman, who died at the City of St. John's, NL on or about the 26th day of April, 2025 are hereby requested to send particulars thereof in writing, duly attested, to: William J. O'Keefe & Michael Doyle, c/o William O'Keefe Law, 1973 Topsail Road, Paradise, NL A1L 1Z4.

Particulars will be received by William J. O'Keefe & Michael Doyle, as Executors of the Estate and Effects of MAUREEN KATHRYN FAHEY, on or before December 1, 2025, after which date, the said Executors will proceed to distribute the Estate having regard only to the claims of which they then shall have had notice.

DATED at the Town of Paradise, in the Province of Newfoundland and Labrador, this 31st day of October, 2025.

WILLIAM J. O'KEEFE & MICHAEL DOYLE
Executors of the Estate of
MAUREEN KATHRYN FAHEY

ADDRESS FOR SERVICE:

c/o William O'Keefe Law
1973 Topsail Road
Paradise, NL A1L 1Z4
Tel: (709) 782-6400
Email: iquilty@williamokeefelaw.ca

Nov. 7

ESTATE NOTICE

IN THE MATTER OF the Estate and Effects of late ROSALIND EILEEN NICHOL, of Lewisporte, in the Province of Newfoundland & Labrador, Retired Person, Deceased.

ALL PERSONS claiming to be creditors of or who have any claims or demands upon or affecting the Estate of ROSALIND EILEEN NICHOL, the aforesaid deceased, who died at the Town of Gander, Newfoundland and Labrador, on or about the 13th day of September, 2025, are hereby requested to send particulars thereof in writing, duly attested, to the undersigned Solicitor for the Executors of the Estate on or before the 16th day of November, 2025 after which date the Executors have had notice.

DATED at the Town of Gander, Newfoundland and Labrador, this 28th day of October, 2025.

PEDDLE LAW
Solicitor for the Executors
PER: MICHAEL D. PEDDLE

ADDRESS FOR SERVICE:
P.O. Box 563
137 Bennett Drive
Gander, NL A1V 2E1

Tel: (709) 651-4949
Fax: (709) 651-4951

Nov. 7

ESTATE NOTICE

IN THE MATTER OF the Estate of PATRICK O'CALLAGHAN, late of the City of St. John's, in the Province of Newfoundland and Labrador, Deceased.

ALL PERSONS claiming to be creditors of, or who have any claims or demands either as beneficiaries or next-of-kin (by blood, legal adoption or marriage) upon or affecting, the Estate of PATRICK O'CALLAGHAN, Gentleman, who died at the City of Dublin, Ireland, on or about the 7th day of June, 2025 are hereby requested to send particulars thereof in writing, duly attested, to: William J. O'Keefe, Kristen Penney, and Matthew O'Callaghan, at c/o William O'Keefe Law 1973 Topsail Road, Paradise, NL A1L 1Z4.

Particulars will be received by William J. O'Keefe, Kristen Penney, and Matthew O'Callaghan, as Executors of the Estate and Effects of PATRICK O'CALLAGHAN, on or before December 1, 2025,

after which date, the said Executors will proceed to distribute the Estate having regard only to the claims of which they then shall have had notice.

DATED at the Town of Paradise, in the Province of Newfoundland and Labrador, this 28th day of October, 2025.

WILLIAM J. O'KEEFE, KRISTEN PENNEY,
and MATTHEW O'CALLAGHAN
Executors of the Estate of
PATRICK O'CALLAGHAN

ADDRESS FOR SERVICE:
c/o William O'Keefe Law
1973 Topsail Road,
Paradise, NL A1L 1Z4

Tel: (709) 782-6400
Email: iquilty@williamokeefelaw.ca

Nov. 7

ESTATE NOTICE

IN THE MATTER OF the Estate and Effects of late LOUISE SMALL, of Lewisporte, in the Province of Newfoundland & Labrador, Retired Person, Deceased.

ALL PERSONS claiming to be creditors of or who have any claims or demands upon or affecting the Estate of LOUISE SMALL, the aforesaid deceased, who died at the Town of Lewisporte, Newfoundland and Labrador, on or about the 23rd day of June, 2025, are hereby requested to send particulars thereof in writing, duly attested, to the undersigned Solicitor for the Executrix of the Estate on or before the 16th day of November, 2025 after which date the Executrix have had notice.

DATED at the Town of Gander, Newfoundland and Labrador, this 28th day of October, 2025.

PEDDLE LAW
Solicitor for the Executrix
Per: MICHAEL D. PEDDLE

ADDRESS FOR SERVICE:
P.O. Box 563
137 Bennett Drive
Gander, NL A1V 2E1

Tel: (709) 651-4949
Fax: (709) 651-4951

Nov. 7

ESTATE NOTICE

IN THE MATTER OF the Estate and Effects of late MARJORIE EILEEN VIVIAN of Gander Bay South, in the Province of Newfoundland and Labrador, retired, widowed, Deceased.

ALL PERSONS claiming to be creditors of or who have any claims or demands upon or affecting the Estate of MARJORIE EILEEN VIVIAN, the aforesaid deceased, who died at Gander, in the Province of Newfoundland and Labrador on or about the 31st day of May, 2025, are hereby requested to send particulars thereof in writing, duly attested, to the undersigned Solicitor for the Executor of the Estate on or before the 21st day of November, 2025 after which date the Executor will proceed to distribute the said Estate having regard only to the claims of which they shall then have had notice.

DATED at the Town of Gander, Newfoundland and Labrador, this 27th day of October, 2025.

PEDDLE LAW
Solicitor for the Executor
Per: MICHAEL D. PEDDLE

ADDRESS FOR SERVICE:
P.O. Box 563
137 Bennett Drive
Gander, NL A1V 2E1

Tel: (709) 651-4949
Fax: (709) 651-4951

MICHAEL D. PEDDLE
Solicitor for the Executor
ADDRESS FOR SERVICE:
Peddle Law
P.O. Box 563
13 7 Bennett Drive
Gander, Newfoundland A1V 2E1

Tel: (709) 651-4949
Fax: (709) 651-4951

Nov. 7



The Newfoundland and Labrador Gazette

PART II SUBORDINATE LEGISLATION FILED UNDER THE STATUTES AND SUBORDINATE LEGISLATION ACT

Vol. 100

ST. JOHN'S, FRIDAY, NOVEMBER 7, 2025

No. 45

Index

PART I

Change of Names Act – Notice	651
Mineral Act – Notice	652
Lands Act – Notices.....	657
Quieting of Titles Act – Notice.....	659
Trustee Act – Notices	661
Urban and Rural Planning Act, 2000 – Notice	657

PART II CONTINUING INDEX OF SUBORDINATE LEGISLATION

Title of Act and Subordinate Legislation made thereunder	CNLR or NL Reg.	Amendment	NL Gazette Date & Page No.
--	--------------------	-----------	-------------------------------

**No Subordinate Legislation
Received at Time of Printing**

The Newfoundland and Labrador Gazette is published from the Office of the King's Printer.

Copy for publication must be received by **Friday, 4:30 p.m.**, seven days before publication date to ensure inclusion in next issue.

Advertisements must be submitted in either PDF format or as a MSWord file. When this is not possible, advertisements must be either, typewritten or printed legibly, separate from covering letter. Number of insertions required must be stated and the names of all signing officers typewritten or printed.

Copy may be mailed to the address below, faxed to (709) 729-1900 or emailed to kingsprinter@gov.nl.ca.
Subscription rate for *The Newfoundland and Labrador Gazette* is \$144.38 for 52 weeks plus 15% HST (\$166.04).
Weekly issues, \$3.47 per copy, plus 15% HST (\$3.99) payable in advance.

All cheques, money orders, etc., should be made payable to THE NEWFOUNDLAND EXCHEQUER ACCOUNT and all correspondence should be addressed to: Office of the King's Printer, P. O. Box 8700, Ground Floor, East Block, Confederation Building, St. John's, NL A1B 4J6, Telephone: (709) 729-3649, Fax: (709) 729-1900.

Web Site: www.gov.nl.ca/dgsnl/printer/gazette/weekly-issues/

The Newfoundland and Labrador Gazette

Advertising Rates

Prices effective July 1, 2016

Notices	Rate	15%	HST Total
Lands Act - Notice of Intent - 1 week	\$31.13	\$4.67	\$35.80
Motor Carrier Act - Notice - 1 week	\$39.90	\$5.99	\$45.89
Trustee Act - Estate Notice - 1 week	\$34.65	\$5.20	\$39.85
Trustee Act - Estate Notice - 2 weeks	\$62.37	\$9.36	\$71.73
Trustee Act - Estate Notice - 3 weeks	\$91.25	\$13.69	\$104.94
Trustee Act - Estate Notice - 4 weeks	\$118.97	\$17.85	\$136.82

All other public notices required by law to be published in *The Newfoundland and Labrador Gazette*, eg., Corporations Act, Municipalities Act, Quieting of Titles Act, Urban and Rural Planning Act, etc., are priced according to size: for Single Column \$3.47 per cm or Double Column \$6.93 per cm, plus 15% HST.

For quotes please contact the Office of the King's Printer kingsprinter@gov.nl.ca

Government Information Product
Publication Rate Mail
G.S.T. # R107442683