

Northwest Gander Newfoundland Moose Management Area 24



**NORTHWEST
GANDER
MMA 24**

MOOSE MANAGEMENT AREA 24 NORTHWEST GANDER

All that area of the Island of Newfoundland bounded by a line beginning at the confluence of a small stream with Dowd Pond at said pond's southeastern extremity; then following the eastern, then northeastern shorelines of Dowd Pond in a northwesterly direction to a stream flowing into Little Dowd Pond; then following the southern bank of this stream in a northerly direction to Little Dowd Pond; then following the southern and western shorelines of said pond in a generally northerly direction to its confluence with and unnamed stream; then following this unnamed stream in a northwesterly direction to a small unnamed pond that intersects the Nalcor Energy transmission line; then following said transmission line in a generally easterly by northeasterly direction to its intersection with the T'Railway; then following the T'Railway in a generally easterly direction to the center of the T'Railway bridge crossing the Gander River at Glenwood; then following a line equidistant from the eastern and western banks of the Gander River and the eastern and western shorelines of Gander Lake in a generally southerly direction to UTM coordinates 653604 metres east and 5419692 metres north; then following a straight line in a southerly direction to the confluence of the eastern bank of the Southwest Gander River with Gander Lake; then following the eastern bank of the Southwest Gander River in a southwesterly direction to its confluence with Dennis Brook; then following a straight line in a generally westerly by southwesterly direction to the confluence of the Great Gull River and the Northwest Gander River; then following a straight line in a northeasterly direction to the point of commencement.

1:120,000

Kilometers
0 5 10

NAD1983 Zone 21N



Note: This map has been prepared as a convenient reference only. It is not a legal document. The Wildlife Act and Regulations and the Annual Hunting Orders published therein should be consulted for all purposes of interpreting and applying the law. Contact the Newfoundland & Labrador Wildlife Division.

Created by: Wildlife Division
Department of Fisheries, Forestry & Agriculture
Date: November 2020

PACK IT IN - PACK IT OUT
Garbage and litter on our landscape is becoming a serious problem. The best and only alternative for garbage is a Pack It In, Pack It Out policy. You carried in all those containers, boxes, packages when they were full, it's a lot easier to carry them out when they are empty. Please take your garbage home with you and dispose of it in the proper manner.

Confluence of the Great Gull River
and the Northwest Gander River

Confluence of the Southwest
Gander River and Dennis Brook

Intersection of the Nalcor Energy
Transmission Line and the T'Railway

Intersection of the Gander River and the
center of the T'Railway Bridge at Glenwood

Gander Lake at UTM coordinates
653604 mE and 5419692 mN

Confluence of the eastern
bank of the Southwest Gander
River and Gander Lake

REGIONAL FORESTRY OFFICES
Labrador, Goudie Building, P.O. Box 3014,
Station B, Happy Valley, A0P 1E0,
896-2732
Western, Forestry Building, Massey Dr., P.O.
Box 2006, Corner Brook, A2H 6J8,
637-2370
Eastern, Gander Public Building, Airport Blvd.,
P.O. Box 2222, Gander, A1V 2N9,
256-1450

**National Topographic Series
Reference Index 1:250000**



The following map is
crossed by the outline of
the Northwest Gander Moose
Management Area 24.

National Topographic
Series Map 250,000
Reference List:

002-D

WILDLIFE DIVISION HEADQUARTERS
P.O. Box 2007, 192 Wheelers Road
Corner Brook, NL A2H 7S1
(709) 637-2025

Regional Wildlife Offices
Goose Bay, 896-7930
St. John's, 729-2630

Fish and Wildlife Enforcement
Report Poaching Toll Free 1-877-820-0999
Western Regional Office - 637-2971
Labrador Regional Office - 896-7973
Eastern Regional Office - 729-2192

C

D

E

F

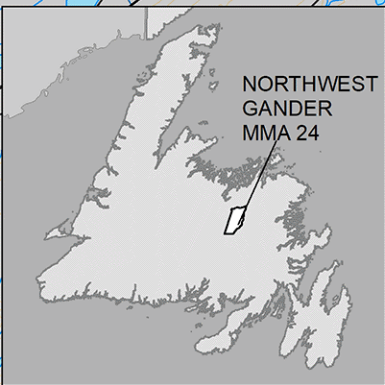
3

4

5

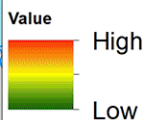
6

MMA 24: Northwest Gander Moose Winter Distribution (Estimated): 2020 Survey

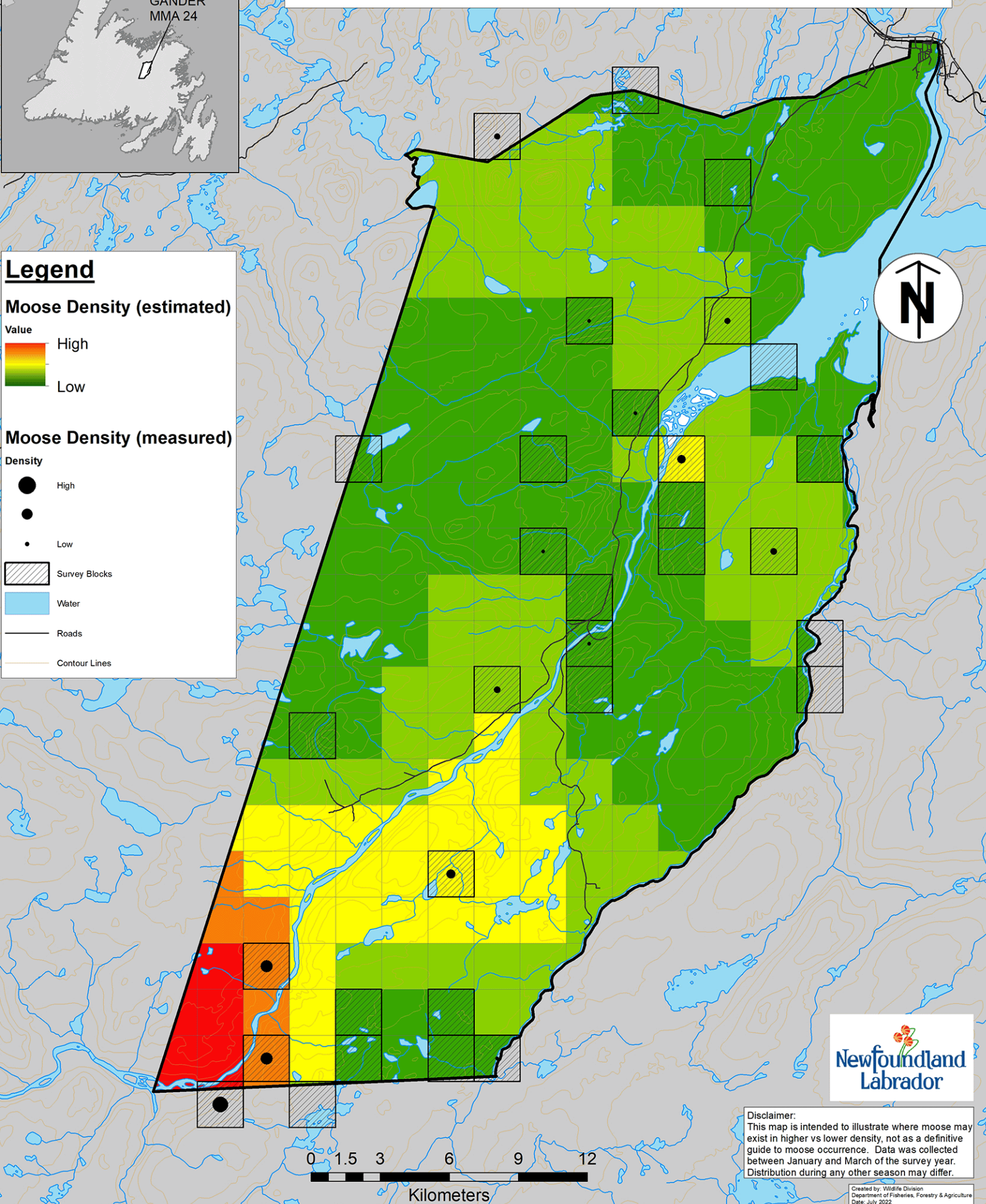
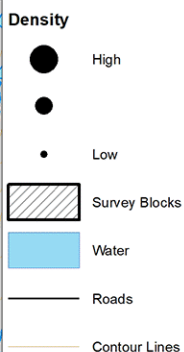


Legend

Moose Density (estimated)



Moose Density (measured)



Newfoundland
Labrador

Disclaimer:
This map is intended to illustrate where moose may exist in higher vs lower density, not as a definitive guide to moose occurrence. Data was collected between January and March of the survey year. Distribution during any other season may differ.

Created by: Wildlife Division
Department of Fisheries, Forestry & Agriculture
Date: July 2022