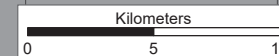


# St. John's Newfoundland Moose Management Area 35



ST. JOHN'S  
MMA 35

1:150,000



NAD1983 Zone 22N

**PACK IT IN - PACK IT OUT**  
Garbage and litter on our landscape is becoming a serious problem. The best and only alternative for garbage is a Pack It In, Pack It Out policy. You carried in all those containers, boxes - packages when they were full; it's a lot easier to carry them out when they are empty. Please take your garbage home with you and dispose of it in the proper manner.

**REGIONAL FORESTRY OFFICES**  
Labrador, Goudie Building, P.O. Box 3014, Station B, Happy Valley, A0P 1E0, 896-2732  
Western, Forestry Building, Massey Dr., P.O. Box 2006, Corner Brook, A2H 6J8, 637-2370  
Eastern, Gander Public Building, Airport Blvd., P.O. Box 2222, Gander, A1V 2N9, 256-1450

**National Topographic Series  
Reference Index 1:250000**



The following map is crossed by the outline of the St. John's Moose Management Area 35.

National Topographic Series Map 250,000 Reference List:

001-N

**MOOSE MANAGEMENT AREA 35  
ST. JOHN'S**

All that area of the Island of Newfoundland bounded by a line beginning at the confluence of North Arm River with North Arm, Holyrood Bay; then following the eastern shoreline of North Arm in a northeasterly direction to Joys Point; then following the western shoreline of South Arm in a southerly direction to Main Beach; then following the eastern shoreline of Holyrood Bay and Conception Bay in a northeasterly direction to Cape St. Francis; then following the shorelines of Pouch Cove, Tor Bay, Logy Bay, St. John's Bay, Motion Bay and the southern shore of the Avalon Peninsula in a generally southerly direction to the northern bank of Perrys Brook and its confluence with Witless Bay; then following the northern bank of Perrys Brook in a northwesterly direction to its intersection with Route 10; then following Route 10 in a generally northeasterly direction to its intersection with Route 13; then following Route 13 in a northwesterly then westerly direction to its intersection with the Trans Canada Highway, TCH, Route 1; then following the TCH in a generally westerly direction to its intersection with the Salmonier Line, Route 90; then following Route 90 in a generally northeasterly direction to the western abutment of the bridge crossing North Arm River; then following the western bank of North Arm River in a northeasterly direction to the point of commencement; excluding all offshore islands.

Note: This map has been prepared as a convenient reference only. It is not a legal document. The Wildlife Act and Regulations and the Annual Hunting Orders published therein should be consulted for all purposes of interpreting and applying the law. Contact the Newfoundland & Labrador Wildlife Division.

Created by: Wildlife Division  
Department of Fisheries, Forestry & Agriculture  
Date: November 2020

**WILDLIFE DIVISION HEADQUARTERS**  
P.O. Box 2007, 192 Wheelers Road  
Corner Brook, NL A2H 7S1  
(709) 637-2025

**Regional Wildlife Offices**  
Goose Bay, 896-7930  
St. John's, 729-2630

**Fish and Wildlife Enforcement**  
Report Poaching Toll Free 1-877-820-0999  
Western Regional Office - 637-2971  
Labrador Regional Office - 896-7973  
Eastern Regional Office - 729-2192

Confluence of North Arm River  
with North Arm, Holyrood Bay

Intersection of Route 90 and  
the western abutment of the  
bridge crossing North Arm River

Intersection of the TCH and  
the Salmonier Line, Route 90

Intersection of Route 13  
and the Trans Canada  
Highway, TCH, Route 1

Intersection of Route 10  
and Route 13

Intersection of Perrys  
Brook and Route 10

Confluence of Perrys  
Brook with Witless Bay

B

C

D

E

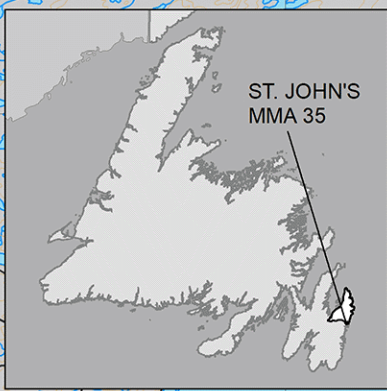
WITLESS BAY

F

8

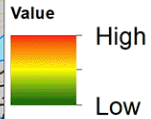


# MMA 35: St. John's Moose Winter Distribution (Estimated): 2018 Survey

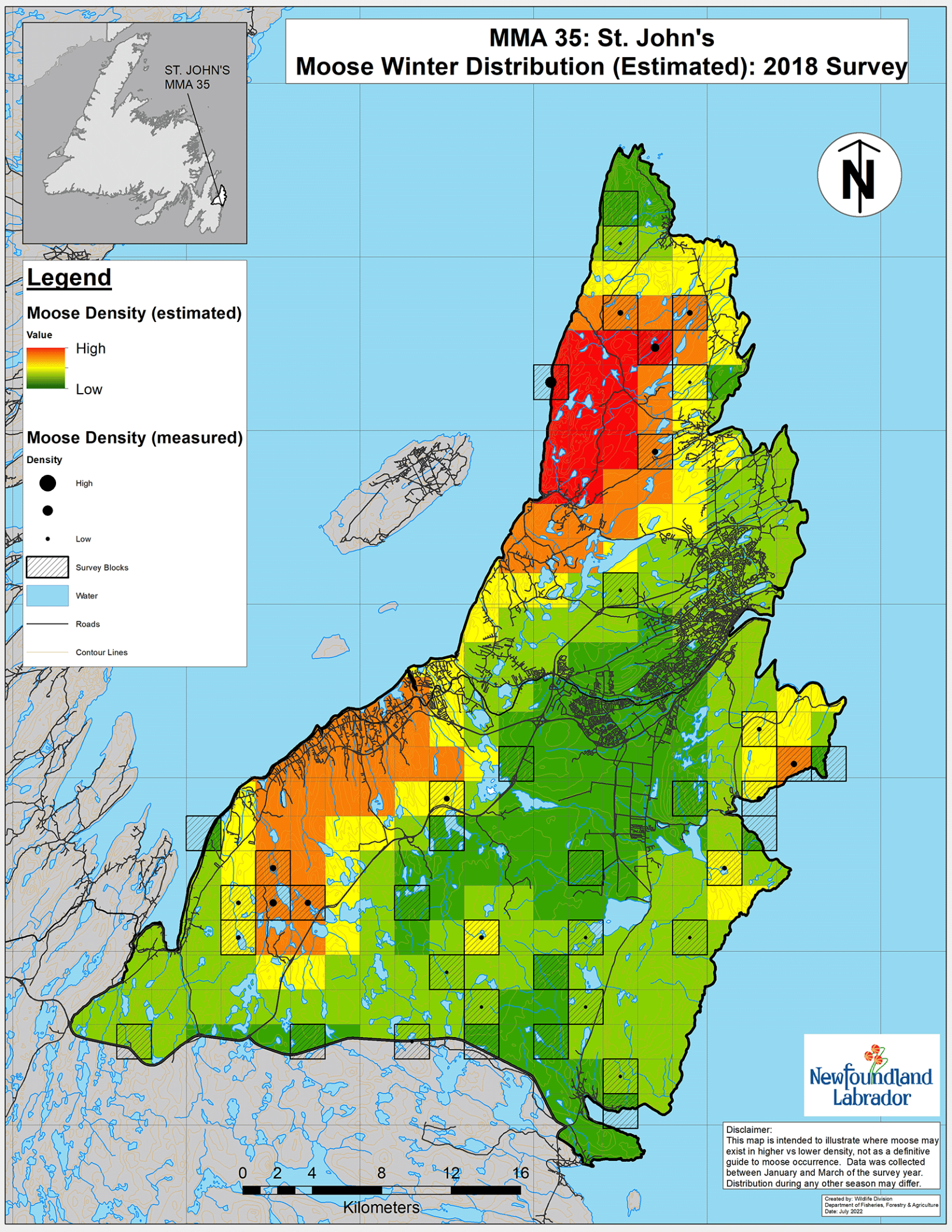
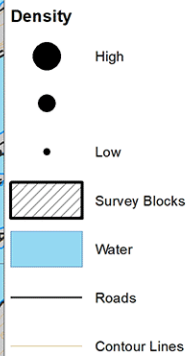


## Legend

### Moose Density (estimated)



### Moose Density (measured)



Disclaimer:  
This map is intended to illustrate where moose may exist in higher vs lower density, not as a definitive guide to moose occurrence. Data was collected between January and March of the survey year. Distribution during any other season may differ.

Created by: Wildlife Division  
Department of Fisheries, Forestry & Agriculture  
Date: July 2022