

# Ten Mile Brook Newfoundland Moose Management Area 45



TEN MILE  
BROOK  
MMA 45

## MOOSE MANAGEMENT AREA 45 TEN MILE BROOK

All that area of the Island of Newfoundland bounded by a line beginning at the northern bank of a stream in the community of Eddies Cove West located at UTM coordinates 487996 metres east and 5622053 metres north; then following the north bank of said stream in a generally northwesterly direction to the coastline of the Great Northern Peninsula in a northeasterly direction to the outflow of Eddies Brook at Eddies Cove; then following the western bank of Eddies Brook to a bridge intersecting the Viking Trail, Route 430 at Eddies Cove given by the coordinates 538272 metres east and 5695888 metres north; then following the Viking Trail, Route 430 in a generally easterly direction to a point where the western bank of Northeast Stream intersects the Viking Trail at UTM coordinates 568541 metres east and 5691775 metres north; then following the western bank of Northeast Stream in generally southerly direction to its outflow at Hare Bay; then following the coastline of Hare Bay in a generally westerly, then southerly direction to a point on the northern bank of West Brook; then following a straight line in a southwesterly direction to its intersection with Belvie Brook at UTM coordinates 553645 metres east and 5669953 metres north; then following the northern then western banks and shorelines of the Belvie Brook system to its intersection with the forest access road at UTM coordinates 546844 metres east and 5666946 metres north; then following this forest access road to its intersection with the main forest access road at UTM coordinates 546704 metres east and 5665347 metres north; then following this main access road in a westerly direction to an intersection east of Muskrat Pond with UTM coordinates 537411 metres east and 5662392 metres north; then following this road to its intersection with a small stream at UTM coordinates 536681 metres east and 5661535 metres north; then following the southern bank of said stream to Muskrat Pond and the southern shoreline of said pond to Muskrat Brook; then following the southern bank of Muskrat Brook to its confluence with Round Lake; then following the southern and western shorelines of Round Lake to the narrows where it enters Ten Mile Lake; then following the southern shoreline of Ten Mile Lake in a southwesterly direction to the northern extremity of Rose's Feeder; then following the eastern bank of Rose's Feeder in a southerly direction to Feeder Pond; then following the eastern shoreline of Feeder Pond to the brook at its southern extremity; then following a straight line in a southwesterly direction to the northern extremity of Castor Tilt Pond; then following the eastern shoreline of Castor Tilt Pond in a southwesterly direction to a brook at its southern extremity known as East Castor Brook; then following East Castor Brook in a southerly direction to East Castor Pond; then following the eastern shoreline of East Castor Pond in a southwesterly direction to its outflow; then following the southern and eastern banks of the main stem of East Castor Brook, then the Middle Gulch Brook North Branch and then Middle Gulch Brook in a southwesterly direction to its confluence with East Castor River; then following the eastern bank of East Castor River in a generally southerly direction to its confluence with Leg Pond; then following the northern shoreline of Leg Pond in a southeasterly direction to a southernmost point where a brook intersects with said pond; then following the eastern bank of the said unnamed brook at the southern extremity of Leg Pond in a southwesterly direction to Loon Pond; then following the eastern shoreline of Loon Pond to the mouth of a brook that flows into Bluey on Big East; then following the eastern bank of this brook to Bluey on Big East; then following the eastern shoreline of said pond to its southeastern extremity at UTM coordinates 512616 metres east and 5627601 metres north; then following a straight line in a southeasterly direction to Rocky Stint Pond on the headwaters of the Soufflets River, at UTM coordinates 518370 metres east and 5596857 metres north; then following a straight line in a northwesterly direction to the point of commencement; excluding all offshore islands.

Note: This map has been prepared as a convenient reference only. It is not a legal document. The Wildlife Act and Regulations and the Annual Hunting Orders published therein should be consulted for all purposes of interpreting and applying the law. Contact the Newfoundland & Labrador Wildlife Division.

Created by: Wildlife Division  
Department of Fisheries, Forestry & Agriculture  
Date: November 2020

**PACK IT IN - PACK IT OUT**  
Garbage and litter on our landscape is becoming a serious problem. The best and only alternative for garbage is a Pack It In, Pack It Out policy. You carried in all those containers, boxes - packages when they were full; it's a lot easier to carry them out when they are empty. Please take your garbage home with you and dispose of it in the proper manner.

1:260,000

Kilometers  
0 5 10

NAD1983 Zone 21N

GULF OF ST. LAWRENCE

Northern bank of a stream in Eddies Cove West at UTM coordinates 487996 mE and 5622053 mN

Loon Pond

Southeastern extremity of Bluey on Big East at UTM coordinates 512616 mE and 5627601 mN

Rocky Stint Pond at UTM coordinates 518370 mE and 5596857 mN

Bridge intersecting the Viking Trail, Route 430 at UTM coordinates 538272 mE and 5695888 mN

Eddies Cove

Intersection of Northeast Stream and the Viking Trail, Route 430

HARE BAY

Point on the northern bank of West Brook

Belvie Brook at UTM coordinates 553645 mE and 5669953 mN

Intersection of Belvie Brook system with the forest access road at UTM coordinates 546844 mE and 5666946 mN

Forest roads intersection at UTM coordinates 546704 mE and 5665347 mN

Forest roads intersection at UTM coordinates 537411 mE and 5662392 mN

Intersection of forest road with a small stream at UTM coordinates 537420 mE and 5662398 mN

Confluence of Muskrat Brook and Round Lake

Northern extremity of Rose's Feeder at Ten Mile Lake

Brook at the southern extremity of Feeder Pond

Castor Tilt Pond

East Castor Pond

Confluence of Middle Gulch Brook with the East Castor River

Confluence of the East Castor River and Leg Pond

Southernmost point of Leg Pond at the inflow of a brook

**WILDLIFE DIVISION HEADQUARTERS**  
P.O. Box 2007, 192 Wheelers Road  
Corner Brook, NL A2H 7S1  
(709) 637-2025

Regional Wildlife Offices  
Goose Bay, 896-7930  
St. John's, 729-2630

Fish and Wildlife Enforcement  
Report Poaching Toll Free 1-877-820-0999  
Western Regional Office - 637-2971  
Labrador Regional Office - 896-7973  
Eastern Regional Office - 729-2192

**REGIONAL FORESTRY OFFICES**  
Labrador, Goudie Building, P.O. Box 3014,  
Station B, Happy Valley, A0P 1E0,  
896-2732  
Western, Forestry Building, Massey Dr., P.O.  
Box 2006, Corner Brook, A2H 6J8,  
637-2370  
Eastern, Gander Public Building, Airport Blvd,  
P.O. Box 2222, Gander, A1V 2N9,  
256-1450

**National Topographic Series  
Reference Index 1:250000**

012P

012I

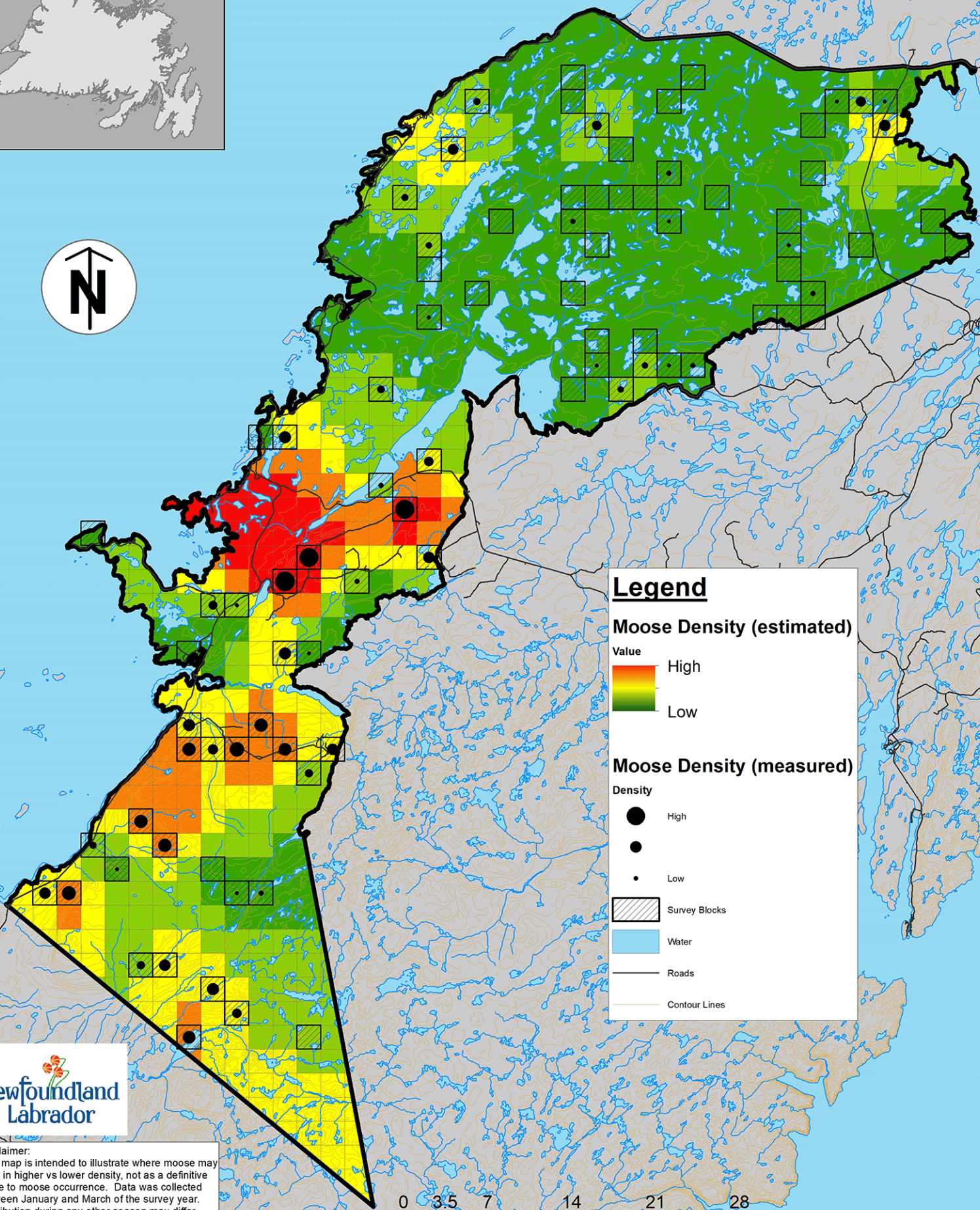
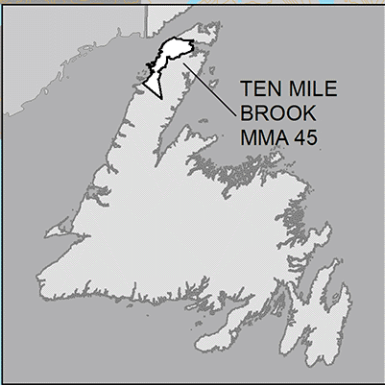
The following maps are crossed by the outline of the Ten Mile Brook Moose Management Area 45.

National Topographic Series Map 250,000 Reference List:

012-I, 012-P



# MMA 45: Ten Mile Brook Moose Winter Distribution (Estimated): 2022 Survey



**Legend**

**Moose Density (estimated)**

Value

High

Low

**Moose Density (measured)**

Density

High

Low

Survey Blocks

Water

Roads

Contour Lines



**Disclaimer:**  
This map is intended to illustrate where moose may exist in higher vs lower density, not as a definitive guide to moose occurrence. Data was collected between January and March of the survey year. Distribution during any other season may differ.

Created by: Wildlife Division  
Department of Fisheries, Forestry & Agriculture  
Date: July 2022

