

Town of **STEADY BROOK**
Municipal Sustainable
Development Plan 2010-2020

Future Land Use Map

- LEGEND**
- Residential
 - Commercial Tourism
 - Commercial Highway
 - Open Space Conservation
 - Open Space Recreation
 - Transportation
 - Designated Floodway
 - Residential - Floodway Fringe
 - Open Space - Floodway Fringe
- Municipal and Planning Area Boundary

Dated at Steady Brook, Newfoundland and Labrador
This 6th day of June, 2010
Donna Thistle
Donna Thistle, Mayor
Robert Gusse
Robert Gusse, Town Clerk/Manager

Municipal Plan/Amendment
REGISTERED
Number 4935-2011-005
Date October 5, 2011
Signature [Signature]

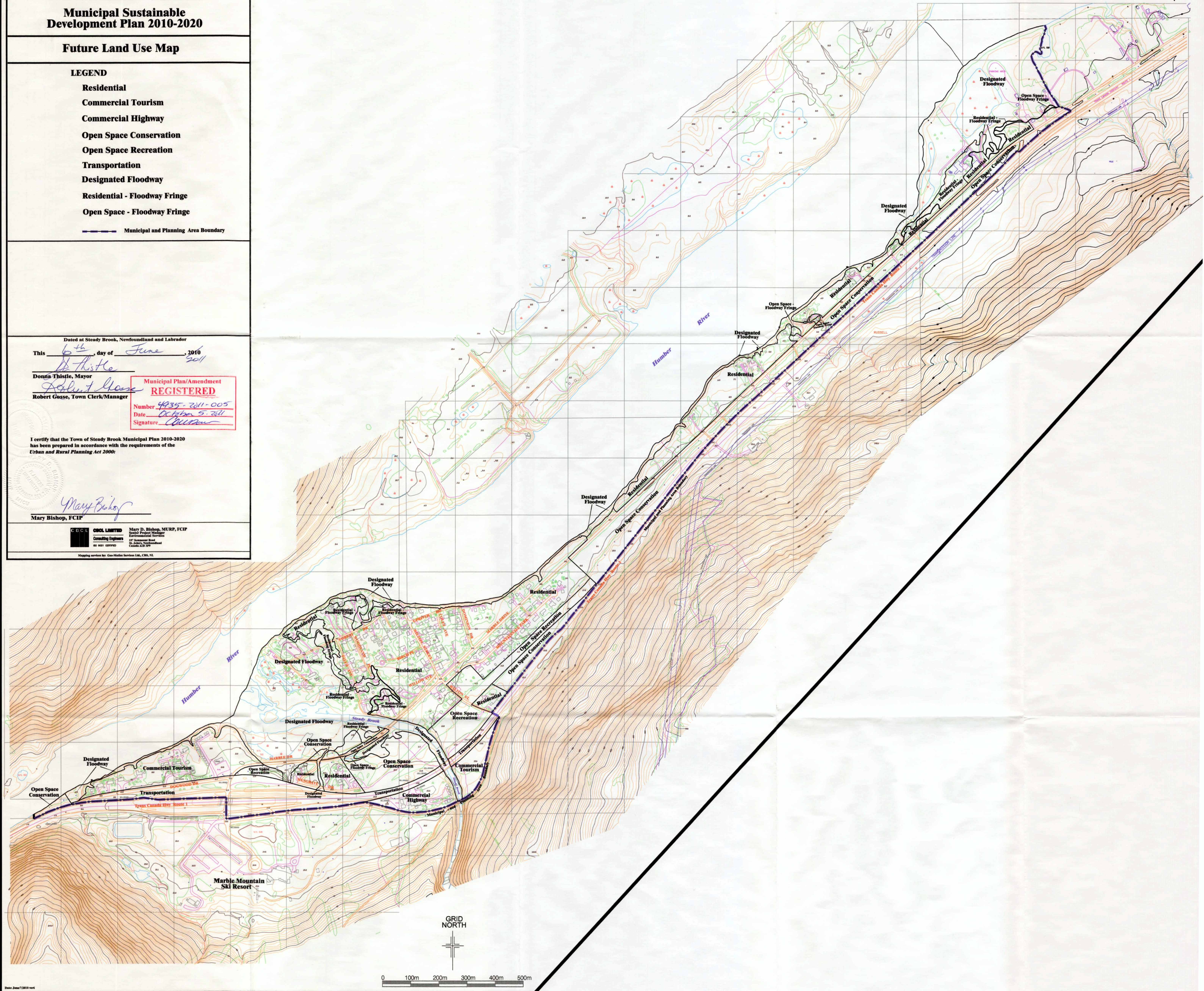
I certify that the Town of Steady Brook Municipal Plan 2010-2020
has been prepared in accordance with the requirements of the
Urban and Rural Planning Act 2000:

Mary Bishop
Mary Bishop, FCIP

COCL LIMITED
Consulting Engineers
10100 101ST STREET
SHEPPARD AVENUE EAST
SCARBOROUGH, ONTARIO M1V 4Y7
Tel: (416) 291-1111
Fax: (416) 291-1112
www.cocl.ca

Mary D. Bishop, MURP, FCIP
Senior Project Manager
Environmental Services
10100 101ST STREET
SHEPPARD AVENUE EAST
SCARBOROUGH, ONTARIO M1V 4Y7
Tel: (416) 291-1111
Fax: (416) 291-1112
www.cocl.ca

Mapping services by: Geo-Matrix Solutions Ltd., C.M.S. Inc.



GRID
NORTH

0 100m 200m 300m 400m 500m